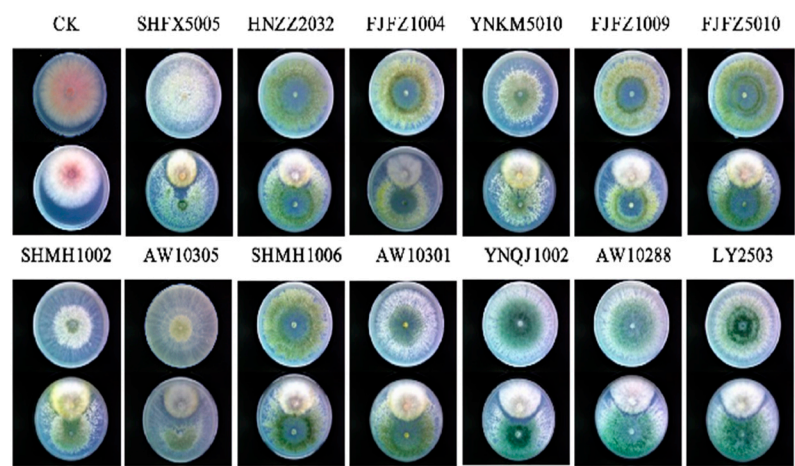
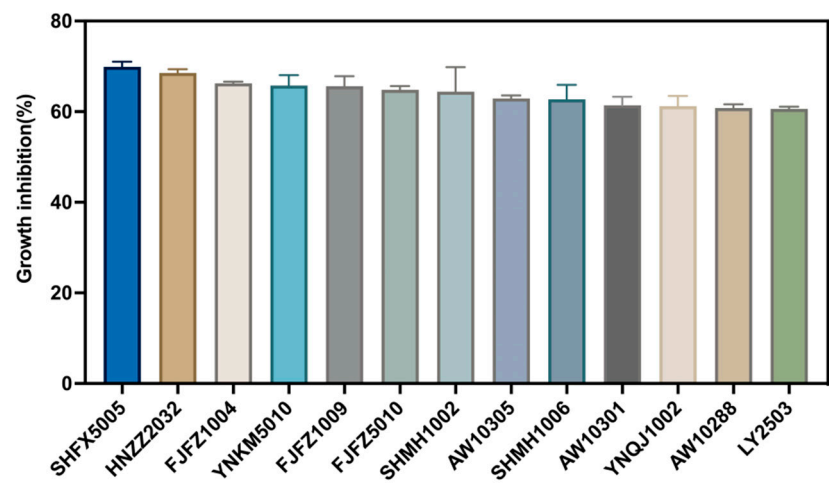


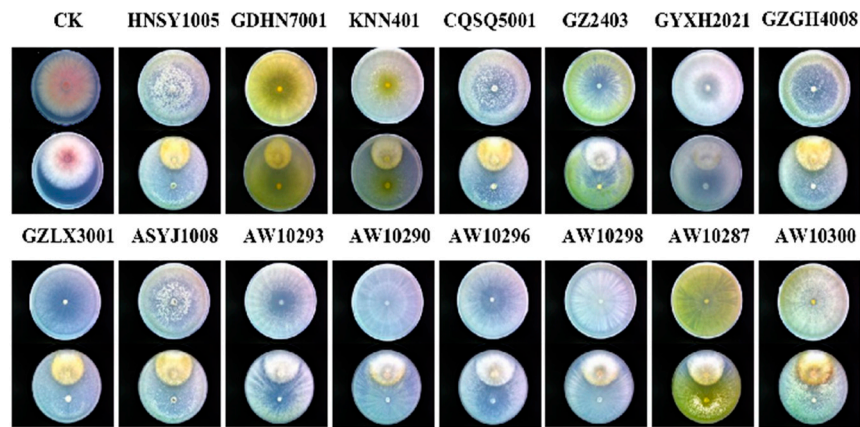
Figure S1: The phenotype of *Trichoderma* strains inhibiting the growth of *F. graminearum*. (a) The phenotype of 13 sporogenous *Trichoderma* strains with inhibition effect on *F. graminearum*; (b) Inhibition rates of 13 sporogenesis *Trichoderma* strains on the growth of *F. graminearum*; (c) The phenotype of 15 filamentous *Trichoderma* strains inhibiting the growth of *F. graminearum*; (d) Inhibition rate of 15 filamentous *Trichoderma* strains



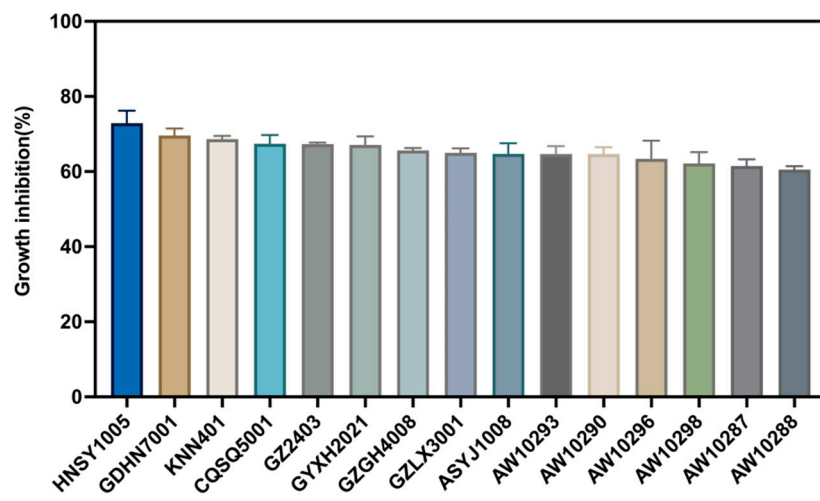
(a)



(b)



(c)



(d)