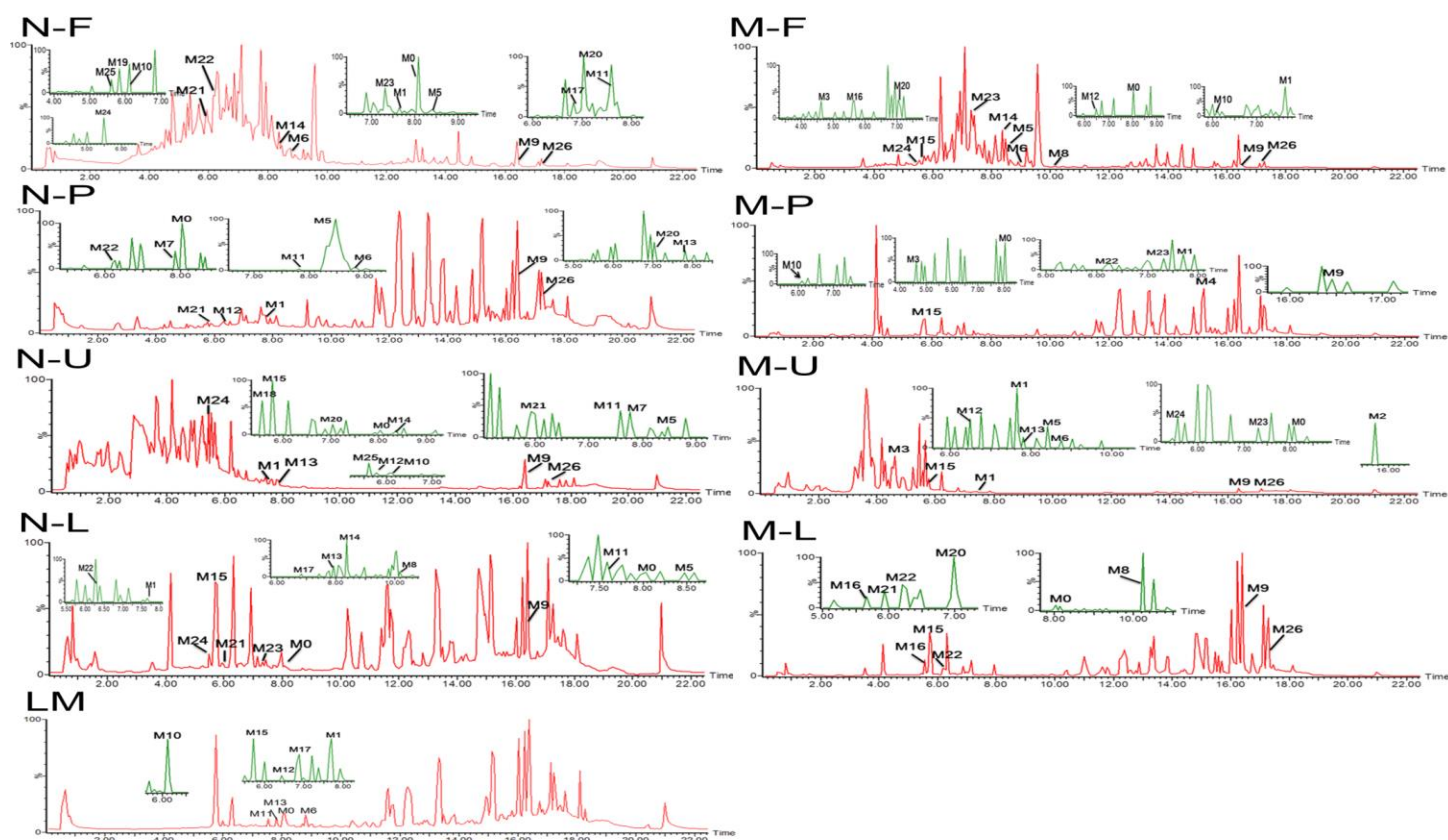
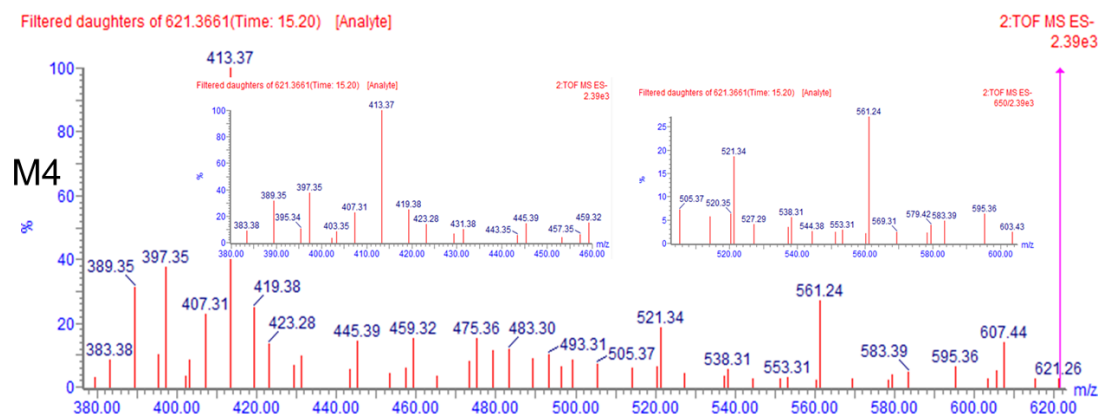
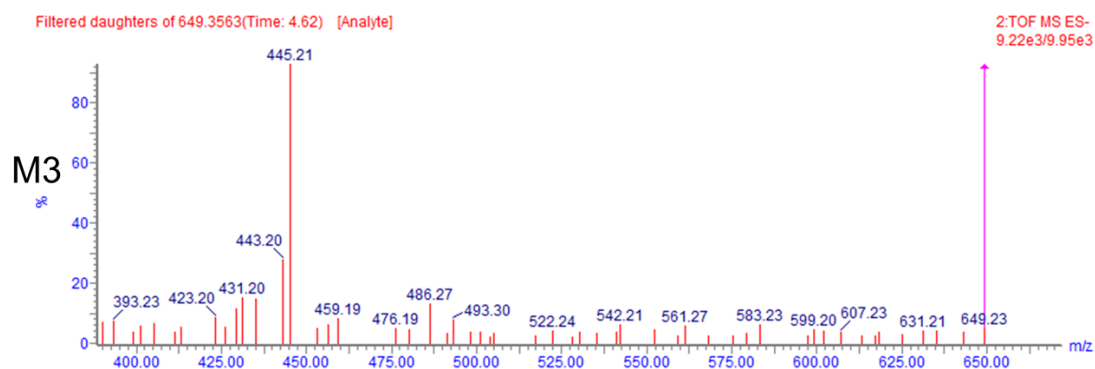
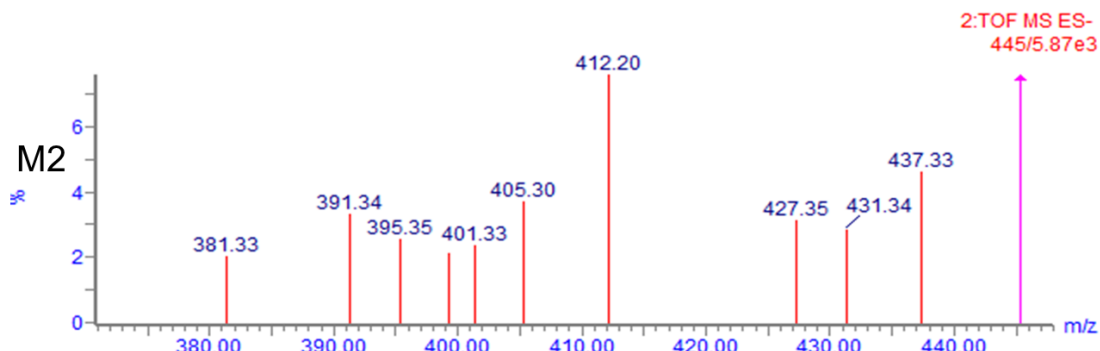
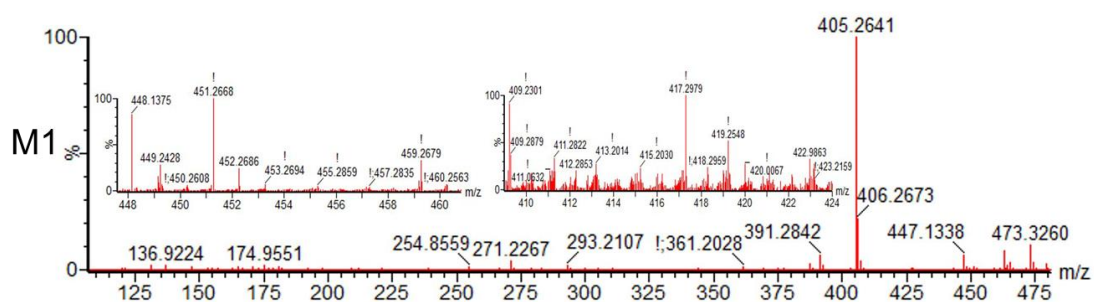


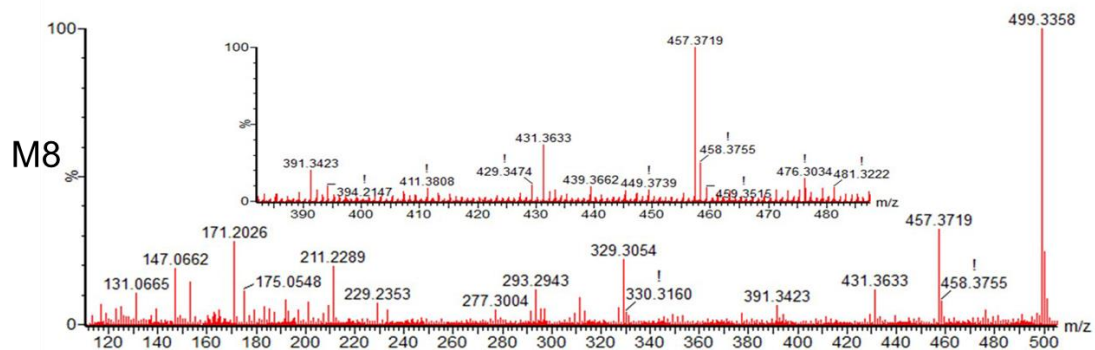
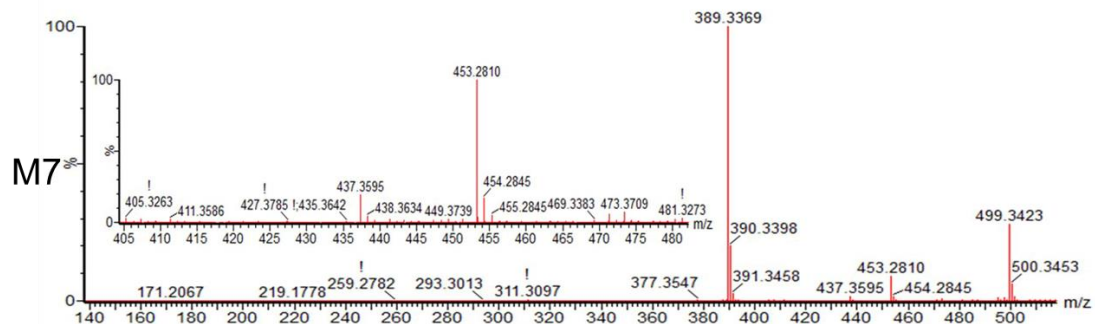
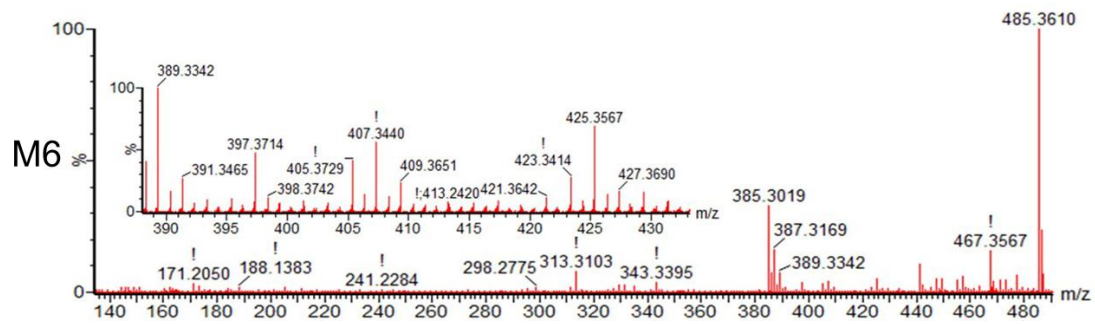
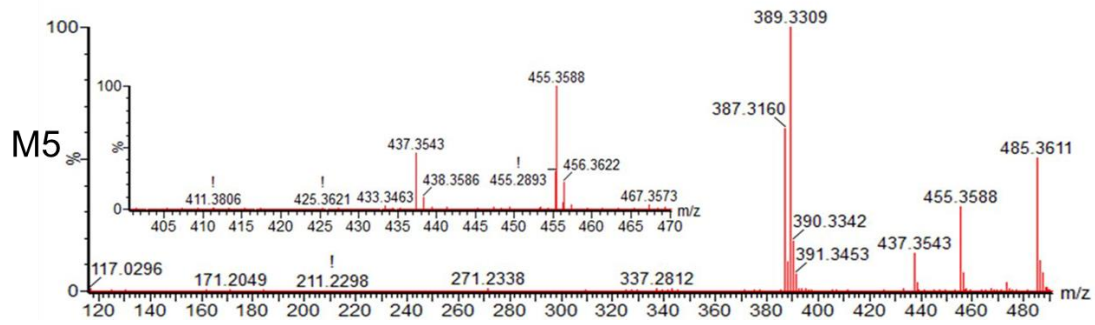
## Supplementary materials

# UPLC-QTOF-MS based comparison of Rotundic acid metabolic profiles in normal and NAFLD rats



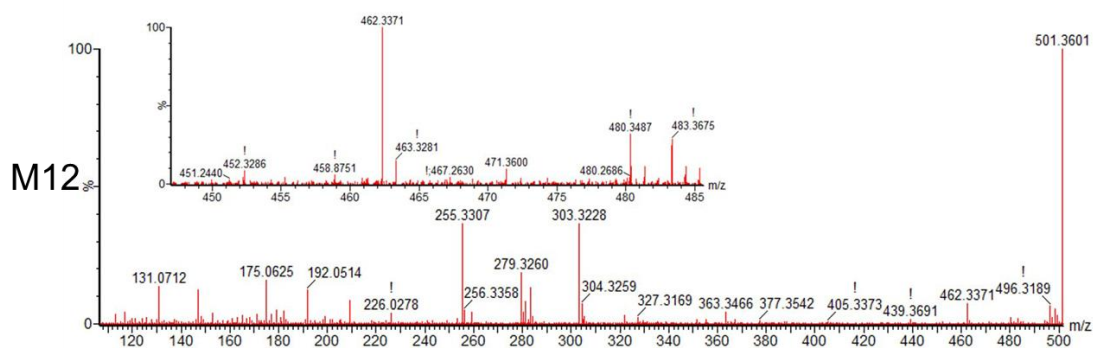
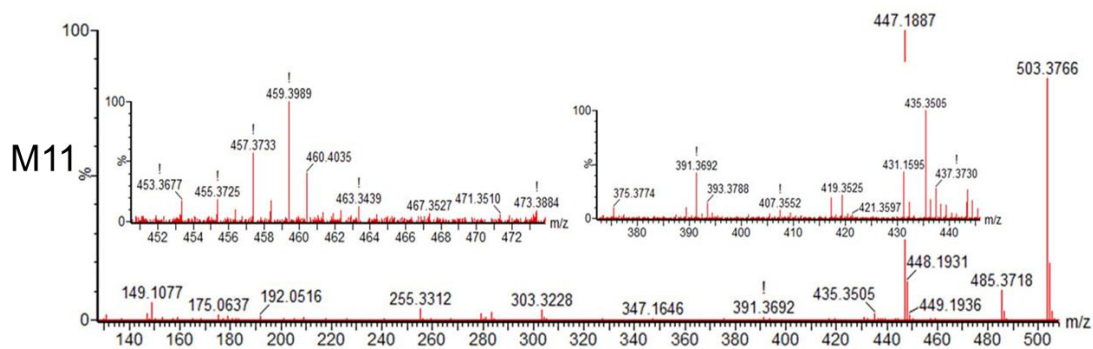
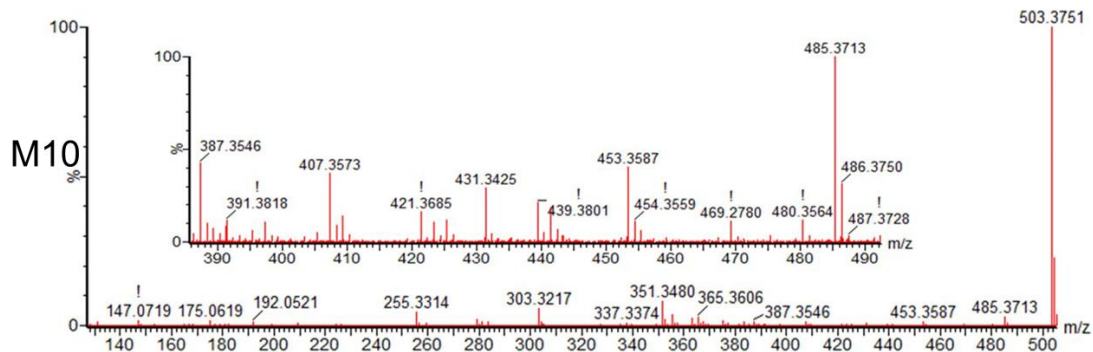
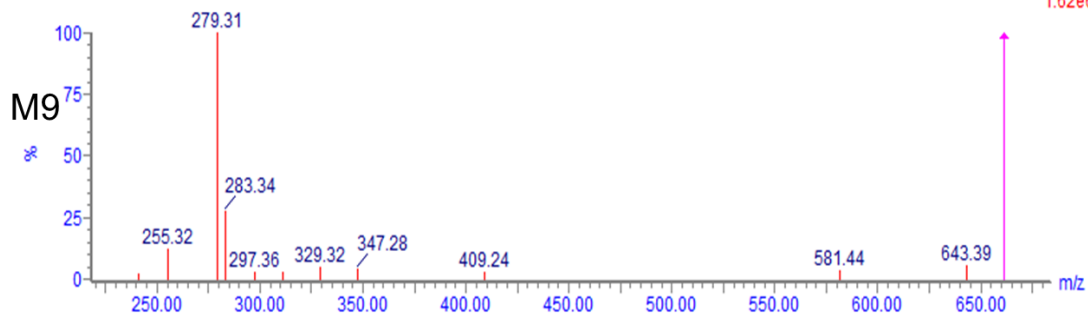
**Figure S1.** Typical Chromatograms of rat plasma, urine, fecal and liver, as well as liver microsomal samples. N-F: Fecal sample of normal rats; M-F: Fecal sample of model rats; N-P: Plasma sample of normal rats; M-P: Plasma sample of model rats; N-U: Urine sample of normal rats; M-U: Urine sample of model rats; N-L: Liver sample of normal rats; M-L: Liver sample of model rats; LM: Liver microsomal samples.

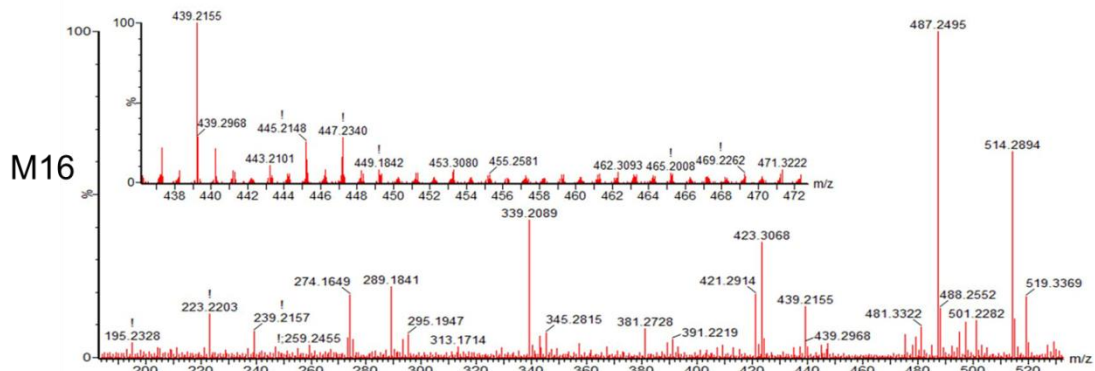
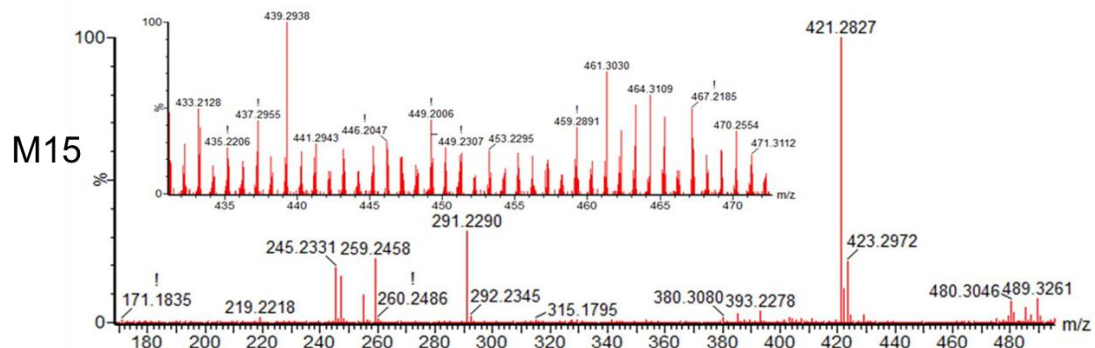
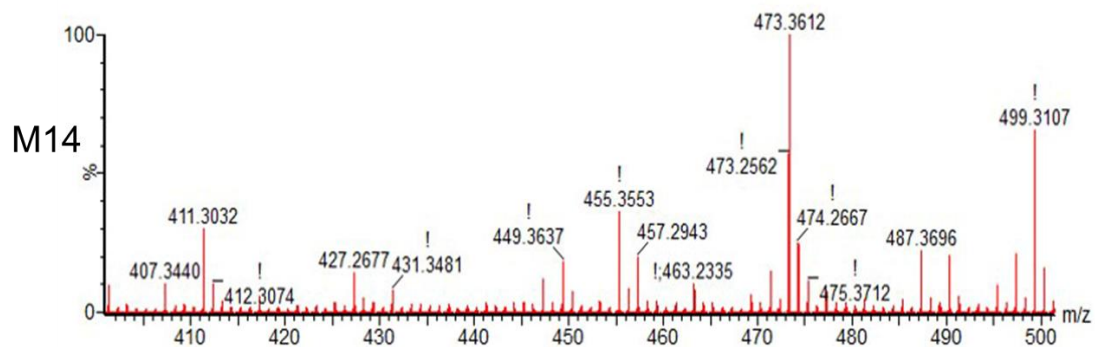
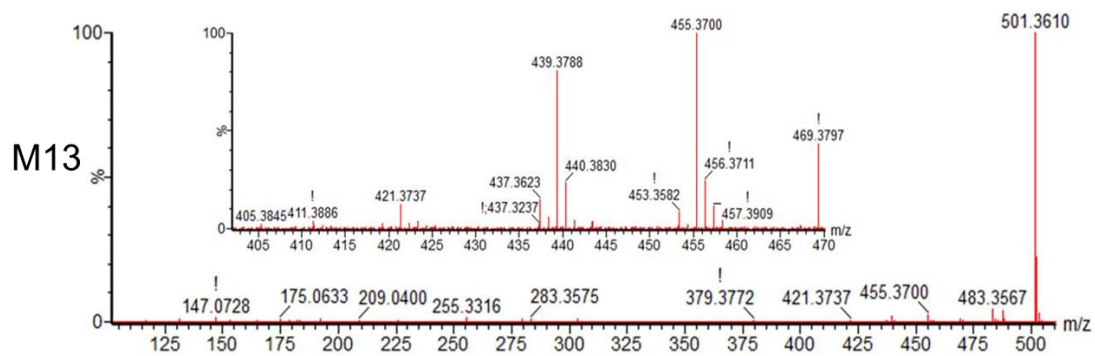




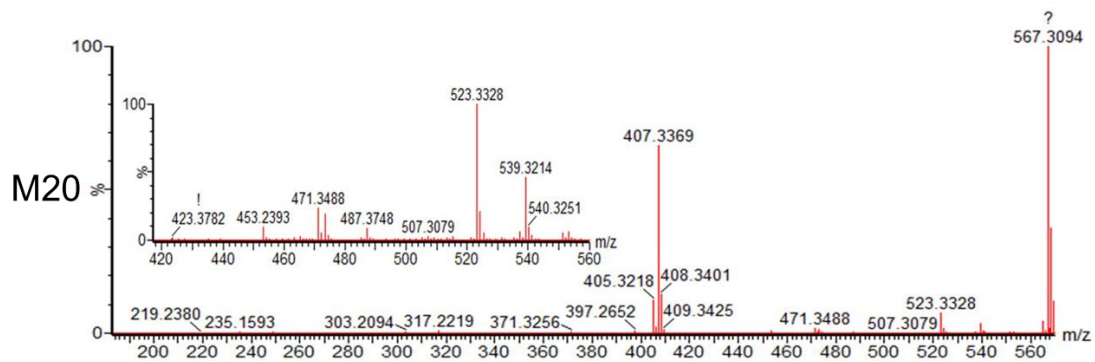
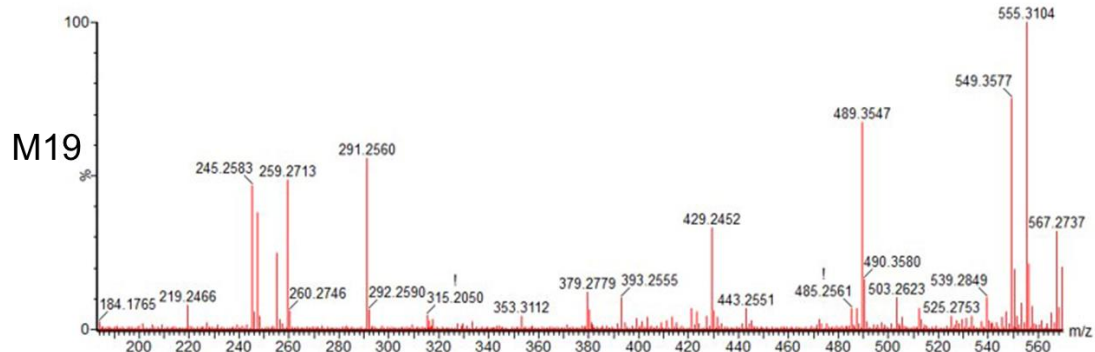
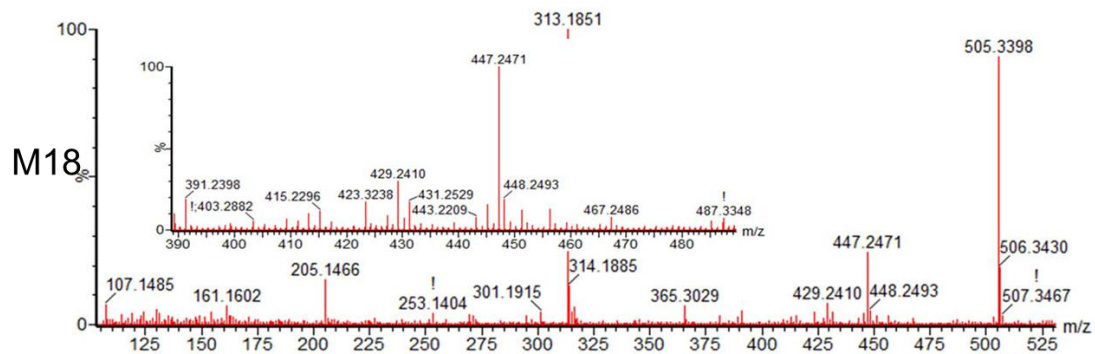
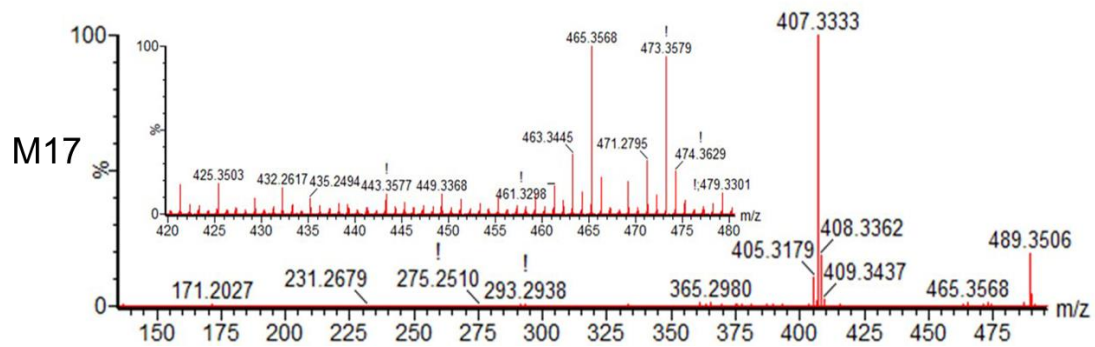
Filtered daughters of 661.3618(Time: 16.46) [Analyte]

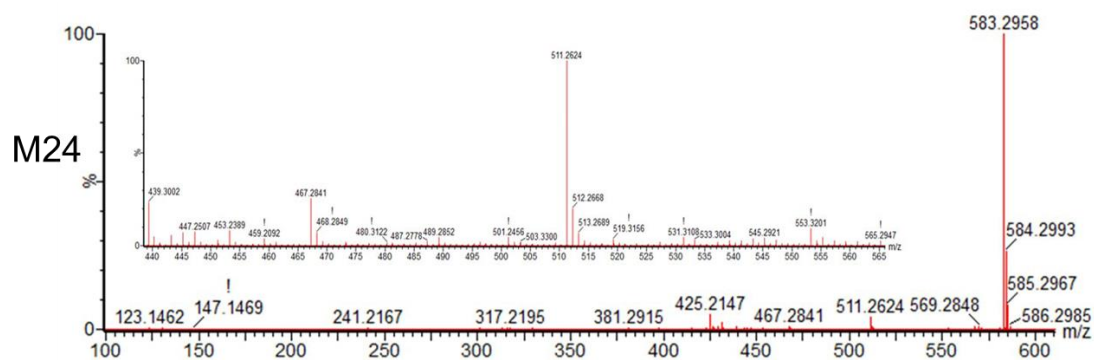
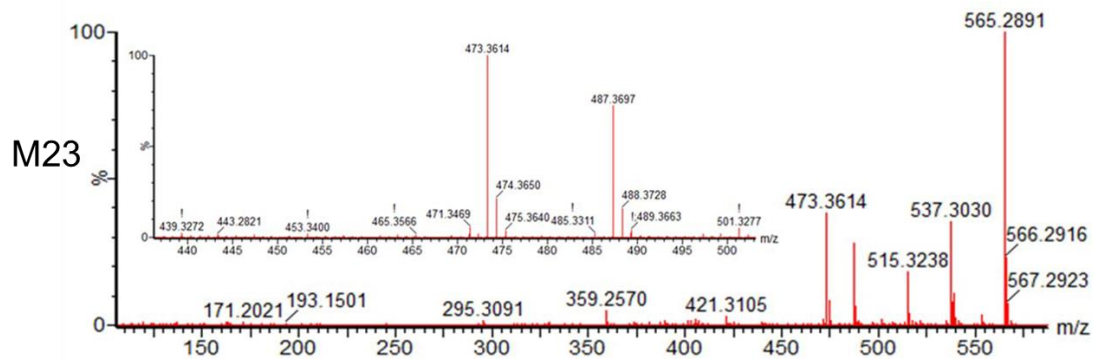
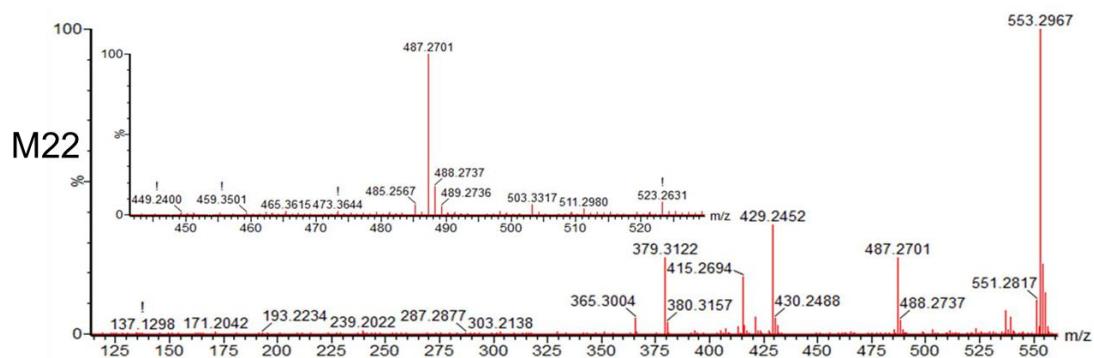
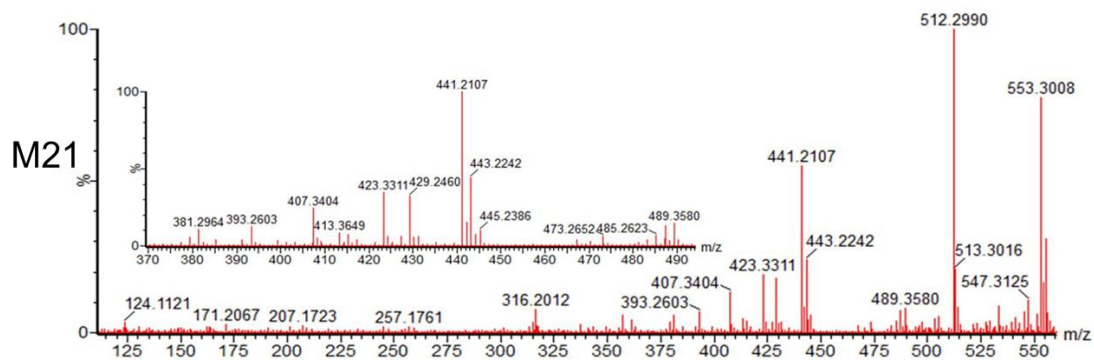
2:TOF MS ES-  
1.62e6

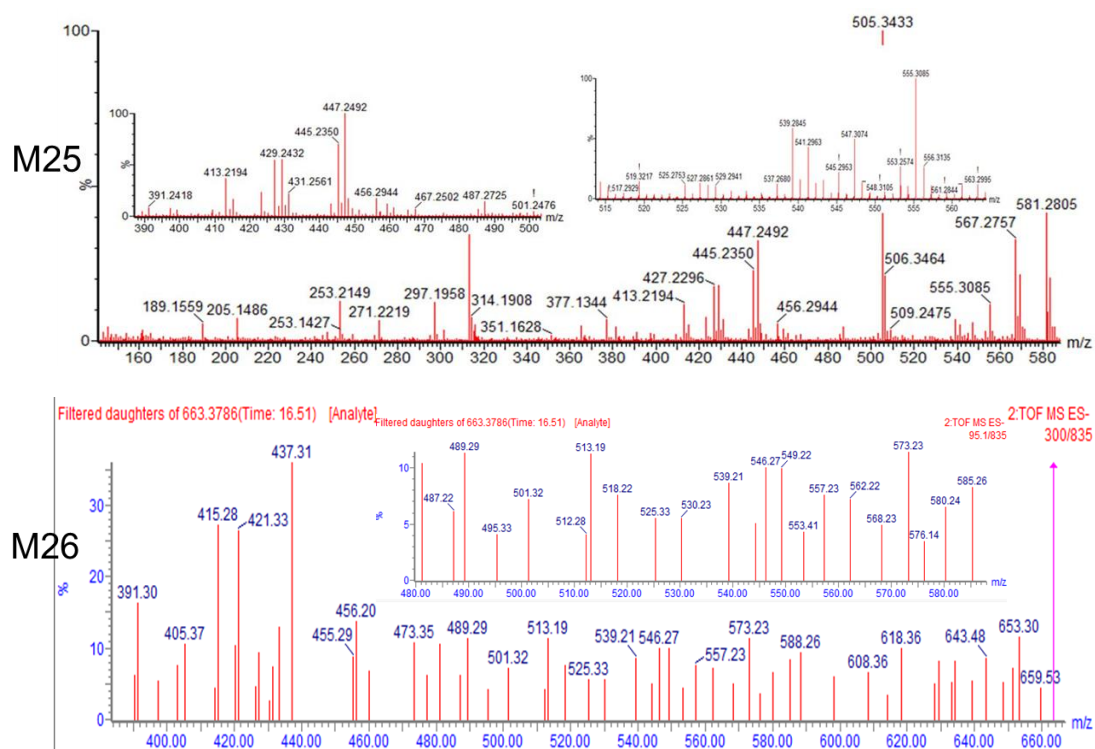












**Figure S2.** The MS/MS spectra of metabolites M1-M26.