

Supplementary data

Table S1. Relative level of ceramide (CER) in plasma samples. Data were analyzed by repeated measures using linear mixed model. Overall participant and within-visit participant differences were included as random factors and the analyses were adjusted for BMI, age and visit. q -values indicate FDR-adjusted p -values for meal-time interactions ($q_{meal*time}$), the effect of meal (q_{meal}) and the effect of time (q_{time}).

| | 0 | 30 | 60 | 90 | 120 | 180 | 240 | 300 | 360 | 420 | 480 | q _{meal} *time | q _{meal} | q _{time} |
|---------------|-------|-------|-------|-------|-------|-------|-------|-------|-------|-------|-------|-------------------------|-------------------|-------------------|
| CER 18:0_18:2 | | | | | | | | | | | | | | |
| Cheese | 0.003 | 0.003 | 0.001 | 0.001 | 0.001 | 0.001 | 0.001 | 0.002 | 0.001 | 0.001 | 0.001 | 0.833 | 0.562 | 0.392 |
| Hom. Cheese | 0.001 | 0.002 | 0.002 | 0.001 | 0.001 | 0.001 | 0.001 | 0.001 | 0.013 | 0.001 | 0.001 | | | |
| MCI Drink | 0.014 | 0.009 | 0.001 | 0.001 | 0.001 | 0.004 | 0.001 | 0.002 | 0.013 | 0.009 | 0.004 | | | |
| MCI Gel | 0.001 | 0.001 | 0.001 | 0.001 | 0.001 | 0.001 | 0.001 | 0.001 | 0.001 | 0.001 | 0.001 | | | |
| CER 18:0_18:1 | | | | | | | | | | | | | | |
| Cheese | 0.007 | 0.009 | 0.007 | 0.006 | 0.012 | 0.005 | 0.006 | 0.010 | 0.009 | 0.007 | 0.014 | 0.687 | 0.562 | 0.235 |
| Hom. Cheese | 0.008 | 0.007 | 0.005 | 0.006 | 0.008 | 0.006 | 0.008 | 0.006 | 0.014 | 0.008 | 0.009 | | | |
| MCI Drink | 0.018 | 0.011 | 0.008 | 0.005 | 0.005 | 0.008 | 0.007 | 0.007 | 0.010 | 0.009 | 0.010 | | | |
| MCI Gel | 0.006 | 0.008 | 0.009 | 0.008 | 0.008 | 0.007 | 0.009 | 0.009 | 0.009 | 0.007 | 0.008 | | | |
| CER 18:0_20:2 | | | | | | | | | | | | | | |
| Cheese | 0.001 | 0.001 | 0.001 | 0.001 | 0.002 | 0.001 | 0.001 | 0.001 | 0.001 | 0.001 | 0.001 | 0.794 | 0.791 | 0.713 |
| Hom. Cheese | 0.001 | 0.001 | 0.001 | 0.001 | 0.001 | 0.001 | 0.001 | 0.001 | 0.002 | 0.001 | 0.002 | | | |
| MCI Drink | 0.002 | 0.002 | 0.001 | 0.001 | 0.001 | 0.001 | 0.001 | 0.001 | 0.002 | 0.001 | 0.001 | | | |
| MCI Gel | 0.001 | 0.001 | 0.001 | 0.001 | 0.001 | 0.001 | 0.001 | 0.001 | 0.001 | 0.001 | 0.001 | | | |
| CER 18:0_22:1 | | | | | | | | | | | | | | |
| Cheese | 0.116 | 0.151 | 0.125 | 0.126 | 0.236 | 0.098 | 0.121 | 0.159 | 0.173 | 0.112 | 0.195 | 0.794 | 0.695 | 0.479 |
| Hom. Cheese | 0.152 | 0.123 | 0.104 | 0.128 | 0.146 | 0.132 | 0.162 | 0.125 | 0.172 | 0.165 | 0.156 | | | |
| MCI Drink | 0.285 | 0.217 | 0.147 | 0.109 | 0.108 | 0.150 | 0.129 | 0.160 | 0.134 | 0.153 | 0.214 | | | |
| MCI Gel | 0.124 | 0.151 | 0.142 | 0.146 | 0.157 | 0.138 | 0.148 | 0.159 | 0.161 | 0.127 | 0.114 | | | |
| CER 18:0_24:0 | | | | | | | | | | | | | | |
| Cheese | 0.095 | 0.134 | 0.096 | 0.101 | 0.183 | 0.081 | 0.097 | 0.129 | 0.141 | 0.099 | 0.156 | 0.794 | 0.564 | 0.170 |
| Hom. Cheese | 0.132 | 0.107 | 0.092 | 0.101 | 0.121 | 0.108 | 0.127 | 0.101 | 0.146 | 0.137 | 0.131 | | | |
| MCI Drink | 0.307 | 0.189 | 0.121 | 0.099 | 0.087 | 0.119 | 0.102 | 0.133 | 0.118 | 0.134 | 0.205 | | | |
| MCI Gel | 0.095 | 0.113 | 0.110 | 0.116 | 0.119 | 0.106 | 0.116 | 0.138 | 0.128 | 0.101 | 0.097 | | | |
| CER 18:0_26:3 | | | | | | | | | | | | | | |
| Cheese | 0.003 | 0.003 | 0.002 | 0.002 | 0.004 | 0.001 | 0.002 | 0.002 | 0.003 | 0.002 | 0.003 | 0.794 | 0.564 | 0.764 |
| Hom. Cheese | 0.003 | 0.002 | 0.002 | 0.002 | 0.003 | 0.002 | 0.003 | 0.002 | 0.005 | 0.004 | 0.002 | | | |
| MCI Drink | 0.009 | 0.005 | 0.003 | 0.002 | 0.002 | 0.004 | 0.002 | 0.003 | 0.006 | 0.004 | 0.003 | | | |

| | | | | | | | | | | | | | | |
|---------------|-------|-------|-------|-------|-------|-------|-------|-------|-------|-------|-------|-------|-------|-------|
| MCI Gel | 0.002 | 0.002 | 0.002 | 0.003 | 0.003 | 0.003 | 0.003 | 0.002 | 0.003 | 0.002 | 0.002 | 0.794 | 0.149 | 0.630 |
| CER 18:0_26:2 | | | | | | | | | | | | | | |
| Cheese | 0.005 | 0.005 | 0.004 | 0.004 | 0.006 | 0.004 | 0.005 | 0.005 | 0.005 | 0.005 | 0.007 | | | |
| Hom. Cheese | 0.005 | 0.005 | 0.004 | 0.004 | 0.005 | 0.004 | 0.005 | 0.003 | 0.007 | 0.006 | 0.005 | | | |
| MCI Drink | 0.010 | 0.009 | 0.005 | 0.004 | 0.003 | 0.006 | 0.004 | 0.005 | 0.005 | 0.007 | 0.006 | | | |
| MCI Gel | 0.004 | 0.004 | 0.004 | 0.005 | 0.005 | 0.004 | 0.005 | 0.004 | 0.004 | 0.004 | 0.004 | | | |

Table S2. Relative level of sphingomyelin (SM) in plasma samples. Data were analyzed by repeated measures using linear mixed model. Overall participant and within-visit participant differences were included as random factors and the analyses were adjusted for BMI, age and visit. q -values indicate FDR-adjusted p -values for meal-time interactions ($q_{meal*time}$), the effect of meal (q_{meal}) and the effect of time (q_{time}). * indicate significant differences ($q < 0.05$).

| | 0 | 30 | 60 | 90 | 120 | 180 | 240 | 300 | 360 | 420 | 480 | q _{meal*time} | q _{meal} | q _{time} |
|--------------|--------|--------|--------|--------|--------|--------|--------|--------|--------|--------|--------|------------------------|-------------------|-------------------|
| SM 18:0_14:0 | | | | | | | | | | | | | | |
| Cheese | 1.126 | 1.541 | 1.095 | 0.995 | 1.470 | 1.137 | 1.440 | 1.261 | 1.358 | 1.502 | 1.442 | 0.902 | 0.823 | 0.001* |
| Hom. Cheese | 1.403 | 1.253 | 1.252 | 1.146 | 1.093 | 1.203 | 1.310 | 1.544 | 1.621 | 1.559 | 1.512 | | | |
| MCI Drink | 1.212 | 1.687 | 1.275 | 1.250 | 1.397 | 1.326 | 1.704 | 1.380 | 1.237 | 1.260 | 1.493 | | | |
| MCI Gel | 1.099 | 1.251 | 1.120 | 1.141 | 1.158 | 1.075 | 1.286 | 2.004 | 1.538 | 1.389 | 1.590 | | | |
| SM 18:0_20:0 | | | | | | | | | | | | | | |
| Cheese | 5.226 | 6.038 | 5.214 | 4.552 | 5.543 | 5.038 | 5.473 | 5.676 | 6.041 | 5.707 | 6.141 | 0.833 | 0.564 | 0.143 |
| Hom. Cheese | 5.827 | 4.734 | 5.654 | 4.927 | 4.959 | 5.054 | 4.946 | 6.209 | 5.494 | 5.713 | 6.030 | | | |
| MCI Drink | 4.875 | 5.529 | 5.654 | 5.209 | 5.213 | 6.107 | 5.187 | 5.977 | 4.980 | 5.480 | 5.379 | | | |
| MCI Gel | 5.049 | 5.418 | 4.934 | 5.001 | 5.465 | 4.794 | 4.936 | 5.370 | 5.016 | 5.477 | 5.754 | | | |
| SM 18:0_22:1 | | | | | | | | | | | | | | |
| Cheese | 15.521 | 17.013 | 15.465 | 14.489 | 17.481 | 14.973 | 15.927 | 17.488 | 19.044 | 16.724 | 18.949 | 0.833 | 0.564 | 0.235 |
| Hom. Cheese | 17.638 | 14.876 | 17.551 | 15.818 | 14.388 | 15.108 | 15.513 | 18.510 | 17.211 | 18.322 | 18.512 | | | |
| MCI Drink | 15.615 | 16.086 | 18.206 | 16.681 | 16.690 | 19.253 | 16.708 | 19.475 | 15.764 | 17.480 | 17.154 | | | |
| MCI Gel | 15.438 | 15.567 | 14.952 | 15.922 | 17.381 | 14.654 | 15.799 | 15.742 | 15.447 | 17.386 | 17.613 | | | |
| SM 18:1_22:0 | | | | | | | | | | | | | | |
| Cheese | 15.537 | 17.016 | 15.574 | 14.282 | 17.430 | 15.141 | 15.952 | 17.474 | 19.030 | 16.749 | 19.134 | 0.833 | 0.564 | 0.175 |
| Hom. Cheese | 17.614 | 14.919 | 17.475 | 15.587 | 14.440 | 15.058 | 15.552 | 18.503 | 17.091 | 18.264 | 18.537 | | | |
| MCI Drink | 15.504 | 16.041 | 18.218 | 16.603 | 16.746 | 19.468 | 16.604 | 19.496 | 15.732 | 17.525 | 17.148 | | | |
| MCI Gel | 15.433 | 15.538 | 14.864 | 15.779 | 17.443 | 14.534 | 16.023 | 15.736 | 15.589 | 17.456 | 17.685 | | | |
| SM 18:0_22:0 | | | | | | | | | | | | | | |
| Cheese | 0.891 | 0.978 | 0.835 | 0.833 | 0.970 | 0.820 | 0.876 | 0.966 | 1.037 | 0.944 | 1.064 | 0.833 | 0.564 | 0.143 |
| Hom. Cheese | 0.910 | 0.787 | 0.975 | 0.906 | 0.764 | 0.866 | 0.771 | 1.047 | 0.877 | 0.984 | 1.027 | | | |
| MCI Drink | 0.836 | 0.925 | 0.918 | 0.842 | 0.883 | 1.108 | 0.936 | 1.167 | 0.911 | 0.985 | 0.971 | | | |
| MCI Gel | 0.862 | 0.900 | 0.813 | 0.886 | 0.997 | 0.793 | 0.866 | 0.914 | 0.795 | 0.946 | 0.972 | | | |
| SM 18:1_23:0 | | | | | | | | | | | | | | |
| Cheese | 3.288 | 3.615 | 2.913 | 2.845 | 3.346 | 3.012 | 3.353 | 3.176 | 3.575 | 3.213 | 3.478 | 0.794 | 0.564 | 0.677 |
| Hom. Cheese | 3.836 | 2.844 | 3.453 | 3.192 | 3.065 | 3.384 | 3.210 | 3.910 | 3.599 | 3.571 | 3.768 | | | |
| MCI Drink | 3.806 | 3.575 | 3.645 | 3.649 | 3.458 | 3.935 | 3.218 | 3.517 | 3.361 | 3.477 | 3.656 | | | |
| MCI Gel | 3.046 | 3.416 | 3.191 | 3.325 | 3.461 | 3.258 | 3.019 | 3.446 | 3.256 | 3.294 | 3.400 | | | |
| SM 18:0_23:0 | | | | | | | | | | | | | | |
| Cheese | 0.130 | 0.139 | 0.122 | 0.106 | 0.119 | 0.116 | 0.129 | 0.115 | 0.123 | 0.119 | 0.132 | 0.794 | 0.451 | 0.689 |

| | | | | | | | | | | | | | | |
|---------------------|-------|-------|-------|-------|-------|-------|-------|-------|-------|-------|-------|-------|-------|-------|
| Hom. Cheese | 0.160 | 0.111 | 0.149 | 0.137 | 0.127 | 0.129 | 0.110 | 0.145 | 0.135 | 0.149 | 0.151 | 0.794 | 0.649 | 0.689 |
| MCI Drink | 0.136 | 0.149 | 0.150 | 0.141 | 0.123 | 0.136 | 0.124 | 0.127 | 0.120 | 0.129 | 0.138 | | | |
| MCI Gel | 0.107 | 0.140 | 0.119 | 0.136 | 0.133 | 0.103 | 0.109 | 0.129 | 0.113 | 0.125 | 0.132 | | | |
| SM 18:0 24:0 | | | | | | | | | | | | | | |
| Cheese | 1.222 | 1.164 | 1.191 | 1.035 | 1.247 | 1.116 | 1.064 | 1.141 | 1.269 | 1.062 | 1.157 | 0.794 | 0.649 | 0.689 |
| Hom. Cheese | 1.351 | 1.228 | 1.239 | 1.134 | 0.978 | 1.096 | 1.060 | 1.299 | 1.185 | 1.217 | 1.252 | | | |
| MCI Drink | 1.048 | 1.285 | 1.339 | 1.241 | 1.143 | 1.378 | 1.095 | 1.272 | 1.033 | 1.262 | 1.026 | | | |
| MCI Gel | 1.130 | 1.349 | 1.095 | 1.131 | 1.254 | 0.978 | 1.003 | 1.030 | 1.052 | 1.191 | 1.148 | | | |

Table S3. Relative level of phosphatidylethanolamine (PE) in plasma samples. Data were analyzed by repeated measures using linear mixed model. Overall participant and within-visit participant differences were included as random factors and the analyses were adjusted for BMI, age and visit. q-values indicate FDR-adjusted p-values for meal-time interactions ($q_{meal*time}$), the effect of meal (q_{meal}) and the effect of time (q_{time}). * indicate significant differences ($q < 0.05$).

| | 0 | 30 | 60 | 90 | 120 | 180 | 240 | 300 | 360 | 420 | 480 | q _{meal*time} | q _{meal} | q _{time} |
|--------------|--------|--------|--------|--------|--------|--------|--------|--------|--------|--------|--------|------------------------|-------------------|-------------------|
| PE 18:1_16:0 | | | | | | | | | | | | | | |
| Cheese | 2.740 | 2.834 | 2.435 | 2.486 | 2.739 | 2.769 | 3.004 | 2.593 | 3.293 | 2.970 | 3.130 | 0.794 | 0.562 | 0.010* |
| Hom. Cheese | 3.198 | 2.372 | 3.117 | 2.660 | 2.613 | 3.003 | 2.957 | 3.360 | 3.051 | 3.153 | 3.360 | | | |
| MCI Drink | 2.602 | 2.658 | 2.965 | 2.922 | 2.872 | 2.983 | 2.778 | 2.868 | 2.768 | 2.956 | 3.425 | | | |
| MCI Gel | 2.414 | 2.920 | 2.614 | 2.654 | 2.646 | 2.719 | 2.638 | 3.072 | 2.992 | 3.145 | 2.901 | | | |
| PE 18:0_16:0 | | | | | | | | | | | | | | |
| Cheese | 0.958 | 1.017 | 0.861 | 0.827 | 1.035 | 1.063 | 1.128 | 0.925 | 1.245 | 1.096 | 1.135 | 0.690 | 0.451 | 0.001* |
| Hom. Cheese | 1.275 | 0.830 | 1.010 | 0.909 | 0.969 | 1.093 | 1.074 | 1.282 | 1.174 | 1.337 | 1.237 | | | |
| MCI Drink | 0.939 | 0.948 | 1.140 | 1.031 | 1.011 | 1.128 | 0.999 | 1.075 | 1.013 | 1.141 | 1.219 | | | |
| MCI Gel | 0.883 | 0.983 | 0.948 | 0.910 | 1.040 | 0.952 | 0.942 | 1.334 | 1.071 | 1.112 | 1.037 | | | |
| PE 16:0_18:2 | | | | | | | | | | | | | | |
| Cheese | 0.003 | 0.003 | 0.003 | 0.002 | 0.003 | 0.003 | 0.003 | 0.003 | 0.003 | 0.003 | 0.003 | 0.281 | 0.649 | 0.115 |
| Hom. Cheese | 0.003 | 0.002 | 0.003 | 0.002 | 0.003 | 0.003 | 0.003 | 0.003 | 0.003 | 0.004 | 0.003 | | | |
| MCI Drink | 0.003 | 0.002 | 0.003 | 0.003 | 0.003 | 0.004 | 0.003 | 0.003 | 0.003 | 0.002 | 0.003 | | | |
| MCI Gel | 0.002 | 0.003 | 0.002 | 0.003 | 0.003 | 0.003 | 0.003 | 0.003 | 0.003 | 0.003 | 0.002 | | | |
| PE 16:0_18:1 | | | | | | | | | | | | | | |
| Cheese | 0.080 | 0.119 | 0.110 | 0.119 | 0.161 | 0.168 | 0.179 | 0.163 | 0.205 | 0.141 | 0.147 | 0.794 | 0.564 | <0.001* |
| Hom. Cheese | 0.087 | 0.069 | 0.112 | 0.109 | 0.137 | 0.162 | 0.170 | 0.198 | 0.144 | 0.174 | 0.130 | | | |
| MCI Drink | 0.070 | 0.075 | 0.106 | 0.108 | 0.135 | 0.186 | 0.151 | 0.173 | 0.148 | 0.139 | 0.149 | | | |
| MCI Gel | 0.082 | 0.078 | 0.109 | 0.125 | 0.150 | 0.156 | 0.173 | 0.198 | 0.160 | 0.152 | 0.118 | | | |
| PE 18:1_18:0 | | | | | | | | | | | | | | |
| Cheese | 0.957 | 1.227 | 0.991 | 0.959 | 1.106 | 1.124 | 1.369 | 1.227 | 1.581 | 1.579 | 1.606 | 0.826 | 0.636 | <0.001* |
| Hom. Cheese | 1.098 | 0.874 | 1.143 | 1.013 | 1.057 | 1.151 | 1.193 | 1.574 | 1.423 | 1.500 | 1.587 | | | |
| MCI Drink | 1.007 | 1.030 | 1.091 | 1.094 | 1.163 | 1.270 | 1.255 | 1.408 | 1.317 | 1.577 | 1.535 | | | |
| MCI Gel | 0.900 | 1.075 | 0.943 | 1.002 | 1.095 | 1.141 | 1.152 | 1.427 | 1.367 | 1.470 | 1.432 | | | |
| PE 16:0_20:4 | | | | | | | | | | | | | | |
| Cheese | 53.017 | 57.307 | 51.906 | 48.563 | 59.892 | 56.121 | 58.931 | 59.369 | 69.447 | 60.739 | 68.412 | 0.794 | 0.451 | <0.001* |
| Hom. Cheese | 61.113 | 50.573 | 63.995 | 50.759 | 50.825 | 57.478 | 56.898 | 65.733 | 64.281 | 64.382 | 66.614 | | | |
| MCI Drink | 52.989 | 50.125 | 59.369 | 56.005 | 57.183 | 65.967 | 55.036 | 64.754 | 57.382 | 60.446 | 64.003 | | | |
| MCI Gel | 48.995 | 50.552 | 49.740 | 52.496 | 55.114 | 52.344 | 52.093 | 58.255 | 54.810 | 62.010 | 57.733 | | | |
| PE 18:1_18:1 | | | | | | | | | | | | | | |
| Cheese | 0.004 | 0.007 | 0.007 | 0.007 | 0.010 | 0.011 | 0.010 | 0.011 | 0.013 | 0.010 | 0.008 | 0.833 | 0.644 | <0.001* |

| | | | | | | | | | | | | | | |
|---------------------|--------|--------|--------|--------|--------|--------|--------|--------|--------|--------|--------|-------|-------|---------|
| Hom. Cheese | 0.006 | 0.004 | 0.008 | 0.007 | 0.009 | 0.010 | 0.011 | 0.011 | 0.010 | 0.009 | 0.007 | | | |
| MCI Drink | 0.004 | 0.005 | 0.007 | 0.009 | 0.010 | 0.014 | 0.010 | 0.010 | 0.009 | 0.008 | 0.009 | | | |
| MCI Gel | 0.006 | 0.005 | 0.007 | 0.008 | 0.010 | 0.012 | 0.012 | 0.014 | 0.011 | 0.011 | 0.006 | | | |
| PE 18:0_18:2 | | | | | | | | | | | | | | |
| Cheese | 0.425 | 0.602 | 0.619 | 0.671 | 0.911 | 0.936 | 0.953 | 0.817 | 0.992 | 0.742 | 0.644 | | | |
| Hom. Cheese | 0.478 | 0.398 | 0.775 | 0.667 | 0.868 | 0.919 | 0.967 | 0.964 | 0.801 | 0.831 | 0.618 | 0.813 | 0.750 | <0.001* |
| MCI Drink | 0.375 | 0.467 | 0.636 | 0.805 | 0.875 | 1.162 | 0.881 | 0.900 | 0.797 | 0.730 | 0.723 | | | |
| MCI Gel | 0.445 | 0.497 | 0.686 | 0.789 | 0.918 | 0.926 | 0.933 | 1.145 | 0.849 | 0.760 | 0.574 | | | |
| PE 18:0_18:1 | | | | | | | | | | | | | | |
| Cheese | 0.080 | 0.128 | 0.136 | 0.143 | 0.182 | 0.202 | 0.212 | 0.184 | 0.221 | 0.163 | 0.133 | | | |
| Hom. Cheese | 0.089 | 0.084 | 0.164 | 0.137 | 0.168 | 0.195 | 0.203 | 0.225 | 0.171 | 0.185 | 0.131 | 0.833 | 0.564 | <0.001* |
| MCI Drink | 0.083 | 0.105 | 0.138 | 0.158 | 0.193 | 0.244 | 0.192 | 0.199 | 0.185 | 0.159 | 0.171 | | | |
| MCI Gel | 0.089 | 0.106 | 0.134 | 0.170 | 0.197 | 0.198 | 0.213 | 0.254 | 0.199 | 0.182 | 0.138 | | | |
| PE 16:0_22:6 | | | | | | | | | | | | | | |
| Cheese | 0.221 | 0.262 | 0.231 | 0.244 | 0.288 | 0.272 | 0.262 | 0.227 | 0.286 | 0.236 | 0.221 | | | |
| Hom. Cheese | 0.234 | 0.180 | 0.283 | 0.244 | 0.245 | 0.253 | 0.272 | 0.269 | 0.239 | 0.272 | 0.231 | 0.794 | 0.174 | 0.022* |
| MCI Drink | 0.171 | 0.183 | 0.246 | 0.242 | 0.239 | 0.265 | 0.202 | 0.240 | 0.212 | 0.222 | 0.215 | | | |
| MCI Gel | 0.193 | 0.226 | 0.255 | 0.238 | 0.246 | 0.220 | 0.209 | 0.246 | 0.192 | 0.220 | 0.201 | | | |
| PE 18:0_20:4 | | | | | | | | | | | | | | |
| Cheese | 0.329 | 0.453 | 0.416 | 0.438 | 0.559 | 0.506 | 0.565 | 0.483 | 0.584 | 0.495 | 0.437 | | | |
| Hom. Cheese | 0.372 | 0.305 | 0.475 | 0.429 | 0.496 | 0.544 | 0.518 | 0.549 | 0.478 | 0.496 | 0.423 | 0.833 | 0.562 | <0.001* |
| MCI Drink | 0.298 | 0.322 | 0.410 | 0.441 | 0.506 | 0.576 | 0.461 | 0.478 | 0.422 | 0.417 | 0.449 | | | |
| MCI Gel | 0.318 | 0.376 | 0.440 | 0.442 | 0.506 | 0.477 | 0.504 | 0.538 | 0.465 | 0.463 | 0.375 | | | |
| PE 18:2_22:1 | | | | | | | | | | | | | | |
| Cheese | 39.710 | 42.988 | 37.436 | 35.693 | 43.560 | 40.425 | 42.981 | 42.256 | 49.570 | 44.956 | 48.597 | | | |
| Hom. Cheese | 43.243 | 35.578 | 46.275 | 37.381 | 37.567 | 41.949 | 41.338 | 47.545 | 45.366 | 46.135 | 47.329 | 0.833 | 0.149 | 0.003* |
| MCI Drink | 39.534 | 37.862 | 43.542 | 42.644 | 42.207 | 49.024 | 41.857 | 47.900 | 42.604 | 45.430 | 47.766 | | | |
| MCI Gel | 37.099 | 39.374 | 36.450 | 37.992 | 39.595 | 39.012 | 38.943 | 43.406 | 40.668 | 44.707 | 42.484 | | | |
| PE 18:0_22:6 | | | | | | | | | | | | | | |
| Cheese | 0.109 | 0.136 | 0.126 | 0.134 | 0.160 | 0.142 | 0.137 | 0.125 | 0.162 | 0.122 | 0.112 | | | |
| Hom. Cheese | 0.114 | 0.097 | 0.147 | 0.140 | 0.130 | 0.151 | 0.152 | 0.147 | 0.129 | 0.147 | 0.111 | 0.794 | 0.294 | <0.001* |
| MCI Drink | 0.090 | 0.103 | 0.128 | 0.130 | 0.136 | 0.134 | 0.110 | 0.131 | 0.107 | 0.121 | 0.110 | | | |
| MCI Gel | 0.098 | 0.119 | 0.135 | 0.134 | 0.151 | 0.141 | 0.119 | 0.138 | 0.115 | 0.124 | 0.110 | | | |

Table S4. Relative level of phosphatidylcholine (PC) in plasma samples. Data were analyzed by repeated measures using linear mixed model. Overall participant and within-visit participant differences were included as random factors and the analyses were adjusted for BMI, age and visit. q-values indicate FDR-adjusted p-values for meal-time interactions ($q_{meal*time}$), the effect of meal (q_{meal}) and the effect of time (q_{time}). * indicate significant differences ($q < 0.05$).

| | 0 | 30 | 60 | 90 | 120 | 180 | 240 | 300 | 360 | 420 | 480 | Q _{meal*time} | Q _{meal} | Q _{time} |
|--------------|--------|--------|--------|--------|--------|--------|--------|--------|--------|--------|--------|------------------------|-------------------|-------------------|
| PC 16:0_16:1 | | | | | | | | | | | | | | |
| Cheese | 5.072 | 6.429 | 5.195 | 4.978 | 5.768 | 5.895 | 7.162 | 6.499 | 8.269 | 7.910 | 8.597 | 0.833 | 0.564 | <0.001* |
| Hom. Cheese | 5.753 | 4.494 | 6.105 | 5.191 | 5.331 | 5.902 | 6.243 | 7.941 | 7.432 | 7.813 | 8.242 | | | |
| MCI Drink | 5.122 | 5.259 | 5.680 | 5.494 | 5.913 | 6.845 | 6.473 | 7.240 | 6.908 | 7.992 | 8.298 | | | |
| MCI Gel | 4.574 | 5.456 | 4.953 | 5.009 | 5.543 | 5.854 | 5.902 | 7.269 | 7.080 | 7.664 | 7.347 | | | |
| PC 16:0_16:0 | | | | | | | | | | | | | | |
| Cheese | 9.691 | 10.666 | 8.838 | 8.989 | 10.020 | 10.662 | 12.474 | 10.998 | 13.568 | 12.495 | 13.222 | 0.805 | 0.564 | <0.001* |
| Hom. Cheese | 10.758 | 8.738 | 10.896 | 9.163 | 9.332 | 10.745 | 11.036 | 13.769 | 12.184 | 13.256 | 13.787 | | | |
| MCI Drink | 9.434 | 9.276 | 10.107 | 10.071 | 10.277 | 11.412 | 11.241 | 11.937 | 11.556 | 12.747 | 13.527 | | | |
| MCI Gel | 8.390 | 9.716 | 8.940 | 9.235 | 9.537 | 10.199 | 10.678 | 12.783 | 11.906 | 12.840 | 11.714 | | | |
| PC 16:0_18:2 | | | | | | | | | | | | | | |
| Cheese | 0.003 | 0.003 | 0.003 | 0.002 | 0.003 | 0.003 | 0.003 | 0.003 | 0.003 | 0.003 | 0.003 | 0.833 | 0.164 | 0.001* |
| Hom. Cheese | 0.003 | 0.002 | 0.003 | 0.002 | 0.003 | 0.003 | 0.003 | 0.003 | 0.003 | 0.004 | 0.003 | | | |
| MCI Drink | 0.003 | 0.002 | 0.003 | 0.003 | 0.003 | 0.004 | 0.003 | 0.003 | 0.003 | 0.002 | 0.003 | | | |
| MCI Gel | 0.002 | 0.003 | 0.002 | 0.003 | 0.003 | 0.003 | 0.003 | 0.003 | 0.003 | 0.003 | 0.002 | | | |
| PC 16:0_18:1 | | | | | | | | | | | | | | |
| Cheese | 0.080 | 0.119 | 0.110 | 0.119 | 0.161 | 0.168 | 0.179 | 0.163 | 0.205 | 0.141 | 0.147 | 0.833 | 0.562 | <0.001* |
| Hom. Cheese | 0.087 | 0.069 | 0.112 | 0.109 | 0.137 | 0.162 | 0.170 | 0.198 | 0.144 | 0.174 | 0.130 | | | |
| MCI Drink | 0.070 | 0.075 | 0.106 | 0.108 | 0.135 | 0.186 | 0.151 | 0.173 | 0.148 | 0.139 | 0.149 | | | |
| MCI Gel | 0.082 | 0.078 | 0.109 | 0.125 | 0.150 | 0.156 | 0.173 | 0.198 | 0.160 | 0.152 | 0.118 | | | |
| PC 16:0_20:5 | | | | | | | | | | | | | | |
| Cheese | 7.267 | 7.671 | 7.812 | 6.360 | 7.453 | 7.653 | 9.415 | 8.291 | 9.414 | 8.634 | 9.388 | 0.833 | 0.424 | <0.001* |
| Hom. Cheese | 8.642 | 7.502 | 8.155 | 7.351 | 6.508 | 7.693 | 7.898 | 9.940 | 8.471 | 9.984 | 9.000 | | | |
| MCI Drink | 6.176 | 6.866 | 7.739 | 6.835 | 6.551 | 8.149 | 7.295 | 8.388 | 7.607 | 8.182 | 7.672 | | | |
| MCI Gel | 5.874 | 6.201 | 6.680 | 6.570 | 7.472 | 6.772 | 7.842 | 8.060 | 8.084 | 9.056 | 7.324 | | | |
| PC 16:0_20:4 | | | | | | | | | | | | | | |
| Cheese | 53.017 | 57.307 | 51.906 | 48.563 | 59.892 | 56.121 | 58.931 | 59.369 | 69.447 | 60.739 | 68.412 | 0.833 | 0.123 | 0.001* |
| Hom. Cheese | 61.113 | 50.573 | 63.995 | 50.759 | 50.825 | 57.478 | 56.898 | 65.733 | 64.281 | 64.382 | 66.614 | | | |
| MCI Drink | 52.989 | 50.125 | 59.369 | 56.005 | 57.183 | 65.967 | 55.036 | 64.754 | 57.382 | 60.446 | 64.003 | | | |
| MCI Gel | 48.995 | 50.552 | 49.740 | 52.496 | 55.114 | 52.344 | 52.093 | 58.255 | 54.810 | 62.010 | 57.733 | | | |
| PC 16:0_20:3 | | | | | | | | | | | | | | |
| Cheese | 36.308 | 39.683 | 34.406 | 34.264 | 40.785 | 37.169 | 39.692 | 38.950 | 45.608 | 40.448 | 44.691 | 0.833 | 0.149 | 0.015* |

| | | | | | | | | | | | | | | |
|--------------|--------|--------|--------|--------|--------|--------|--------|--------|--------|--------|--------|-------|-------|---------|
| Hom. Cheese | 40.125 | 32.712 | 43.470 | 35.083 | 34.249 | 39.334 | 37.746 | 44.598 | 40.977 | 42.145 | 43.873 | 0.833 | 0.149 | 0.001* |
| MCI Drink | 36.841 | 35.994 | 40.062 | 39.637 | 39.498 | 44.632 | 39.277 | 45.303 | 39.322 | 42.059 | 43.593 | | | |
| MCI Gel | 34.328 | 37.643 | 33.424 | 36.397 | 37.211 | 36.100 | 36.261 | 41.057 | 37.225 | 40.547 | 38.605 | | | |
| PC 18:0_18:2 | | | | | | | | | | | | | | |
| Cheese | 62.528 | 66.782 | 59.592 | 58.044 | 68.535 | 64.647 | 68.489 | 67.666 | 79.597 | 69.881 | 75.162 | 0.794 | 0.564 | <0.001* |
| Hom. Cheese | 72.295 | 58.446 | 74.605 | 62.109 | 62.004 | 69.370 | 68.449 | 80.272 | 75.143 | 75.214 | 79.318 | | | |
| MCI Drink | 62.839 | 63.981 | 71.910 | 70.142 | 70.584 | 80.326 | 69.793 | 80.915 | 71.258 | 75.330 | 77.505 | | | |
| MCI Gel | 59.248 | 63.692 | 58.446 | 63.375 | 66.344 | 64.022 | 65.910 | 72.556 | 66.974 | 75.973 | 70.297 | | | |
| PC 18:0_18:1 | | | | | | | | | | | | 0.833 | 0.553 | 0.001* |
| Cheese | 10.063 | 11.722 | 9.892 | 9.504 | 11.278 | 10.647 | 11.742 | 11.232 | 13.710 | 12.394 | 13.594 | | | |
| Hom. Cheese | 11.796 | 9.269 | 11.838 | 10.103 | 9.614 | 10.601 | 11.082 | 13.276 | 12.670 | 12.951 | 13.184 | | | |
| MCI Drink | 10.075 | 9.954 | 11.349 | 11.320 | 10.891 | 13.128 | 11.358 | 12.884 | 11.775 | 12.952 | 12.651 | | | |
| MCI Gel | 9.613 | 10.346 | 9.989 | 10.332 | 10.937 | 10.354 | 10.841 | 12.370 | 11.398 | 13.065 | 12.134 | | | |
| PC 18:1_20:4 | | | | | | | | | | | | 0.833 | 0.553 | 0.001* |
| Cheese | 22.339 | 24.184 | 21.813 | 20.986 | 24.327 | 23.586 | 25.371 | 24.012 | 29.151 | 25.502 | 27.689 | | | |
| Hom. Cheese | 25.147 | 21.602 | 26.453 | 22.323 | 20.985 | 24.125 | 24.540 | 29.716 | 26.066 | 28.699 | 27.587 | | | |
| MCI Drink | 21.489 | 21.505 | 24.650 | 23.075 | 23.667 | 26.302 | 23.154 | 26.668 | 23.934 | 25.408 | 26.315 | | | |
| MCI Gel | 20.371 | 21.866 | 21.521 | 22.479 | 24.124 | 22.226 | 22.567 | 24.615 | 24.081 | 26.155 | 24.755 | | | |

Table S5. List of investigated metabolites. CER, ceramide; LPC, lysophosphatidylcholine; LPE, lysophosphatidylethanolamine; PC, phosphatidylcholine; PE, phosphatidylethanolamine; SM, sphingomyelin.

| | Class | Species |
|----|-------|---------------|
| 1 | CER | CER 18:0_18:1 |
| 2 | | CER 18:0_18:2 |
| 3 | | CER 18:0_20:2 |
| 4 | | CER 18:0_22:1 |
| 5 | | CER 18:0_24:0 |
| 6 | | CER 18:0_26:2 |
| 7 | | CER 18:0_26:3 |
| 8 | LPC | LPC 16:3 |
| 9 | | LPC 18:0 |
| 10 | | LPC 18:1 |
| 11 | | LPC 18:4 |
| 12 | | LPC 20:0 |
| 13 | | LPC 22:0 |
| 14 | | LPC 24:0 |
| 15 | LPE | LPE 16:0 |
| 16 | | LPE 18:0 |
| 17 | | LPE 18:1 |
| 18 | | LPE 18:2 |
| 19 | | LPE 20:1 |
| 20 | | LPE 20:2 |
| 21 | | LPE 20:3 |
| 22 | | LPE 22:6 |
| 23 | PC | PC 16:0_16:0 |
| 24 | | PC 16:0_16:1 |
| 25 | | PC 16:0_18:1 |
| 26 | | PC 16:0_18:2 |
| 27 | | PC 16:0_20:3 |
| 28 | | PC 16:0_20:4 |
| 29 | | PC 16:0_20:5 |
| 30 | | PC 18:0_18:1 |
| 31 | | PC 18:0_18:2 |
| 32 | | PC 18:1_20:4 |
| 33 | PE | PE 16:0_18:1 |
| 34 | | PE 16:0_18:2 |
| 35 | | PE 16:0_20:4 |
| 36 | | PE 16:0_22:6 |
| 37 | | PE 18:0_16:0 |
| 38 | | PE 18:0_18:1 |
| 39 | | PE 18:0_18:2 |
| 40 | | PE 18:0_20:4 |
| 41 | | PE 18:0_22:6 |
| 42 | | PE 18:1_16:0 |
| 43 | | PE 18:1_18:0 |

| | | |
|----|----|--------------|
| 44 | | PE 18:1_18:1 |
| 45 | | PE 18:2_22:1 |
| 46 | SM | SM 18:0_14:0 |
| 47 | | SM 18:0_20:0 |
| 48 | | SM 18:0_22:0 |
| 49 | | SM 18:0_22:1 |
| 50 | | SM 18:0_23:0 |
| 51 | | SM 18:0_24:0 |
| 52 | | SM 18:1_22:0 |
| 53 | | SM 18:1_23:0 |

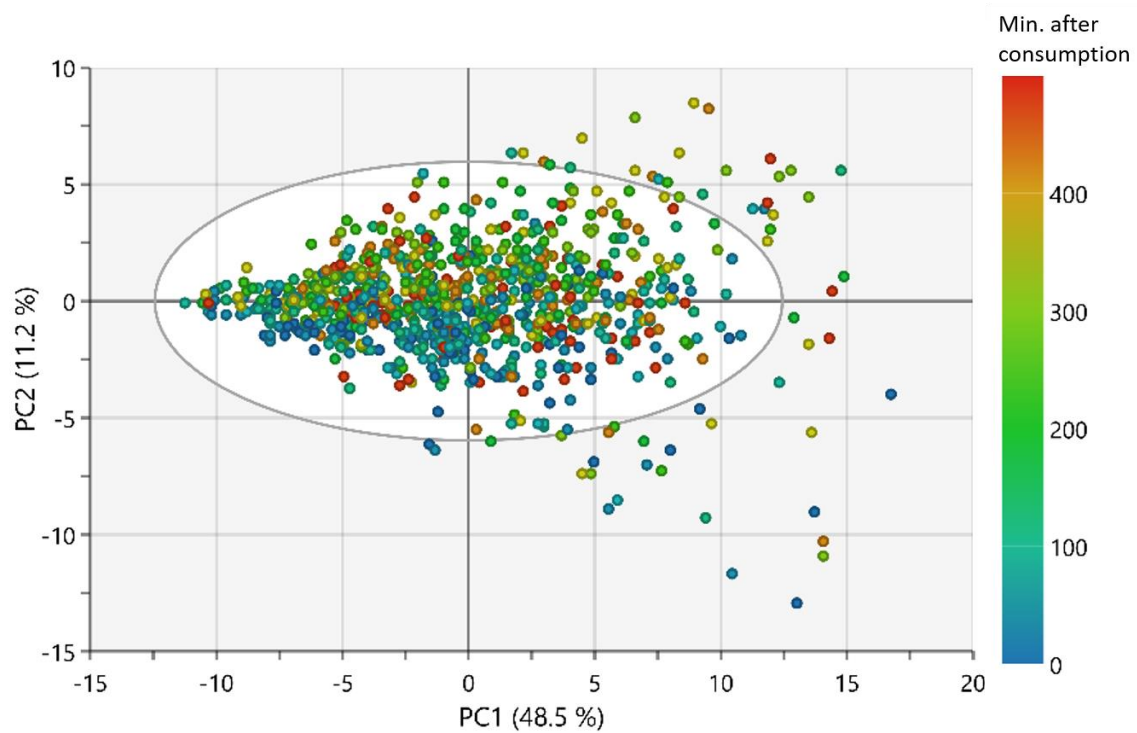


Figure S1. PCA scores plot of phospholipid content in plasma samples obtained from LC-MS. Colors indicate time after consumption of test meals.

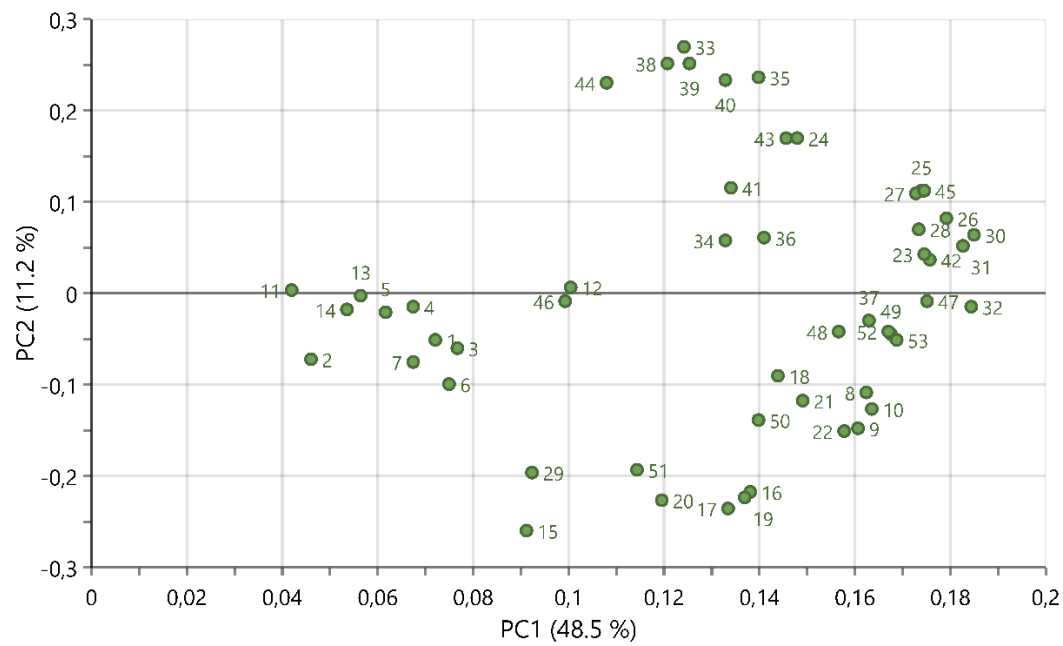
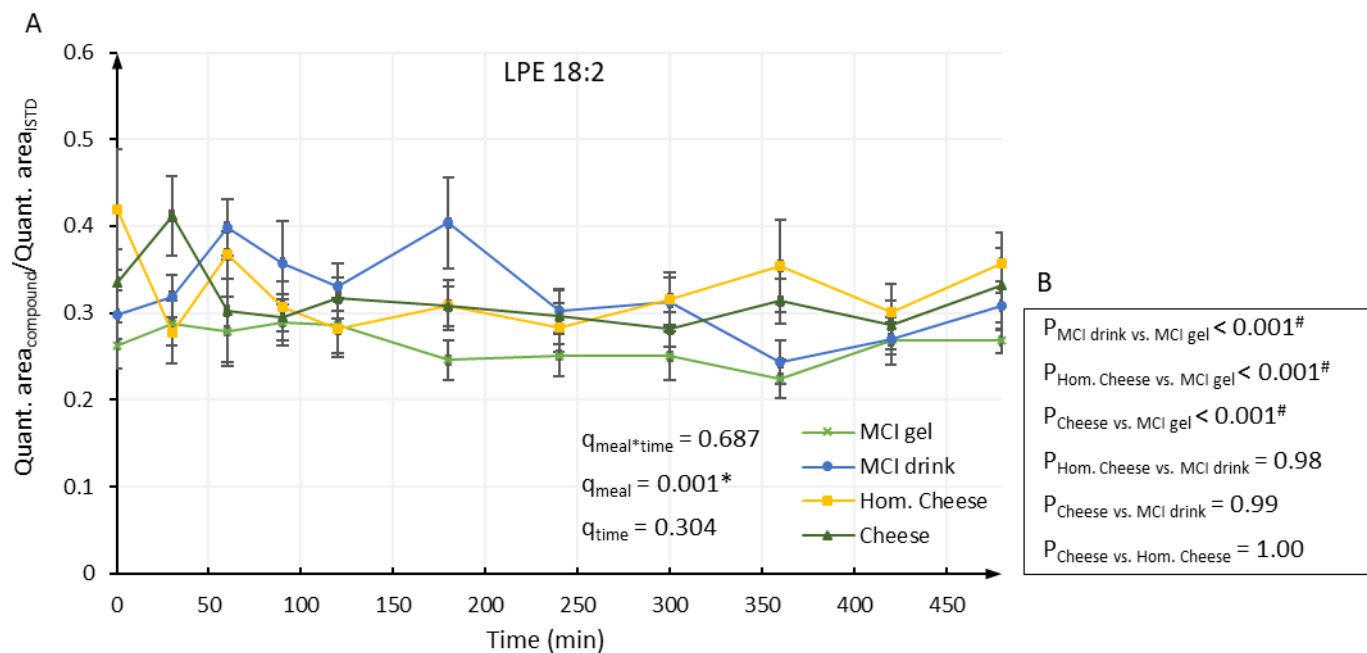
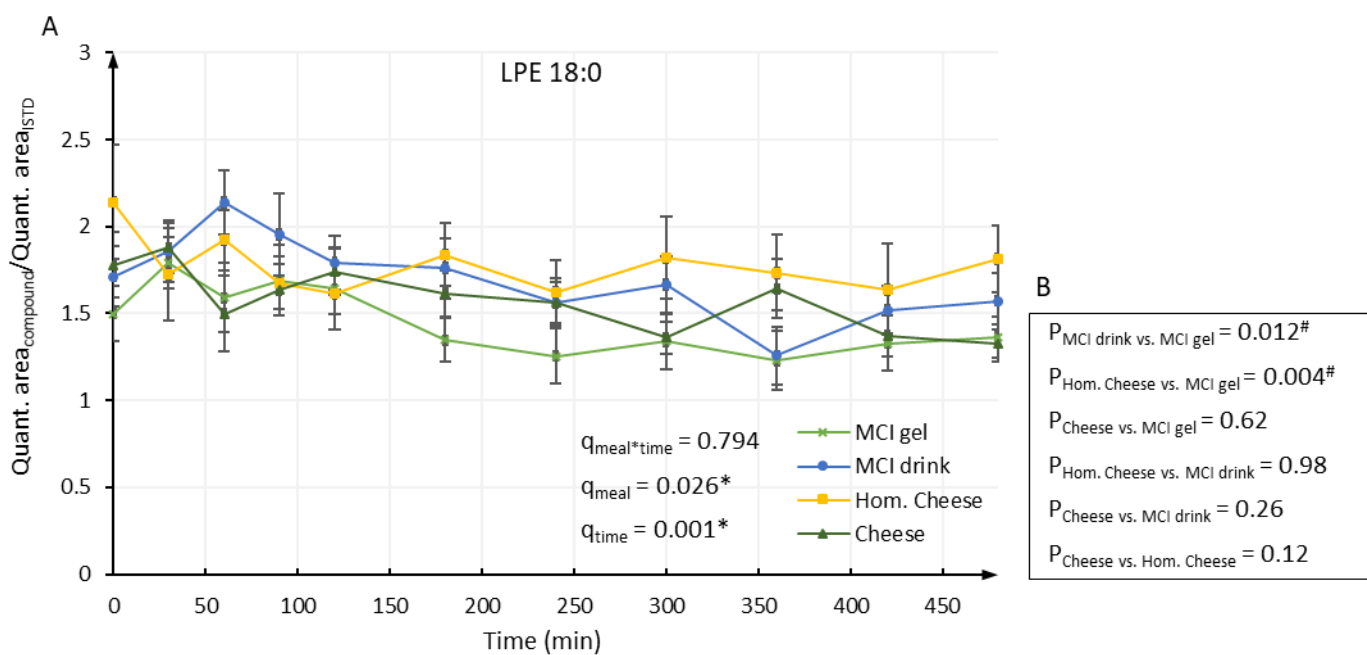


Figure S2. Corresponding PCA loadings plots containing 53 phospholipids. The phospholipids belonging to each of the numbers can be seen in Table S5.

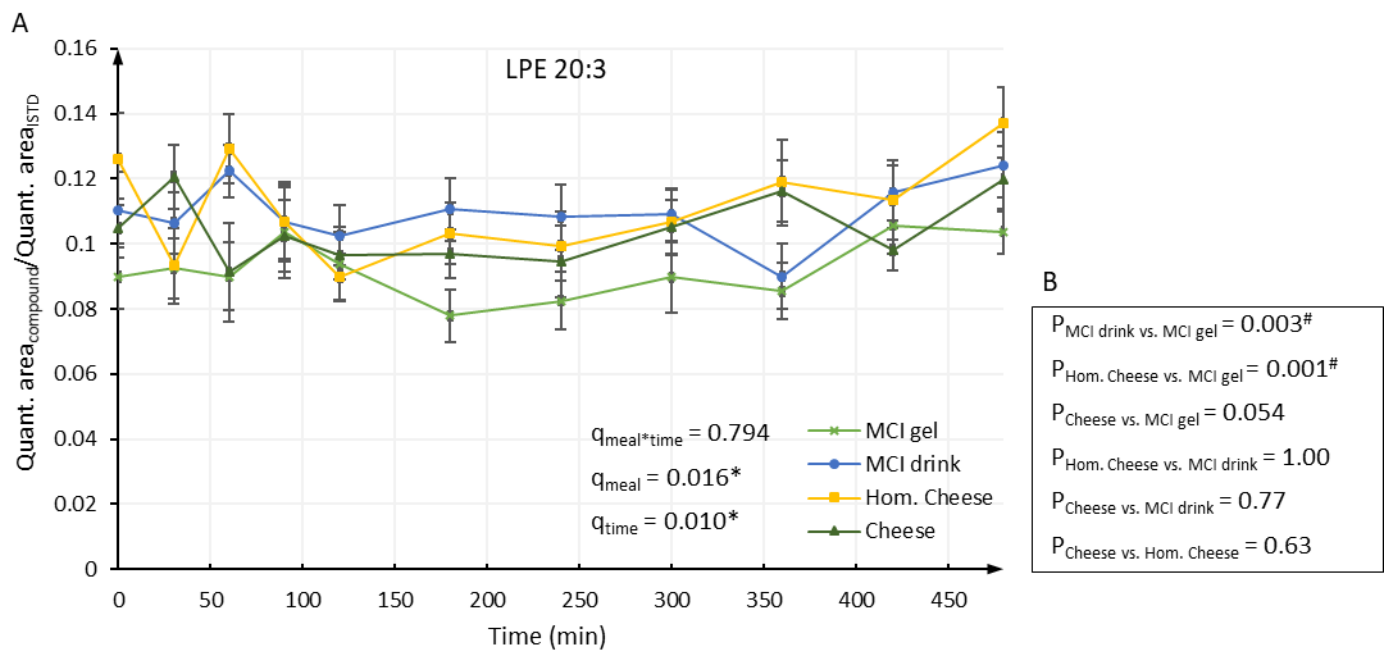
1)



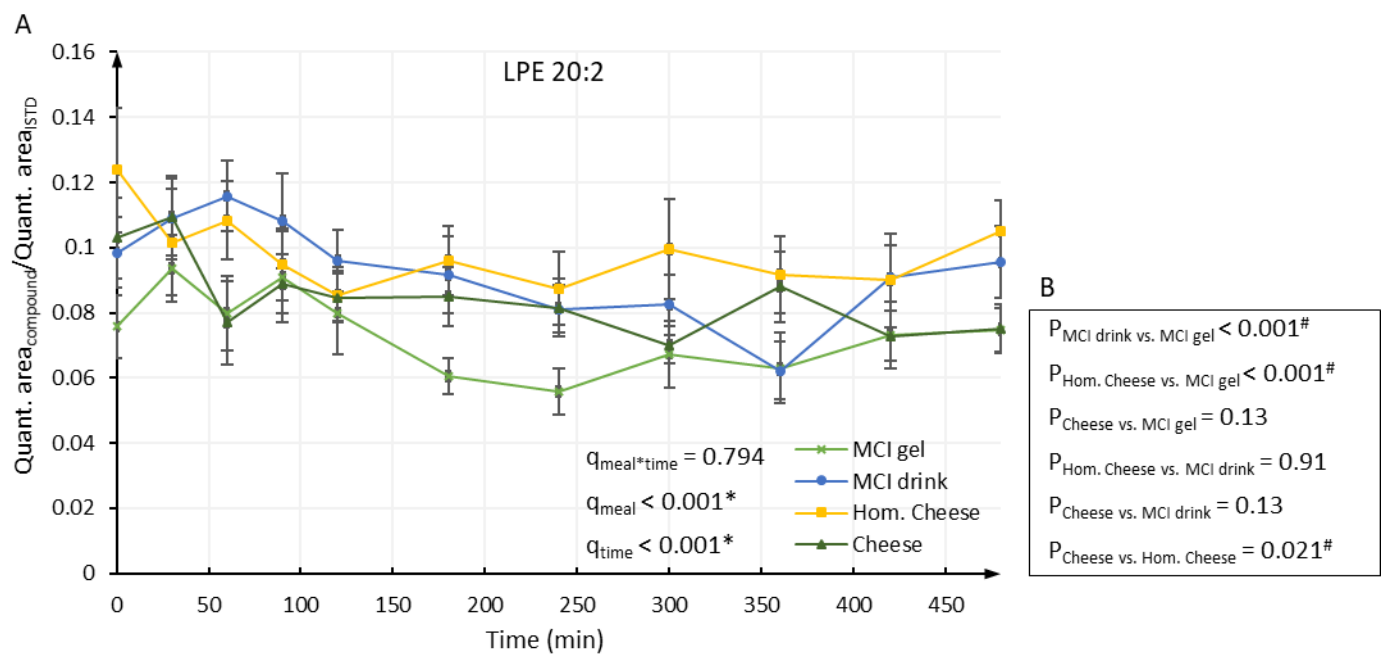
2)



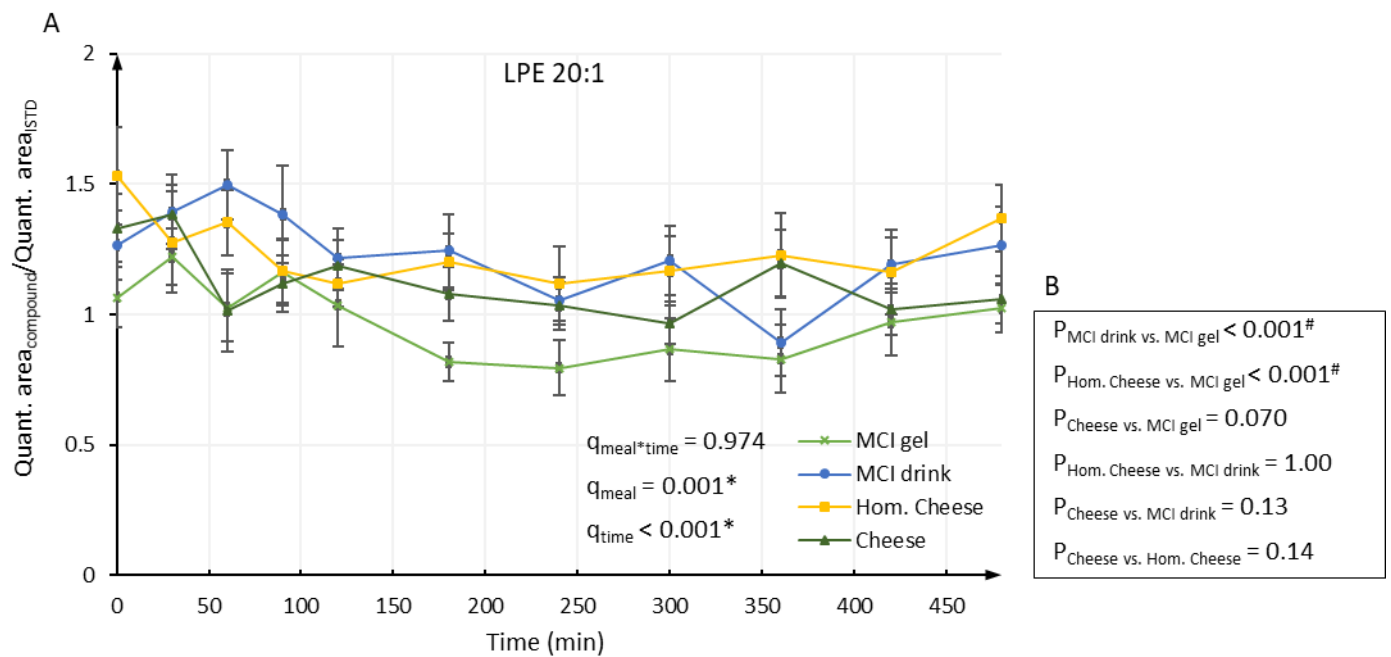
3)



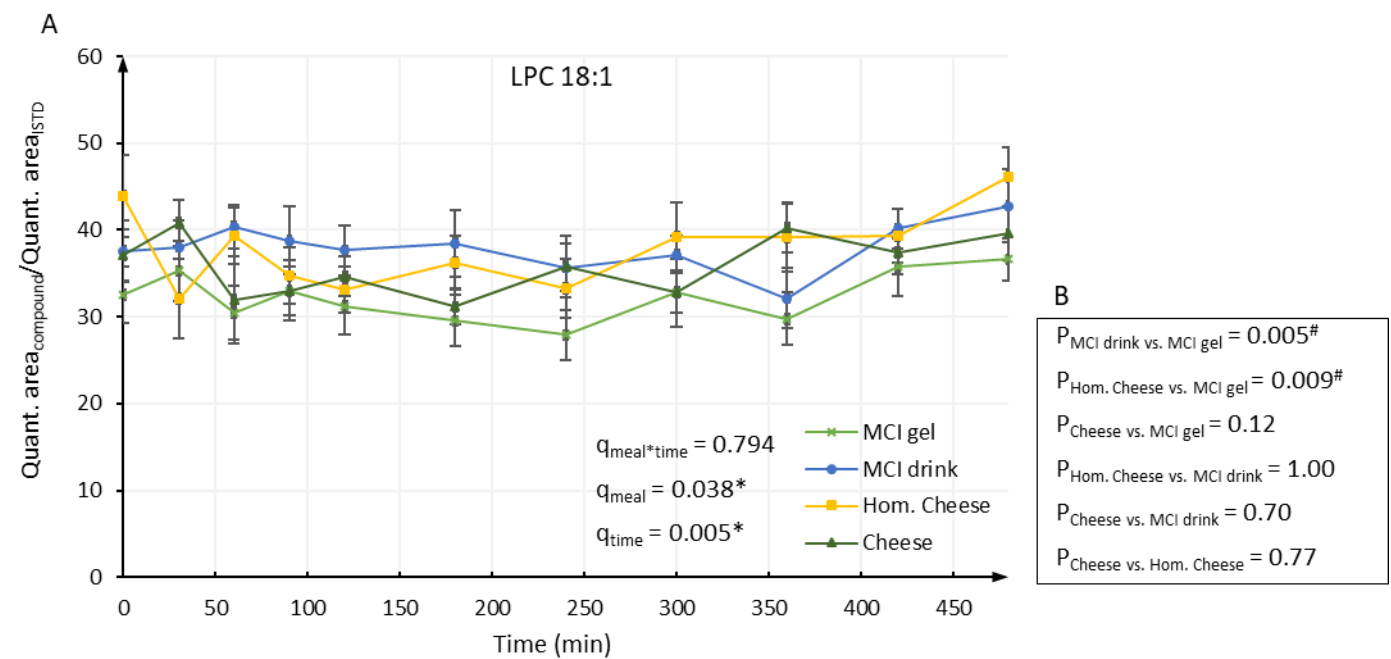
4)



5)



6)



7)

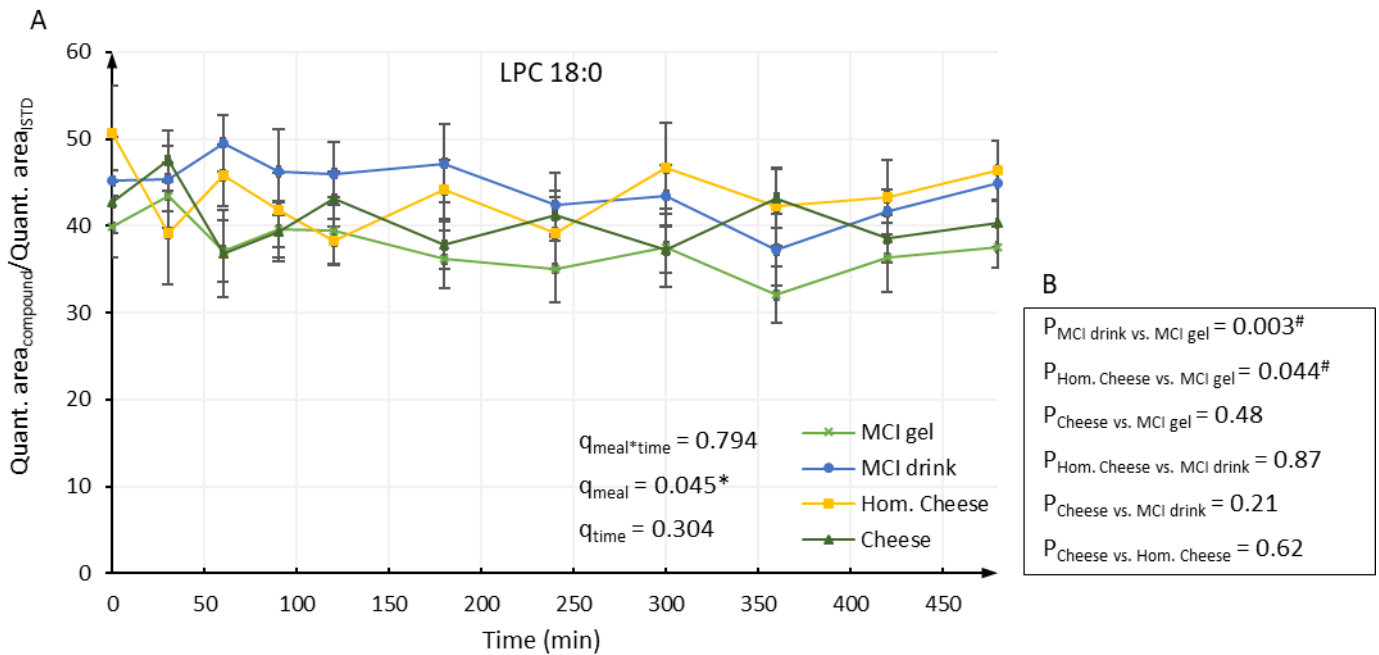


Figure S3. Relative level of phospholipids in plasma samples for 1) LPE 18:2, 2) LPE 18:0, 3) LPE 20:3, 4) LPE 20:2, 5) LPE 20:1, 6) LPC 18:1, 7) LPC 18:0. A) Data were analyzed by repeated measures using linear mixed model. Overall participant and within-visit participant differences were included as random factors and the analyses were adjusted for BMI, age and visit. q -values indicate FDR-adjusted p -values for meal-time interactions ($q_{\text{meal} \times \text{time}}$), the effect of meal (q_{meal}) and the effect of time (q_{time}). * indicate significant differences ($q < 0.05$). B) p -values obtained from Tukey's all-pairwise comparison conducted when a significant meal effect was observed in repeated measures analysis. # indicate significant differences ($p < 0.05$).