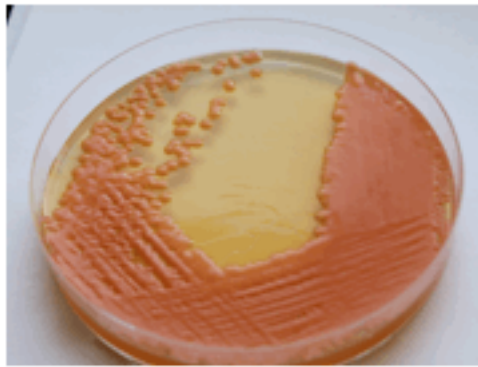
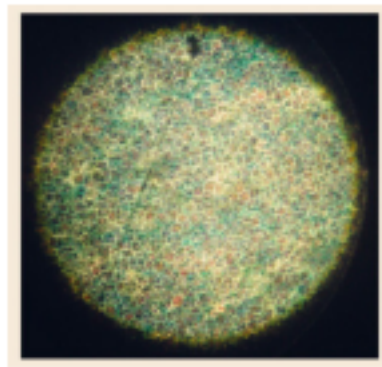


(a)



(b)



(c)

Figure S1. Colonies of *R. diobovata* DSBKA06 in YNB (a) and GYP (b) media; the same yeast cells observed at optic microscope (c).

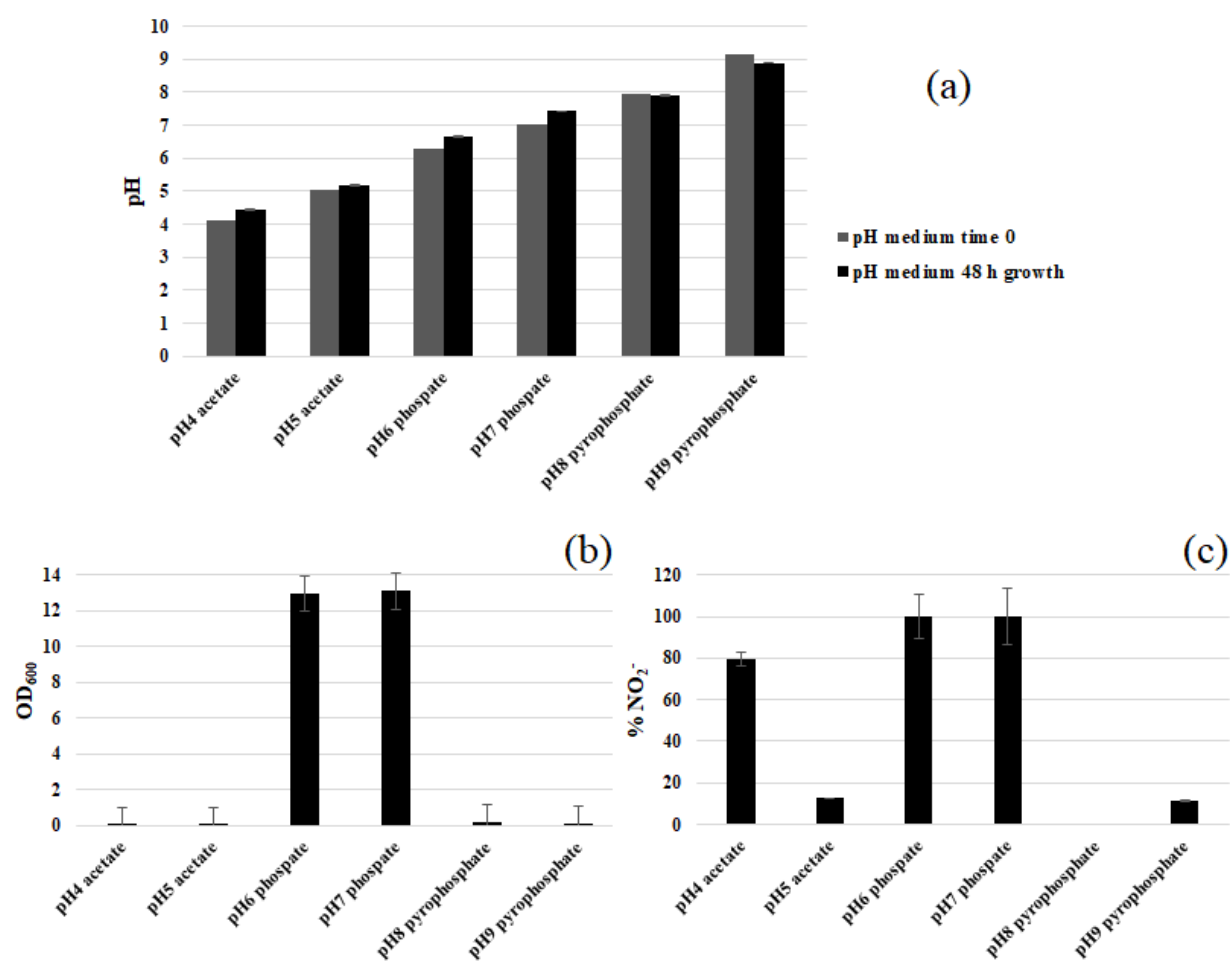


Figure S2. Influence of pH on *R. diobovata* DSBKA06 growth. In panel (a) initial and final pH values tested. Panels (b) and (c) report the corresponding growth and nitrite removal 48 h.

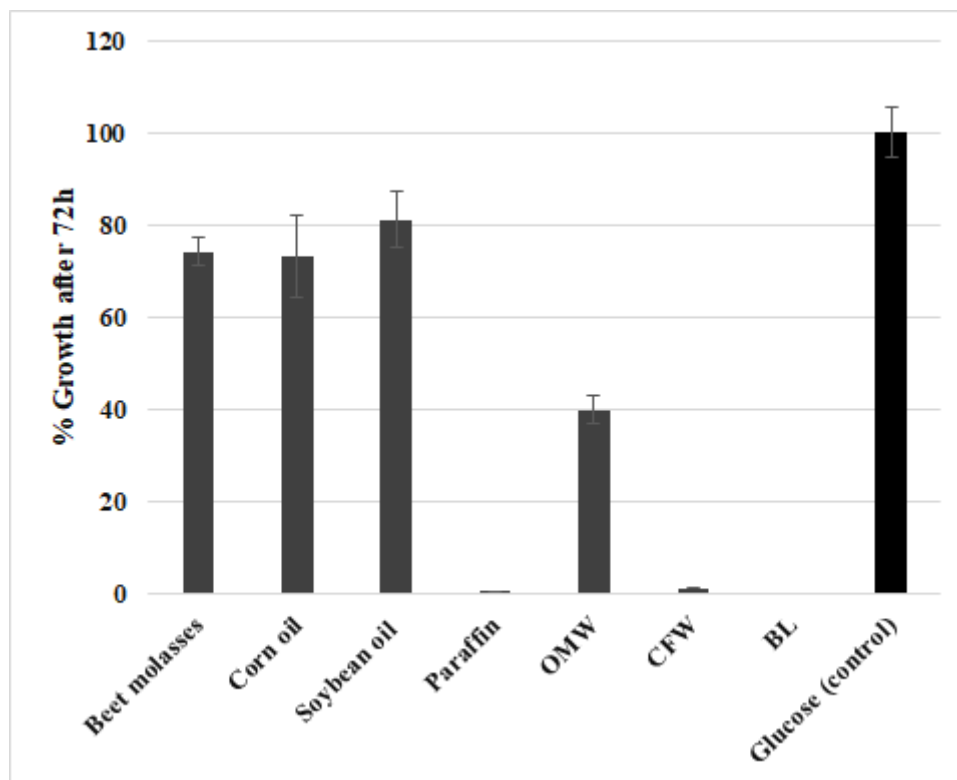


Figure S3. *R. diobovata* DSBKA06 growth in YNB using different renewable wastes as carbon sources. (OMW: olive mill wastewater; CFW: cork factory wastewater; BL: neutralized black liquor).