

Macroinvertebrate response to internal nutrient loading increases in shallow eutrophic lakes

Kai Peng¹, Rui Dong^{1,2}, Boqiang Qin^{1,3}, Yongjiu Cai^{1,4*}, Jianming Deng¹, Zhijun Gong^{1,4}

1 Taihu Laboratory for Lake Ecosystem Research, State Key Laboratory of Lake Science and Environment, Nanjing Institute of Geography and Limnology, Chinese Academy of Sciences, 73 East Beijing Road, Nanjing 210008, P.R. China; kpeng@niglas.ac.cn (K.P); dongrui21@mails.ucas.ac.cn (R.D); qinbq@niglas.ac.cn (B.Q); caiyj@niglas.ac.cn (Y.C); jmdeng@niglas.ac.cn (J.D); zjgong@niglas.ac.cn (Z.G)

2University of Chinese Academy of Sciences, Beijing 100049

3 School of Geography & Ocean Science, Nanjing University, 163 Xianlin Street, Nanjing 210023, P.R. China.

4 Collaborative Innovation Center of Recovery and Reconstruction of Degraded Ecosystem in Wanjiang Basin Co-founded by Anhui Province and Ministry of Education, Anhui Normal University

*Correspondence: caiyj@niglas.ac.cn

Table S1 Macroinvertebrates dominant species in North the Lake Taihu at different stages

Stage	Species number	Dominant species
2007-2013	39	<i>Limnodrilus hoffmeisteri</i>
		<i>Grandidierella taihuensis</i>
		<i>Corbicula fluminea</i>
		<i>Rhyacodrilus sinicus</i>
		<i>Tanypus chinensis</i>
		<i>Branchiura sowerbyi</i>
		<i>Potamilla acuminata</i>
		<i>Nephtys oligobranchia</i>
		<i>Notomastus latericeus</i>
		<i>Bellamya aeruginosa</i>
		<i>Dero</i> sp.
		<i>Chironomus flaviplumus</i>
		<i>Paranthura</i> sp.
		<i>Propiloscerus akamusi</i>
		<i>Boccardia proboscidea</i>
		<i>Microchironomus tabarui</i>
		<i>Sphaerium lacustre</i>
		<i>Semisulcospira cancelata</i>
		<i>Stenothyra glabra</i>
		<i>Procladius choreus</i>
2014-2019	37	<i>Limnodrilus hoffmeisteri</i>
		<i>Corbicula fluminea</i>
		<i>Tanypus chinensis</i>
		<i>Grandidierella taihuensis</i>
		<i>Microchironomus tabarui</i>
		<i>Propiloscerus akamusi</i>
		<i>Paranthura</i> sp.
		<i>Branchiura sowerbyi</i>
		<i>Stenothyra glabra</i>
		<i>Bellamya aeruginosa</i>
		<i>Procladius choreus</i>
		<i>Nephtys oligobranchia</i>
		<i>Cryptochironomus</i> sp.
		<i>Chironomus flaviplumus</i>
		<i>Sphaerium lacustre</i>
		<i>Nereis japonica</i>
		<i>Potamilla acuminata</i>
		<i>Semisulcospira cancelata</i>

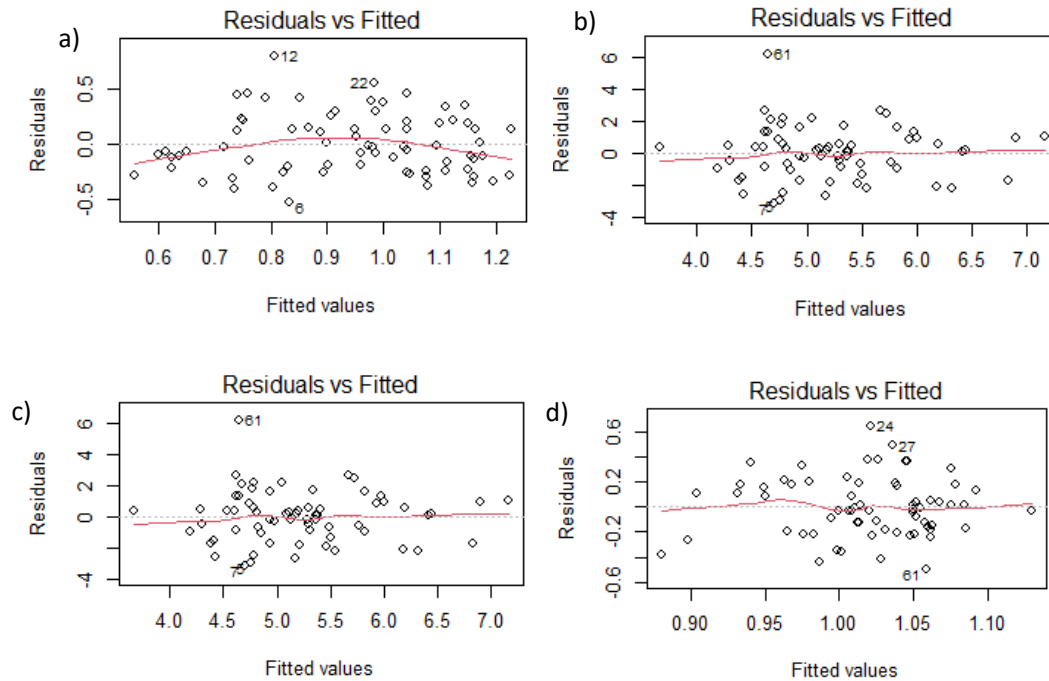


Figure S1 The Residuals vs Fitted plot between the density of all oligochaetes, the Shannon–Wiener index and the TLI index in northern Lake Taihu in different periods. (a: oligochaetes VS TLI index during 2007-2013; b: oligochaetes VS TLI index during 2014-2019; c: Shannon–Wiener index VS TLI index during 2007-2013; d: Shannon–Wiener index VS TLI index during 2013-2019)

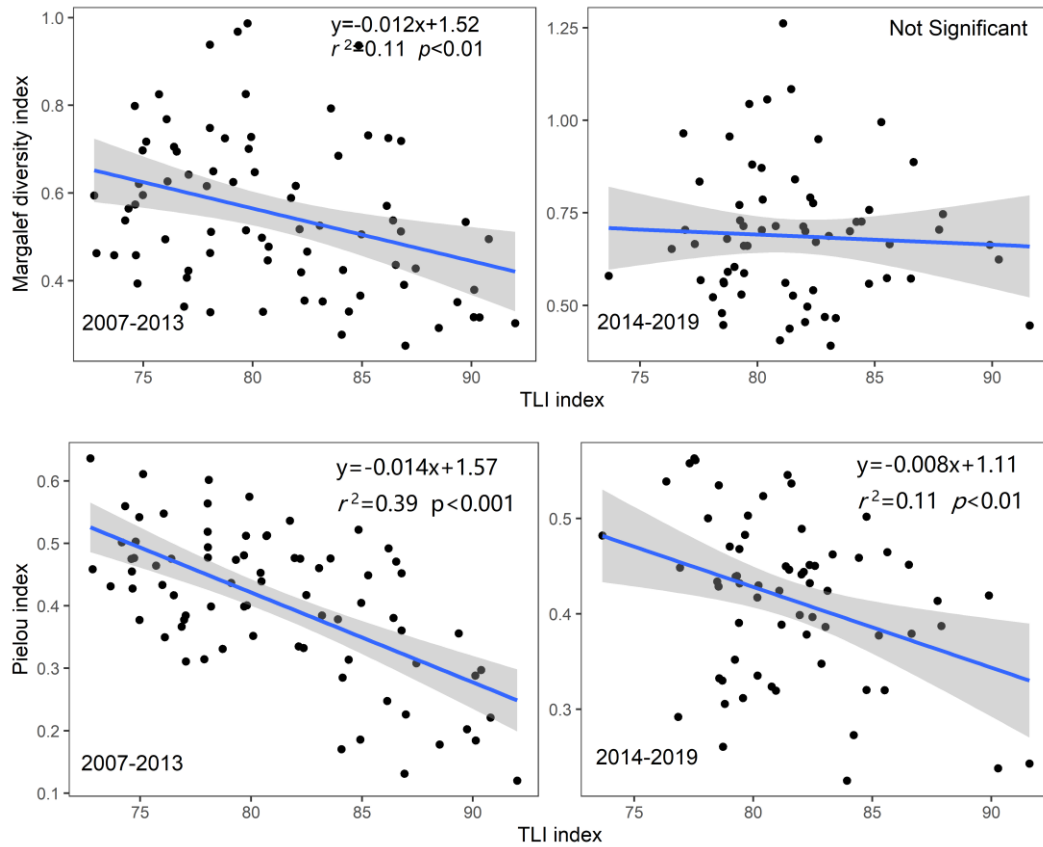


Figure S2 The relationship between the Pielou index and Margalef diversity index vs. the TLI index in North Taihu Lake in different periods.

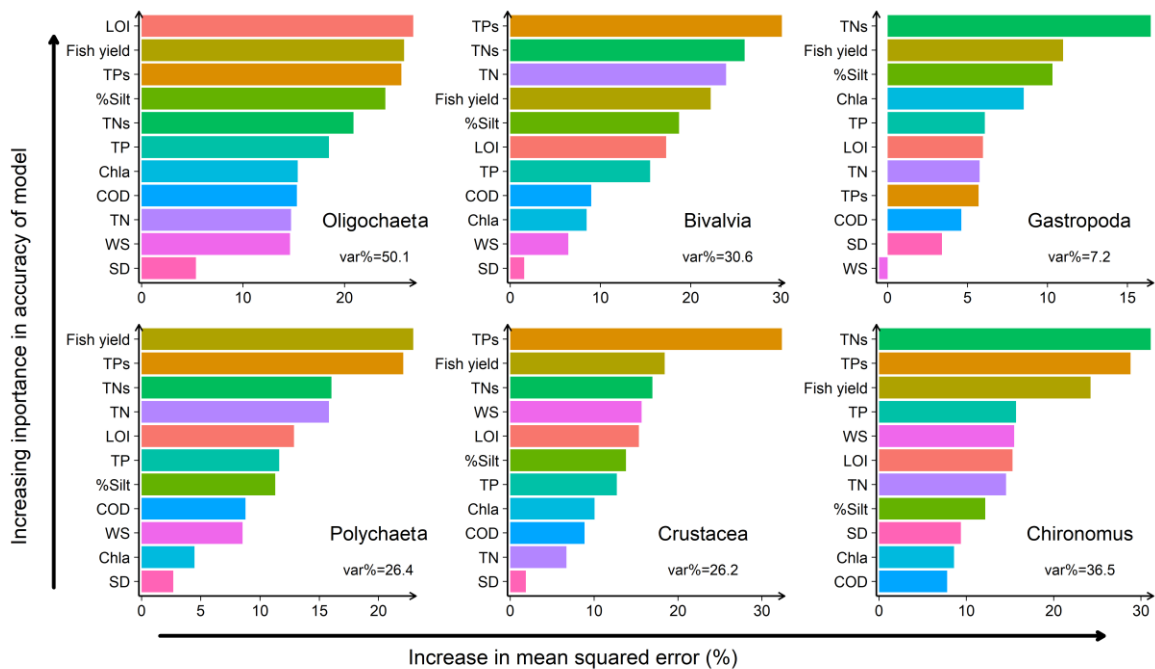


Figure S3 Ranking the importance of environmental factors on different classes of macroinvertebrates in the random forest model.