

Table S1: Factors and levels for the (CCD) $2^2$  experiment of arsenic adsorption by BCXZM composite.

Factor	Name	Low Level	Middle Level	High Level
A	pH	4.5	5.75	7
B	As(V)	15	30	45

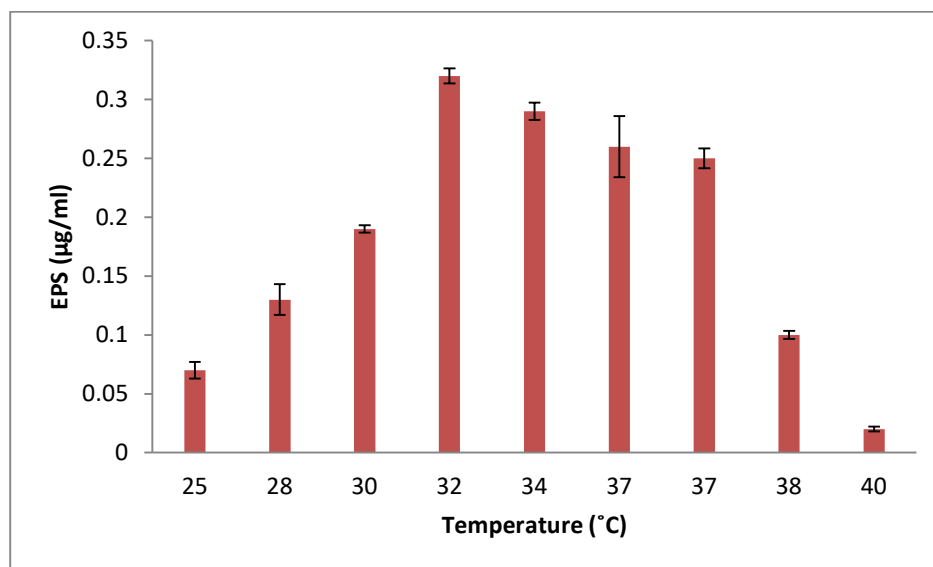


Figure S1: EPS formation by *Bacillus XZM* at different Temperature

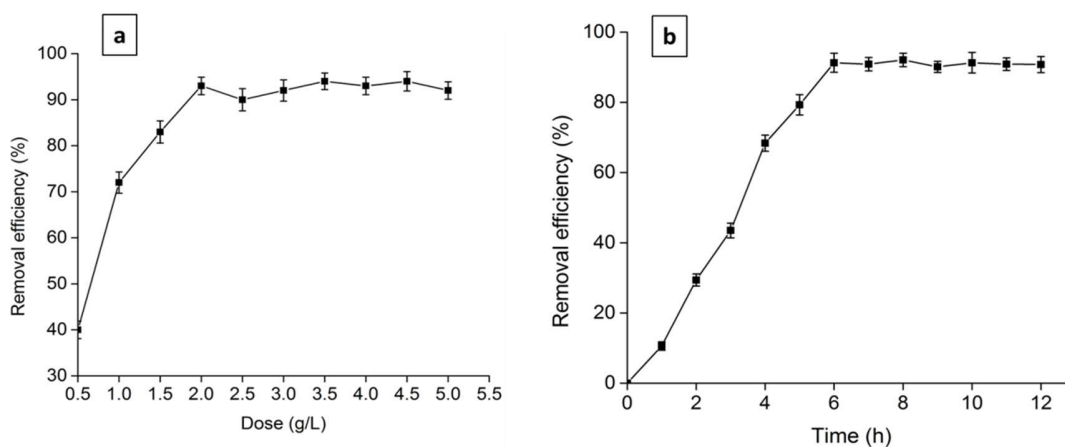


Figure S2: Removal efficiency of the As(V) at different a) dose of BCXZM composite and b) time interval while keeping dose of BCXZM at 2 g/L