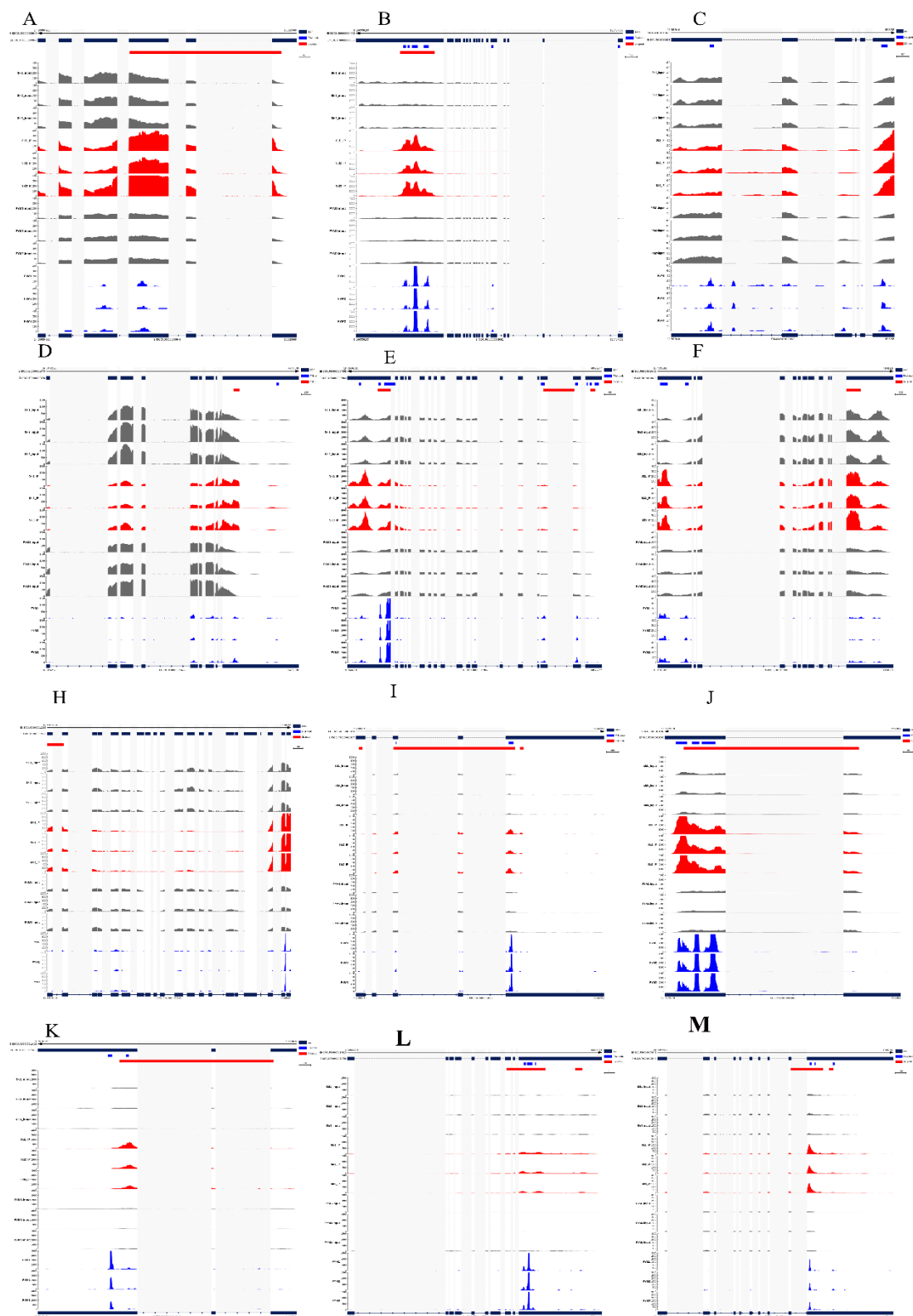


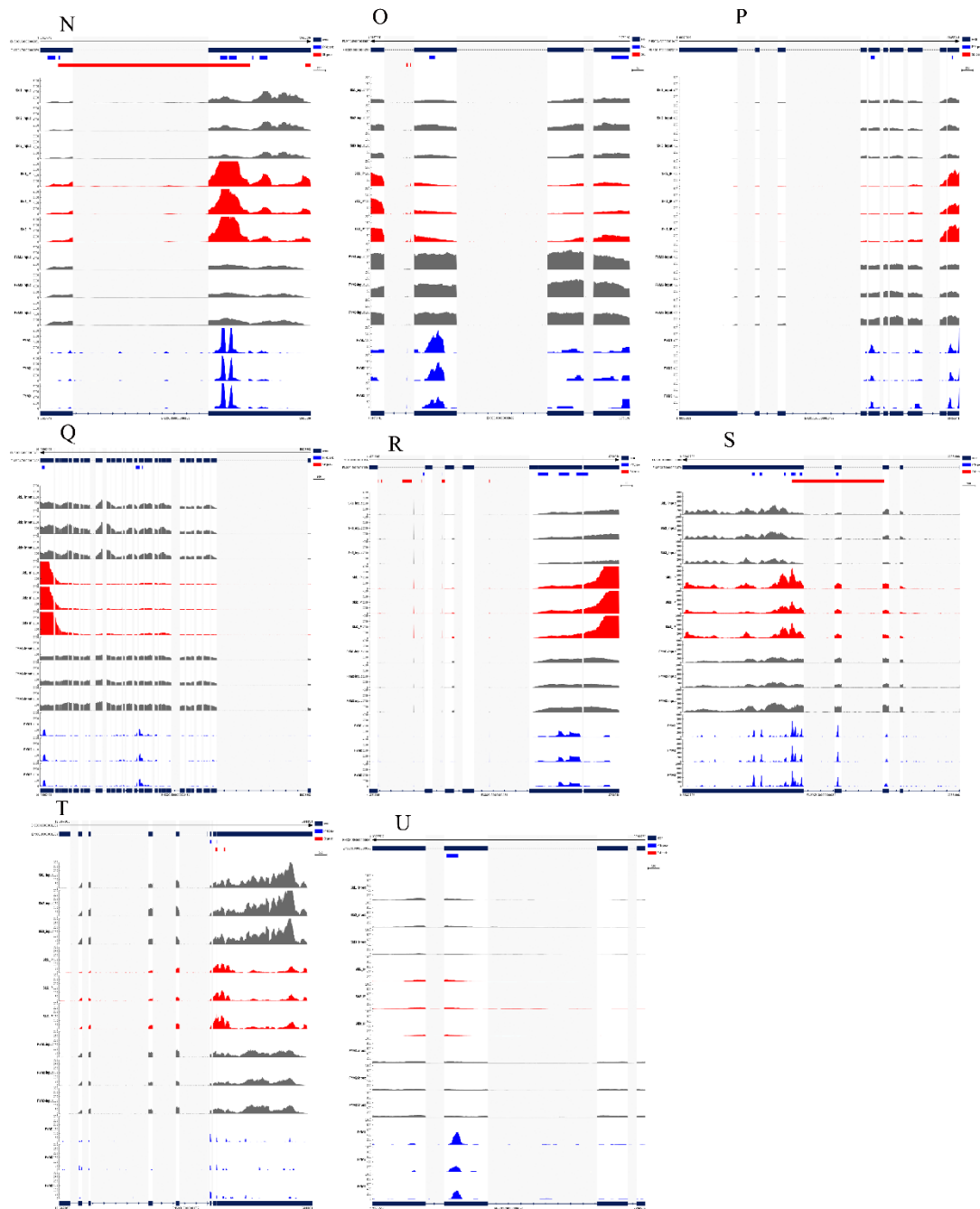
Supplement Table S1. Summary of reads quality control.

Sample	Raw_Reads	Q20%	Q30%	GC%
Ski1-IP	86509634	97.95	94.03	51.39
Ski2-IP	71769462	97.96	94.06	52.10
Ski3-IP	97648830	98.10	94.32	51.16
FYM1-IP	95927200	98.04	94.86	54.02
FYM2-IP	85645472	98.27	95.25	54.14
FYM3-IP	90783892	98.20	95.12	54.03
Ski1-input	80427926	97.95	93.96	50.25
Ski2-input	95144464	97.87	93.80	50.85
Ski3-input	76040226	98.04	94.10	50.62
FYM1-input	65633142	97.84	93.63	53.23
FYM2-input	65627376	97.67	93.33	53.24
FYM3-input	87067342	97.94	93.96	54.11

Supplement Table S2. Summary of reads mapping to the rabbit reference genome

Sample	Valid reads	Mapped reads	Unique mapped reads	Multi mapped reads
Ski1-IP	84433594	77035455(91.24%)	57799897(68.46%)	19235558(22.78%)
Ski2-IP	69573620	63058511(90.64%)	48206148(69.29%)	14852363(21.35%)
Ski3-IP	95145912	87122746(91.57%)	66412571(69.80%)	20710175(21.77%)
FYM1-IP	44435680	29582015(66.57%)	27843777(62.66%)	1738238(3.91%)
FYM2-IP	40231350	26614523(66.15%)	25121280(62.44%)	1493243(3.71%)
FYM3-IP	41674194	27607810(66.25%)	25964269(62.30%)	1643541(3.94%)
Ski1-input	78927016	73396127(92.99%)	53160162(67.35%)	20235965(25.64%)
Ski2-input	93057700	86119450(92.54%)	62593892(67.26%)	23525558(25.28%)
Ski3-input	74385726	69170798(92.99%)	50984231(68.54%)	18186567(24.45%)
FYM1-input	65037230	49538616(76.17%)	47339413(72.79%)	2199203(3.38%)
FYM2-input	64467766	48916621(75.88%)	46809471(72.61%)	2107150(3.27%)
FYM3-input	86073096	64785290(75.27%)	61697031(71.68%)	3088259(3.59%)





Supplement Figure S1.The abundance of m⁶A in the Rex rabbit and Hycole rabbit skin (A) M⁶A methylated peaks of CD200 mRNA; (B) M⁶A methylated peaks of LGR4 mRNA; (C) M⁶A methylated peaks of SOX9 mRNA; (D) M⁶A methylated peaks of CD34 mRNA; (E) M⁶A methylated peaks of FGFR2 mRNA; (F) M⁶A methylated peaks of LEF1 mRNA; (H) M⁶A methylated peaks of TRPV3 mRNA; (I) M⁶A methylated peaks of WNT2 mRNA; (J) M⁶A methylated peaks of BMP4 mRNA; (K) M⁶A methylated peaks of FGF5 mRNA; (L) M⁶A methylated peaks of EDAR mRNA; (M) M⁶A methylated peaks of LIPH mRNA; (N) M⁶A methylated peaks of MSX2 mRNA; (O) M⁶A methylated peaks of IGF1 mRNA; (P) M⁶A

methyated peaks of ETS1 mRNA; (Q) M⁶A methyated peaks of EGFR mRNA; (R) M⁶A methyated peaks of HOXC13 mRNA; (S) M⁶A methyated peaks of WNT5A mRNA; (T) M⁶A methyated peaks of RUNX2 mRNA; (U) M⁶A methyated peaks of WNT10B mRNA.