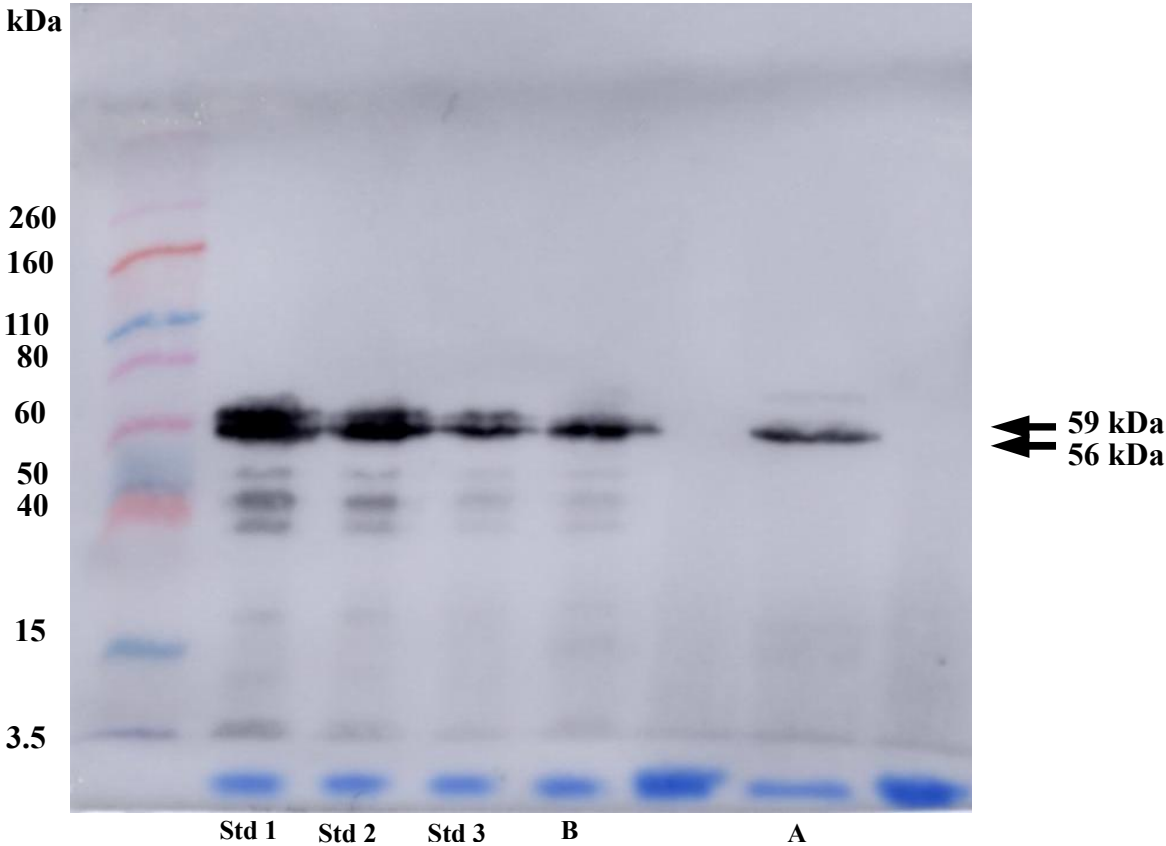


**Changes occurring on the activity of salivary alpha-amylase proteoforms in two naturalistic situations using a spectrophotometric assay.** María D. Contreras-Aguilar, Sandra V. Mateo, Fernando Tecles, Christophe Hirtz, Damián Escribano, Jose J. Cerón.

**Psychological stress model**



**Physical stress model**

