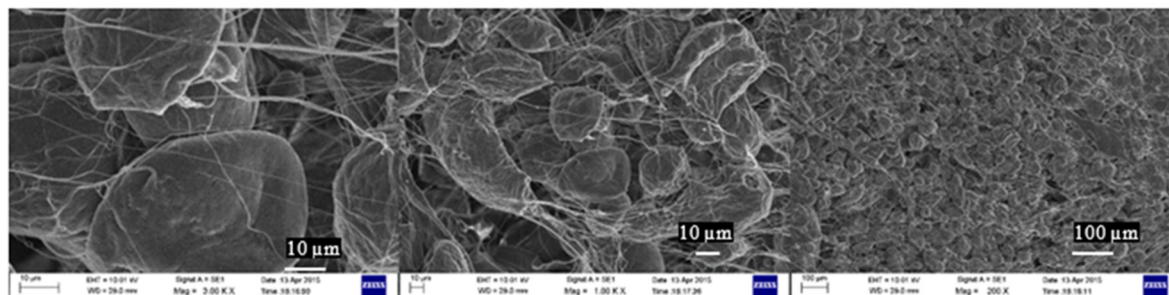
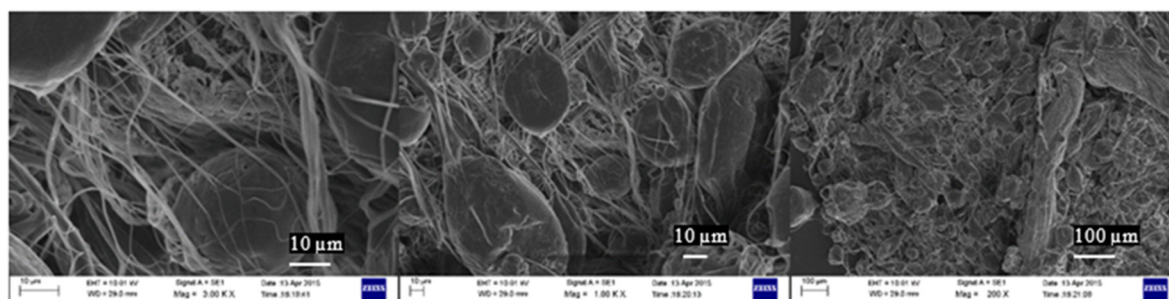


Supplementary Information

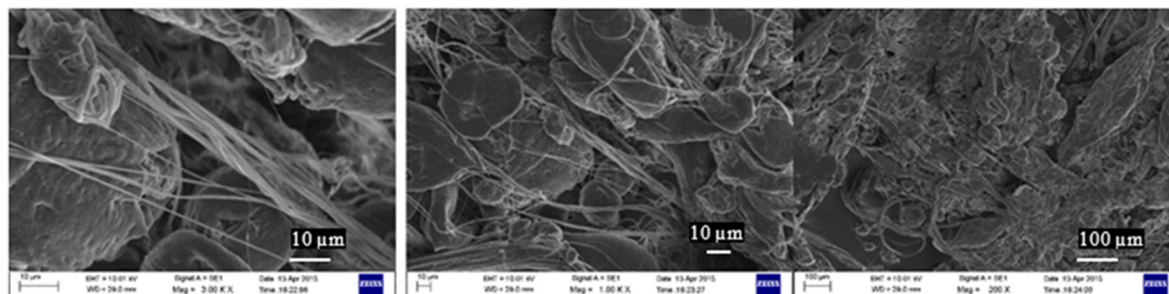
3000 rpm



4000 rpm



5000 rpm



6000 rpm

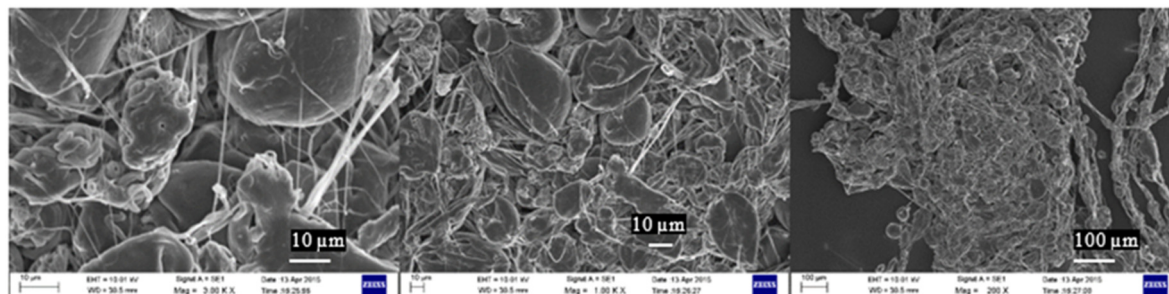
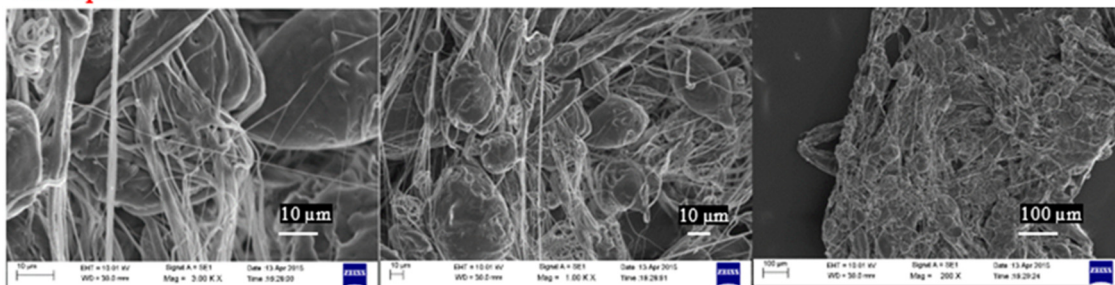
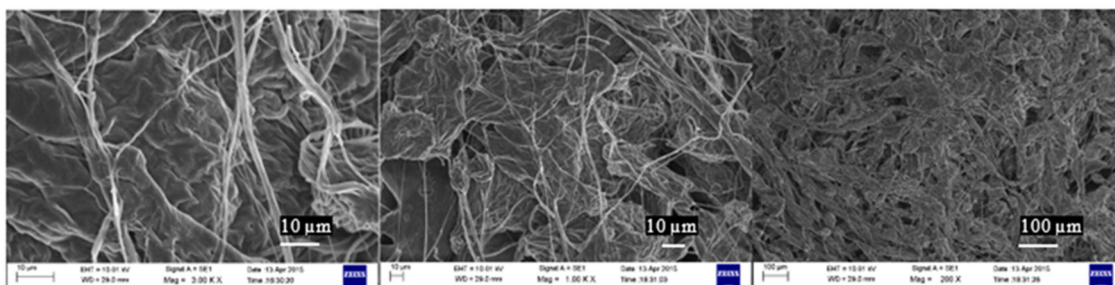


Figure S1. Cont.

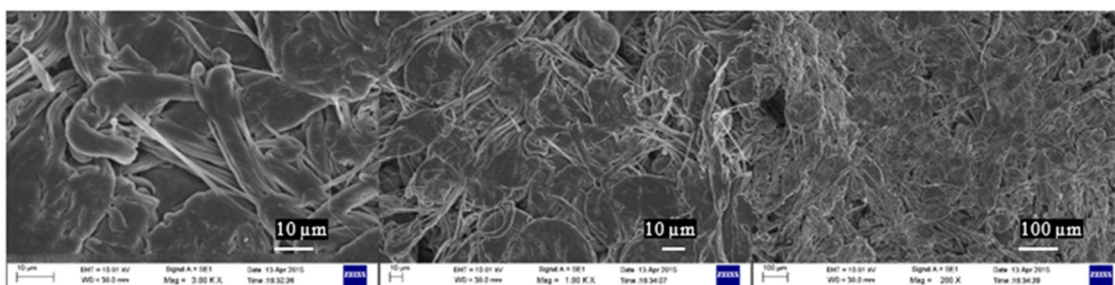
7000 rpm



8000 rpm



9000 rpm



10000 rpm

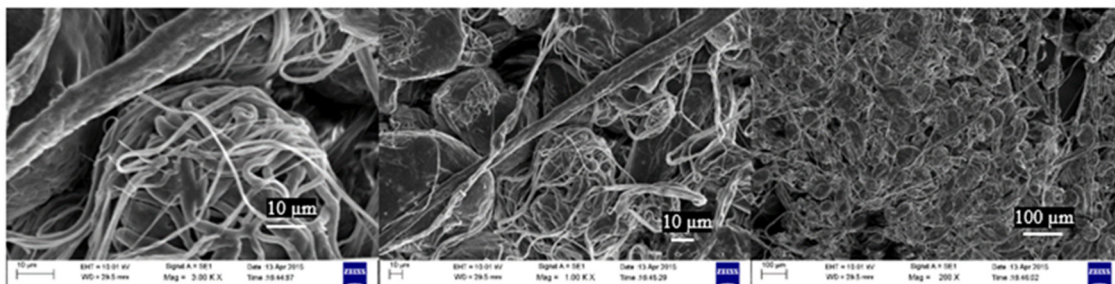


Figure S1. SEM images show the fiber formed at 7.5 wt% of PCL concentrations with the solvent mixture ratio of 50:50 (DMF:THF) at different rotational speeds.

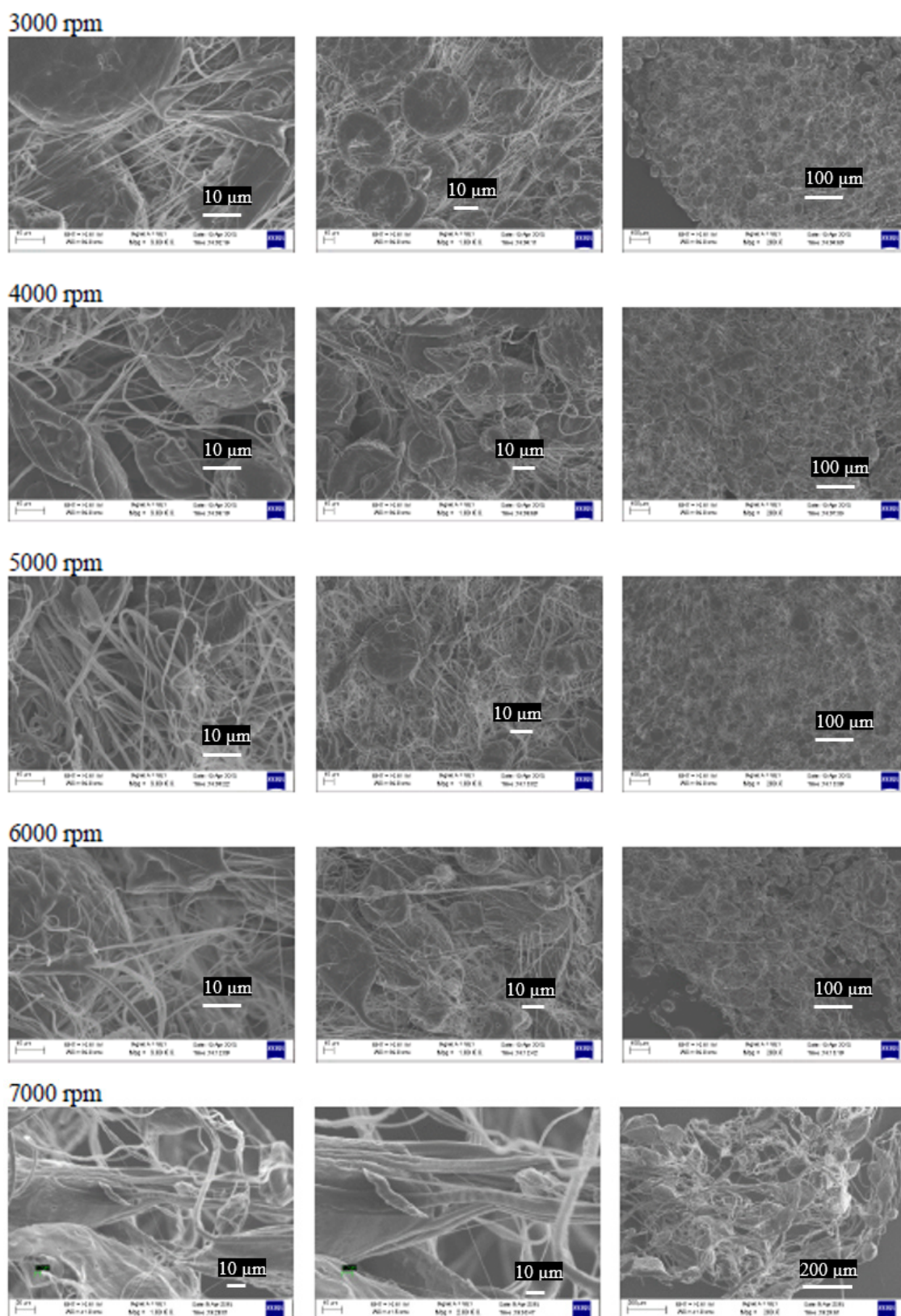


Figure S2. Cont.

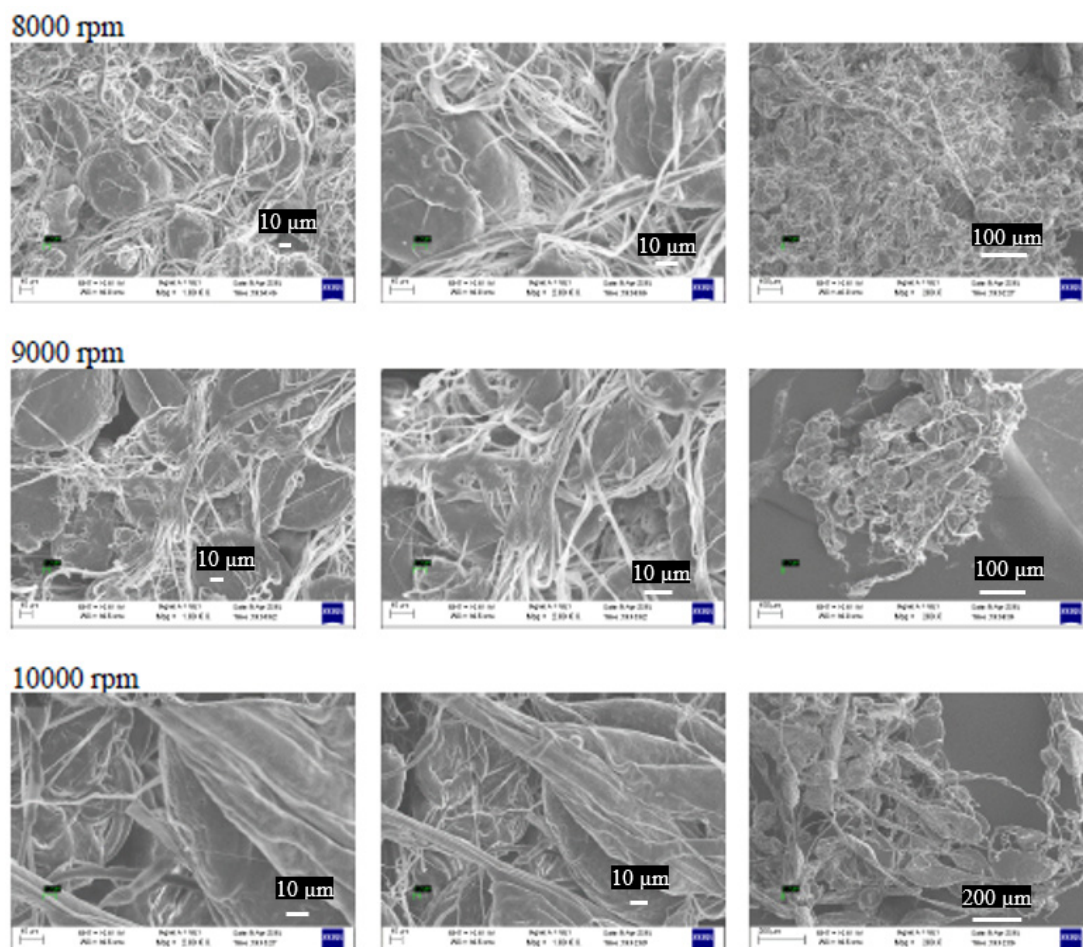


Figure S2. SEM images of fibers formed at 10 wt% of PCL concentrations with the solvent mixture ratio of 50:50 (DMF:THF) at different rotational speeds.

Table S1. The effect of polymer concentration and rotational speed in fiber formation in 50:50 solvent ratio of DMF:THF.

	1000 rpm	2000 rpm	3000 rpm	4000 rpm	5000 rpm	6000 rpm	7000 rpm	8000 rpm	9000 rpm	10000 rpm
PCL 7.5 wt%	No Fibers	No Fibers	Beads Some Fibers	Beads Some Fibers	Beads Some Fibers	Beads Some Fibers	Beads Some Fibers	Beads Some Fibers	Beads Some Fibers	Beads Some Fibers
PCL 10 wt%	No Fibers	No Fibers	Beads Some Fibers	Beads Some Fibers	Beads Some Fibers	Beads Some Fibers	Beads Some Fibers	Beads Some Fibers	Beads Some Fibers	Beads Some Fibers
PCL 12.5 wt%	No Fibers	No Fibers	Beads Some Fibers	Beads Some Fibers	Beads Some Fibers	Beads Some Fibers	Beads Some Fibers	Beads Some Fibers	Beads Some Fibers	Beads Some Fibers
PCL 15 wt%	Some Fibers	No Fibers	No Fibers	No Fibers	No Fibers	Beads Some Fibers	Beads Some Fibers	Beads Some Fibers	Beads Some Fibers	Beads Some Fibers
PCL 17.5 wt%	No Fibers	No Fibers	No Fibers	No Fibers	Beads Some Fibers	No Fibers	Beads Some Fibers	No Fibers	Beads Some Fibers	Beads Some Fibers

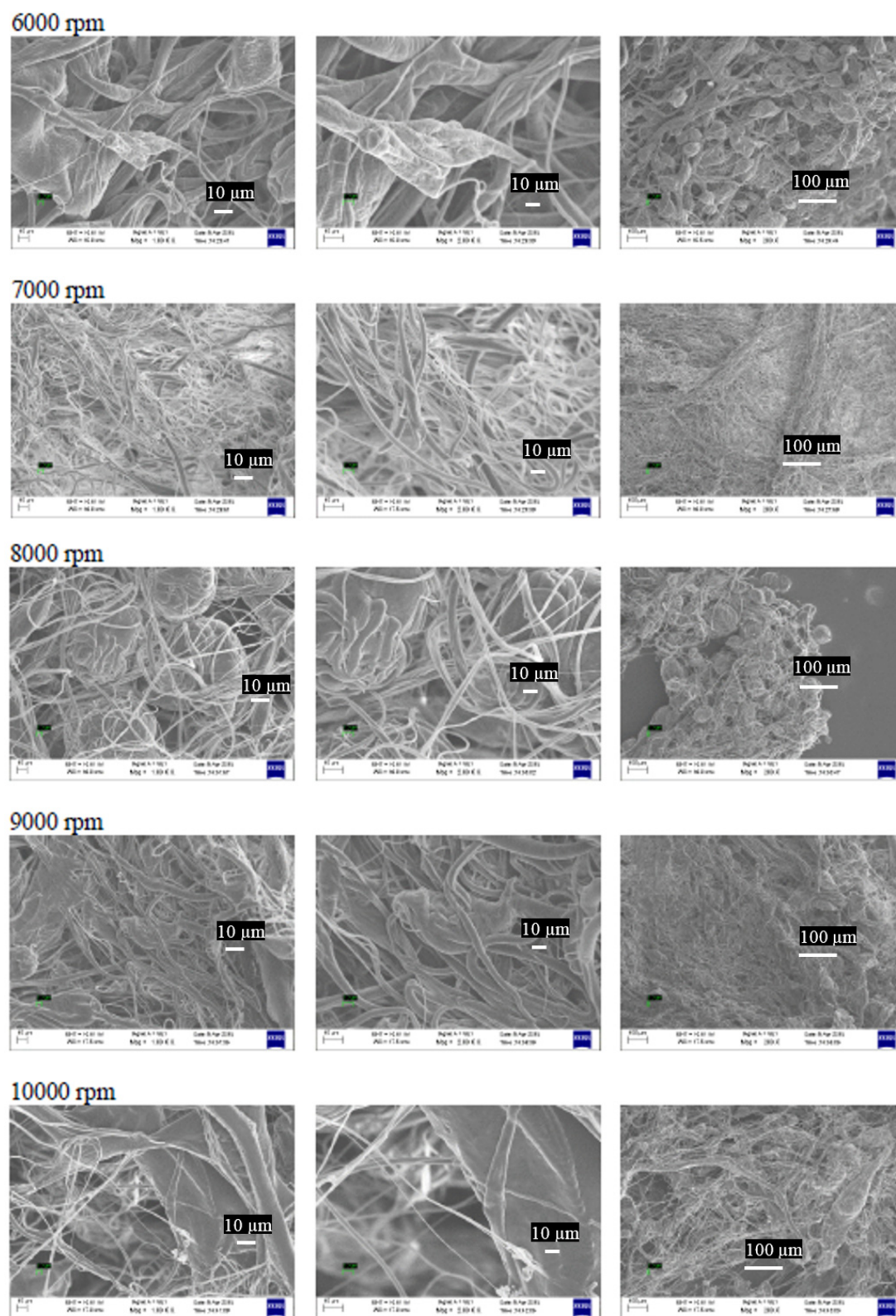


Figure S3. SEM images fiber formed at 15 wt% PCL concentrations with the solvent mixture ratio of 50:50 (DMF:THF) at different rotational speeds.

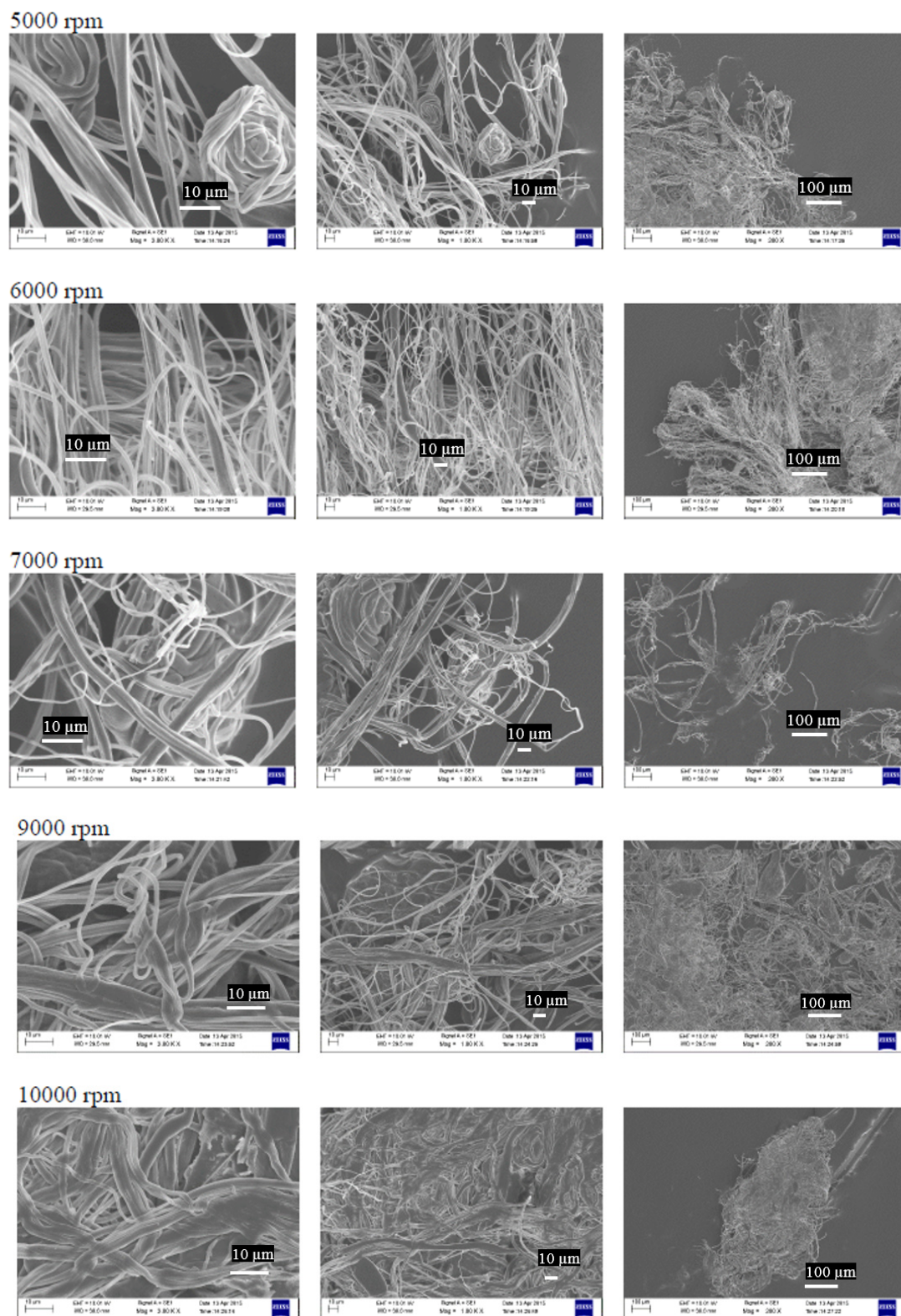
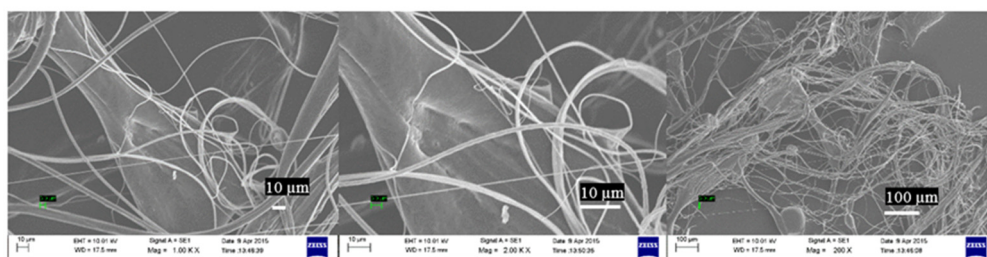
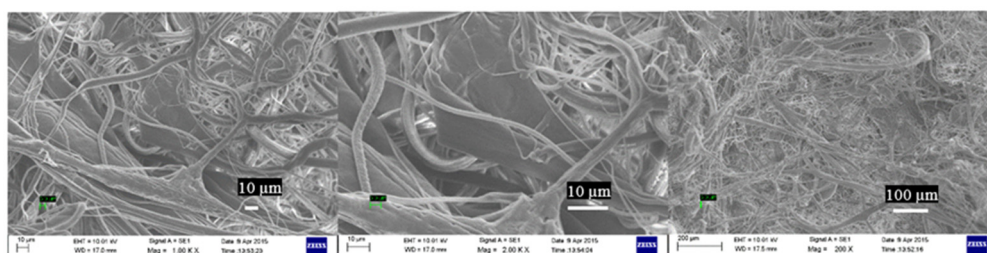


Figure S4. SEM images of fibers formed at 17.5 wt% of PCL concentrations with the solvent mixture ratio of 50:50 (DMF:THF) at different rotational speeds.

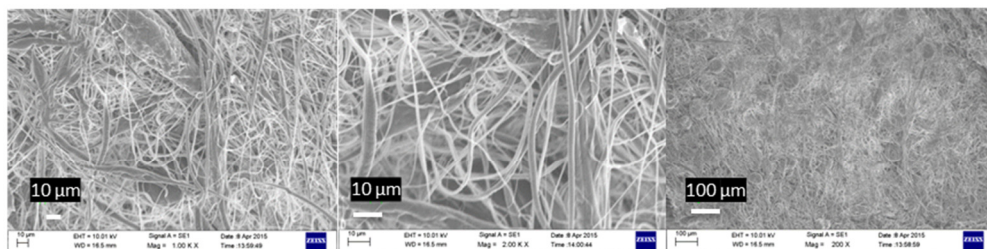
3000 rpm



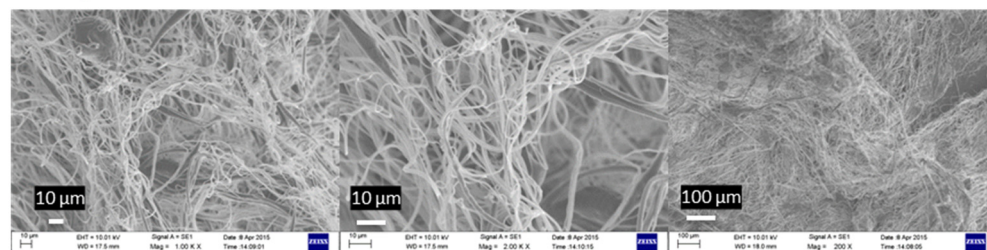
4000 rpm



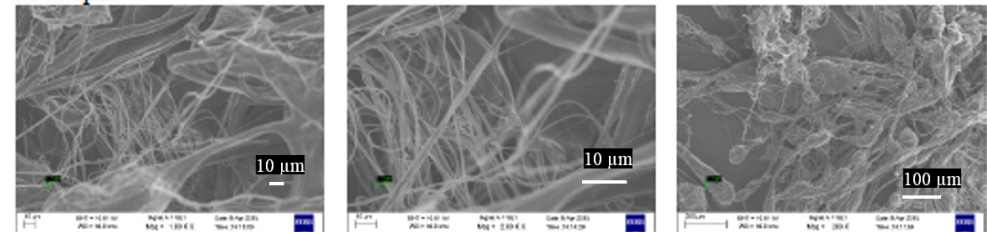
6000 rpm



8000 rpm



9000 rpm



10000 rpm

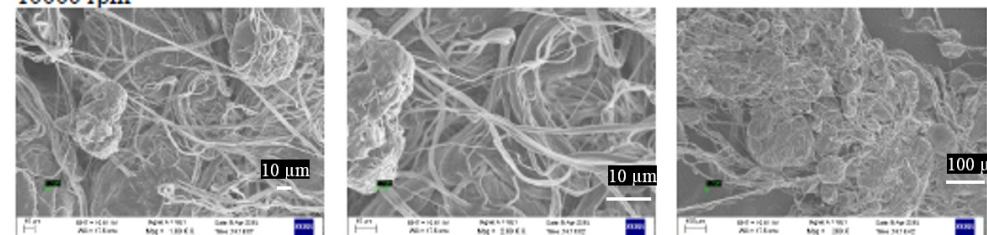


Figure S5. SEM images of fibers formed at 12.5 wt% of PCL concentrations with the solvent mixture ratio of 50:50 (DMF:THF) at different rotational speeds.

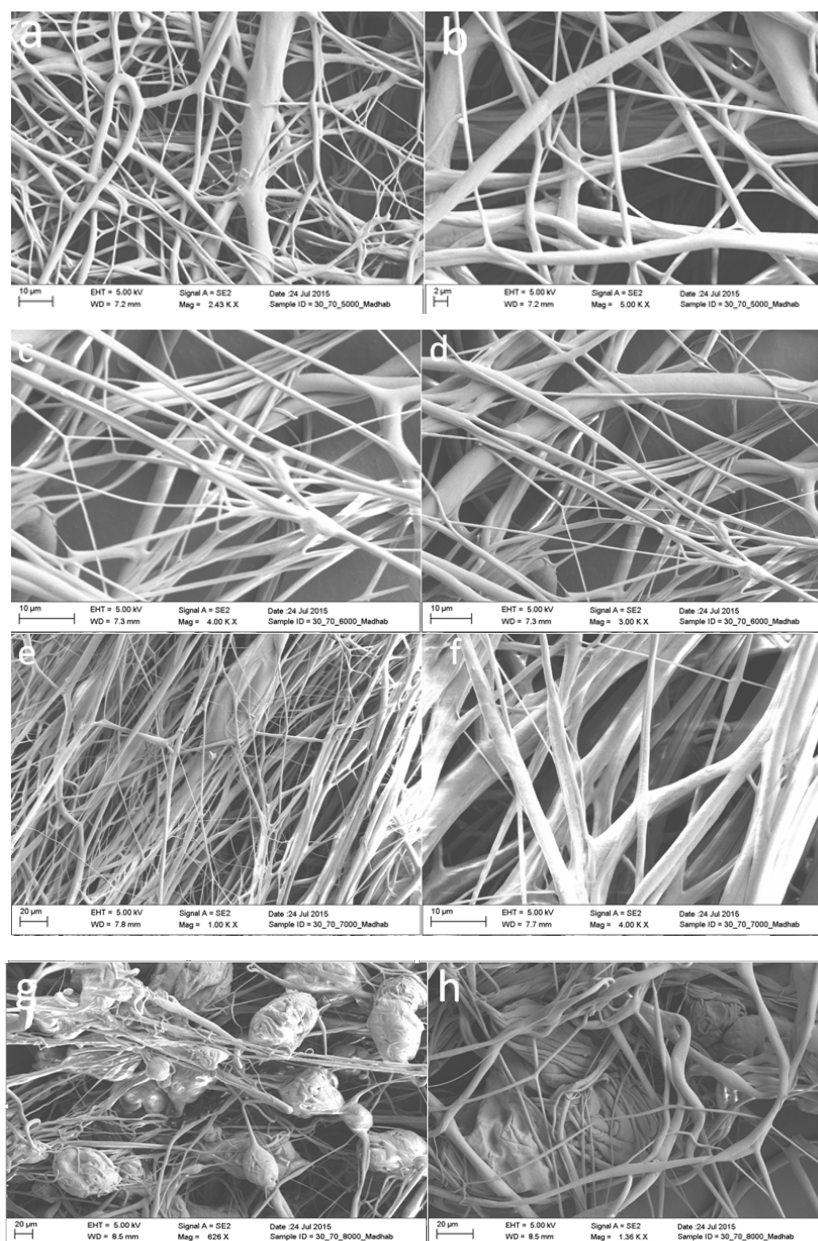


Figure S6. SEM images of PCL fibers at solvent 30:70 of DMF:THF at rotational speeds; (a,b) 5000 rpm, (c,d) 6000 rpm; (e,f) 7000rpm; (g,h) 8000 rpm.

Table S2. A summary for the fiber formation at different PCL solution concentrations and rotational speeds.

	5000 rpm	6000 rpm	7000 rpm	8000 rpm
PCL 12.5 wt% (40:60 DMF:THF)	Fibers	Fibers	Fibers	Fibers
PCL 12.5 wt% (30:70 DMF:THF)	Fibers	Fibers	Fibers	Beads Some Fibers
PCL 12.5 wt% (THF)	Fibers	Fibers	Fibers	Fibers

