

Supplementary Information

Fully Reversible Electrically Induced Photochromic-Like Behaviour of Ag:TiO₂ Thin Films

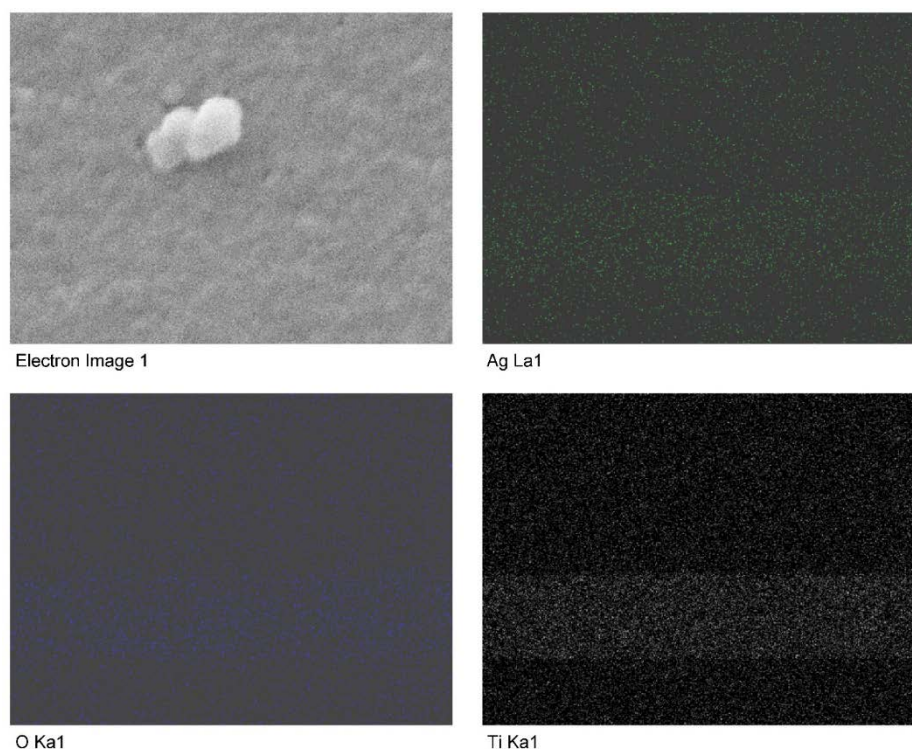


Figure S1. surface EDS mapping.



© 2019 by the authors. Submitted for possible open access publication under the terms and conditions of the Creative Commons Attribution (CC BY) license (<http://creativecommons.org/licenses/by/4.0/>).