

Supplementary Material

a

Consensus

NDM-1 NG 049326.1
NDM-2 NG 049334.1
NDM-3 NG 049335.1
NDM-4 NG 049336.1
NDM-5 NG 049337.1
NDM-6 NG 049338.1
NDM-7 NG 049339.1
NDM-8 NG 049340.1
NDM-9 NG 049341.1
NDM-10 NG 049327.
NDM-11 NG. 049328.
NDM-12 NG. 049330.
NDM-13 NG. 049331.
NDM-14 NG. 049331.
NDM-15 NG. 049332.
NDM-16a 049333.1
NDM-16b 047726.1
NDM-17 NG 052662.
NDM-18 NG 052866.
NDM-19 NG 054598.
NDM-20 NG 057455.
NDM-21 NG 055664.
NDM-22 NG 057612.
NDM-23 NG 060570.
NDM-24 NG 060571.
NDM-25 NG 066711.
NDM-26 NG 067144.
NDM-27 NG 062358.
NDM-28 NG 064729.
NDM-29 NG 067145.
NDM-30 NG 071206.
NDM-31 NG 071207.

[illegible]

b

Consensus

NDM-1 NC_049326.1
NDM-2 NC_049334.1
NDM-3 NC_049335.1
NDM-4 NC_049336.1
NDM-5 NC_049337.1
NDM-6 NC_049338.1
NDM-7 NC_049339.1
NDM-8 NC_049340.1
NDM-9 NC_049341.1
NDM-10 NC_049327.1
NDM-11 NC_049328.1
NDM-12 NC_049329.1
NDM-13 NC_049330.1
NDM-14 NC_049331.1
NDM-15 NC_049332.1
NDM-16a NC_049333.1
NDM-16b 074726.1
NDM-17 NC_052662.1
NDM-18 NC_052866.1
NDM-19 NC_054948.1
NDM-20 NC_057565.1
NDM-22 NC_057612.1
NDM-23 NC_060570.1
NDM-24 NC_060571.1
NDM-25 NC_066711.1
NDM-26 NC_067144.1
NDM-27 NC_062358.1
NDM-28 NC_064729.1
NDM-29 NC_067145.1
NDM-30 NC_071206.1
NDM-31 NC_071207.1

[illegible]

Consensus

- NDM-1 NG_049326.1
- NDM-2 NG_049334.1
- NDM-3 NG_049335.1
- NDM-4 NG_049336.1
- NDM-5 NG_049337.1
- NDM-6 NG_049338.1
- NDM-7 NG_049339.1
- NDM-8 NG_049340.1
- NDM-9 NG_049341.1
- NDM-10 NG_049327.1
- NDM-11 NG_049328.1
- NDM-12 NG_049329.1
- NDM-13 NG_049330.1
- NDM-14 NG_049331.1
- NDM-15 NG_049332.1
- NDM-16a_049333.1
- NDM-16b_074726.1
- NDM-17 NG_052662.1
- NDM-18 NG_052866.1
- NDM-19 NG_055498.1
- NDM-20 NG_057455.1
- NDM-21 NG_055644.1
- NDM-22 NG_056512.1
- NDM-23 NG_060570.1
- NDM-24 NG_060571.1
- NDM-25 NG_061711.1
- NDM-26 NG_061744.1
- NDM-27 NG_062358.1
- NDM-28 NG_064729.1
- NDM-29 NG_067145.1
- NDM-30 NG_071206.1
- NDM-31 NG_071207.1

[illegible]

Consensus

- NDM-1 NG_049326.1
- NDM-2 NG_049334.1
- NDM-3 NG_049335.1
- NDM-4 NG_049336.1
- NDM-5 NG_049337.1
- NDM-6 NG_049338.1
- NDM-7 NG_049339.1
- NDM-8 NG_049340.1
- NDM-9 NG_049341.1
- NDM-10 NG_049327.1
- NDM-11 NG_049328.1
- NDM-12 NG_049329.1
- NDM-13 NG_049330.1
- NDM-14 NG_049331.1
- NDM-15 NG_049332.1
- NDM-16a_049333.1
- NDM-16b_074726.1
- NDM-17 NG_052662.1
- NDM-18 NG_052866.1
- NDM-19 NG_054981.1
- NDM-20 NG_057455.1
- NDM-21 NG_055644.1
- NDM-22 NG_056172.1
- NDM-23 NG_060570.1
- NDM-24 NG_060571.1
- NDM-25 NG_060571.1
- NDM-26 NG_067144.1
- NDM-27 NG_062358.1
- NDM-28 NG_064729.1
- NDM-29 NG_067145.1
- NDM-30 NG_071206.1
- NDM-31 NG_071207.1

[illegible]

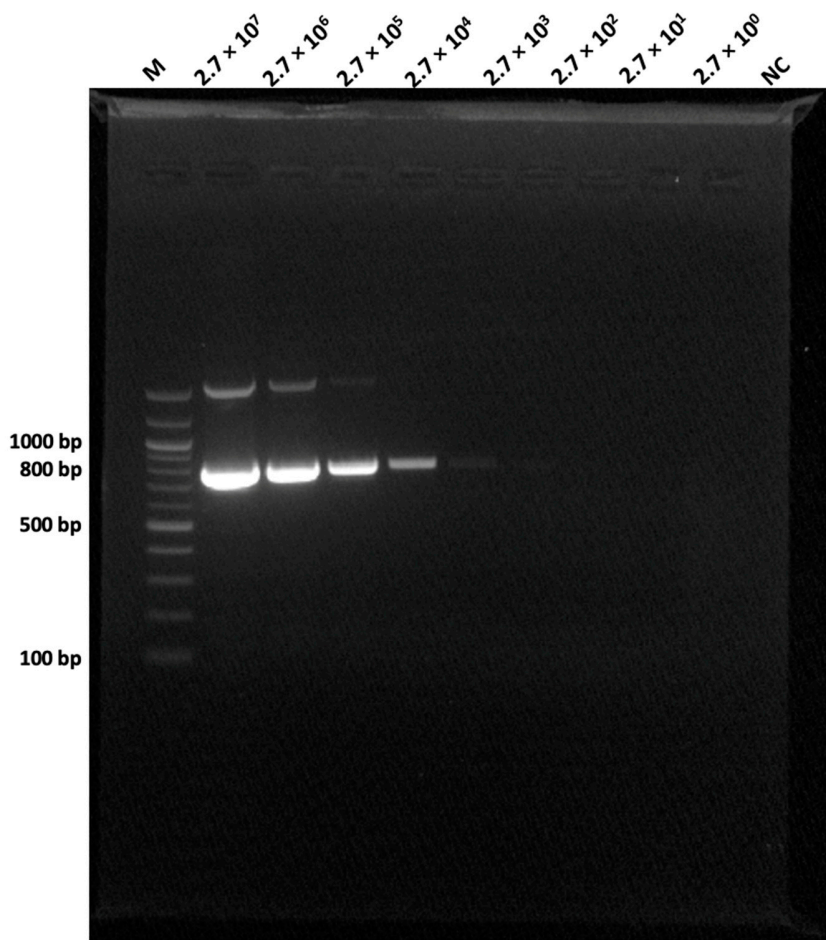


Figure S2. Original gel-electrophoresis image of amplified blandM-targeted gene. Lane M: 100 bp ladder; Lanes 1-9: ATCC BAA 2471 2.7×10^7 to 2.7×10^0 CFU/mL, NC. In this case, NC refers to replacing bacterial-genome extract with nuclease-free water