

# Heterostructures Based on Cobalt Phthalocyanine Films Decorated with Gold Nanoparticles for the Detection of Low Concentrations of Ammonia and Nitric Oxide

Svetlana I. Dorovskikh <sup>1</sup>, Darya D. Klyamer <sup>1</sup>, Eugeny A. Maksimovskiy <sup>1</sup>, Victoria V. Volchek <sup>1</sup>, Sergey M. Zharkov <sup>2,3</sup>, Natalia B. Morozova <sup>1</sup> and Tamara V. Basova <sup>1,\*</sup>

<sup>1</sup> Nikolaev Institute of Inorganic Chemistry SB RAS, 3 Lavrentiev Pr., Novosibirsk 630090, Russia; re-ter16@yandex.ru (S.I.D.); klyamer@niic.nsc.ru (D.D.K.); eugene@niic.nsc.ru (E.A.M.); volchek@niic.nsc.ru (V.V.V.); mor@niic.nsc.ru (N.B.M.)

<sup>2</sup> Kirensky Institute of Physics, Federal Research Center KSC SB RAS, Krasnoyarsk 660036, Russia; zhar-kov@iph.krasn.ru

<sup>3</sup> Siberian Federal University, Laboratory of electron microscopy, Krasnoyarsk 660041, Russia

\* Correspondence: basova@niic.nsc.ru

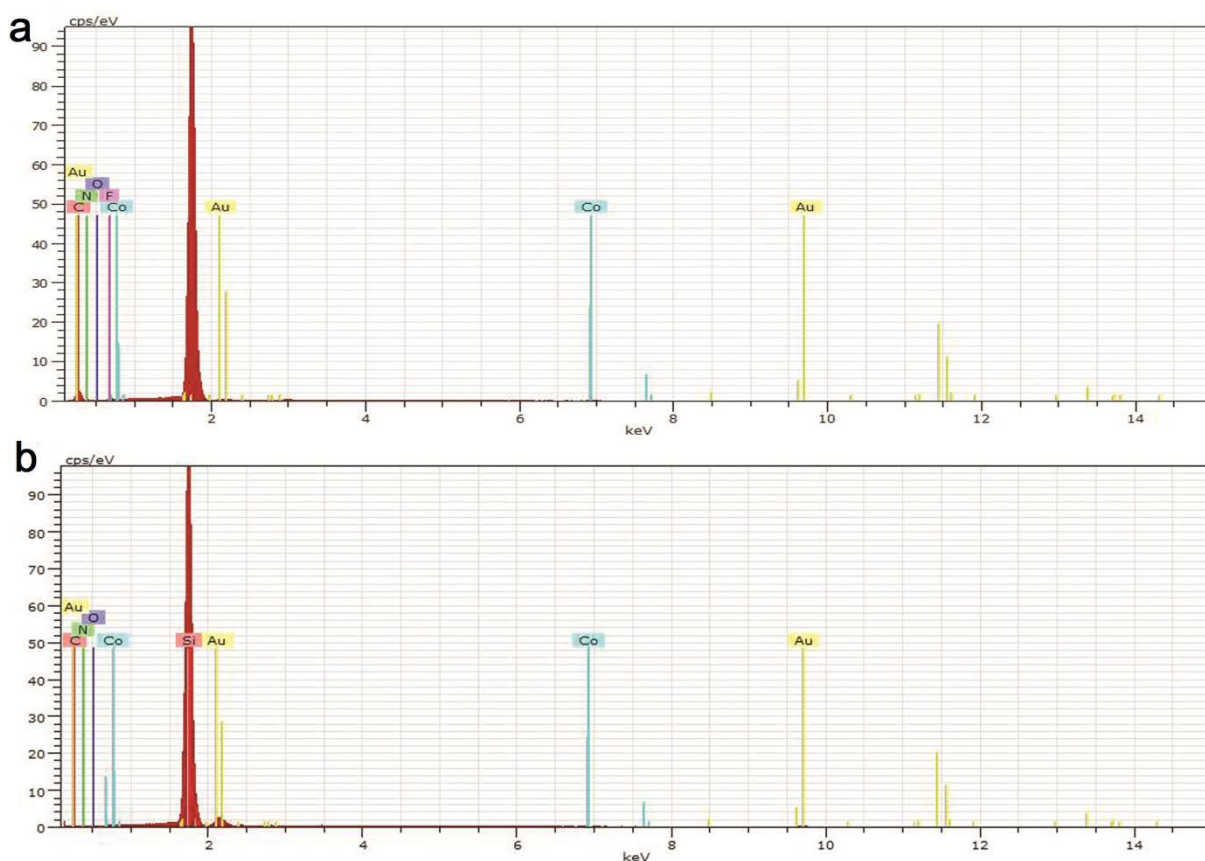
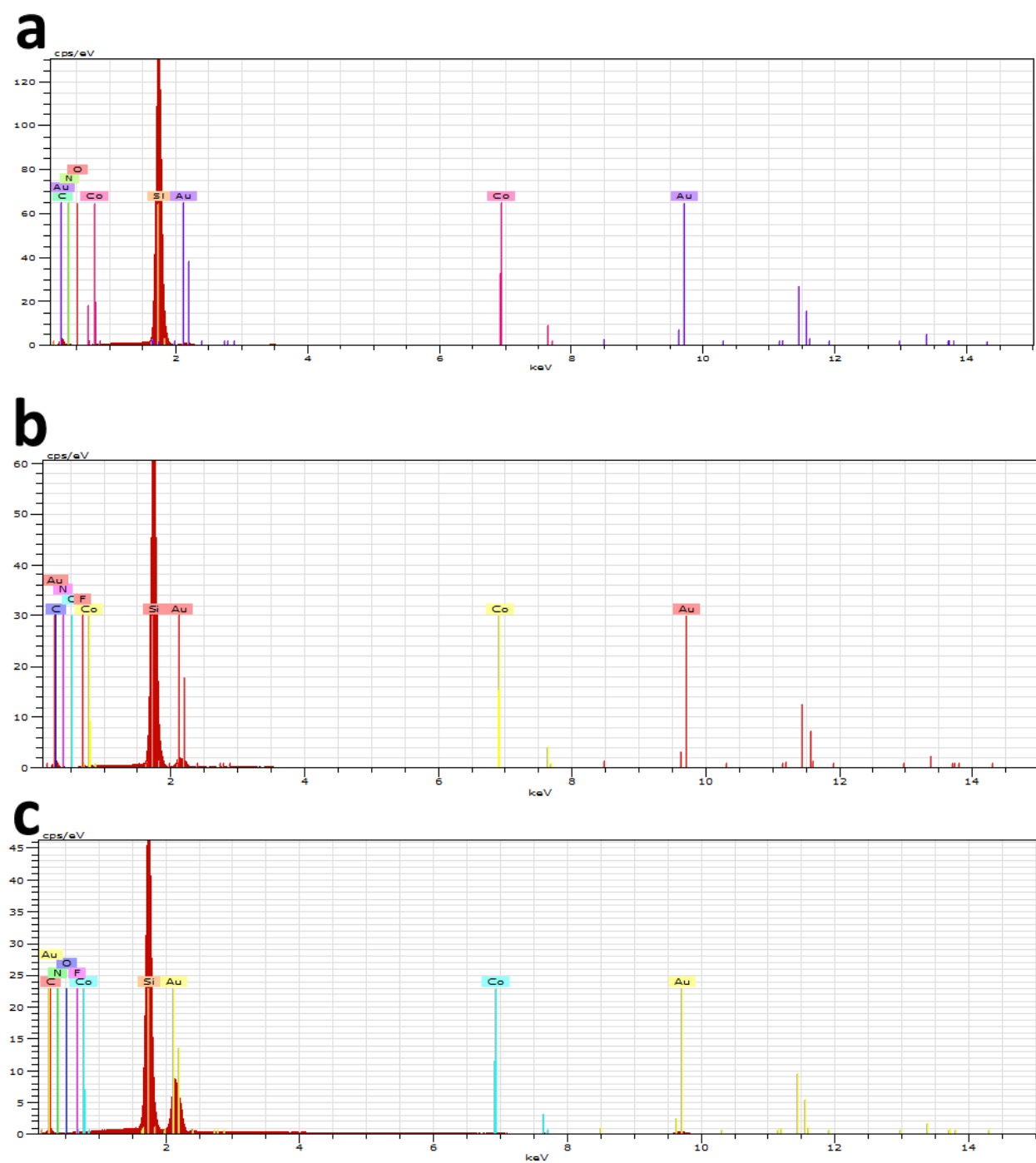
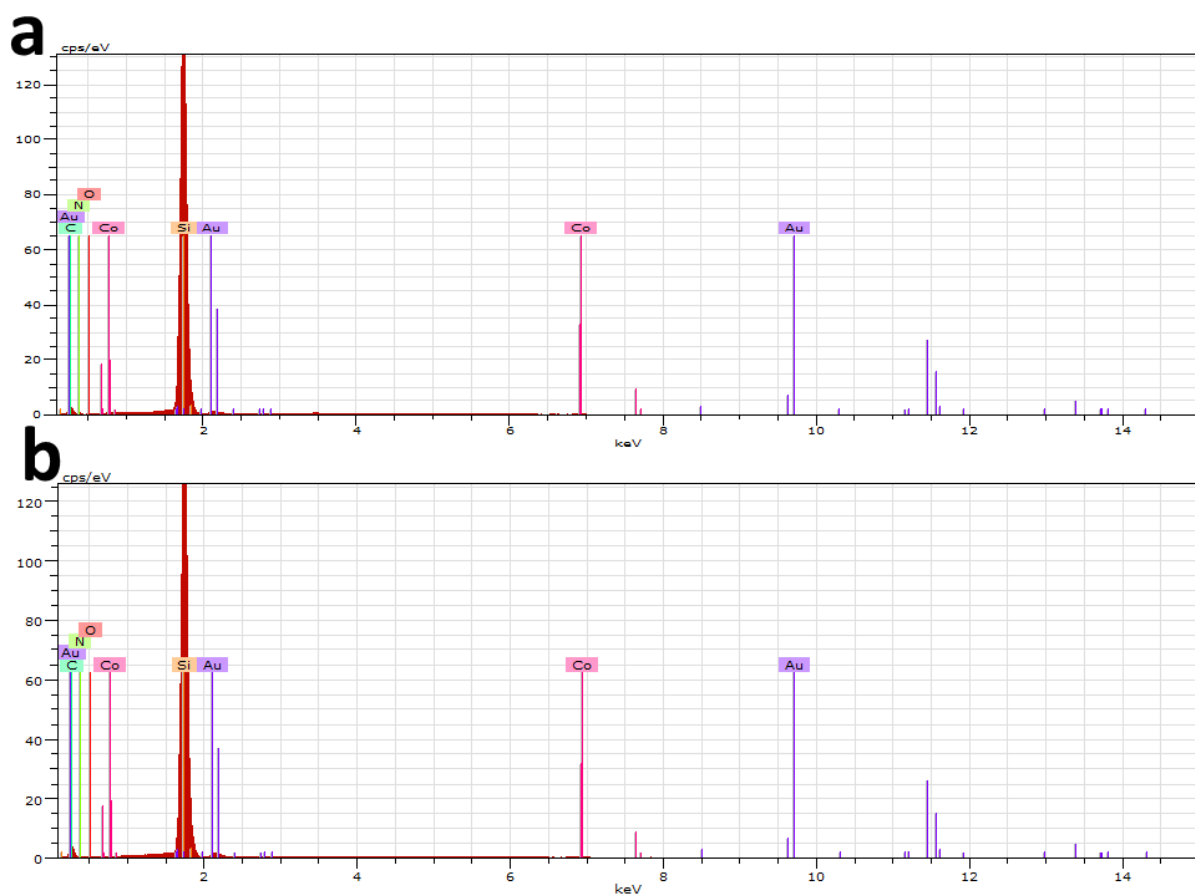


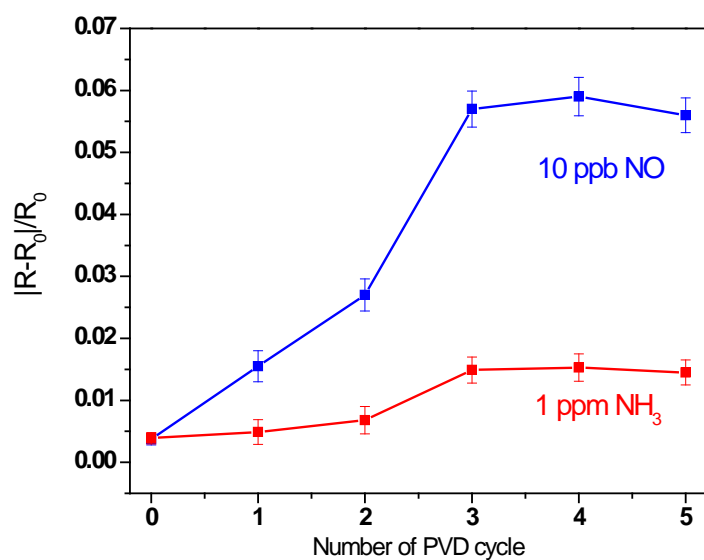
Figure S1. EDX spectra of Au\_CVD2/CoPc (a) and Au\_CVD3/CoPc (b).



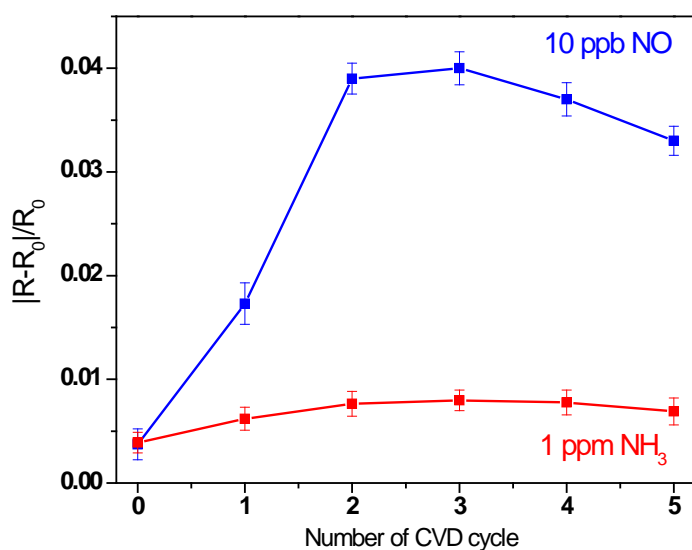
**Figure S2.** EDX spectra of Au\_PVD1/CoPc (a), Au\_PVD2/CoPc (b), and Au\_PVD3/CoPc (c).



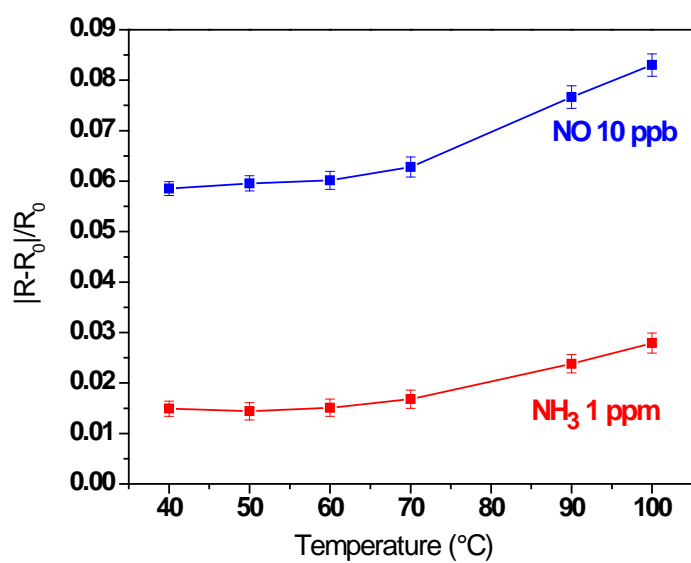
**Figure S3.** EDX spectra of Au\_DC2/CoPc (a) and Au\_DC3/CoPc (b).



**Figure S4.** Dependence of the sensor response of heterostructures, in which Au nanoparticles were deposited by a PVD technique, on the number of PVD cycles.



**Figure S5.** Dependence of the sensor response of heterostructures, in which Au nanoparticles were deposited by a CVD technique, on the number of CVD cycles.



**Figure S6.** Dependence of the response of Au\_PVD3/CoPc sensor on temperature.