

Supporting Information

# Selective Sensing of Darolutamide and Thalidomide in Pharmaceutical Preparations and in Spiked Biofluids

Wael Talaat <sup>1,\*</sup>, Abdelbasset A. Farahat <sup>2,3,\*</sup> and Reda Mohammed Keshk <sup>4</sup>

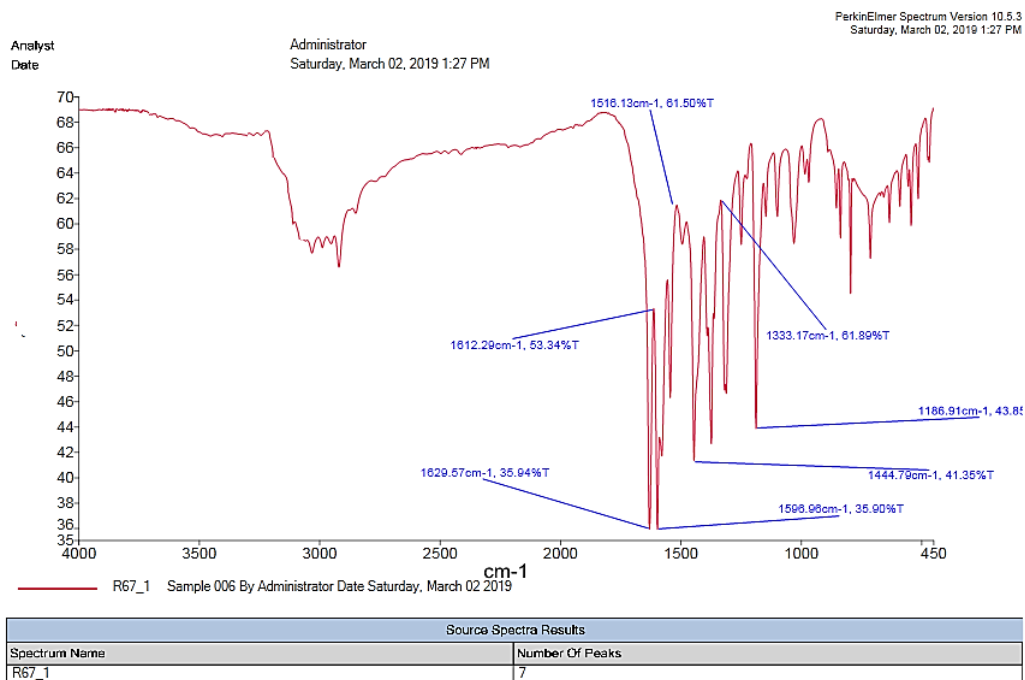
<sup>1</sup> Department of Pharmaceutical Analytical Chemistry, Faculty of Pharmacy, Damanhour University, Damanhour 22514, Egypt

<sup>2</sup> Master of Pharmaceutical Sciences Program, California Northstate University, Elk Grove, CA 95757, USA

<sup>3</sup> Department of Pharmaceutical Organic Chemistry, Faculty of Pharmacy, Mansoura University, Mansoura 35516, Egypt

<sup>4</sup> Department of Chemistry, Faculty of Science, Damanhour University, Damanhour 22511, Egypt

\* Correspondence: waeltalaat@pharm.dmu.edu.eg (W.T.); abdelbasset.farahat@cnsu.edu (A.A.F.)



**Figure S1.** IR spectra of compound 2 from method A.

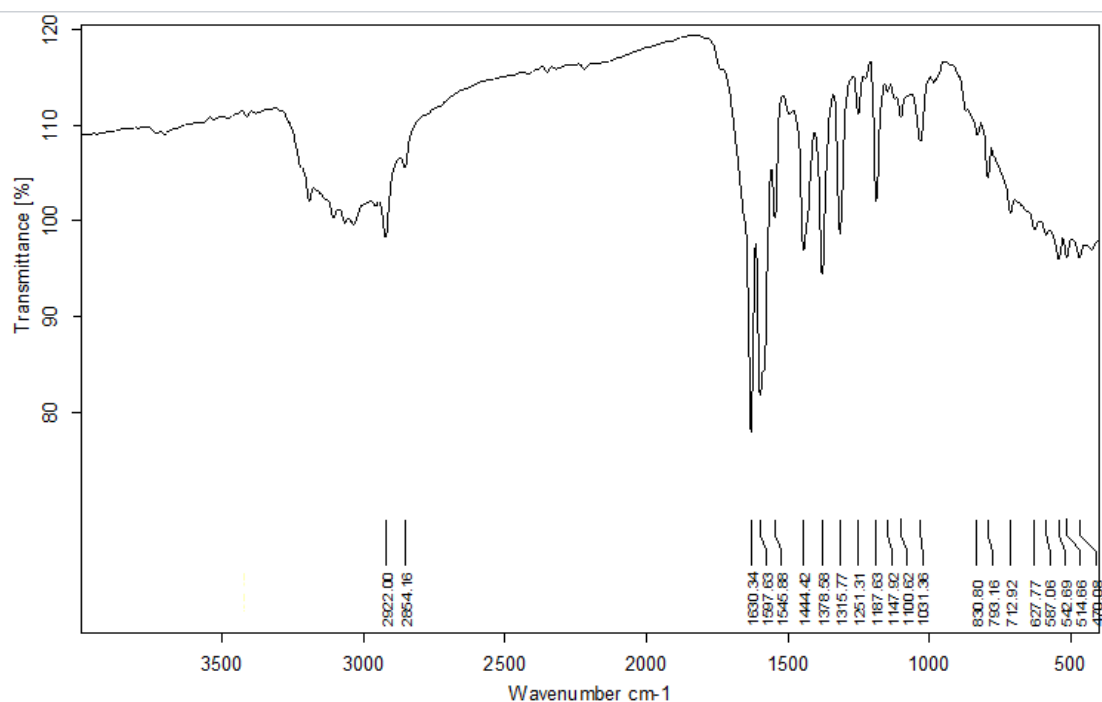


Figure S2. IR spectra of compound 2 from method B.

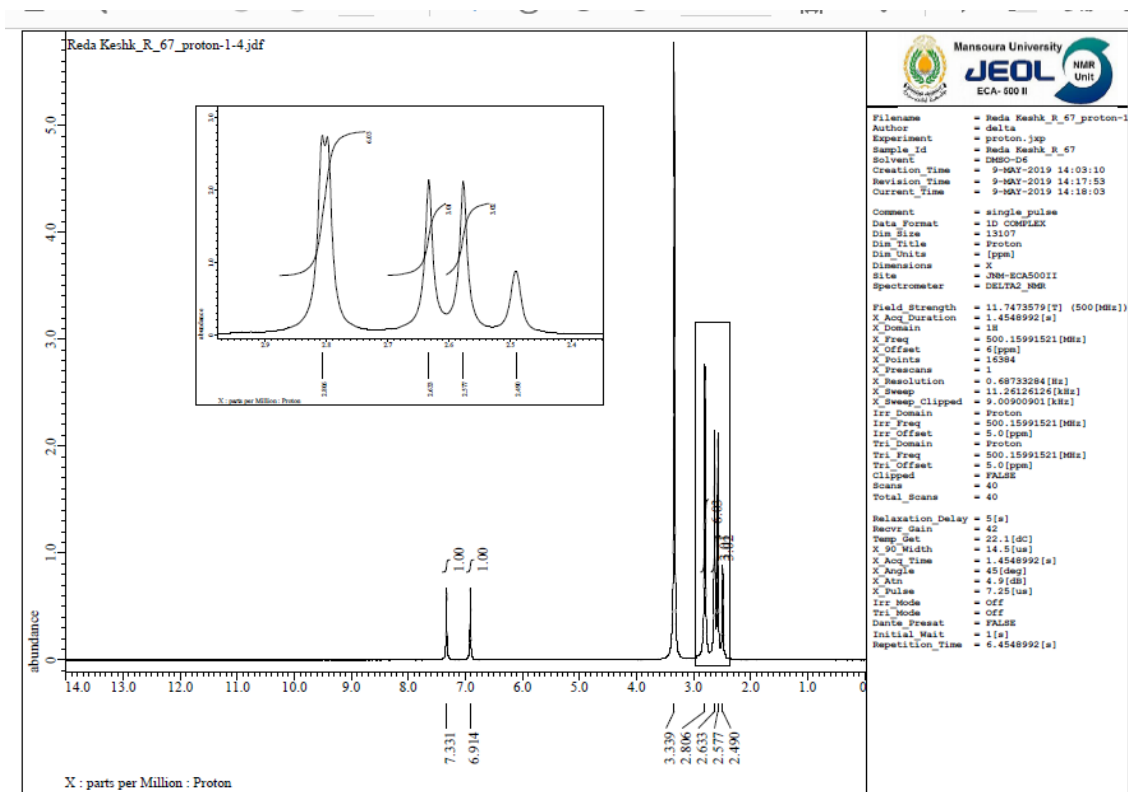


Figure S3.  $^1\text{H}$  NMR spectra of compound 2 from method A.

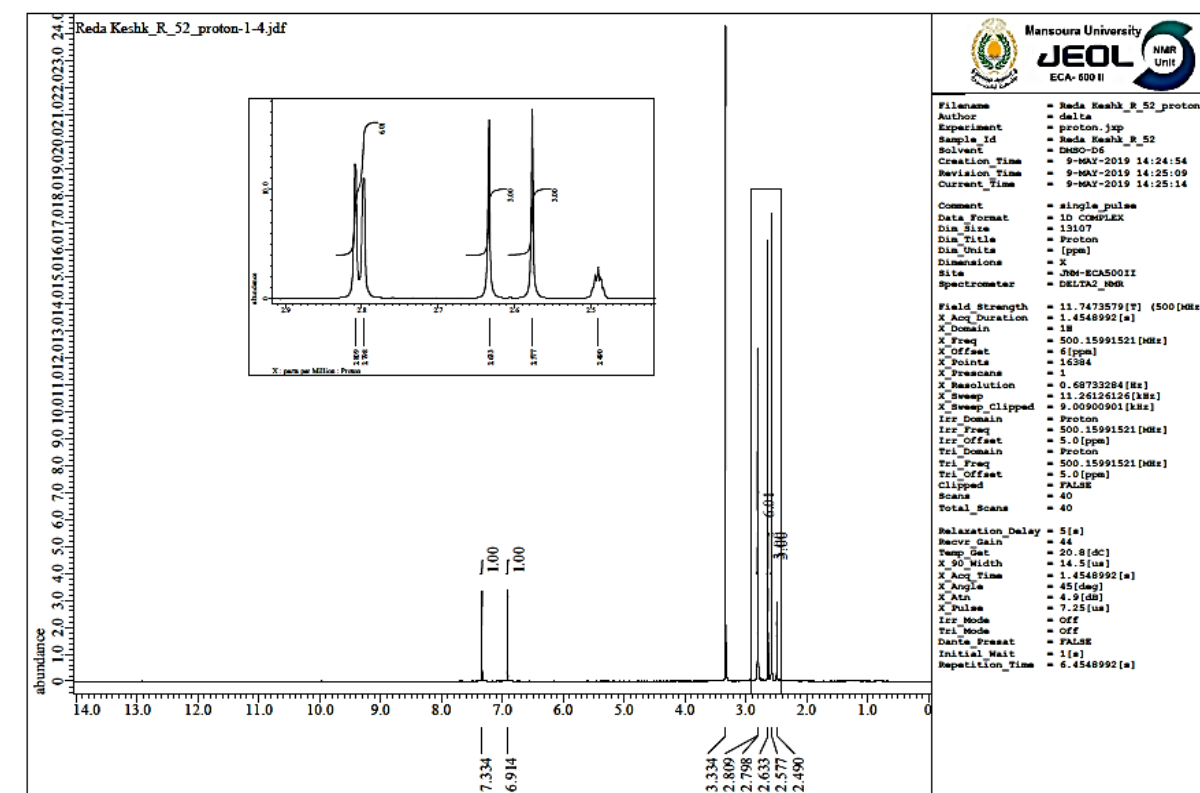


Figure S4.  $^1\text{H}$  NMR spectra of compound 2 from method B.

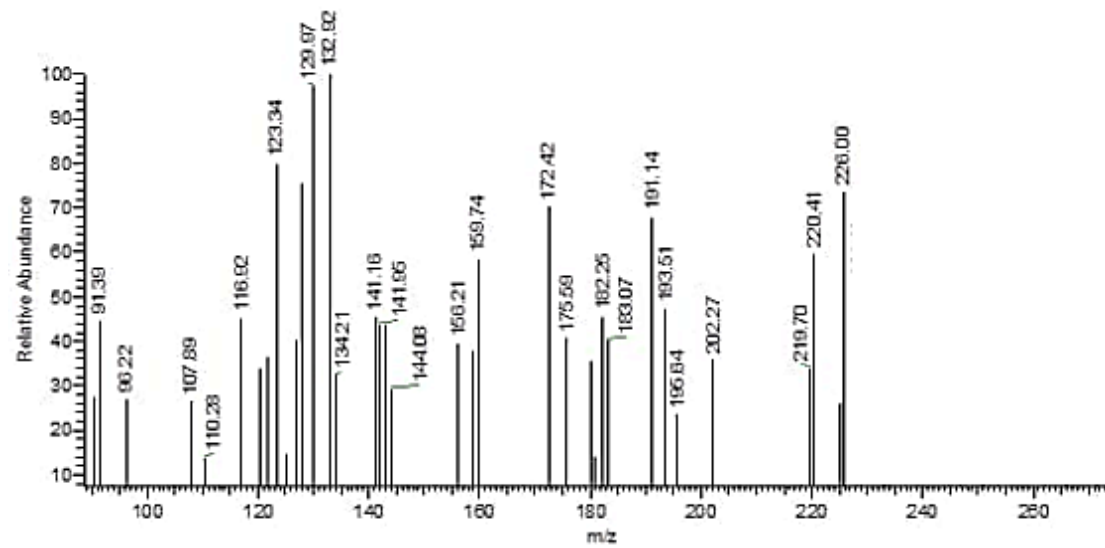
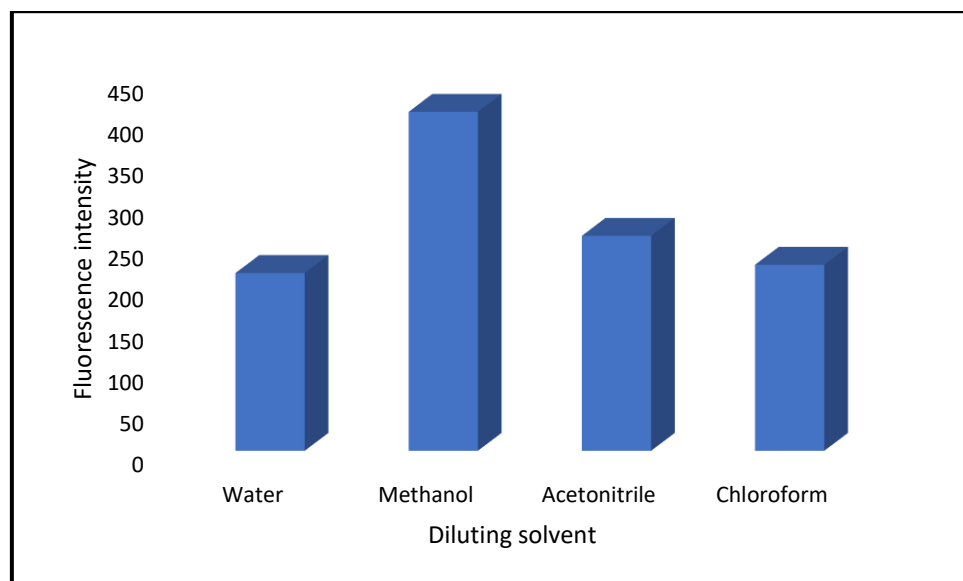
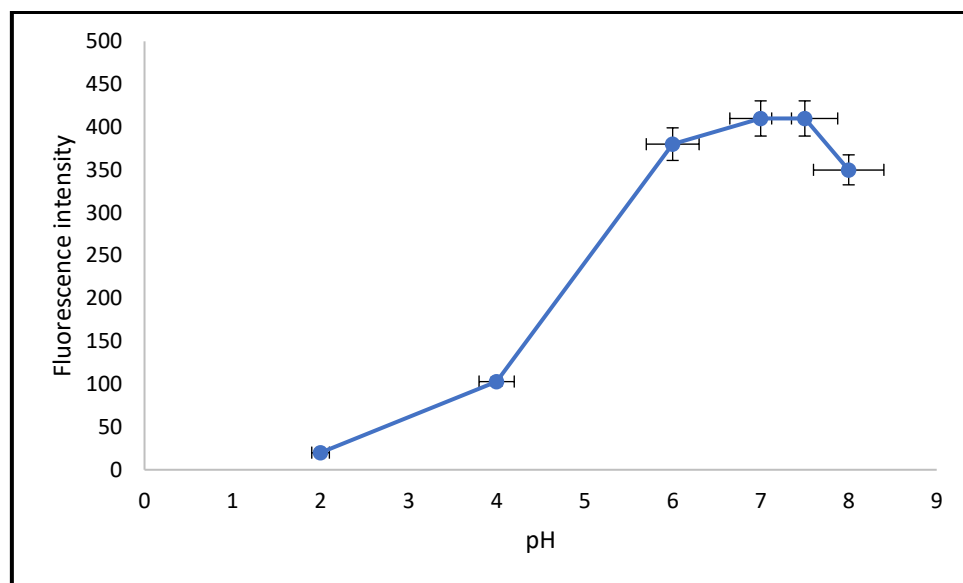


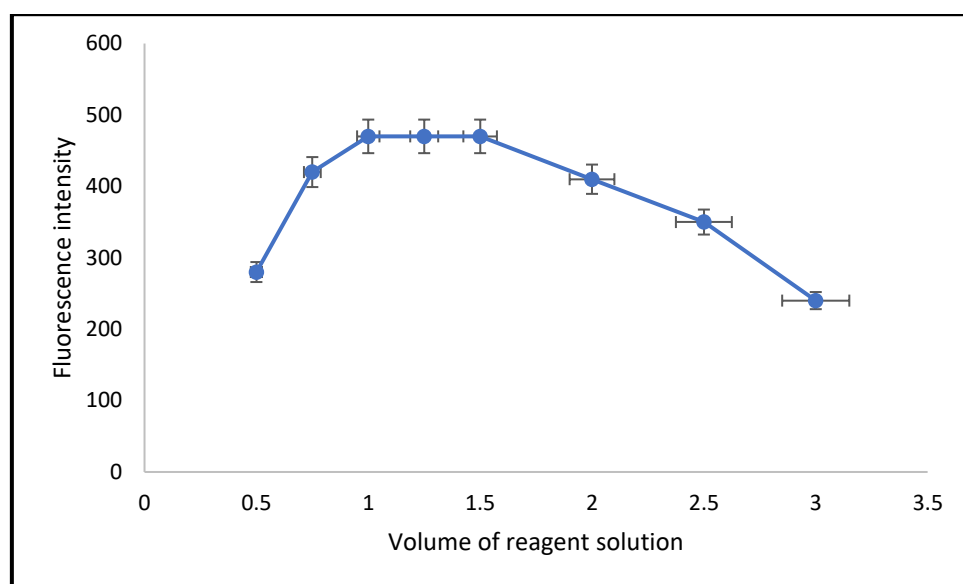
Figure S5. Mass spectrum of compound 2.



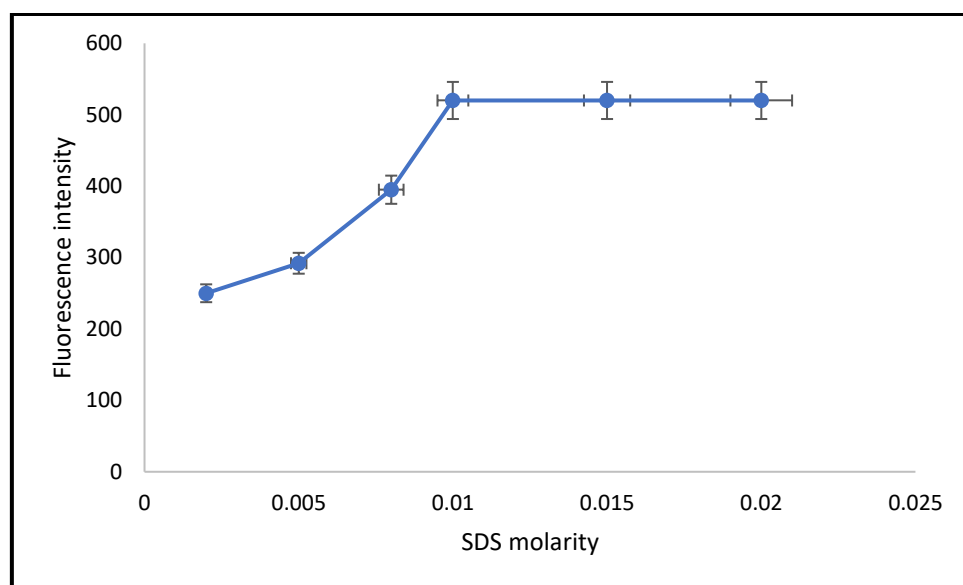
**Figure S6.** The effect of different diluting solvents on the fluorescence intensity of pyridopyrazolopyrimidine 2.



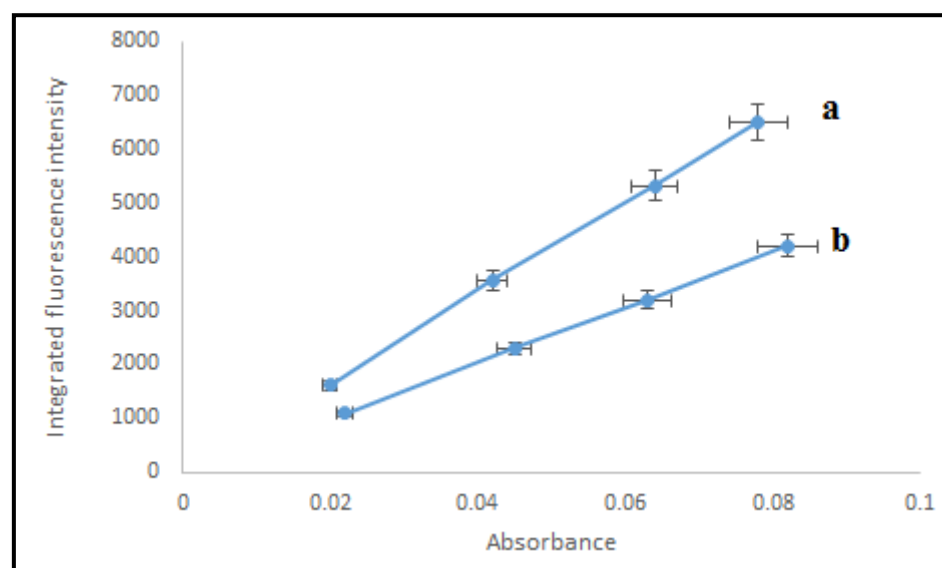
**Figure S7.** The effect of different pH values on the fluorescence intensity of pyridopyrazolopyrimidine 2.



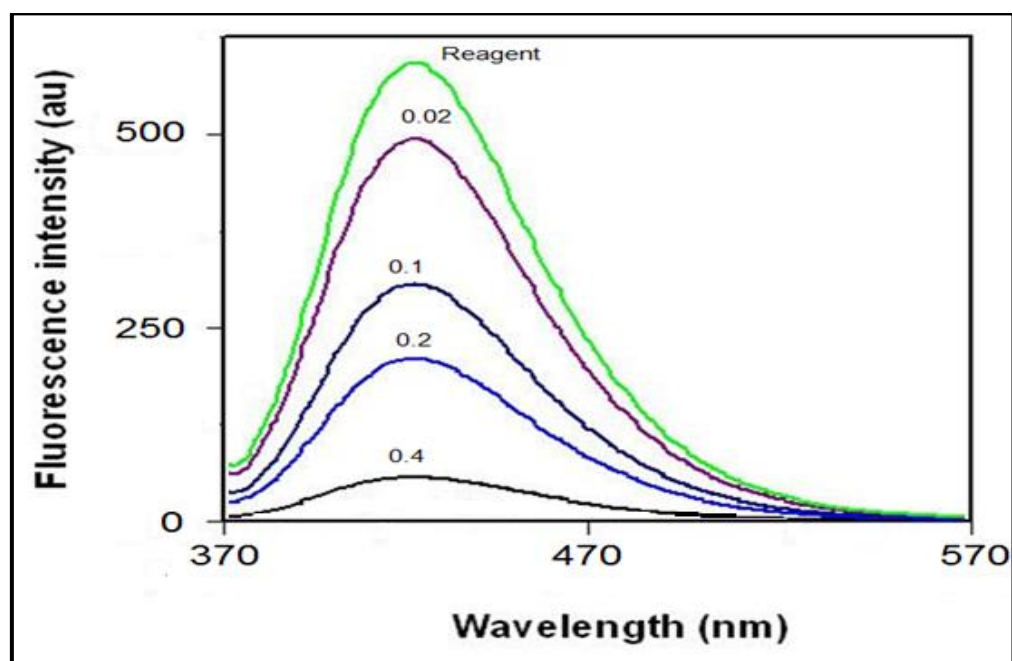
**Figure S8.** The effect of volume of reagent on the fluorescence intensity of pyridopyrazolopyrimidine 2.



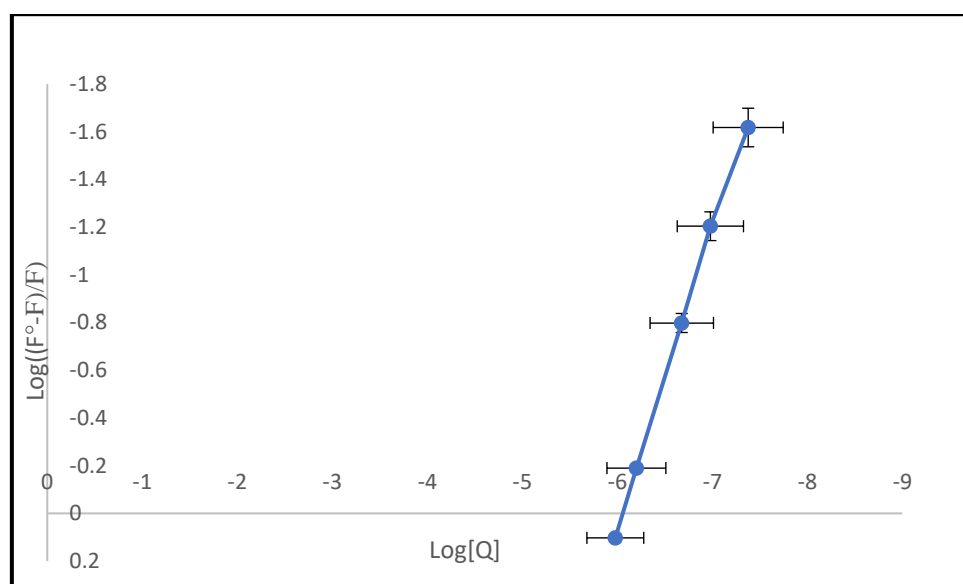
**Figure S9.** The effect of SDS concentration on the fluorescence intensity of pyridopyrazolopyrimidine 2.



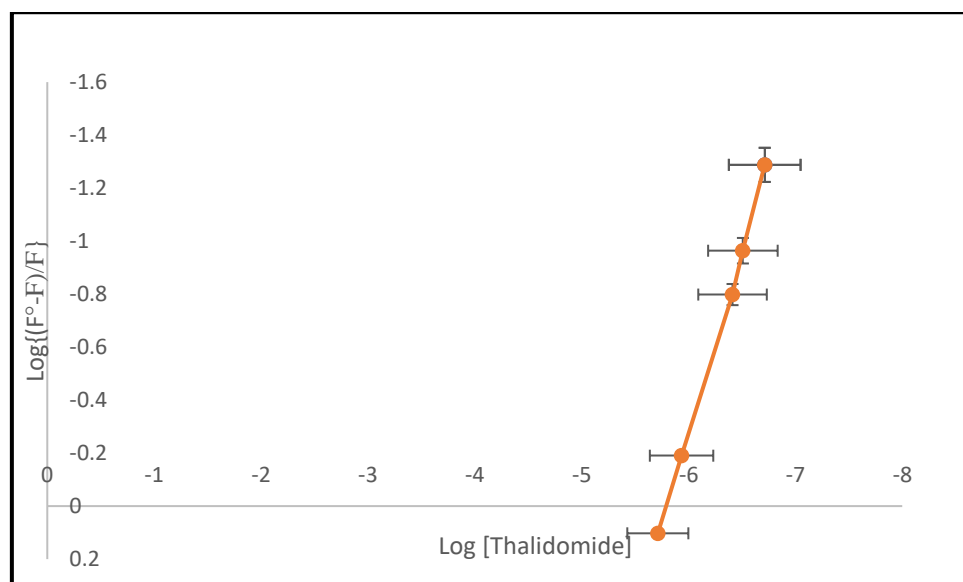
**Figure S10.** A plot of the integrated fluorescence intensity vs the absorbance of (a) standard quinine sulfate solution, (b) fluorophore solution.



**FigureS11:** Titrimetric emission spectra with proper concentrations of Darolutamide.



**Figure S12.** Modified Stern Volmer plot for darolutamide interaction with the reagent.



**Figure S13.** Modified Stern Volmer plot for thalidomide interaction with the reagent.