

Supplementary Materials

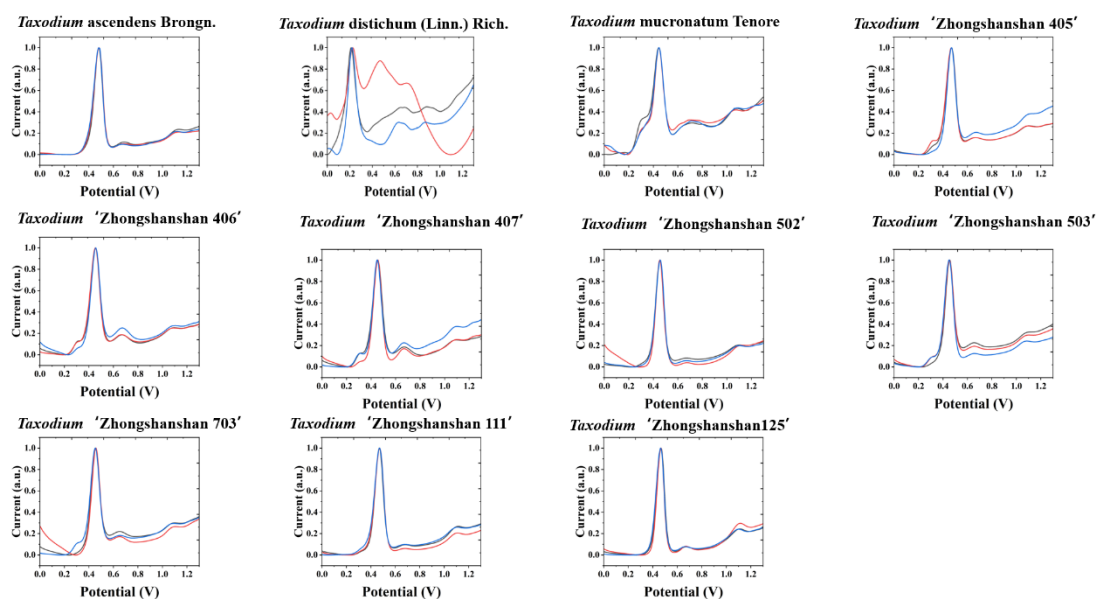


Figure S1. Electrochemical fingerprint of *T. ascendens*, *T. distichum*, *T. mucronatum*, *T. 'Zhongshanshan 405'*, *T. 'Zhongshanshan 406'*, *T. 'Zhongshanshan 407'*, *T. 'Zhongshanshan 502'*, *T. 'Zhongshanshan 503'*, *T. 'Zhongshanshan 703'*, *T. 'Zhongshanshan 111'* and *T. 'Zhongshanshan 125'* after water extraction and recorded under ABS condition.

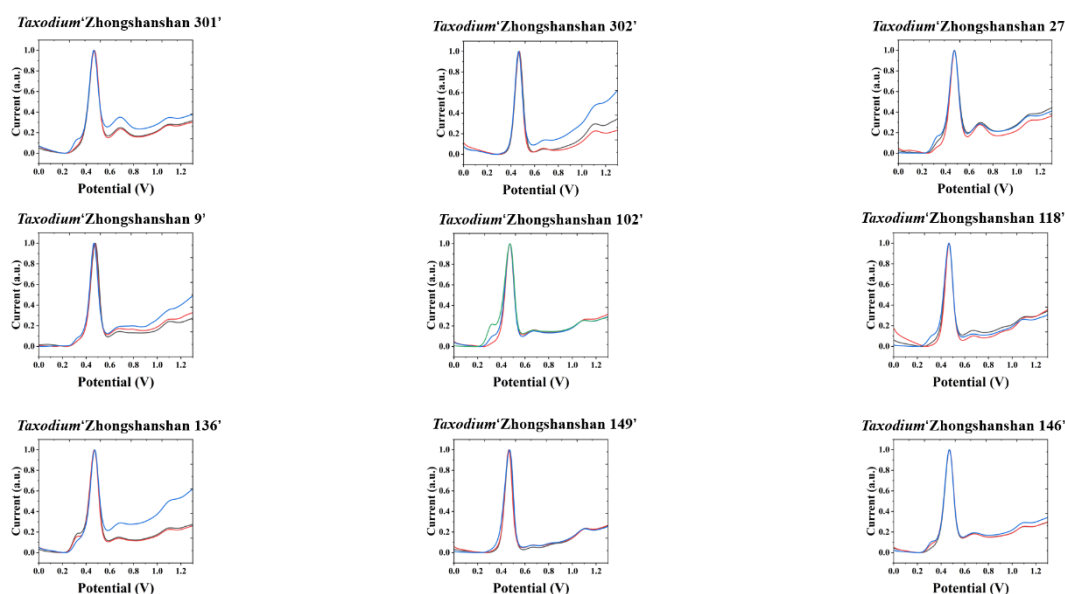


Figure S2. Electrochemical fingerprint of *T. 'Zhongshanshan 301'*, *T. 'Zhongshanshan 302'*, *T. 'Zhongshanshan 27'*, *T. 'Zhongshanshan 9'*, *T. 'Zhongshanshan 102'*, *T. 'Zhongshanshan 118'*, *T. 'Zhongshanshan 136'*, *T. 'Zhongshanshan 125'* and *T. 'Zhongshanshan 146'* after water extraction and recorded under ABS condition.

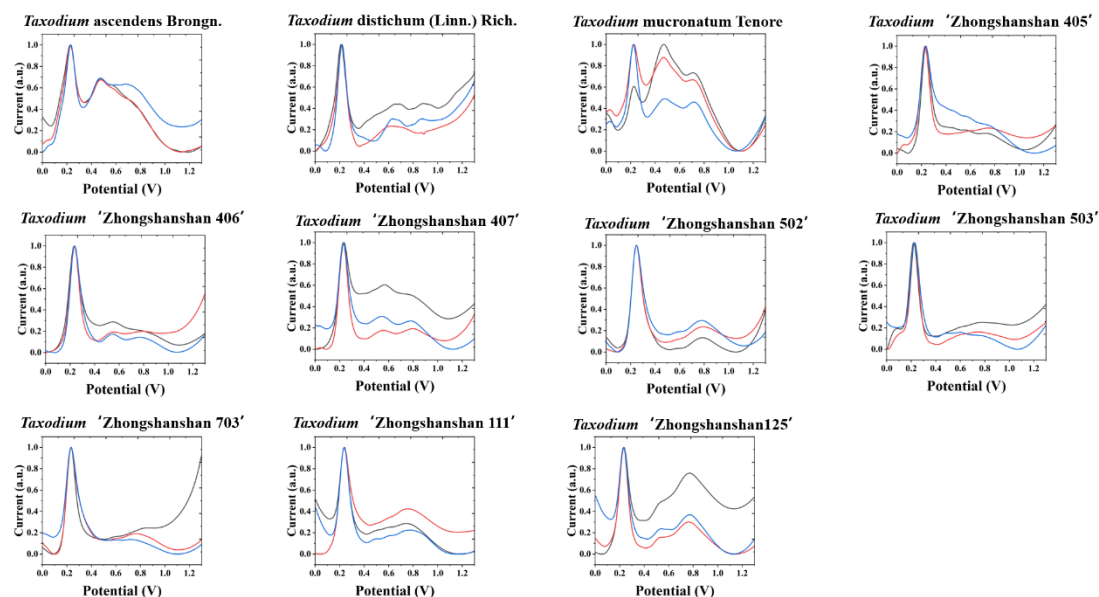


Figure S3. Electrochemical fingerprint of *T. ascendens*, *T. distichum*, *T. mucronatum*, *T. 'Zhongshanshan 405'*, *T. 'Zhongshanshan 406'*, *T. 'Zhongshanshan 407'*, *T. 'Zhongshanshan 502'*, *T. 'Zhongshanshan 503'*, *T. 'Zhongshanshan 703'*, *T. 'Zhongshanshan 111'* and *T. 'Zhongshanshan 125'* after water extraction and recorded under PBS condition.

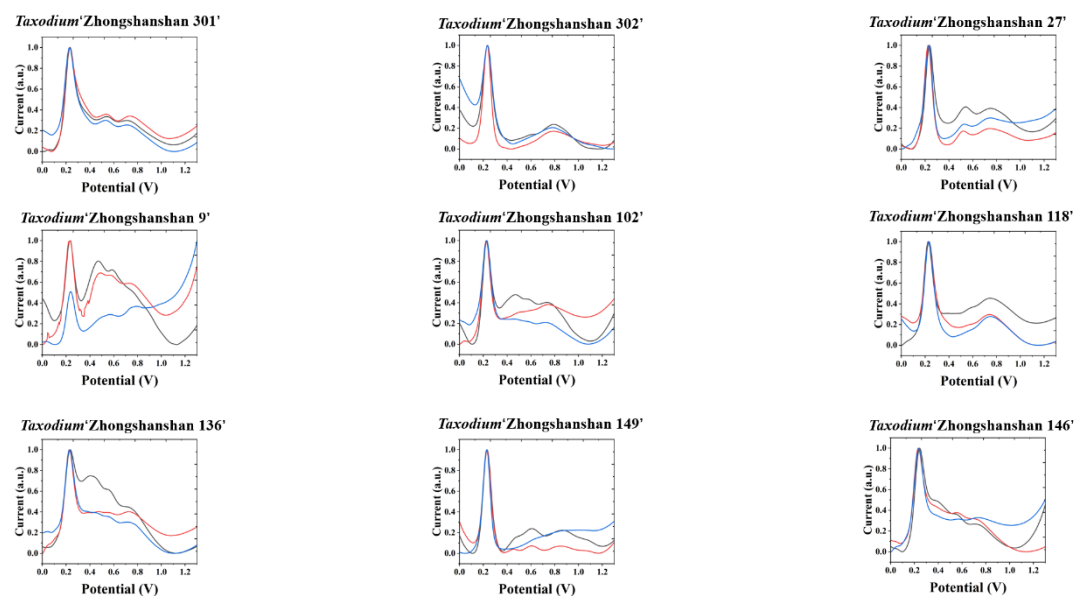


Figure S4. Electrochemical fingerprint of *T. 'Zhongshanshan 301'*, *T. 'Zhongshanshan 302'*, *T. 'Zhongshanshan 27'*, *T. 'Zhongshanshan 9'*, *T. 'Zhongshanshan 102'*, *T. 'Zhongshanshan 118'*, *T. 'Zhongshanshan 136'*, *T. 'Zhongshanshan 125'* and *T. 'Zhongshanshan 146'* after water water and recorded under ABS condition.

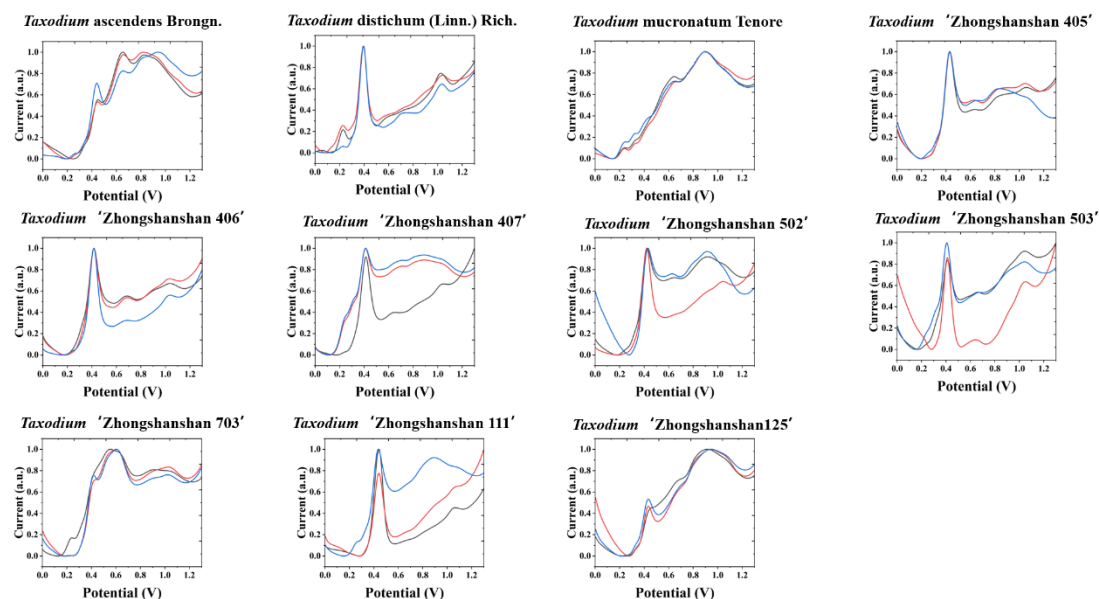


Figure S5. Electrochemical fingerprint of *T. ascendens*, *T. distichum*, *T. mucronatum*, *T. 'Zhongshanshan 405'*, *T. 'Zhongshanshan 406'*, *T. 'Zhongshanshan 407'*, *T. 'Zhongshanshan 502'*, *T. 'Zhongshanshan 503'*, *T. 'Zhongshanshan 703'*, *T. 'Zhongshanshan 111'* and *T. 'Zhongshanshan 125'* after ethanol extraction and recorded under ABS condition.

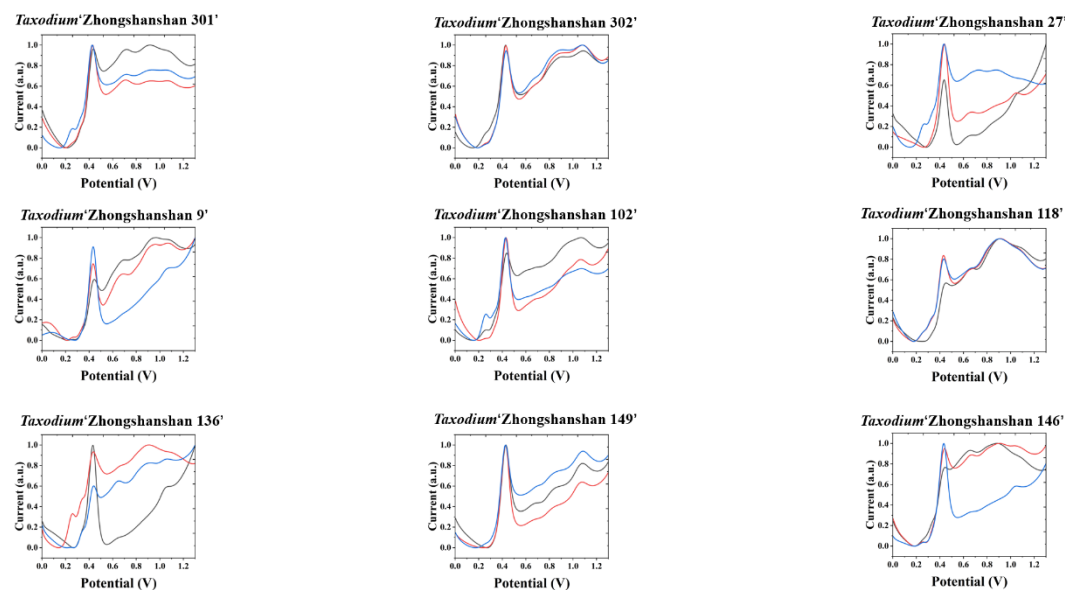


Figure S6. Electrochemical fingerprint of *T. 'Zhongshanshan 301'*, *T. 'Zhongshanshan 302'*, *T. 'Zhongshanshan 27'*, *T. 'Zhongshanshan 9'*, *T. 'Zhongshanshan 102'*, *T. 'Zhongshanshan 118'*, *T. 'Zhongshanshan 136'*, *T. 'Zhongshanshan 125'* and *T. 'Zhongshanshan 146'* after water ethanol and recorded under ABS condition.

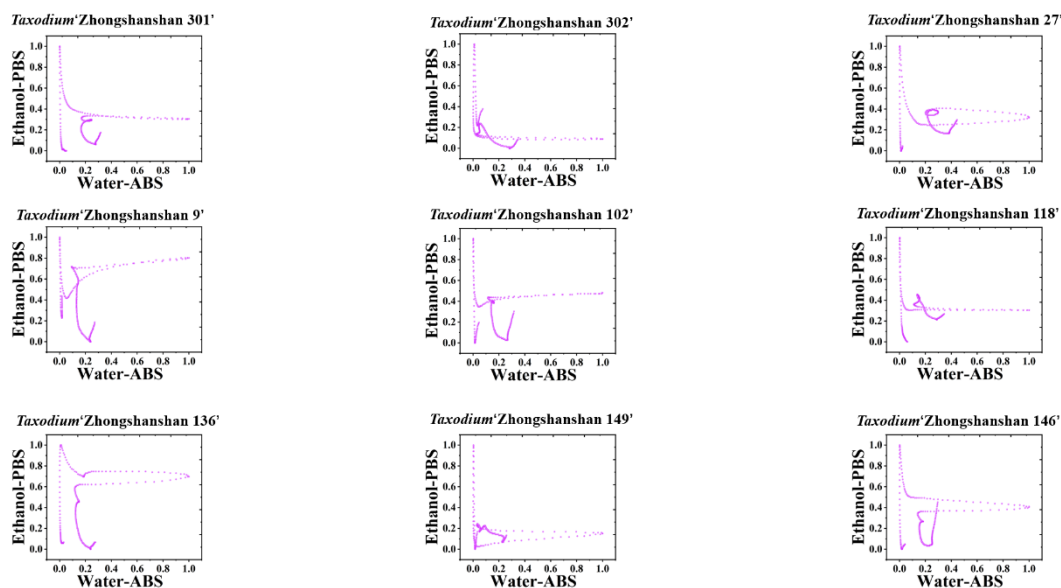


Figure S7. Scatter plots of *T.* 'Zhongshanshan 301', *T.* 'Zhongshanshan 302', *T.* 'Zhongshanshan 27', *T.* 'Zhongshanshan 9', *T.* 'Zhongshanshan 102', *T.* 'Zhongshanshan 118', *T.* 'Zhongshanshan 136', *T.* 'Zhongshanshan 125' and *T.* 'Zhongshanshan 146' combining the signals collected under ABS for the water extracts and under PBS for the ethanol extracts.

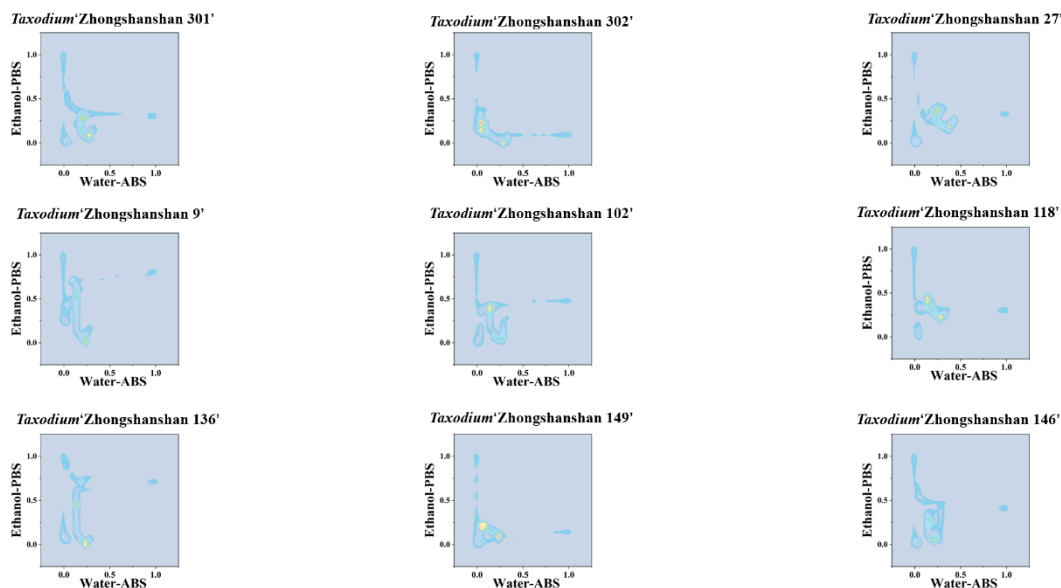


Figure S8. 2D density map of *T.* 'Zhongshanshan 301', *T.* 'Zhongshanshan 302', *T.* 'Zhongshanshan 27', *T.* 'Zhongshanshan 9', *T.* 'Zhongshanshan 102', *T.* 'Zhongshanshan 118', *T.* 'Zhongshanshan 136', *T.* 'Zhongshanshan 125' and *T.* 'Zhongshanshan 146' combining the signals collected under ABS for the water extracts and under PBS for the ethanol extracts.

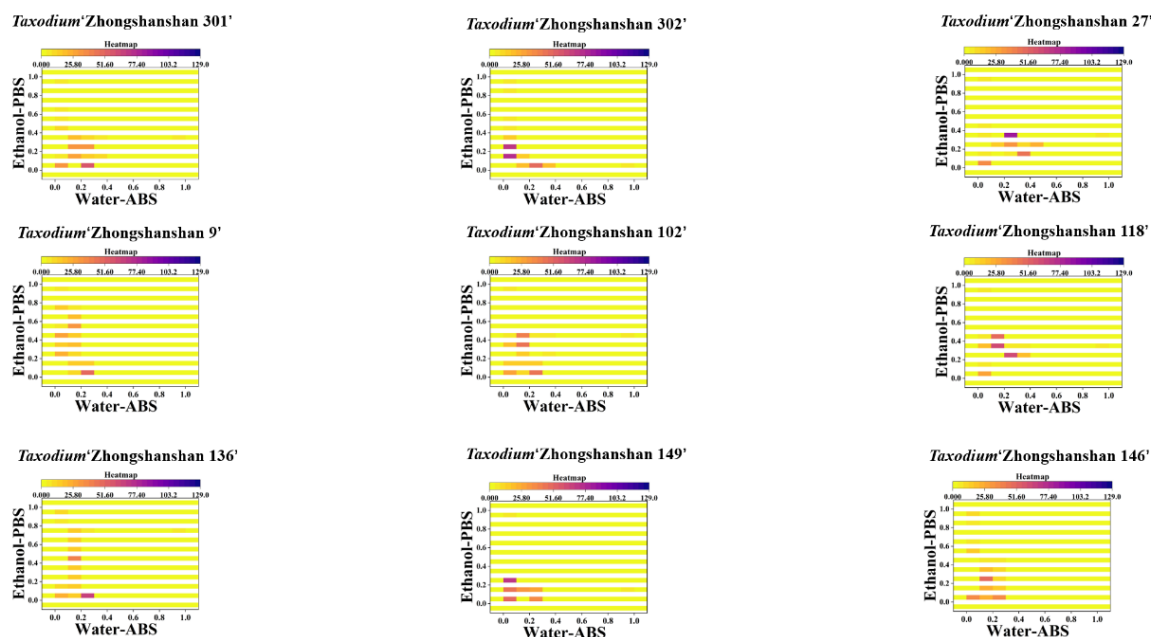


Figure S9. Heatmap of *T.* 'Zhongshanshan 301', *T.* 'Zhongshanshan 302', *T.* 'Zhongshanshan 27', *T.* 'Zhongshanshan 9', *T.* 'Zhongshanshan 102', *T.* 'Zhongshanshan 118', *T.* 'Zhongshanshan 136', *T.* 'Zhongshanshan 125' and *T.* 'Zhongshanshan 146' combining the signals collected under ABS for the water extracts and under PBS for the ethanol extracts.