

Supplementary information

**Conversion of Black Carbon Emitted from Diesel-Powered Merchant Ships to Novel Conductive Carbon Black for Lithium Ion Batteries**

Jae-Hyuk Choi <sup>a</sup>, Dae-Yeong Kim <sup>b</sup>, Won-Ju Lee <sup>b,\*</sup> & Jun Kang <sup>b,\*</sup>

<sup>a</sup> Division of Marine System Engineering, Korea Maritime and Ocean University, Busan 49112, Korea

<sup>b</sup> Division of Marine Engineering, Korea Maritime and Ocean University, Busan 49112, Korea

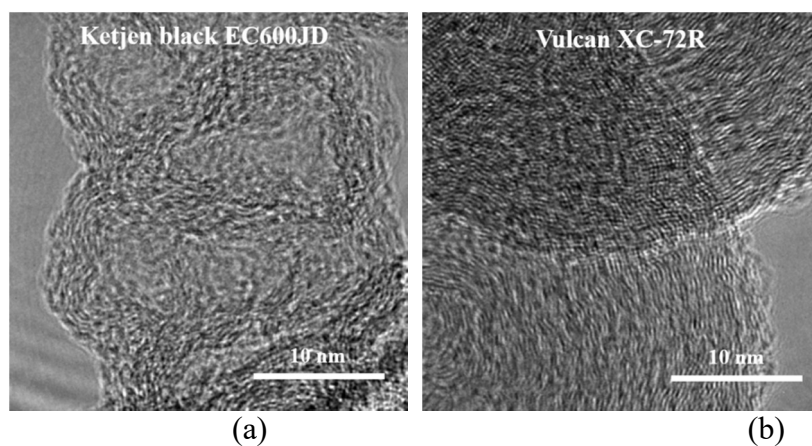


Fig. S1. Transmission electron microscopy images of (a) Ketjen black and (b) Vulcan black.