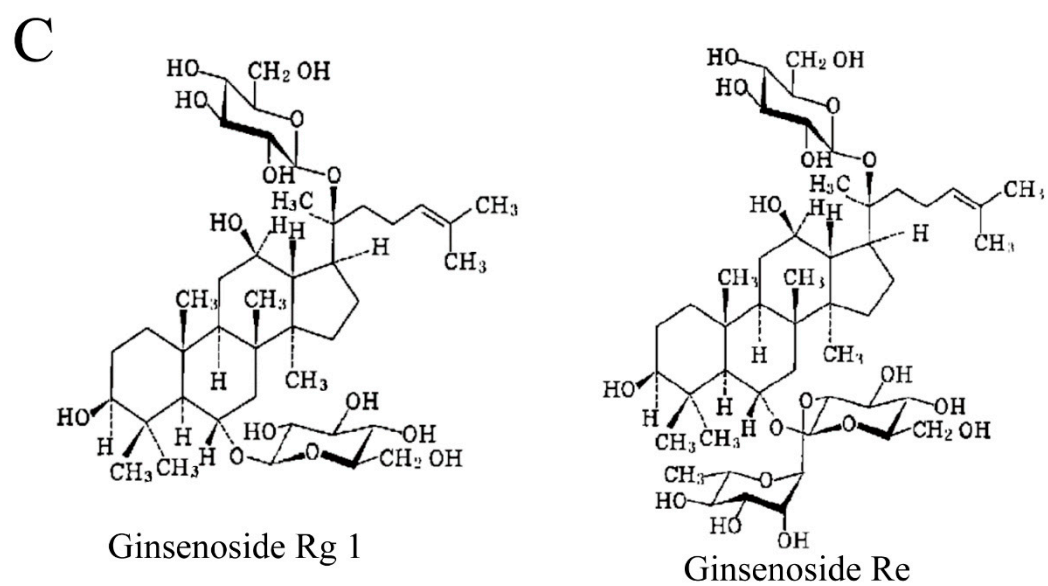
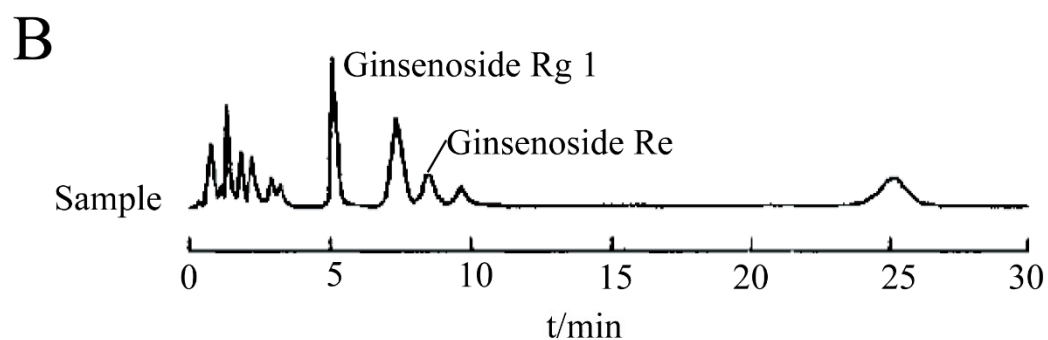
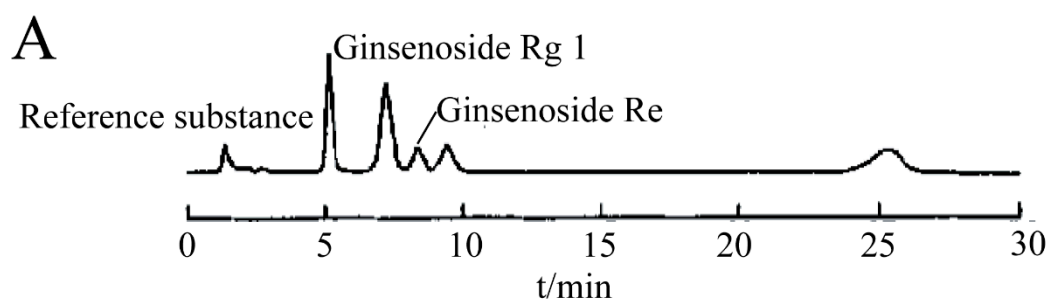


Supplementary Figure S1: Purity identification of osteopractic total flavone (OTF). A, HPLC ion chromatogram of OTF (Reference substance): Neoeriocitrin and Naringin. B, HPLC ion chromatogram of OTF (Sample): Neoeriocitrin and Naringin. C, the molecular formulas of Neoeriocitrin and Naringin.



Supplementary Figure S2: Purity identification of panax notoginseng saponins (PNS). A, HPLC ion chromatogram of PNS (Reference substance): Ginsenoside Rg 1 and Ginsenoside Re. B, HPLC ion chromatogram of PNS (Sample): Ginsenoside Rg 1 and Ginsenoside Re. C, the molecular formulas of Ginsenoside Rg 1 and Ginsenoside Re.