

**Adsorption and Release Properties of Drug Delivery System Naproxen - SBA-15:
Effect of Surface Polarity, Sodium/Acid Drug Form and *pH***

Luboš Zauška^a, Eva Beňová^a, Martina Urbanová^b, Jíří Brus^b, Vladimír Zelenák^a,
Virginie Hornebecq^c, Miroslav Almáši^a

^aDepartment of Inorganic Chemistry, Faculty of Science, P. J. Šafárik University,
Moyzesova 11, SK-041 01 Košice, Slovak Republic

^b Laboratory of Solid State NMR Spectroscopy, Department of Macromolecular
Chemistry, Academy of Sciences of the Czech Republic, Heyrovsky square 2, CZ-
162 06 Prague, Czech Republic

^c Aix-Marseille University, CNRS, MADIREL, F-133 97 Marseille, France

Figures:

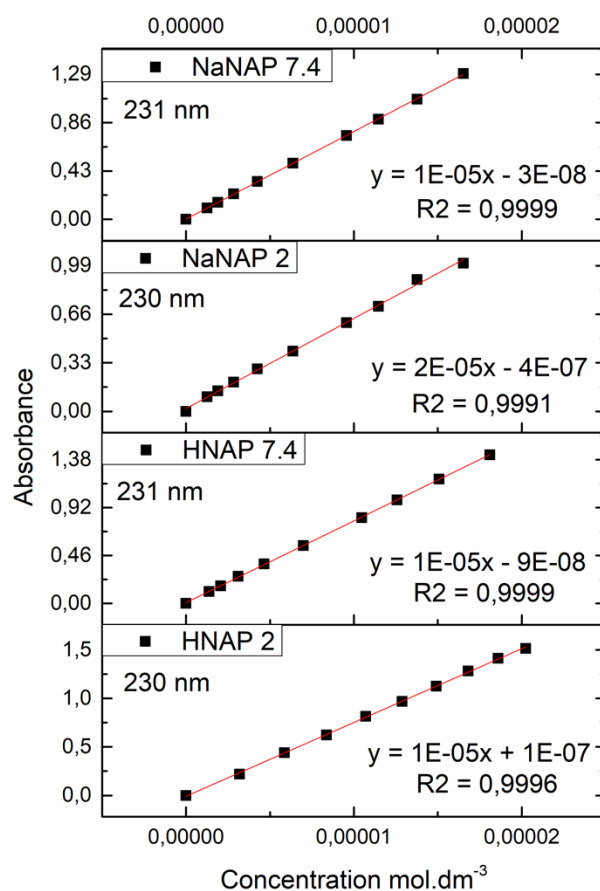


Figure S1. Calibration curves of naproxen sodium and naproxen acid at different pH obtained from UV measurements used for determination of total released amount of drug.

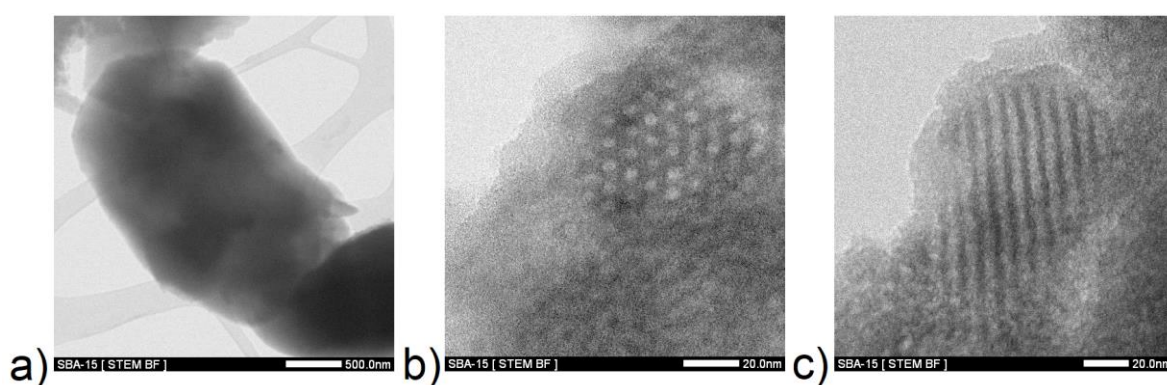


Figure S2. TEM images of prepared SBA-15 material: a) a shape of particles and a view along b) along and c) parallel direction to the pores.

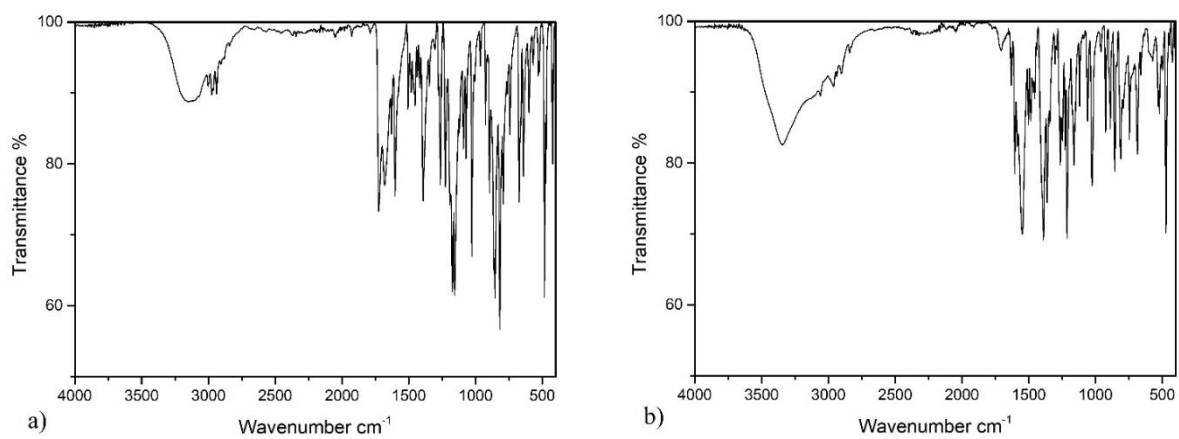


Figure S3. IR spectra of a) naproxen acid and b) naproxen sodium.

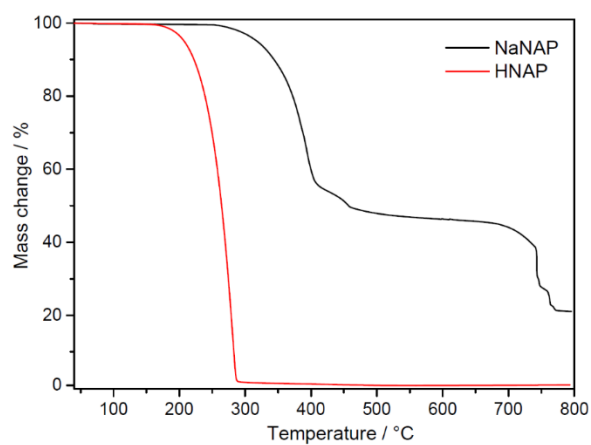


Figure S4. TG curves of pure drugs: naproxen sodium and naproxen acid measured in an air atmosphere.