

Supplementary Materials

***Emericellopsis maritima* and *Purpureocillium lilacinum* marine fungi as a source of functional fractions with antioxidant and antitumor potential in colorectal cancer: a preliminary study**

Table S1. Primer sequence used in the real-time quantitative.

Gene		Primer sequence (5' → 3')
CD44	Forward	TTATCAGGAGACCAAGACAC
	Reverse	ATCAGCCATTCTGGAATTTG
CD24	Forward	CAGTAGTCTTGATGACCAAAG
	Reverse	ACAGCATTCTGGAATAAAGC
NANOG	Forward	CCAGAACCAGAGAATGAAATC
	Reverse	TGGTGGTAGGAAGAGTAAAG
SOX2	Forward	GATCCTGGACTTCTTTTTGG
	Reverse	TCTATACAAGGTCCATTCCC
CD133	Forward	CAGTATCAATTCAGTGCTAGG
	Reverse	CTTAATCTCATCAAGAACAGGG
OCT4	Forward	CAACAATATCCACTTTACCAGAG
	Reverse	GATCACCCCTGGGATATACAC
GADPH	Forward	TCGGAGTCAACGGATTTG
	Reverse	CAACAATATCCACTTTACCAGAG

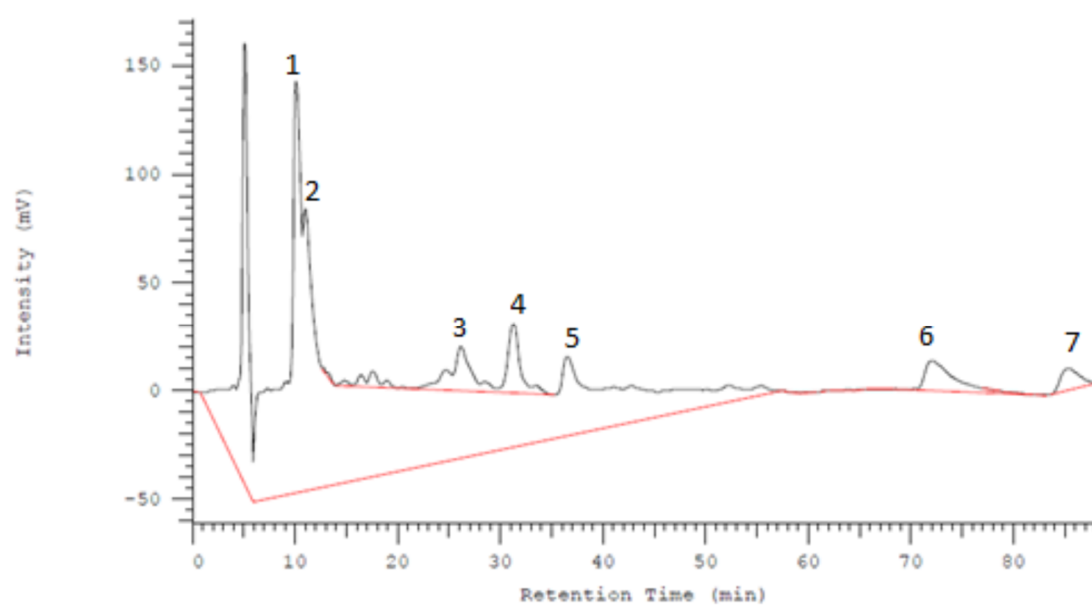


Figure S1. HPLC analysis from fraction Fr-EM3. Compounds **1**, **2**, and **3** are picks 5, 6, and 7 respectively.

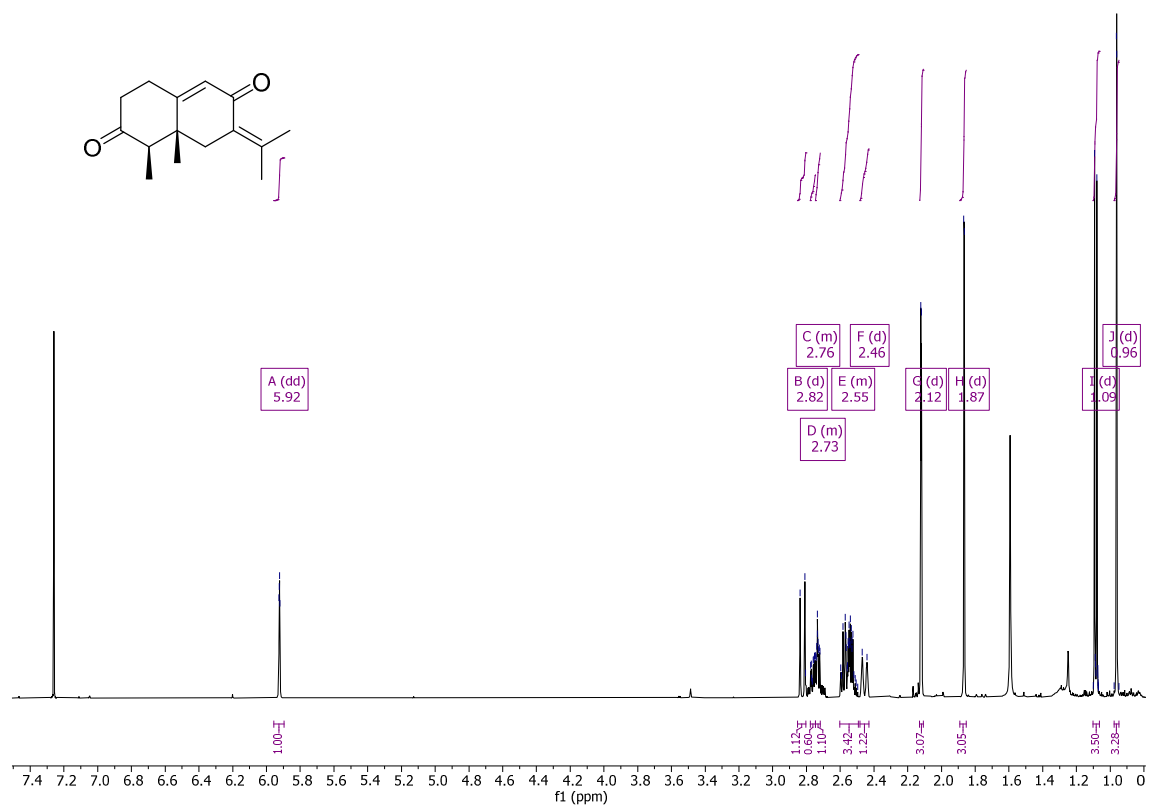


Figure S2. ¹H-NMR from compound **1** in CDCl₃.

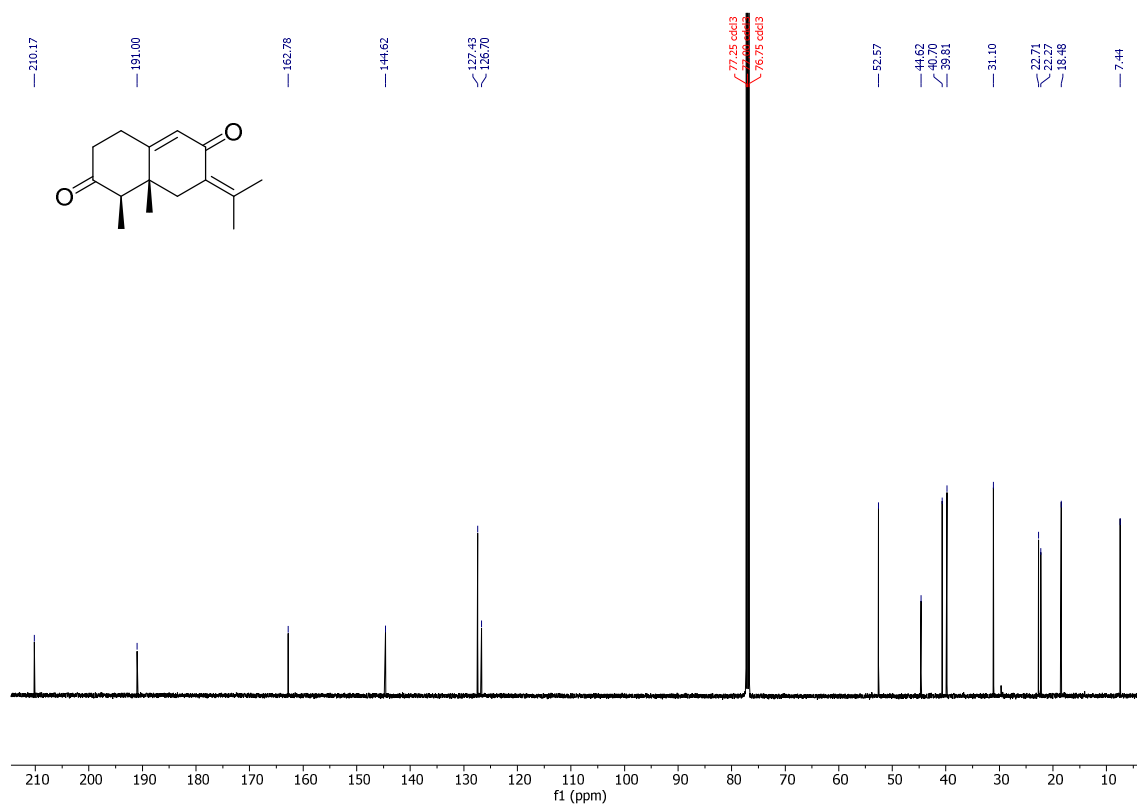


Figure S3. ¹³C-NMR from compound **1** in CDCl₃.

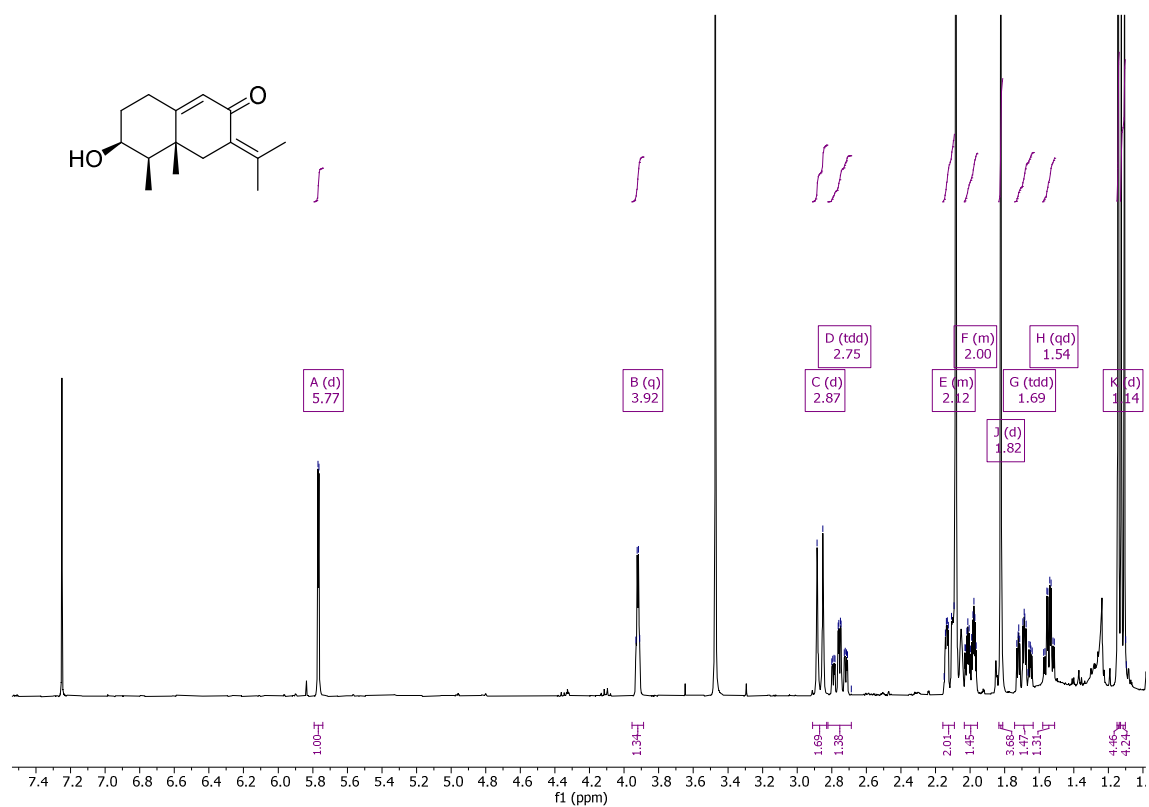


Figure S4. ¹H-NMR from compound **2** in CDCl₃.

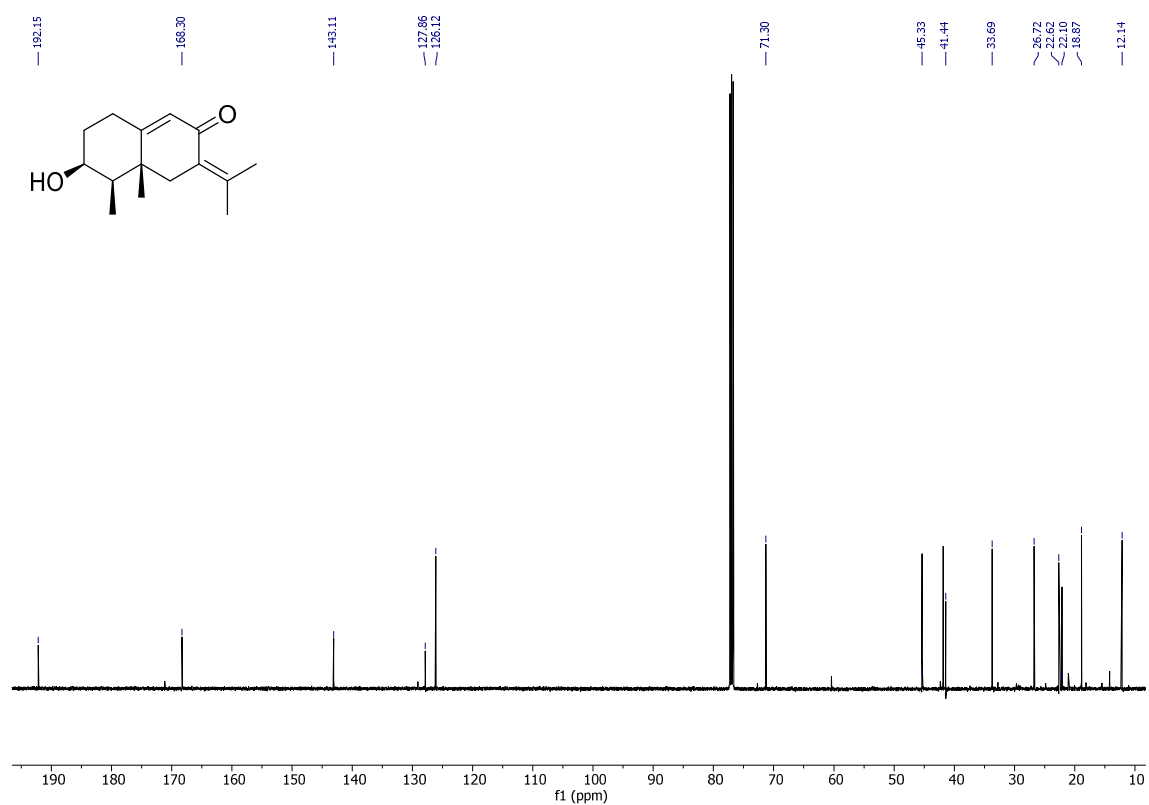


Figure S5. ¹³C-NMR from compound **2** in CDCl₃.

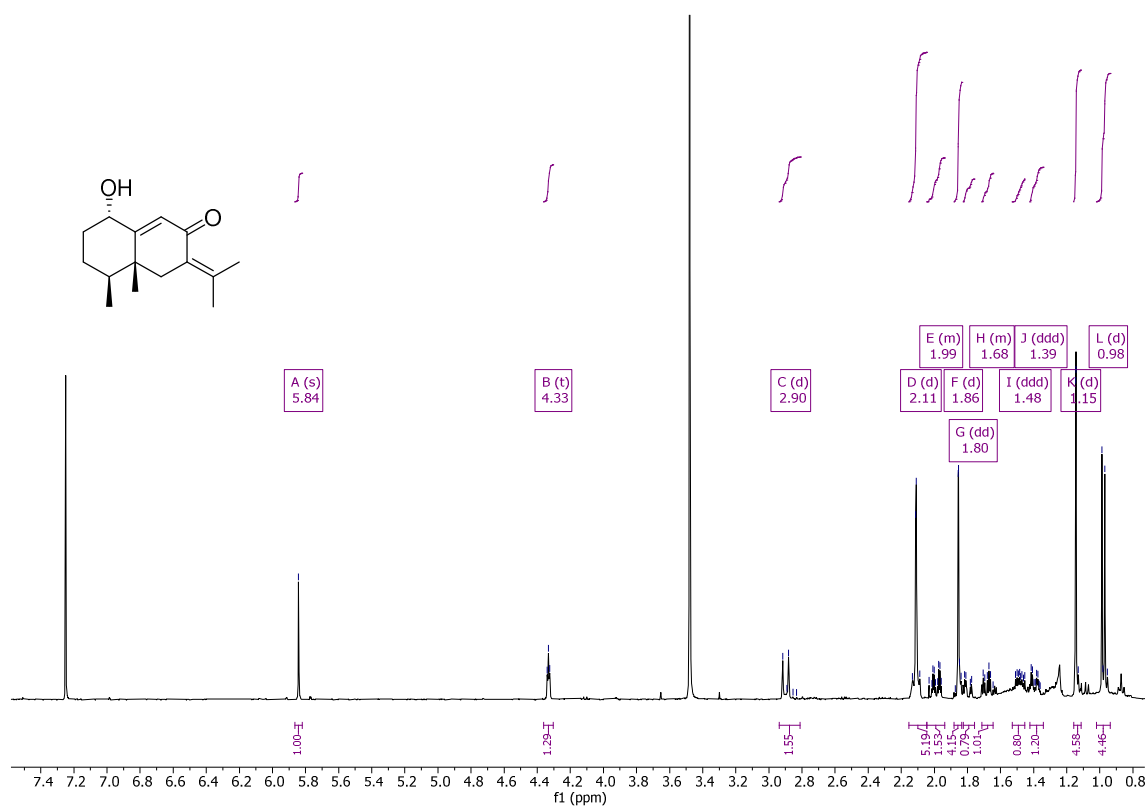


Figure S6. ¹H-NMR from compound **3** in CDCl₃.

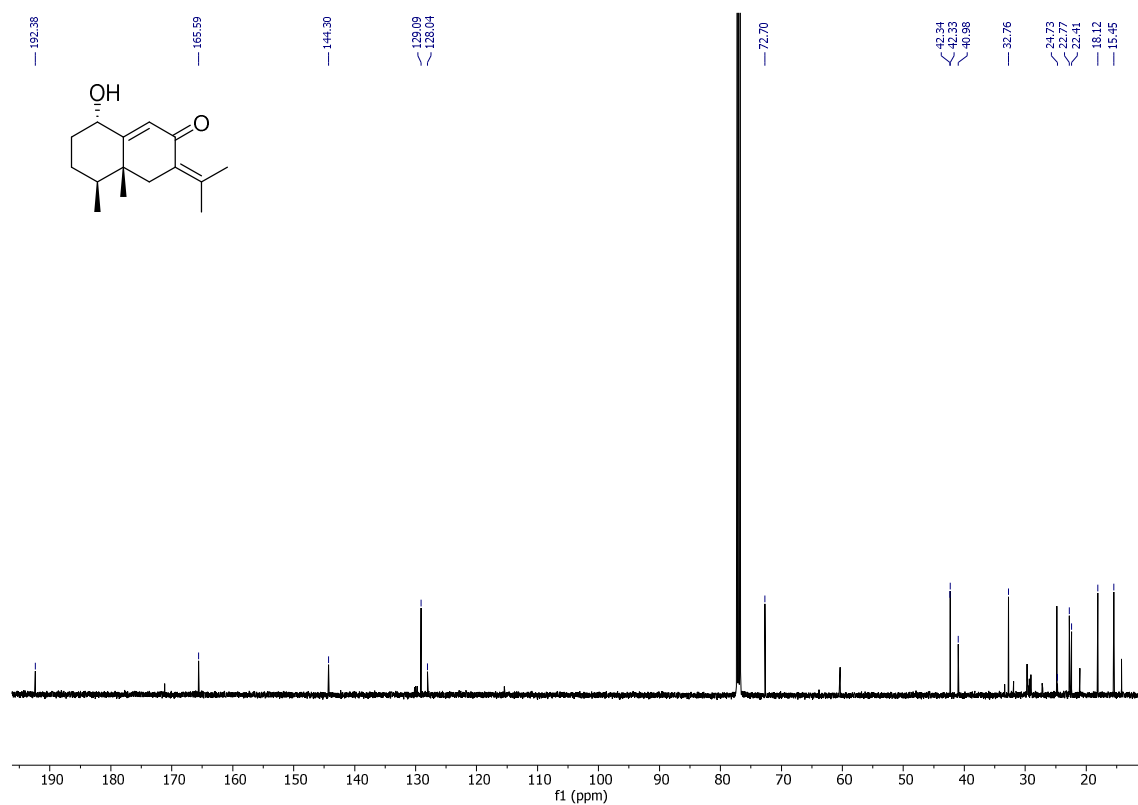


Figure S7. ¹³C-NMR from compound **3** in CDCl₃.

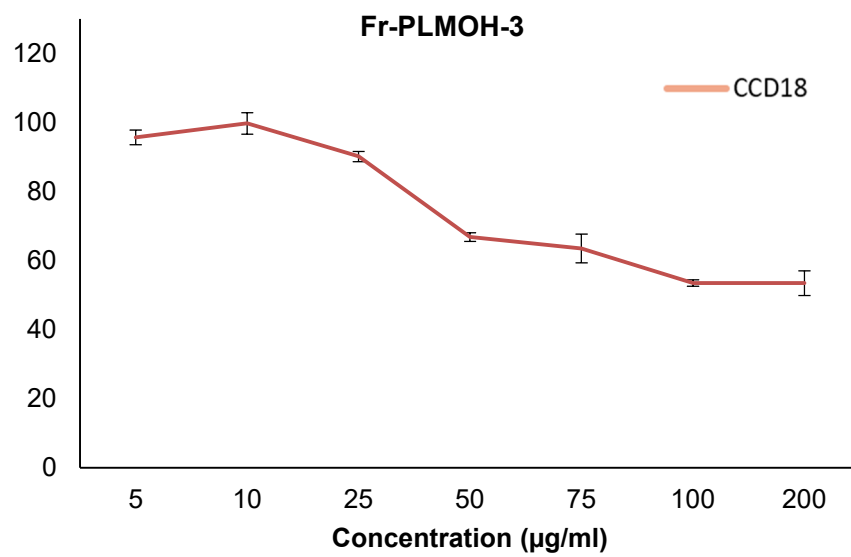


Figure S8. Cytotoxicity activity expressed as relative proliferation in CCD18 non- tumor cell line. Data are represented as mean \pm standard deviation of triplicate cultures.

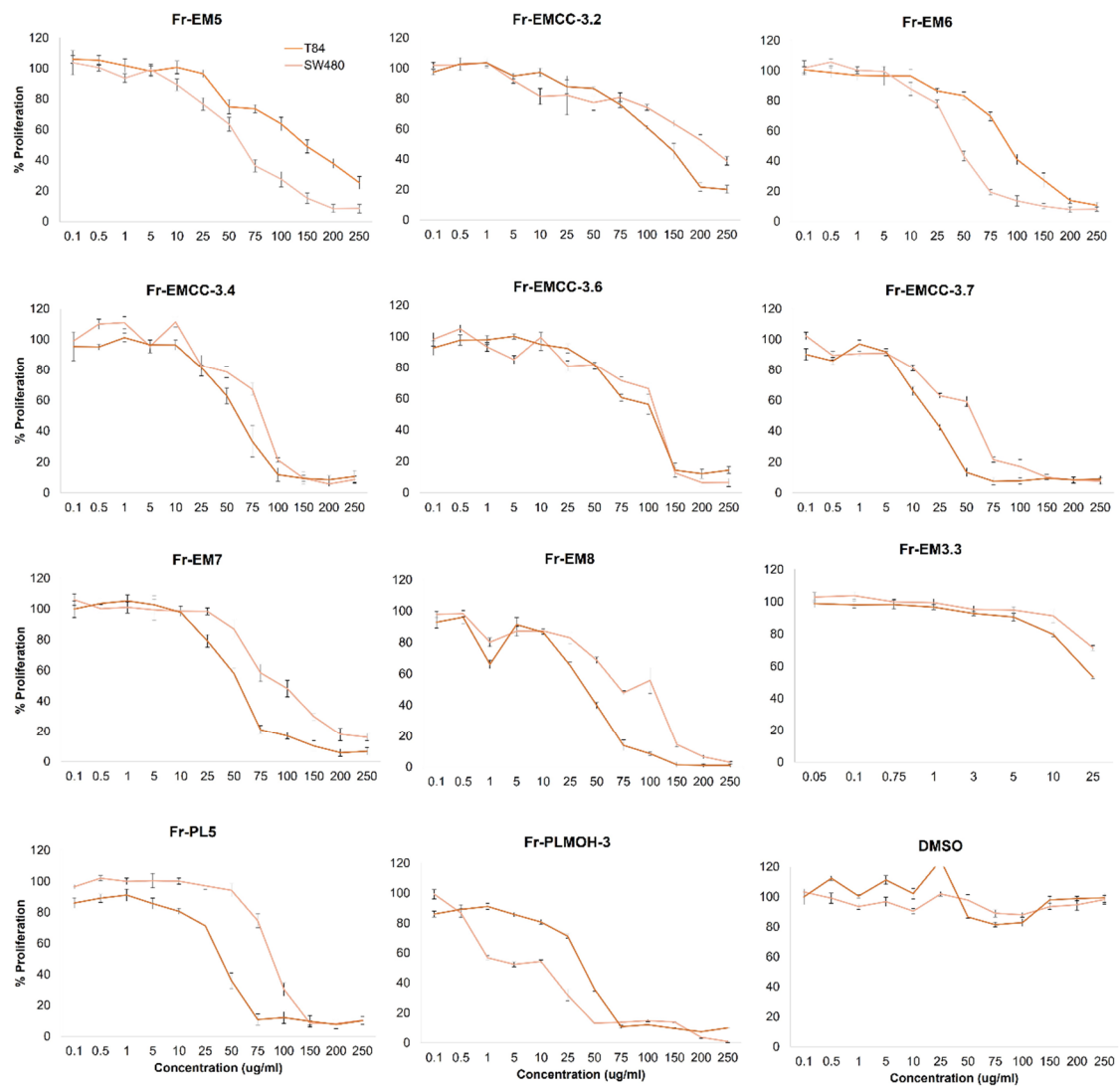


Figure S9. Proliferation assay in T84 and SW480 CRC cell lines treated with functional fractions obtained from the fermentation of marine-derived fungi *Emericellopsis maritima* and *Purpureocillium lilacinum*. DMSO was used as a solvent for all samples. Data are represented as mean \pm standard deviation of triplicate cultures.

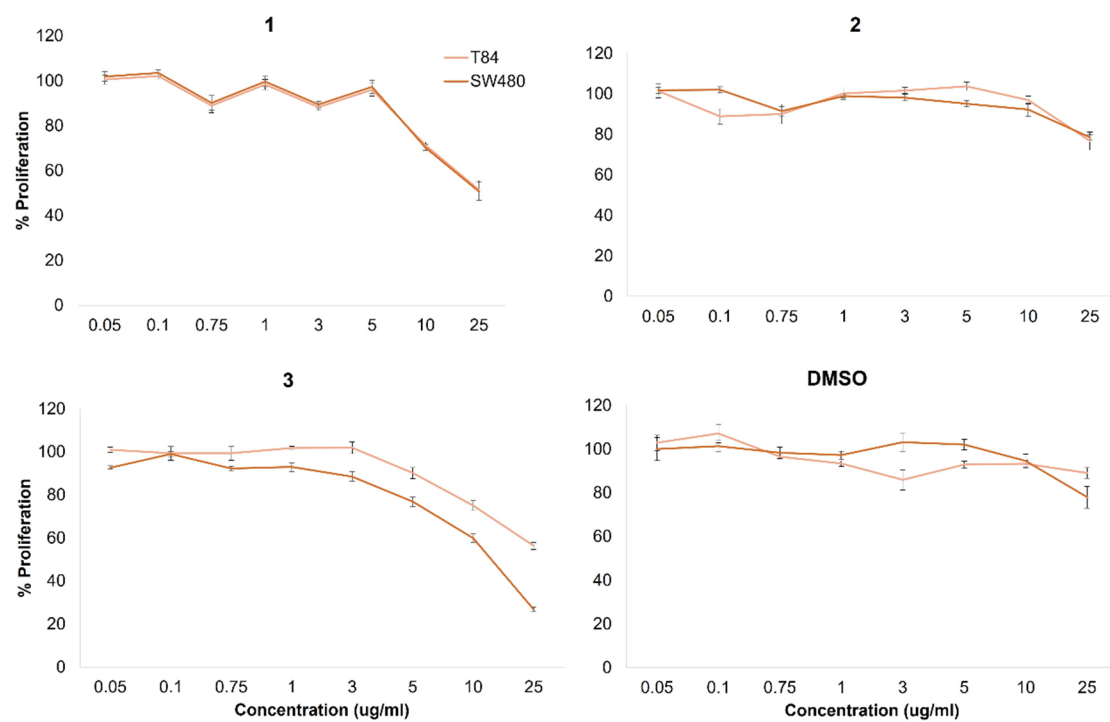


Figure S10. Proliferation assay in T84 and SW480 CRC cell lines treated with compounds from the fermentation broth of marine-derived fungus *Emericellopsis maritima*. DMSO was used as solvent for all samples. Data are represented as mean \pm standard deviation of triplicate cultures.