

## Supplementary Appendix

### Balanced Crystalloids versus Normal Saline in Adults with Sepsis: A Comprehensive Systematic Review and Meta-Analysis

#### Supplementary tables

Title	Page
Supplementary Table S1: Search strategy used in each database searched.	2
Supplementary Table S2: Quality assessment of the included studies in the meta-analysis.	3-4

#### Supplementary figures:

Title	Page
Supplementary Figure S1: Leave-one-out sensitivity analysis for overall mortality, acute kidney injury, and need for renal replacement therapy.	5
Supplementary Figure S2: Leave-one-out sensitivity analysis for overall mortality by exclusion of the study by Shaw et al.	6
Supplementary Figure S3: Funnel plot showing publication bias analysis of studies that compared balanced crystalloids versus normal saline regarding overall mortality.	7

Supplementary Table S1: Search strategy used in each database searched.

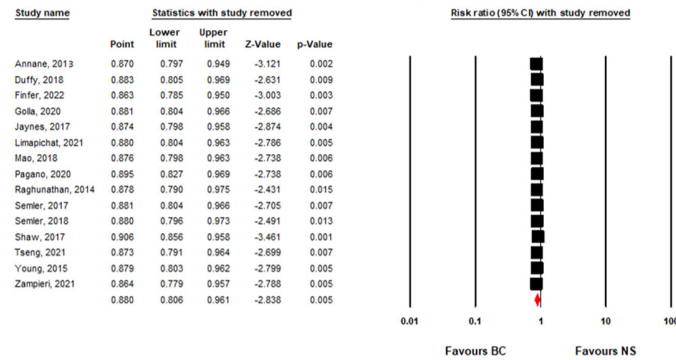
Database	Search Strategy	Articles retrieved
PubMed/MEDLINE	("sepsis"[MeSH Terms] OR "sepsis"[All Fields] OR ("shock, septic"[MeSH Terms] OR ("shock"[All Fields] AND "septic"[All Fields]) OR "septic shock"[All Fields] OR ("septic"[All Fields] AND "shock"[All Fields]))) AND ("saline solution"[MeSH Terms] OR ("saline"[All Fields] AND "solution"[All Fields]) OR "saline solution"[All Fields] OR ("normal"[All Fields] AND "saline"[All Fields]) OR "normal saline"[All Fields] OR (("isotonic"[All Fields] OR "isotonically"[All Fields] OR "isotonicity"[All Fields] OR "isotonics"[All Fields]) AND ("saline solution"[MeSH Terms] OR ("saline"[All Fields] AND "solution"[All Fields]) OR "saline solution"[All Fields] OR "saline"[All Fields] OR "salines"[All Fields]))) AND (((("balance"[All Fields] OR "balanced"[All Fields] OR "balances"[All Fields] OR "balancing"[All Fields]) AND ("crystalloid solutions"[MeSH Terms] OR "crystalloid"[All Fields] AND "solutions"[All Fields]) OR "crystalloid solutions"[All Fields] OR "crystalloid"[All Fields] OR "crystalloids"[All Fields] OR "crystalloidal"[All Fields])) OR ("ringer s lactate"[MeSH Terms] OR ("ringer s"[All Fields] AND "lactate"[All Fields]) OR "ringer s lactate"[All Fields] OR ("lactated"[All Fields] AND "ringer"[All Fields]) OR "lactated ringer"[All Fields]) OR "plasmalyte"[All Fields])	97
Embase	('sepsis'/exp OR sepsis OR 'septic shock'/exp OR 'septic shock' OR (septic AND ('shock'/exp OR shock))) AND ('normal saline'/exp OR 'normal saline' OR (normal AND ('saline'/exp OR saline)) OR 'isotonic saline' OR (isotonic AND ('saline'/exp OR saline))) AND ('balanced crystalloids' OR (balanced AND crystalloids) OR 'lactated ringer' OR (lactated AND ringer) OR 'plasmalyte'/exp OR plasmalyte)	156
Web of Science	(sepsis OR (septic shock)) AND ((normal saline) OR (isotonic saline)) AND ((balanced crystalloids) OR (lactated ringer) OR plasmacyte)	102

Supplementary Table S2: Quality assessment of the included studies in the meta-analysis.

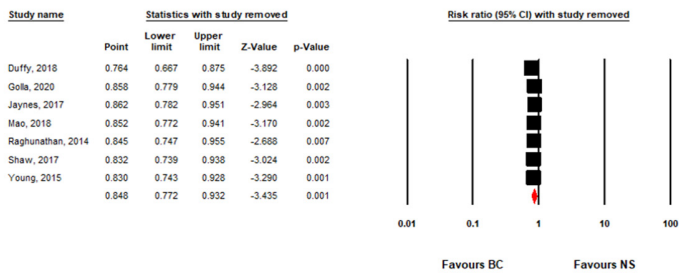
Cohort studies	Selection				Comparability	Outcome			Quality score
	Representativeness of the exposed cohort	Selection of non-exposed cohort	Ascertainment of exposure	Demonstration that outcome of interest was not present at start of study	Comparability of the cohorts on the basis of design or analysis	Assessment of outcome	Was follow up long enough for outcomes to occur	Adequacy of follow up cohorts	
Duffy, 2018	1	1	1	1	1	1	0	1	7
Jaynes, 2017	1	1	1	1	1	1	0	1	7
Limapichat, 2021	1	1	1	1	0	1	0	1	6
Mao, 2018	1	1	1	1	1	1	0	0	6
Raghunathan, 2014	1	1	1	1	1	1	0	1	7
Shaw, 2017	1	1	1	1	1	1	0	0	6
Tseng, 2021	1	1	1	1	1	1	1	0	7
Randomized controlled studies	Randomization				Blinding		Withdrawals		Quality score
	Was the study described as randomized?		Was the randomization appropriate?		Was the study described as double blind?	Was the double blinding appropriate?	Was there a description of withdrawals and dropouts?		
Annane, 2013	1		1		0	0	1		3
Finfer, 2022	1		1		1	1	1		5
Golla, 2020	1		1		0	0	1		3
Pagano, 2020	1		1		0	0	1		3
Semler, 2017	1		1		0	0	1		3
Semler, 2018	1		1		0	0	1		3

Young, 2015	1	1	1	1	1	5
Zampieri, 2021	1	1	1	1	1	5

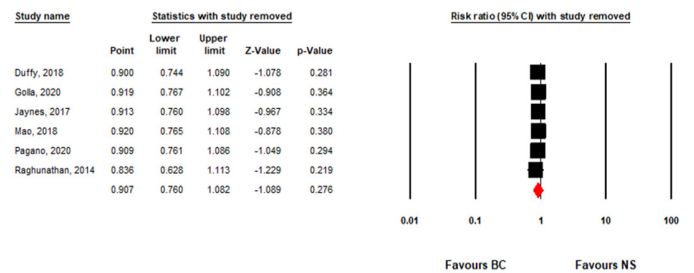
### Overall Mortality



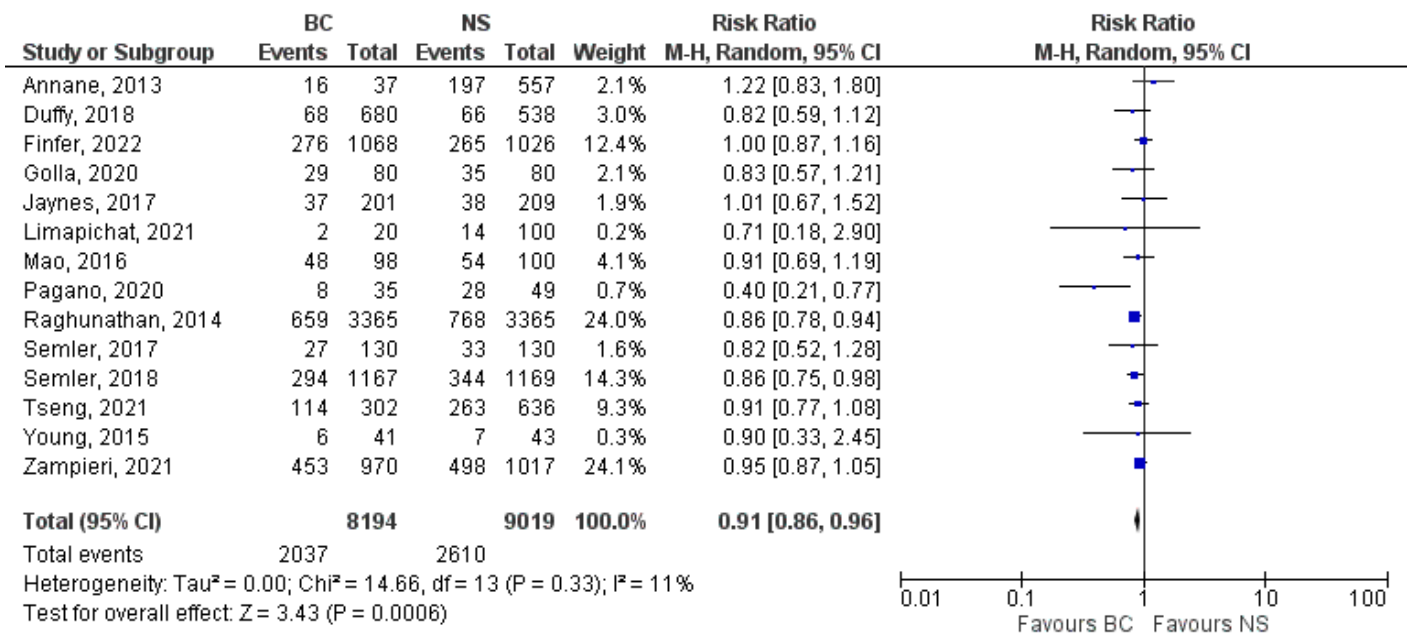
### Acute Kidney Injury



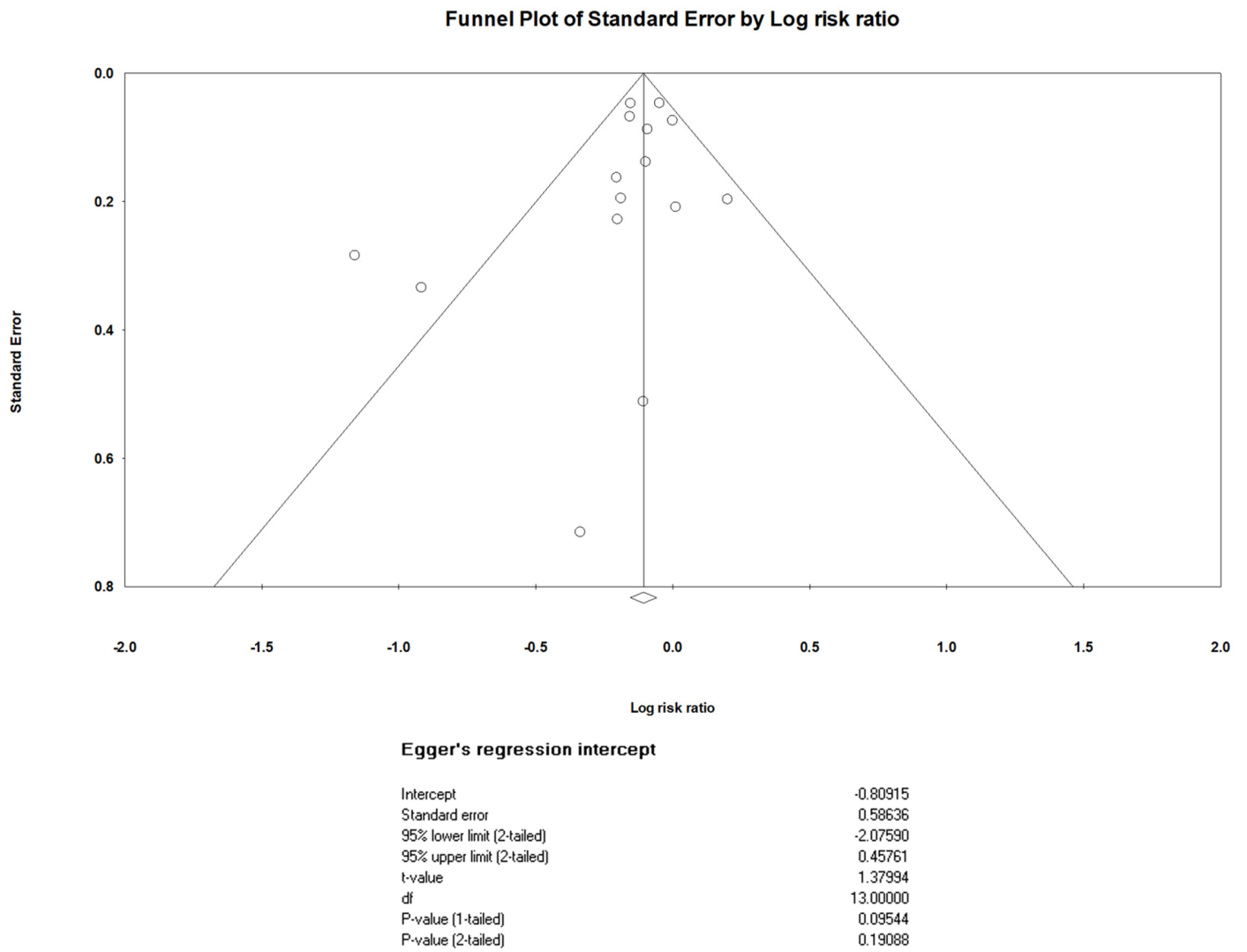
### Need for Renal Replacement Therapy



Supplementary Figure S1: Leave-one-out sensitivity analysis for overall mortality, acute kidney injury, and need for renal replacement therapy.



Supplementary Figure S2: Leave-one-out sensitivity analysis for overall mortality by exclusion of the study by Shaw et al.



Supplementary Figure S3: Funnel plot showing publication bias analysis of studies that compared balanced crystalloids versus normal saline regarding overall mortality.