

Supplementary Materials:

Table S1. HTMC lines information P: passage, IF: immunofluorescence, WB: Western blot.

HTMC line number	Age of the donor (years)	Characterization at passage	Used in experimental set (passage)
1	60	P1	IF (P3)
2	83	P1	IF (P3)
3	86	P1	IF (P4) WB (P6) Matrigel (P5)
4	62	P3	IF (P4, P6)
5	60	P3	WB (P6)
6	51	P2	IF (P3) Matrigel (P5)
7	50	P2	IF (P3)
8	76	P2	IF (P6) Matrigel (P6)
9	71	P2	IF (P6) WB (P6)
10	49	P4	WB (P5)
11	74	P4	IF (P5) WB (P5) Matrigel (P6)

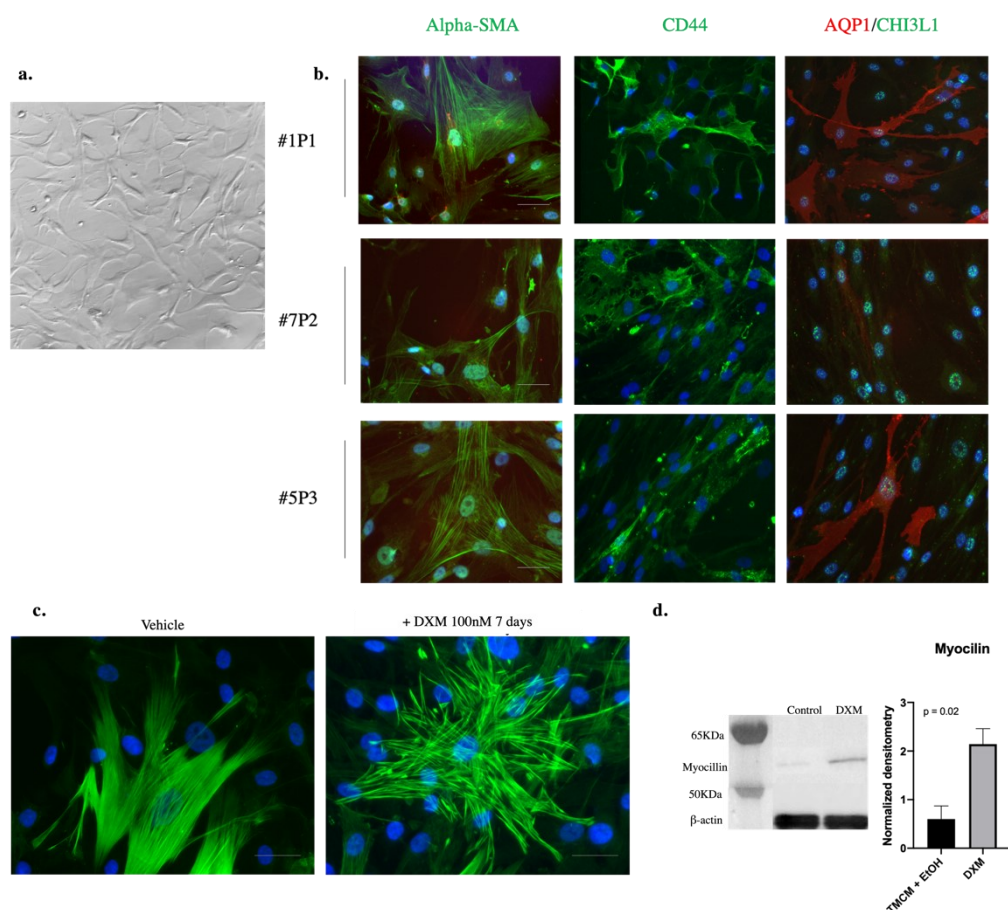


Figure S1. Characterization of the normal human trabecular meshwork cells a. Representative phase-contrast images of pHTMC on confluent phase (x20), TMC culture presented a cobblestone-like pattern with some overlapping processes. b. pHTMC from different donors (1 P1, 7 P2, 5 P3) were stained for markers expressed by TMC: alpha-SMA (green), CD44 (green), CHI3L1 (green), AQP1 (red) c. Immunolabeling of alpha-SMA (green), and nuclei (DAPI in blue) with or without exposure to dexamethasone (DXM, 100nM) for 7 days on pHTMC. The actin cytoskeleton is rearranged and there is an increase in the expression of alpha-SMA after exposure to dexamethasone. Magnification 200X, scale bar = 30 μ m. d. Representative western blot of myocilin and β -actin and the densitometry analysis of myocilin normalized to β -actin showing dexamethasone (DXM)-induction of myocilin.