

Supplementary Figures and Tables

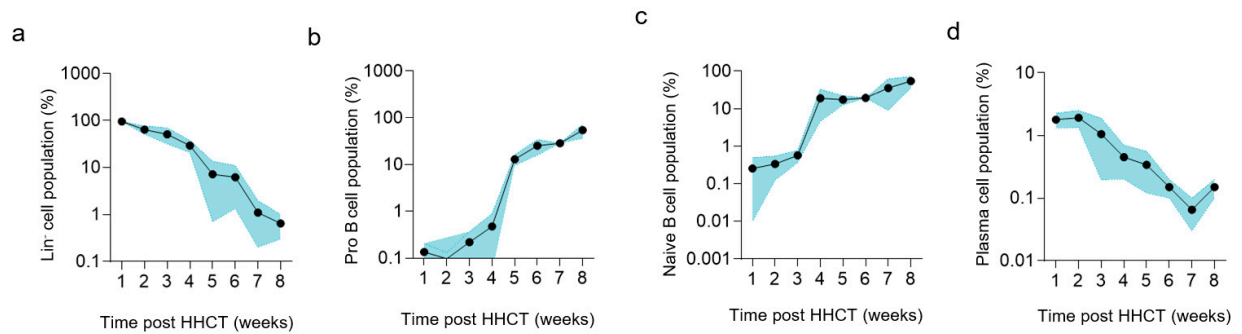


Figure S1: Immune reconstitution of Lin- (a), pro B cells (b), naïve B cells (c) and plasma cells (d) after HHCT. Lin = Lineage, HHCT = Haploidentical Hematopoietic Cell Transplantation,

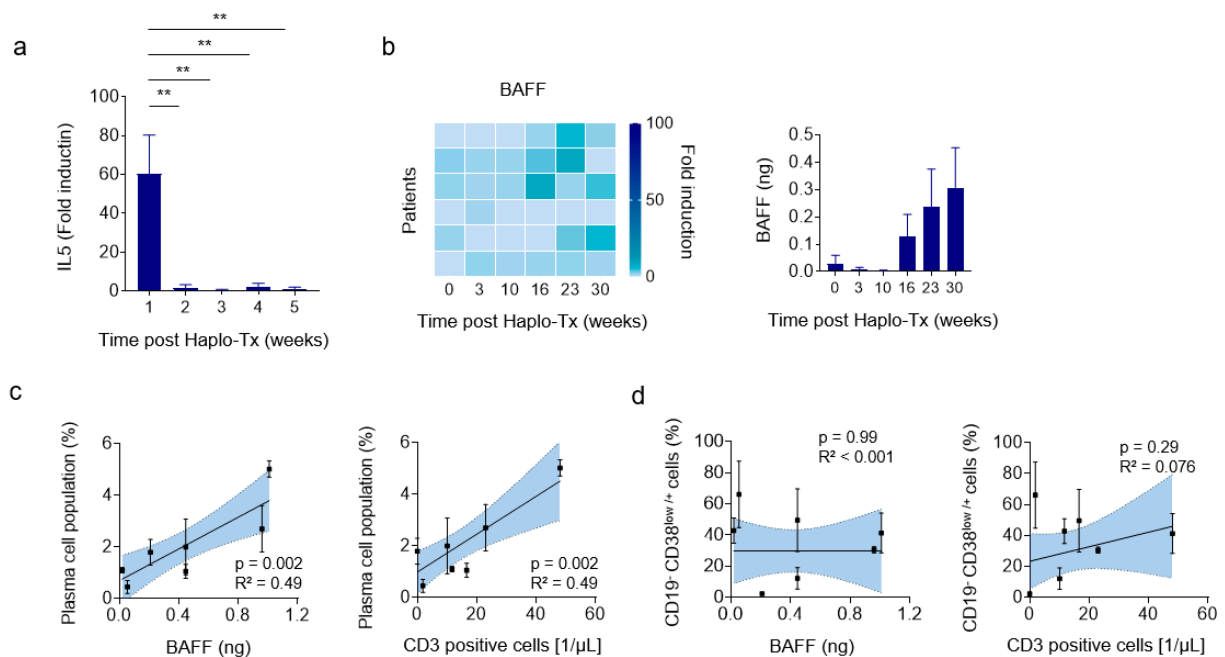


Figure S2: (a) Fold induction (referring to 5 healthy donors) of IL-5 1-5 weeks after HHCT. (b) Fold induction and serum concentration (ng) of BAFF after HHCT. (c) Correlation of BAFF or CD3 positive cells and plasma cells after HHCT. (d) Correlation of BAFF or CD3 positive cells and early ASC after HHCT. IL = Interleukin, BAFF = B-cell activating factor, CD = cluster of differentiation, ** < 0.01.

Table S1: Patients characteristics

Patient characteristics	Total (n=10)
Gender	
male sex, n (%)	3 (30)
Age	
Age at study inclusion in years, mean– yr.(95%CI)	42.6 ± 10.34 (25 to 57)
Diagnosis, n (%)	
Acute myeloid leukemia (AML)	9 (90)
Multiple myeloma (MM)	1 (10)
Stage at HCT, n (%)	
Complete Remission (CR)	3 (30)
Partial Remission (PR)	7 (70)
Engraftment	
ANC >500 cells/μl (days)	10 (9-13)
Acute GVHD, n (%)	4 (40)
Grade I°	2 (20)
Grade II°	1 (10)
Grade III°	1 (10)
Grade IV°	0
Relapse, n (%)	6 (60)
Patients still alive, n (%)	4 (40)

CI=confidence interval, HCT= Hematopoietic Cell Transplantation,
ANC= absolute neutrophil count, GVHD= Graft-versus-host disease,
n=number