

## Supplementary Information

### Interfacial Tailoring of Polyether Sulfone-Modified Silica Mixed Matrix Membranes for CO<sub>2</sub> Separation

Hafiz Abdul Mannan <sup>1,2</sup>, Alamin Idris <sup>3</sup>, Rizwan Nasir <sup>4</sup>, Hilmi Mukhtar <sup>1</sup>, Danial Qadir <sup>5</sup>, Humbul Suleman <sup>5,\*</sup>, Abdul Basit <sup>6</sup>

<sup>1</sup> Chemical Engineering Department, Universiti Teknologi PETRONAS, Bandar Seri Iskandar 32610, Perak, Malaysia

<sup>2</sup> Institute of Polymer and Textile Engineering, University of the Punjab, Lahore 54590, Pakistan

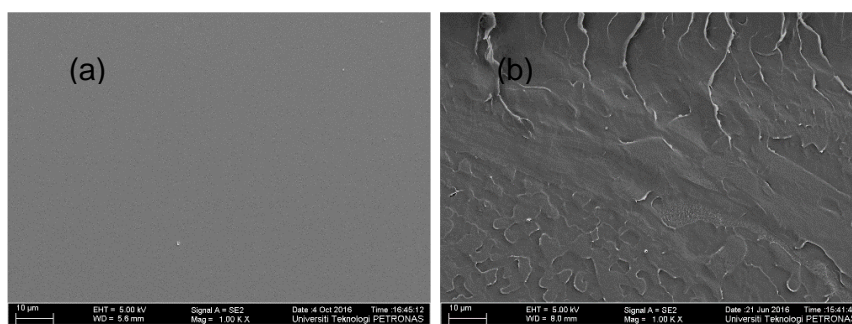
<sup>3</sup> Department of Natural Sciences, Mid Sweden University, Sundsvall 85230, Sweden

<sup>4</sup> Department of Chemical Engineering, University of Jeddah, Jeddah 23890, Saudi Arabia

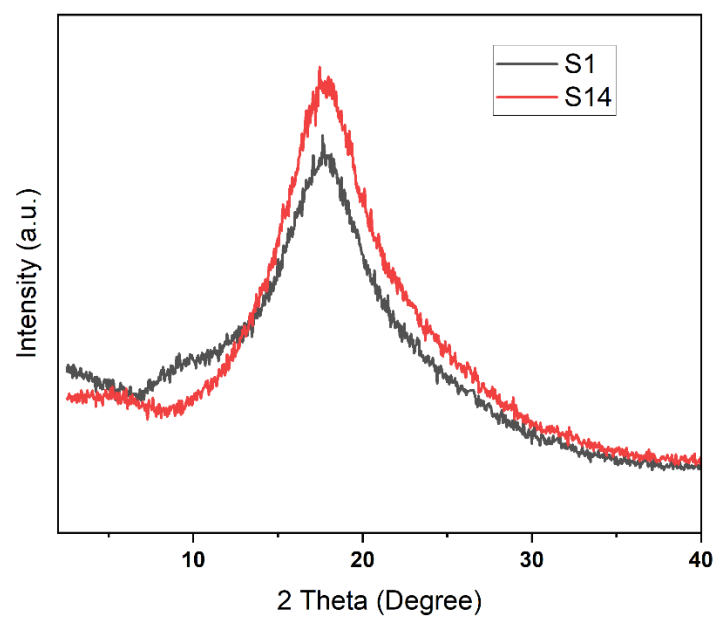
<sup>5</sup> School of Computing, Engineering and Digital Technologies, Teesside University, Middlesbrough TS1 3BX, UK

<sup>6</sup> Department of Chemical Engineering, University of Gujrat, Gujrat 50700, Pakistan

\* Correspondence h.suleman@tees.ac.uk



**Figure S1.** FESEM images of pure PES membrane (a) surface (b) cross section at 1000x.



**Figure S2.** XRD pattern of the synthesized MMMs.