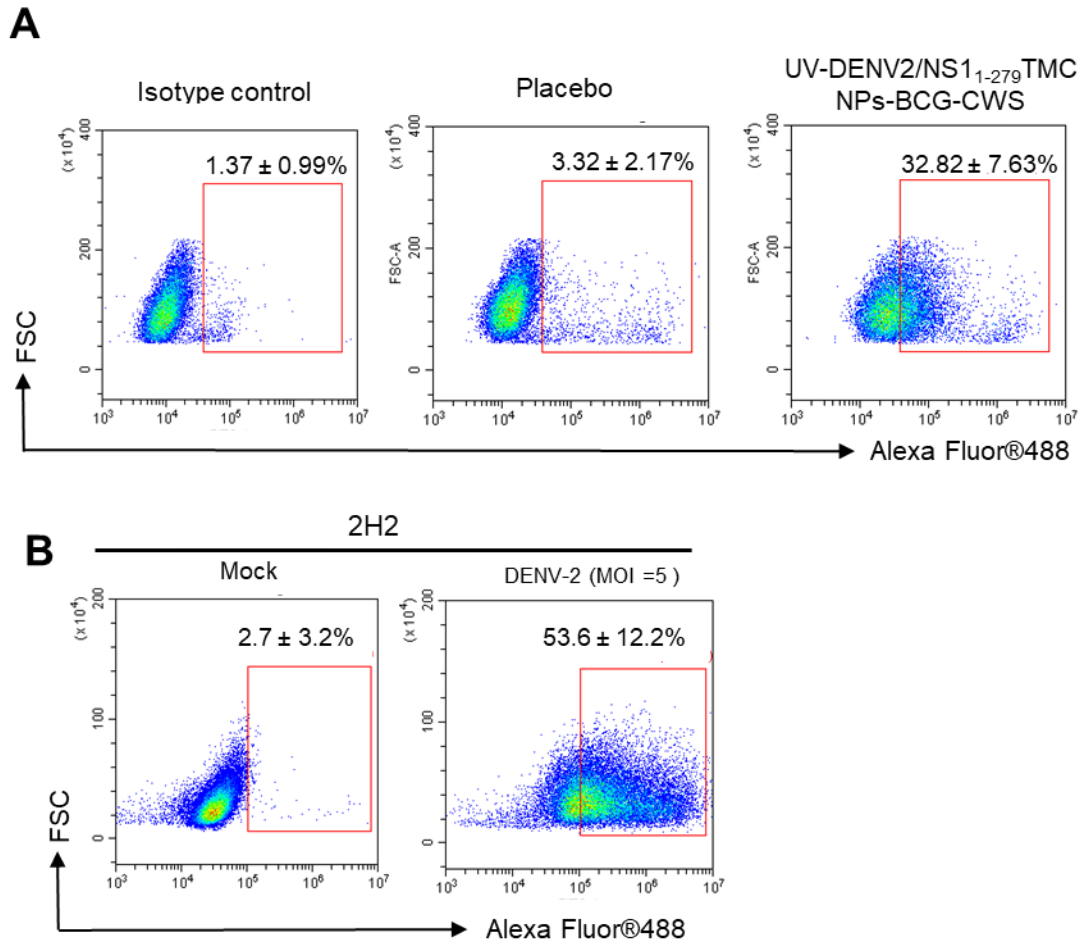


## Supplementary Figure S1



**Figure S1** Reactivity of immunized sera to the surface of DENV-2 infected cells. BHK-21 cells were infected with DENV-2 at MOI of 5. After 24 h post-infection, cells were surface stained with pooled mouse sera at 1:50 dilution (A). Intracellular staining with anti-DENV virus complex antibody (2H2) was performed to confirm DENV-2 infectivity (B). The stained cells were analyzed by flow cytometry. Data are shown as mean  $\pm$  SD (n=3).