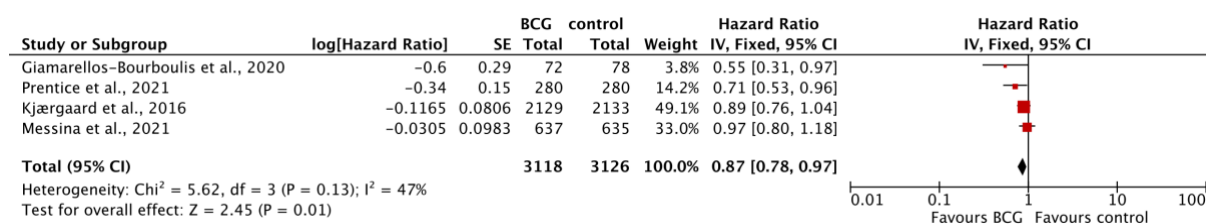
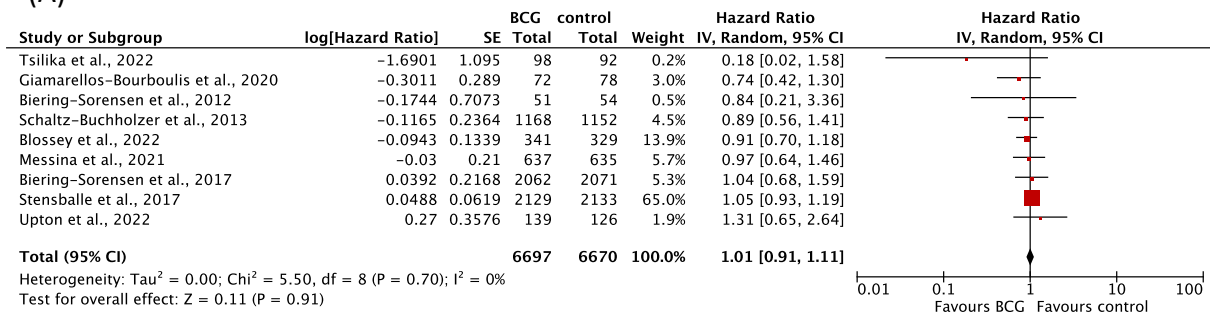


**Figure S1. Funnel plots of random-effects meta-analysis of BCG trials for outcomes with at least nine studies.** (A) Respiratory infections (B) All-cause mortality (C) All-cause hospitalization. SE = standard error

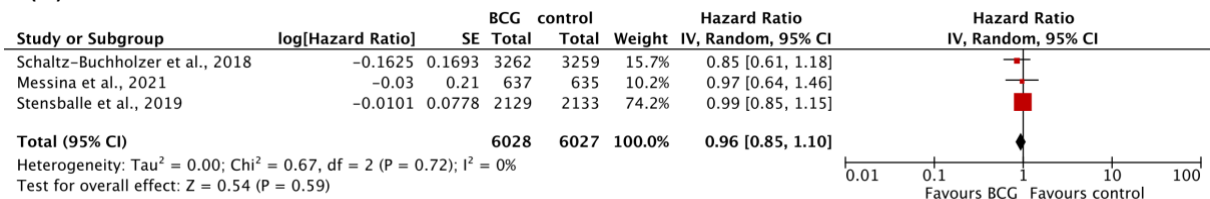


**Figure S2. Forest plot of fixed-effect meta-analysis of BCG trials for infections of any origin.** Solid squares represent hazard ratio estimates for the single studies. The size of the squares represents the weight assigned to the individual study in the meta-analysis and is proportional to the inverse variance (IV) of the estimate. Horizontal lines indicate 95% confidence intervals (CI). The diamond shows the 95% CI for the pooled hazard ratios. Values smaller than 1.0 indicate hazard ratios that favour BCG. BCG = Bacillus Calmette-Guérin, SE = standard error

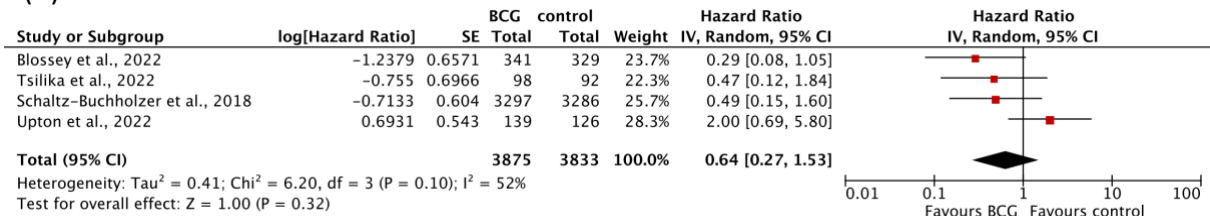
(A)



(B)



(C)



**Figure S3. Forest plots of random-effects meta-analysis of BCG trials for (A) hospitalization (B)**

**hospitalization for infections (C) hospitalization for respiratory infections.** Solid squares represent hazard ratio estimates for the single studies. The size of the squares represents the weight assigned to the individual study in the meta-analysis and is proportional to the inverse variance (IV) of the estimate. Horizontal lines indicate 95% confidence intervals (CI). The diamond shows the 95% CI for the pooled hazard ratios. Values smaller than 1.0 indicate hazard ratios that favour BCG. BCG = Bacillus Calmette-Guérin, SE = standard error