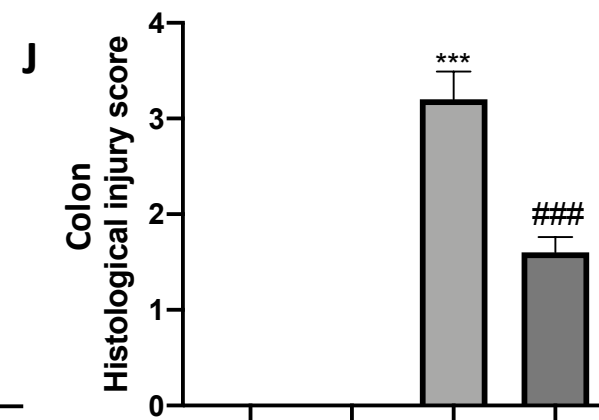
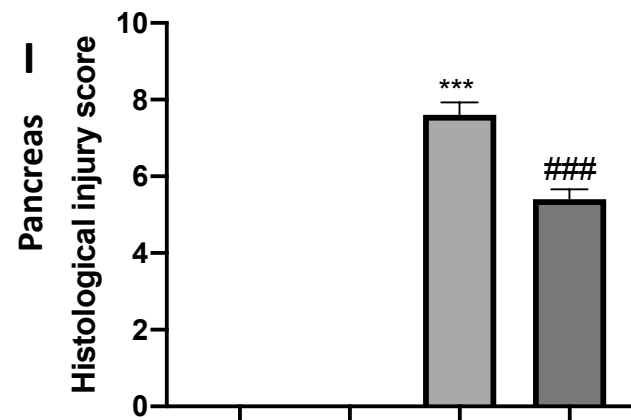
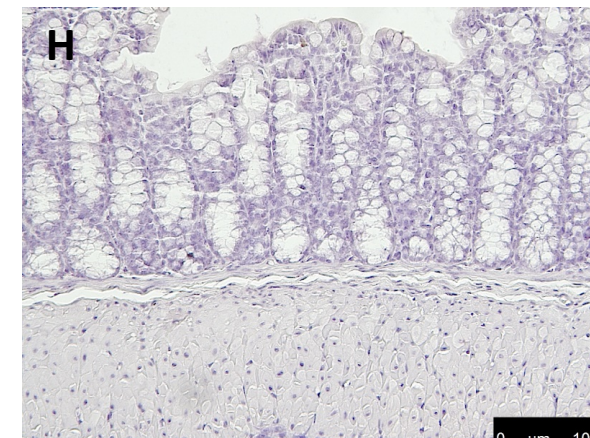
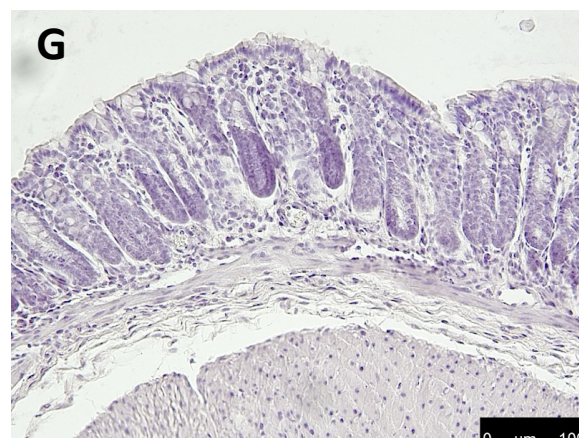
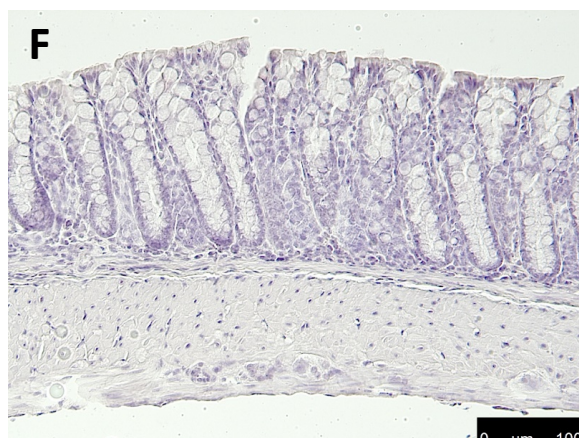
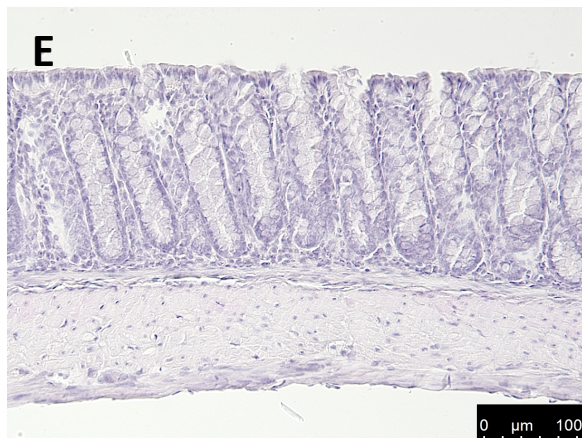
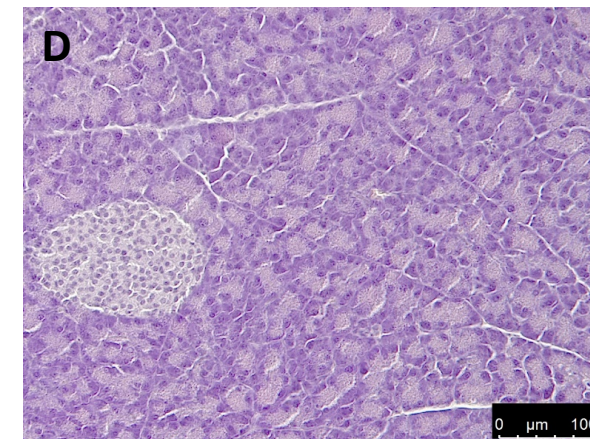
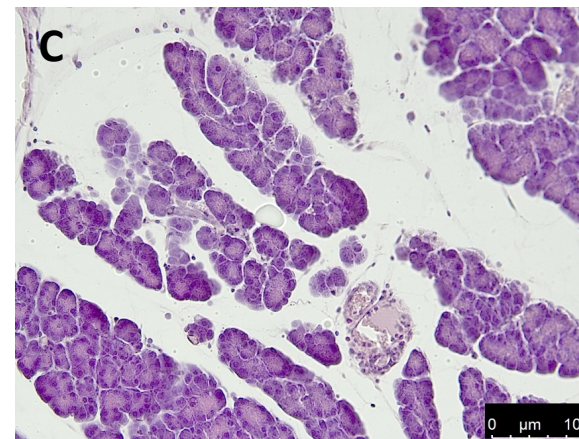
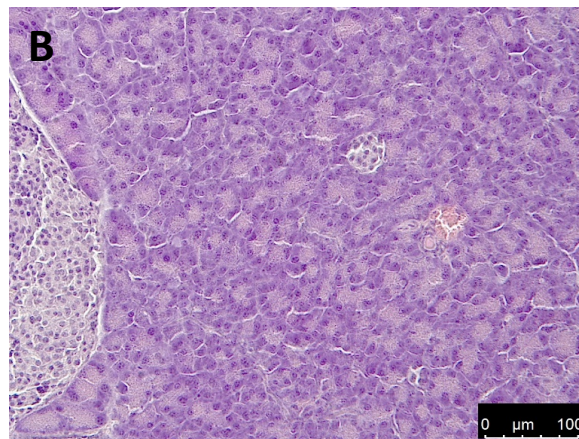
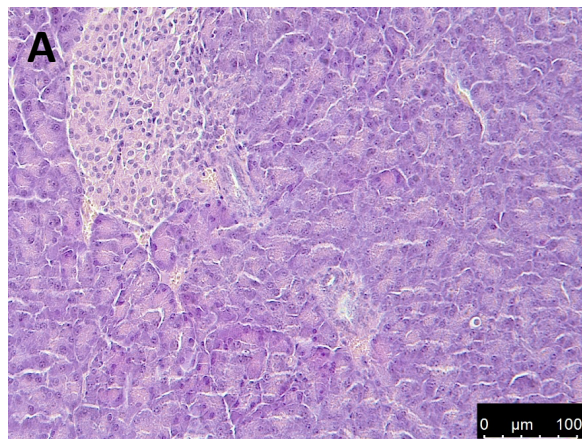


**Figure S1:** Haematoxylin and Eosin staining of pancreas and colon tissues: pancreas histological analysis: sham + vehicle (A), sham + hydroxytyrosol (HT) (B) caerulein + vehicle (C), caerulein + HT(D), histological injury score (I), colon histological analysis: sham + vehicle (E), sham + HT (F), caerulein + vehicle (G), caerulein + HT(H), histological injury score (J). For the analysis, n=5 animals from each group were employed. A p-value <0.05 was considered significant. \* p < 0.05 vs. sham, # p < 0.05 vs. vehicle, \*\* p < 0.01 vs. sham, ## p < 0.01 vs. vehicle, \*\*\* p < 0.001 vs. sham, ### p < 0.001 vs. vehicle.



- Sham + Vehicle
- Sham + HT
- Caerulein + Vehicle
- Caerulein + HT