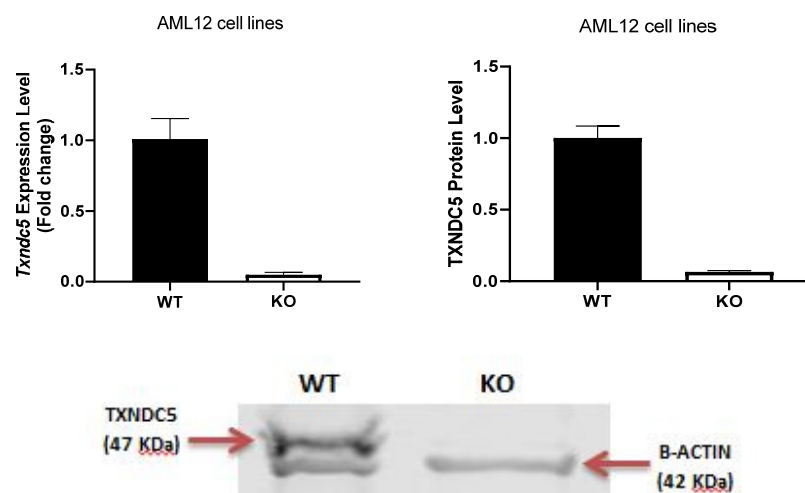


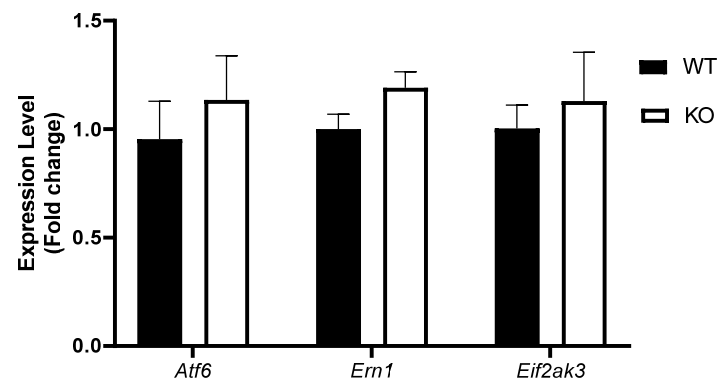
Supplementary Table S1. Sequences of real-time PCR primers according to MIQE guidelines
Abbreviations: *Ppib*, peptidylprolyl isomerase B; *Tbp*, TATA box binding protein; *Gpx4*, glutathione peroxidase 4;

Gene symbol	Accession	Primer sequence, sense/antisense (5'->3')	Amplicon length	Exon	Concentration	Efficiency
<i>Ppib</i>	NM_011149.2	GGAGATGGCACAGGAGGAA TAGTGCTTCAGCTTGAAGTTCTCAT	71	3/4	0.2 μ M	99%
<i>Tbp</i>	NM_013684.3	GTGAGTTGCTTGCTCTGTGC GCTGCGTTTTTGTGCAGAGT	359	8	0.2 μ M	104%
<i>Gpx4</i>	NM_008162.4 NM_001037741.4 NM_001367995.1	ATGGATGAAAGTCCAGCCCAAG CGGCAGGTCCTTCTCTATCAC	148	4/7	0.2 μ M	96%
<i>Eif2ak3</i>	NM_010121.3 XM_011241202.3 XM_006505501.2	TATGTTGGAAGGCTTGAGGTCC GTACATTCAGATGCAGCTGTGC	178	13/14	0.2 μ M	95%
<i>Atf6</i>	NM_001081304.1 XM_030253420.2 XM_011238796.4	GGTTCTTCCTCATGGACCAGAT ATAGGTCTGACTCCCAAGGCAT	170	1/3	0.2 μ M	102%
<i>Ern1</i>	NM_023913.2	AACAACCTGCCCAAACATCG TGGTCGGTGTGTTGTCTGAA	109	11/12	0.2 μ M	93%
<i>Txndc5</i>	NM_001289599.1 NM_001289598.1 NM_145367.4	CAGGCTTGTCAGATGTCACCAT TAACCTCGTACCGAGTACTTGCTG	82	9/10	0.2 μ M	92%

Eif2ak3, eukaryotic translation initiation factor 2 alpha kinase 3; *Atf6*, activating transcription factor 6; *Ern1*, endoplasmic reticulum (ER) to nucleus signaling 1; *Txndc5*, thioredoxin domain containing 5



Supplementary Figure S1. Characterization of AML12 cell lines. *Txndc5* mRNA and protein levels in normal mouse hepatocyte AML12 cells (wildtype (WT)) and TXNDC5-deficient AML12 cells (knockout (KO))



Supplementary Figure S2. The mRNA expressions of *Atf6*, *Ern1*, and *Eif2ak3* in WT and KO cells. Knockout of TXNDC5 increased the mRNA level of ER stress markers.