

Supplementary Materials

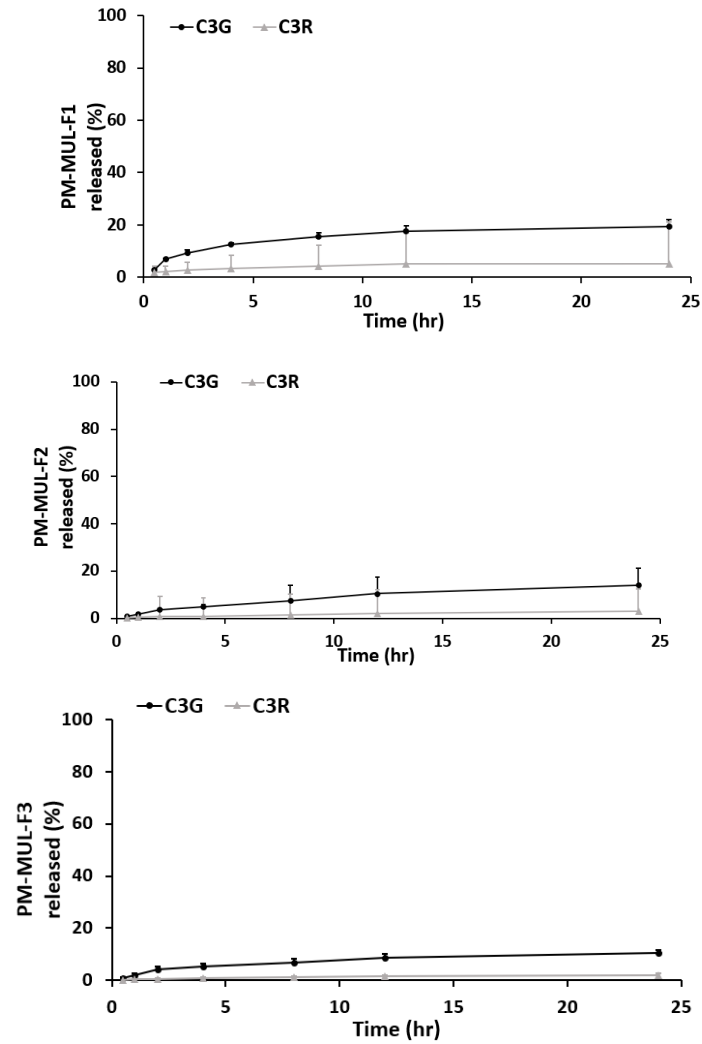


Figure S1. Release profile of ACN (C3G and C3R) from PM (physical mixture)-MUL-F1, F2, F3 in gastrointestinal tract simulation. SGF: simulated gastric fluid, from initial and 2 hr (0, 0.5, 1, and 2 hr), SIF: simulated intestinal fluid from 2 hr to 24 hr (4, 8, 12, and 24 hr).

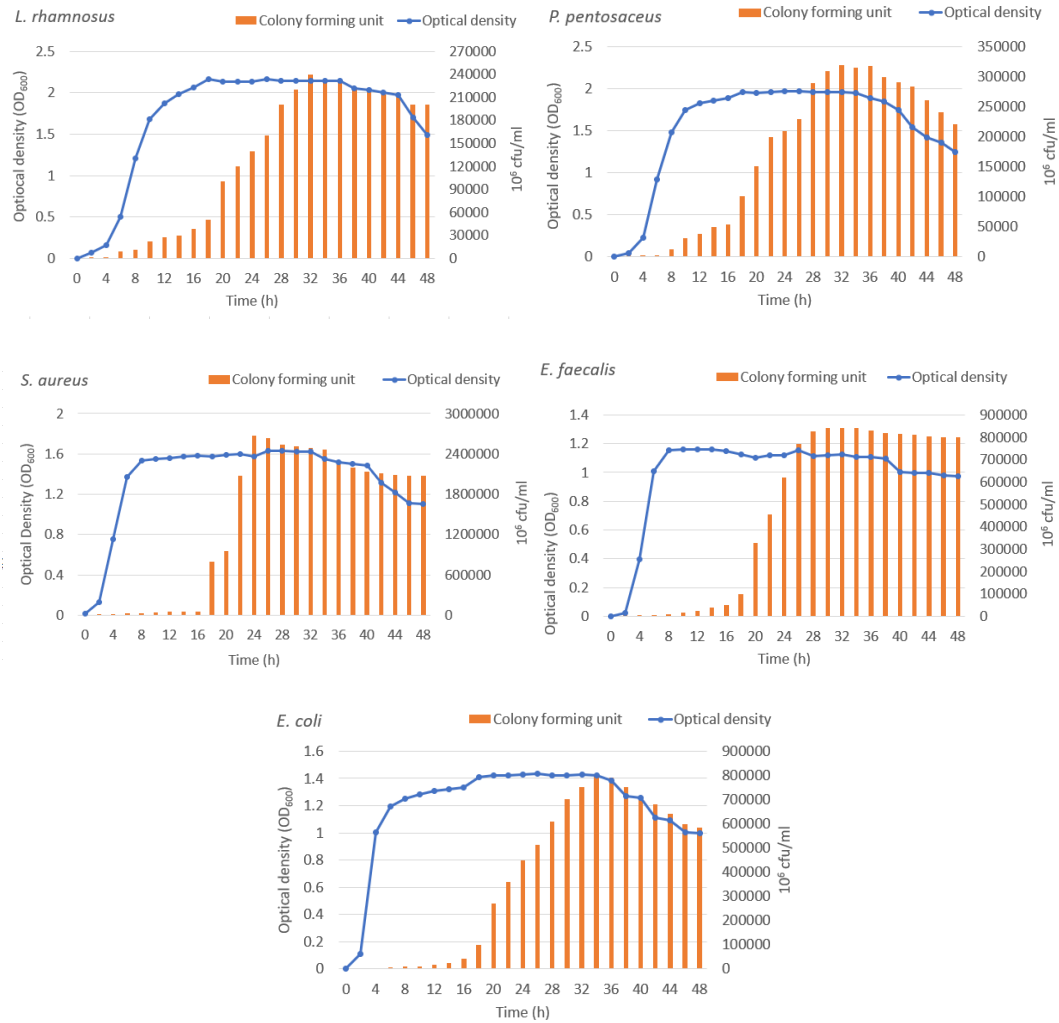


Figure S2. Lactic acid bacteria and pathogen bacterial growths characteristics of *L. rhamnosus*, *P. pentosaceus*, *S. aureus*, *E. faecalis*, and *E. coli* with correlation of optical density (OD₆₀₀) and colony forming unit.