

Figure S1. Gorilla analysis. Biological process pathways affected by SOD3 in TPC1 cells modeling papillary thyroid cancer.

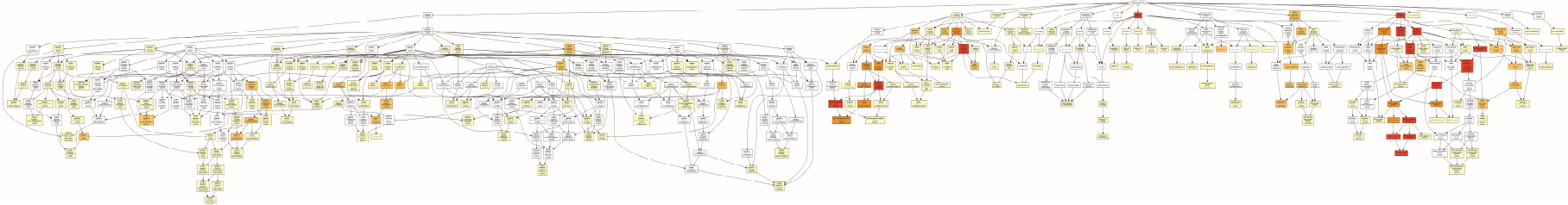


Figure S2. Gorilla analysis. Biological process pathways affected by SOD3 in 8505c cells modeling anaplastic thyroid cancer.

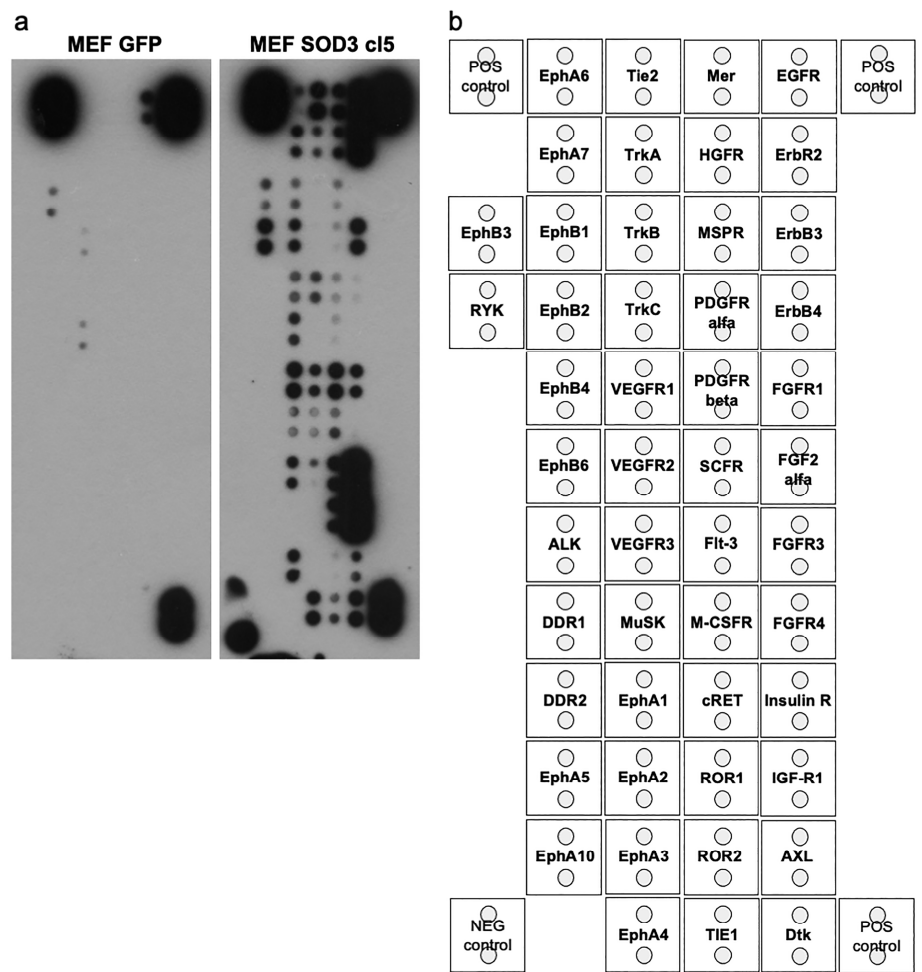


Figure S3. RTK array. a. Protoarray long exposure for MEF GFP and MEF SOD3 cl5. b. The locations of the signaling molecules on the membrane.

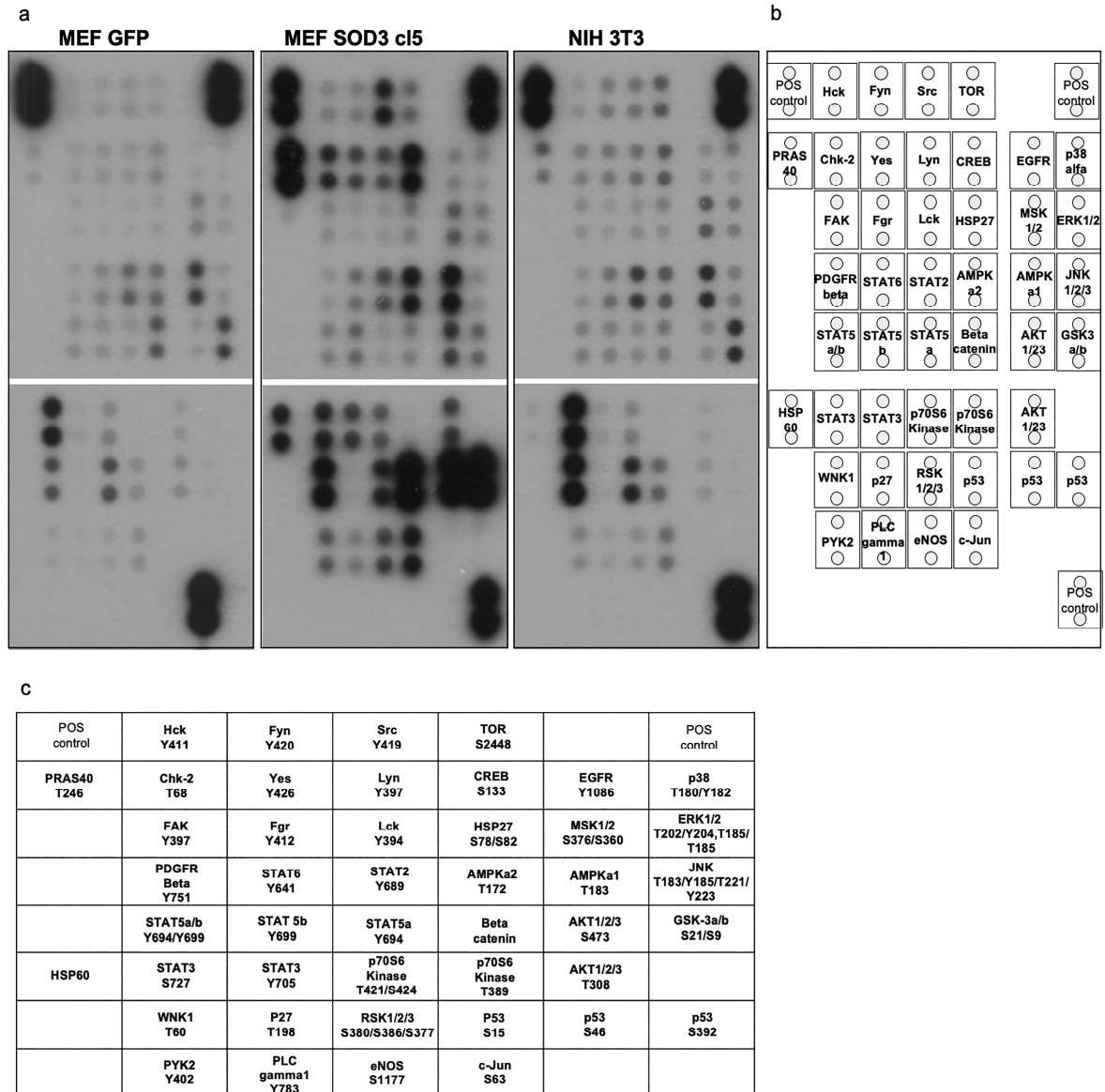


Figure S4. RTK array. a. Protoarray long exposure for MEF GFP, MEF SOD3 c15, and NIH3T3 cells. b. The location of the signaling molecules on the membrane. c. Table showing the phosphorylation site in the kinases.

Table S1. PCR primers that were used in the expression analysis.

huDNA lig-I For	GCT TCC ACC GAT TCC TCC TC
huDNA lig-I Rev	GAG CAC ACT GGG AAA ATG CC
huDNA lig-III For	GCC GGA GAG GCA GCT ATA TG
huDNA lig-III Rev	CAC GCC AGT GAT GTT TTC GG
huMPG For	GCC CAT ACC GCA GCA TCT AT
huMPG Rev	CCT CGG AGT TCT GTG CCA TT
huUNG For	CTC ATA AGG AGC GAG GCT GG
huUNG Rev	AGG GAT GAG CCG TCT GTA GT
huOGG1 For	AGG AAA GCC GGA GAA TTG GG
huOGG1 Rev	GAC GAG GAC CAC GAC CCT TA
huNTH1 For	GGA CAG TGA GAA AGG TGA GGC T
huNTH1 Rev	GTC CAC AGG TGC ATC CTT TTT G
huNEIL1 For	GTC ACT CAG TGC CCA AGG AA
huNEIL1 Rev	CCT GGA ACC AGA TGG TAC GG
huNEIL2 For	ATG GGT TAC AGA GGC TCA CCT
huNEIL2 Rev	AGA CGT CAG GTT CCC CAA CG
huNEIL3 For	TGG AAG TGC AGC TCA CCA AA
huNEIL3 Rev	AGC ACA TCA CCT AGC ATC CG
huTDG For	CTC TGG GGT TGT CTT ACC GC
huTDG Rev	CTG AAG GGA ATA GCT GCC CG
huMBD4 For	GCG CTT TCG CAA CAT TCA GA
huMBD4 Rev	CCC CAG ACT CAG ACT CTC CA
huSMUG1 For	TAA ACG ACC AGT GCT GGG AC
huSMUG1 Rev	AGC CAG GTC TTC TGA CTT GC
huACTIN For	TGC GTG ACA TTA AGG AGA AG
huACTIN Rev	GCT CGT AGC TCT TCT CCA