

Fig. S1

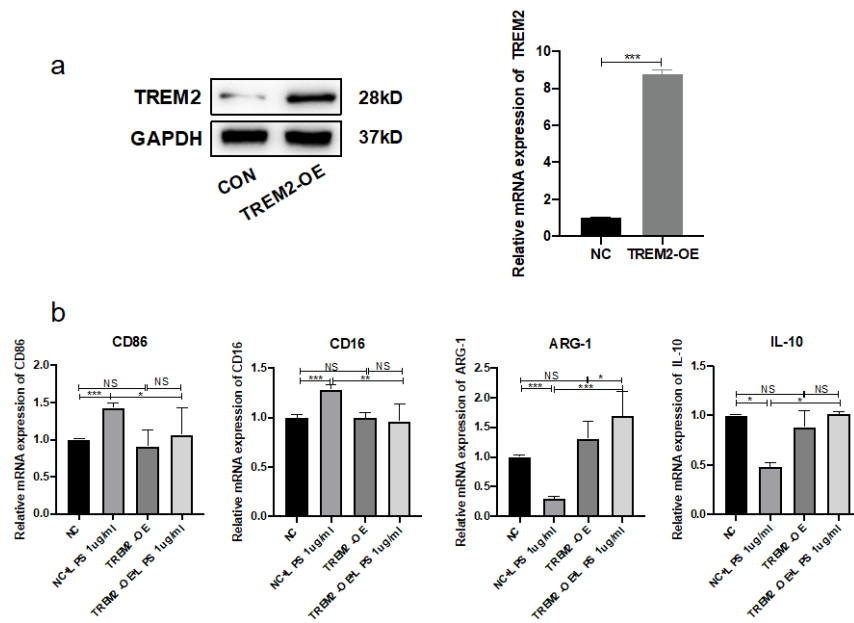


Figure S1 Polarization of microglia overexpressing TREM2 after LPS treatment

A. Protein and mRNA Expression of in TREM2-OE BV-2 cell.

B. mRNA expression of M1-type microglia markers (CD16 and CD86) and M2-type microglia markers (Arg-1 and IL-10) after 24h treatment of TREM2-OE and NC cells with different concentrations of LPS by PCR.

Fig. S2

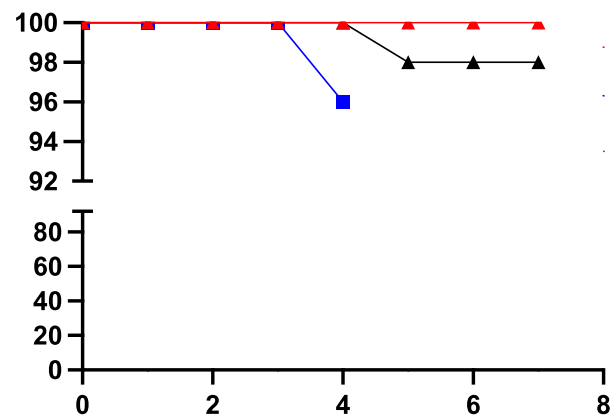


Figure S2. Survival of each group of mice

Fig. S3

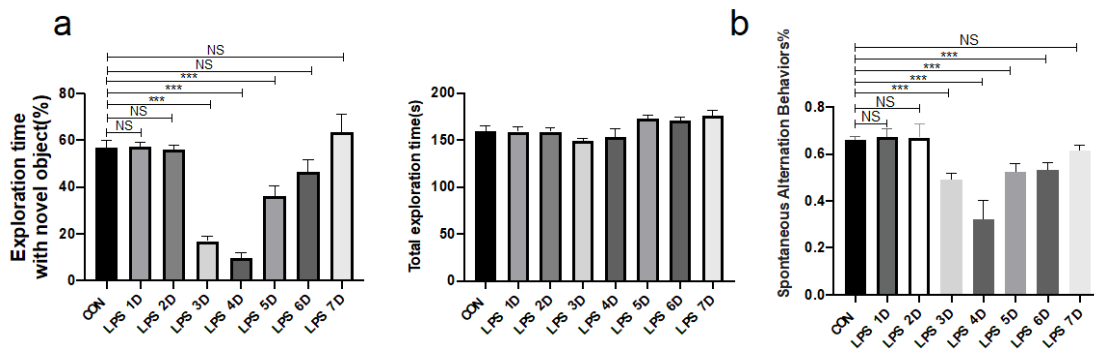


Figure. S3 Behavior of each group of mice

- A. Total and percentage of detection time of new objects in each group of mice.
- B. Percentage of mice in each group entering the different arms of the Y-maze in sequence.