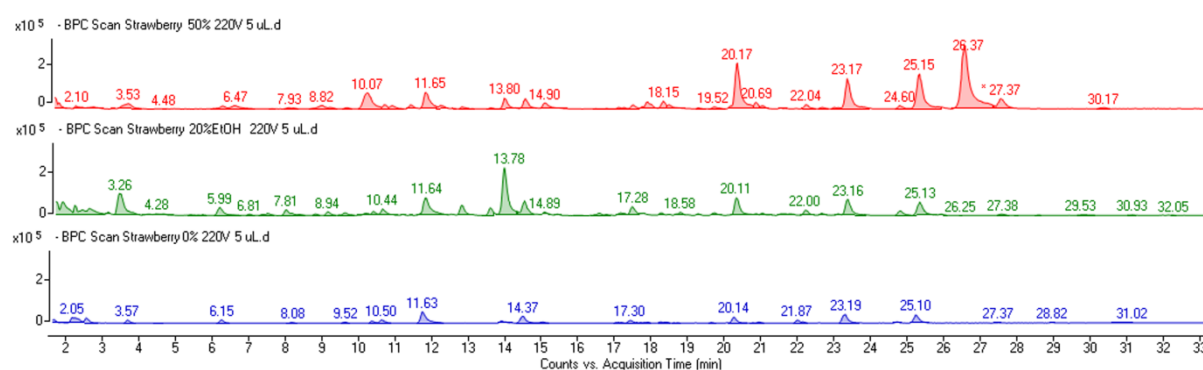
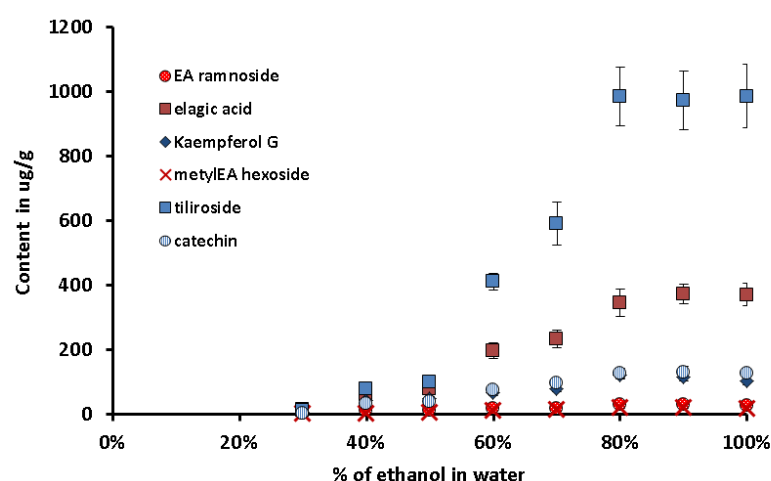


**Figure S1.** BPC chromatograms of extracts obtained during subsequent extraction steps. I – extraction with 60% ethanol, II- extraction with 80% ethanol, III- extraction with 100% ethanol, IV- repeated extraction with 100% ethanol.



**Figure S2.** BPC chromatograms of extracts obtained during ultrasound assisted extraction using water (blue), 20% ethanol in water (green) and 50% ethanol in water (red).



**Figure S3.** Effectiveness of isolating a specific component using ultrasonic-assisted extraction with increased ethanol concentration.