

Supplementary Information

Table S1: Primer sequences used in this study

Gene	Sequence (5'-3')
ITS2	F-ATGCGATACTTGGTGTGAAT
	R-GACGCTTCTCCAGACTACAAT
matK	F-CGTACAGTACTTTTGTGTTTACGAG
	R-ACCCAGTCCATCTGGAAATCTTGGTTC
psbA-trnH	F-GTTATGCATGAACGTAATGCTC
	R-CGCGCATGGTGGATTCAACAATCC

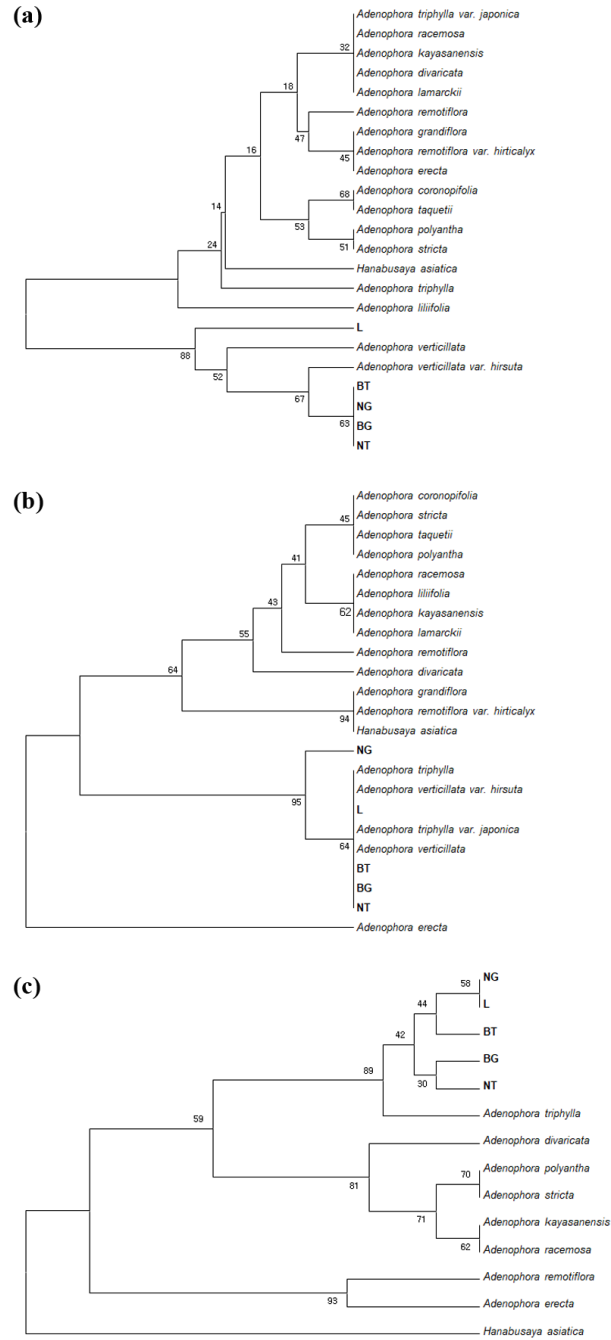


Figure S1. Phylogenetic analyses of *A. triphylla* genotypes based on the nucleotide sequences of ITS2 region (a), matK region (b), and psbA-trnH region (c).