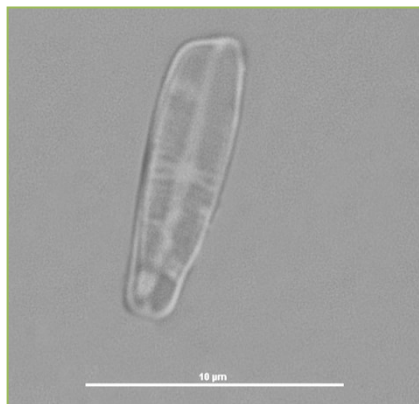
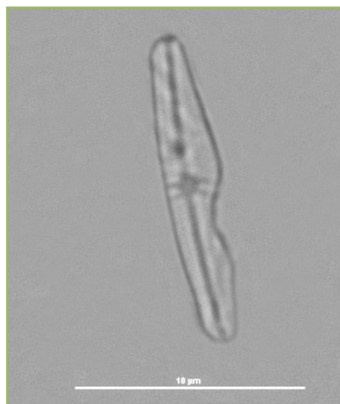


Figure S2. Teratological forms observed for *Achnantheidium minutissimum*, *Cocconeis euglypta*, *Cymbopleura yateana*, *Fistulifera saprophila*, *Gomphonema* spp., *Meridion circulare*, *Navicula* spp., *Navicula tripunctata*, *Nitzschia acidoclinata*, *Nitzschia supralitorea*, *Stauroneis reichardtii*, *Staurosira venter*, Birafidea.

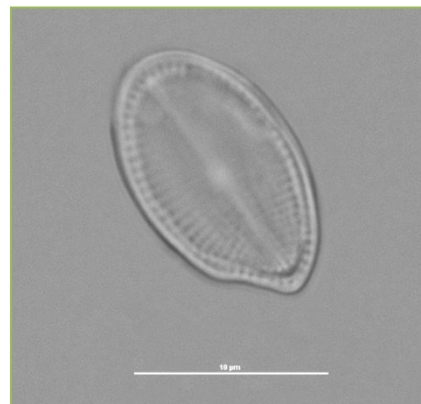
Achnantheidium minutissimum



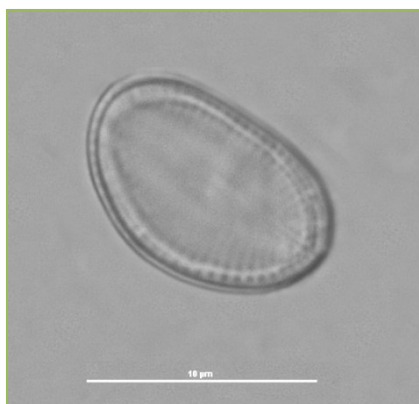
Achnantheidium minutissimum



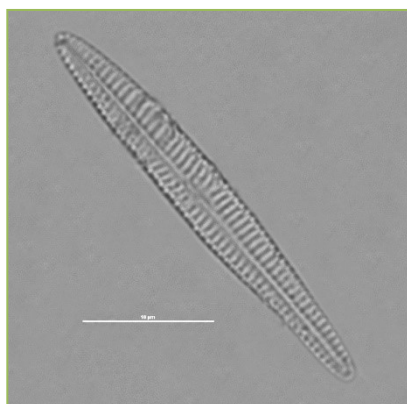
Cocconeis euglypta



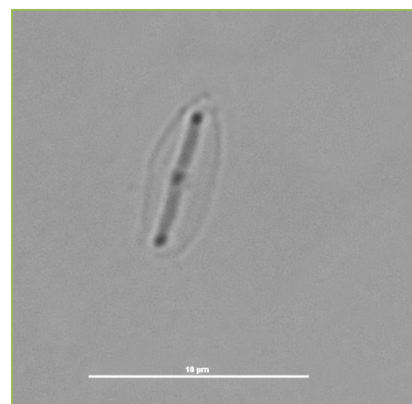
Cocconeis euglypta



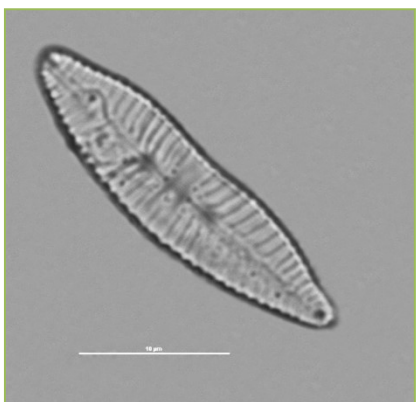
Cymbopleura yateana



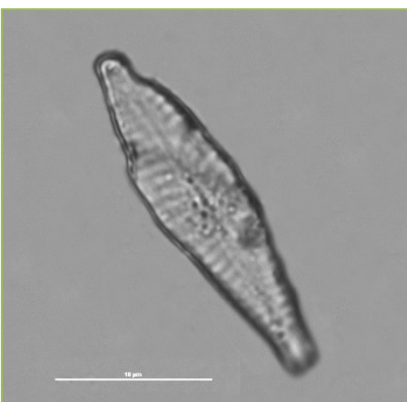
Fistulifera saprophila



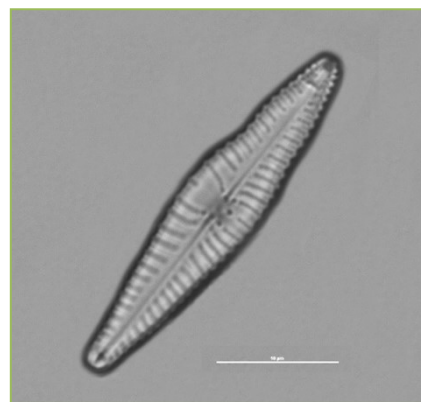
Gomphonema sp.1



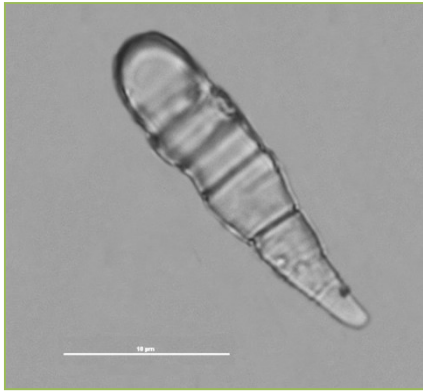
Gomphonema sp.2



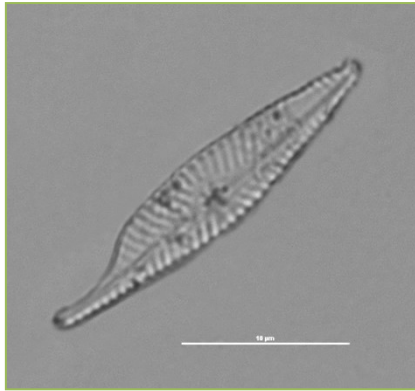
Gomphonema sp.3



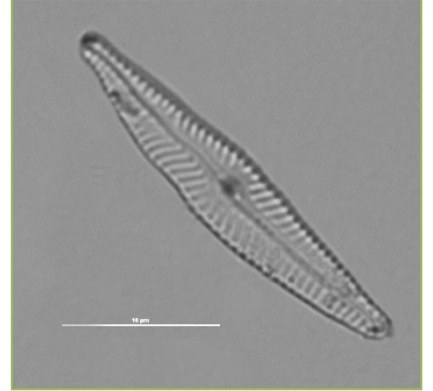
Meridion circulare



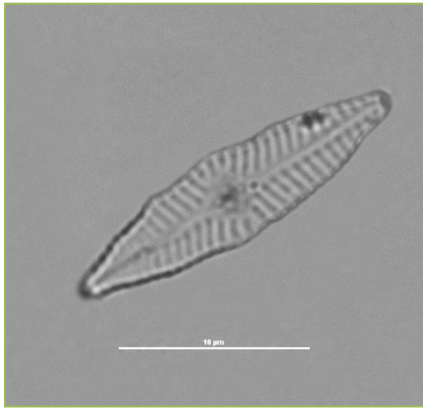
Navicula sp.1



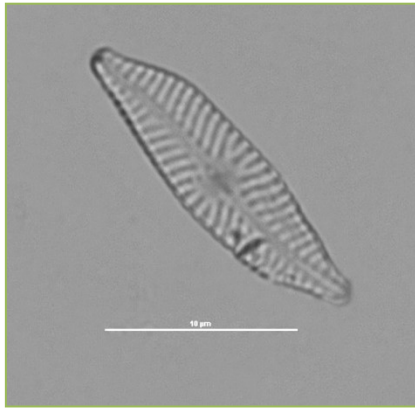
Navicula sp.1



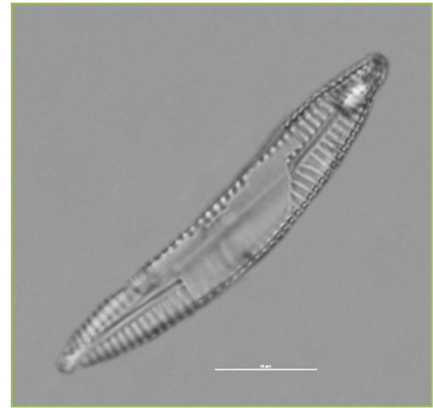
Navicula sp.2



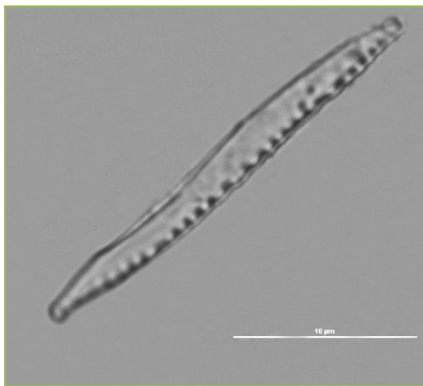
Navicula sp.2



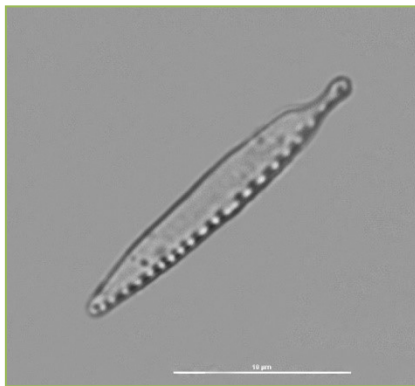
Navicula tripunctata



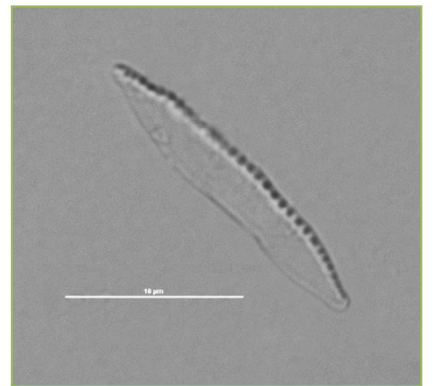
Nitzschia acidoclinata



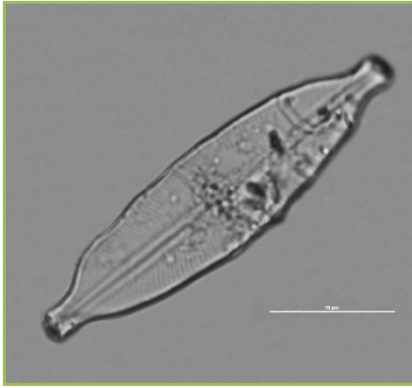
Nitzschia acidoclinata



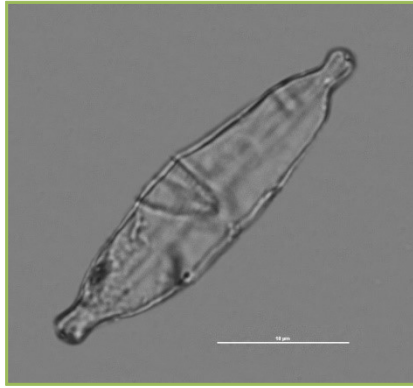
Nitzschia supralitorea



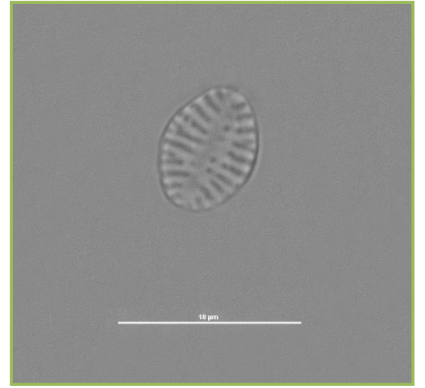
Stauroneis reichardtii



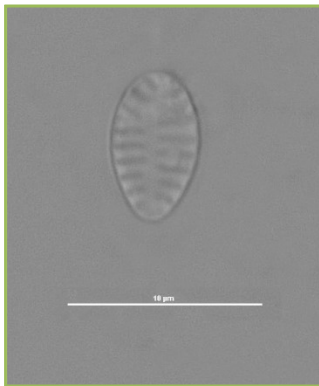
Stauroneis reichardtii



Staurosira venter



Staurosira venter



Birafidea

