

Atmospheric Dynamics from Synoptic to Local Scale During an Intense Frontal Dust Storm over the Sistan Basin in Winter 2019

Supplementary Figures

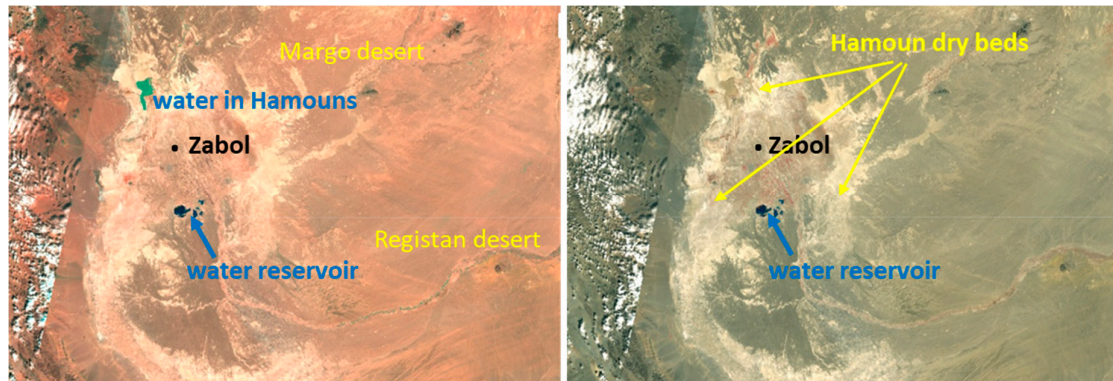


Figure S1: Sentinel imagery on 7 February 2019 over the Sistan Basin at 10 m spatial resolution. Left image corresponds to the bands 11, 4, 3 and the right one is composite of the bands 8, 4, 3, revealing vegetation in red around Zabol. Left image shows the water coverage in the Hamoun ephemeral lakes.

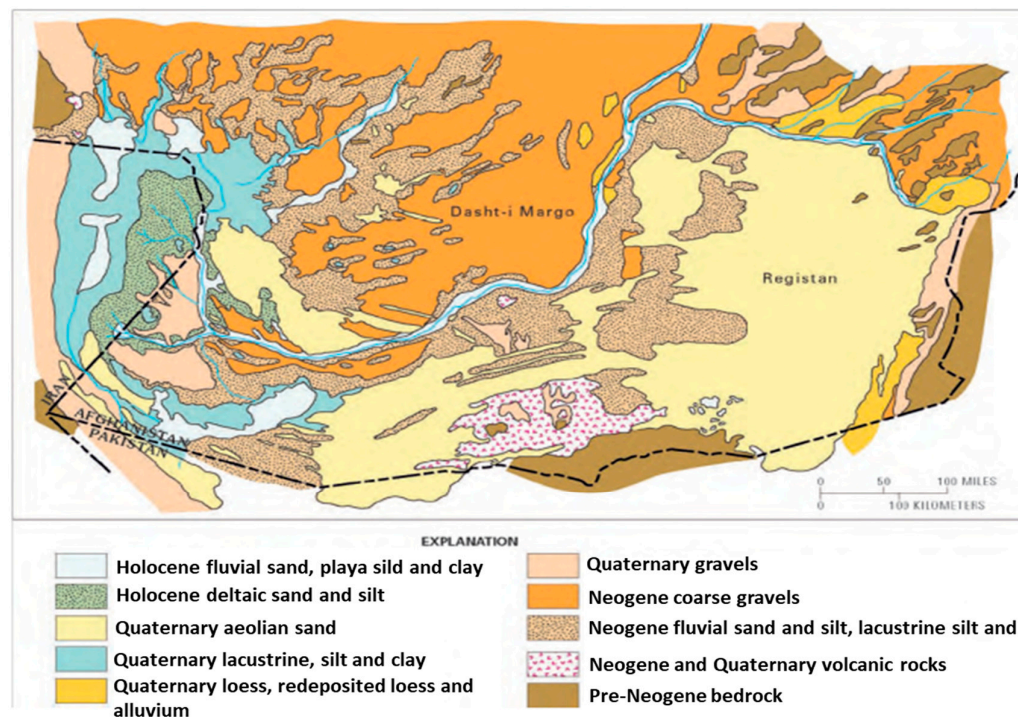


Figure S2: Geological map of the Sistan Basin. Source [British Geological Survey; <http://bgs.ac.uk/>].

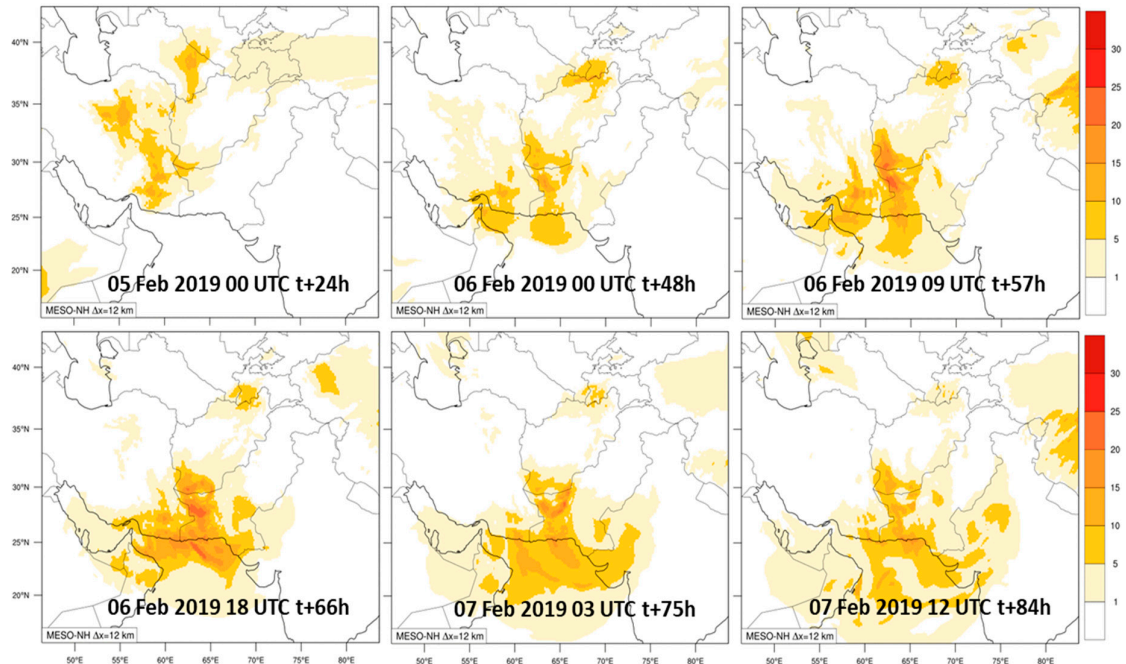


Figure S3: Spatial distribution of the accumulated dust loading (gm⁻²) simulated by Meso-NH for certain hours during 5-7 February 2019 over southwest Asia.