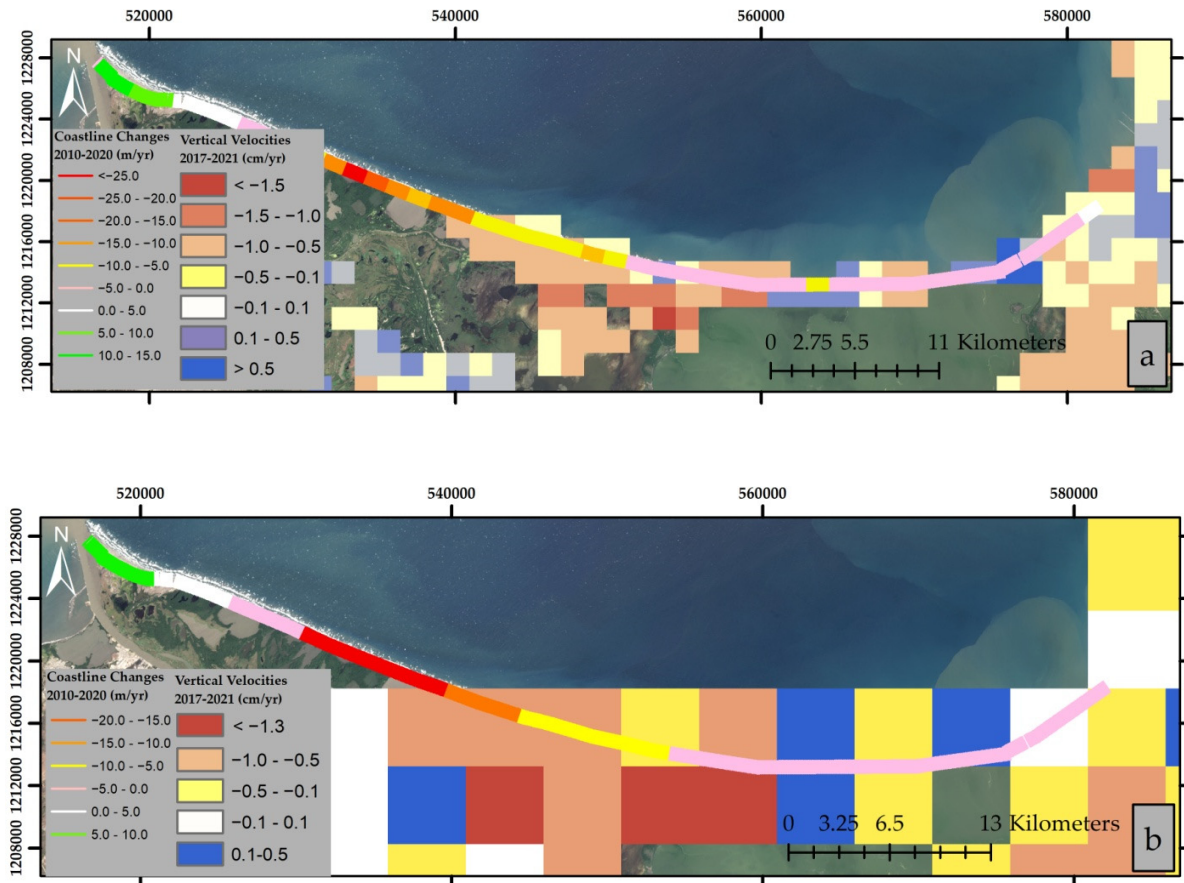


Supplementary Materials

By averaging the 100 m pixels and transects shown in Figure 5 of the manuscript, the VLM and coastline change velocities were aggregated in 1.5 and 5 km sections.



S1. VLM rates for 2017-2021 as derived from Sentinel 1A/B data and coastline changes for 2010-2020. Data was aggregated in (a) 1.5-km and (b) 5.0-km sections.