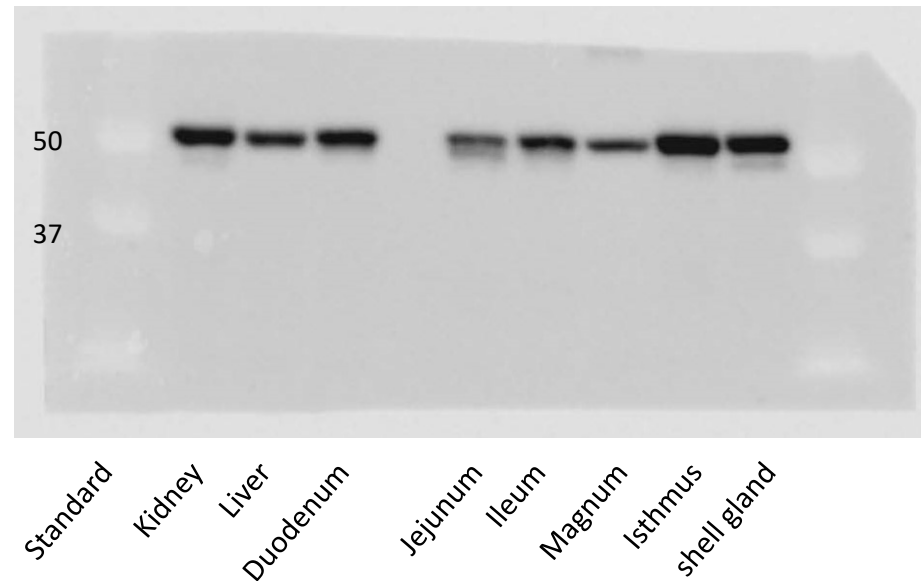


The Original PVDF membranes of western blotting analysis for megalin (Meg) and tubulin (Tubulin) proteins (manuscript Figure 3A). PVDF membrane was cut at approximately 100 kDa; the upper membrane was used for Meg chemiluminescence detection, and the lower membrane was used for tubulin chemiluminescence detection. White incident light figures of Precision Plus Protein Dual Color standard (Bio-Rad) were overlaid on the Meg and tubulin figures.

CUB
460kDa



Tubulin
52kDa



The Original PVDF membranes of western blotting analysis for cubilin (CUB) and tubulin (Tubulin) proteins (manuscript Figure 3B). PVDF membrane was cut at approximately 75 kDa; the upper membrane was used for CUB chemiluminescence detection, and the lower membrane was used for tubulin chemiluminescence detection. White incident light figures of Precision Plus Protein Dual Color standard (Bio-Rad) were overlaid on the CUB and tubulin figures.