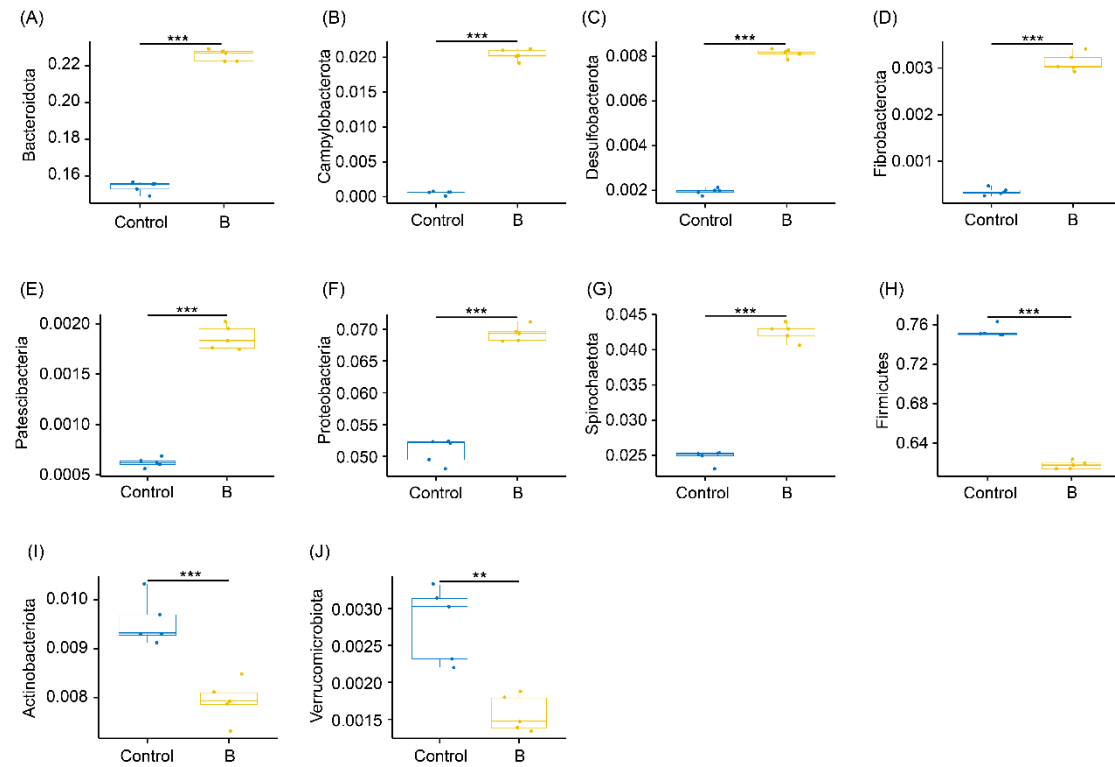
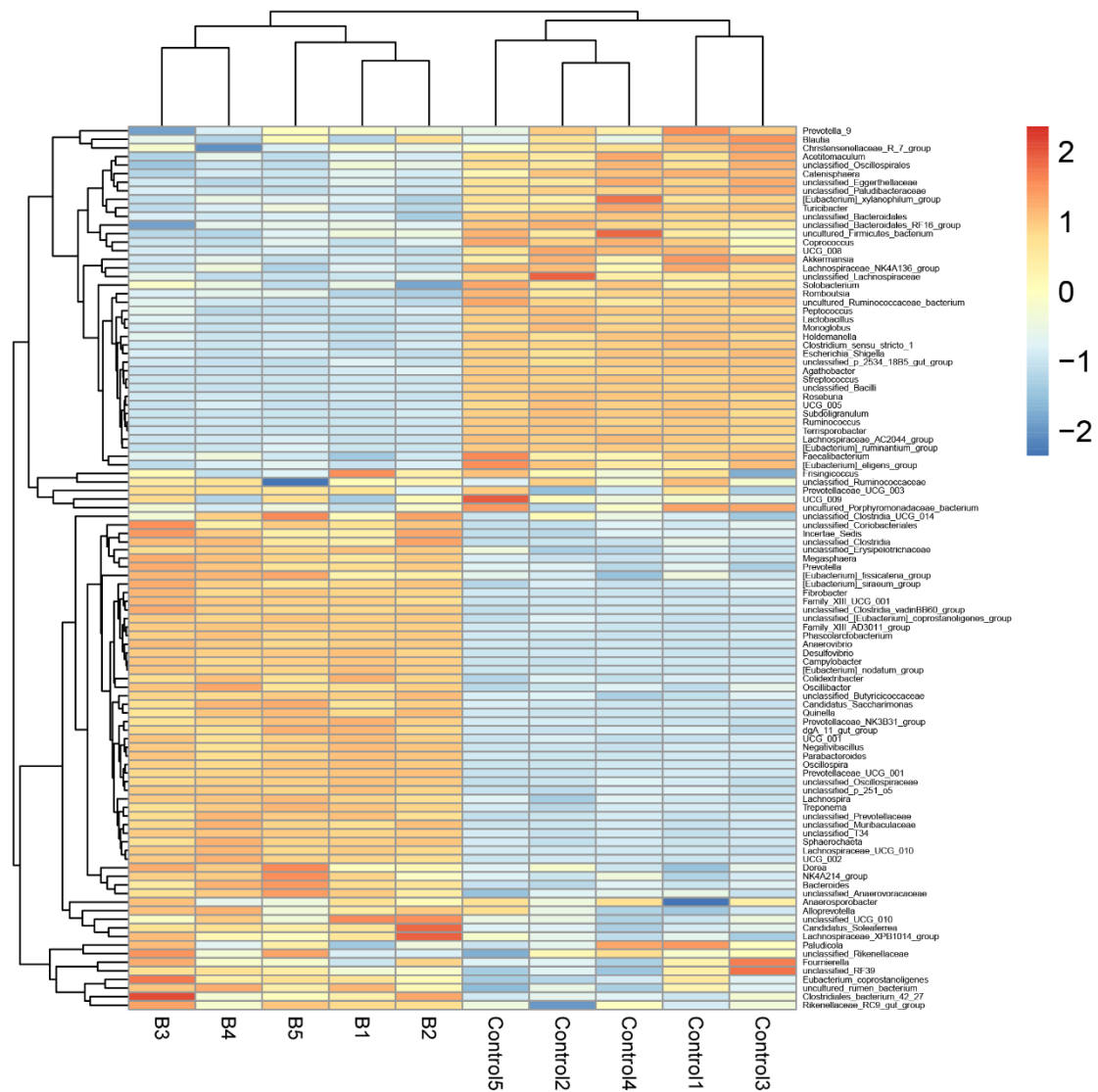


## Supplementary Materials



**Figure S1.** Relative abundances of dominant phyla in the colonic microbiota of growing pigs. (A) Bacteroidia; (B) Campylobacterota; (C) Desulfobacterota; (D) Fibrobacterota; (E) Patescibacteria; (F) Proteobacteria; (G) Spirochaetota; (H) Firmicutes; (I) Actinobacteriota; (J) Verrucomicrobiota. Pigs in the control group were fed basal diet, and the diet of group B was the basal diet with 2% FCHs. \*\*  $p < 0.01$ ; \*\*\*  $p < 0.001$ .



**Figure S2.** Heatmap profile showing the dominant genera in the colon microbiota. Pigs in the control group were fed basal diet, and the diet of group B was the basal diet with 2% FCHs.

