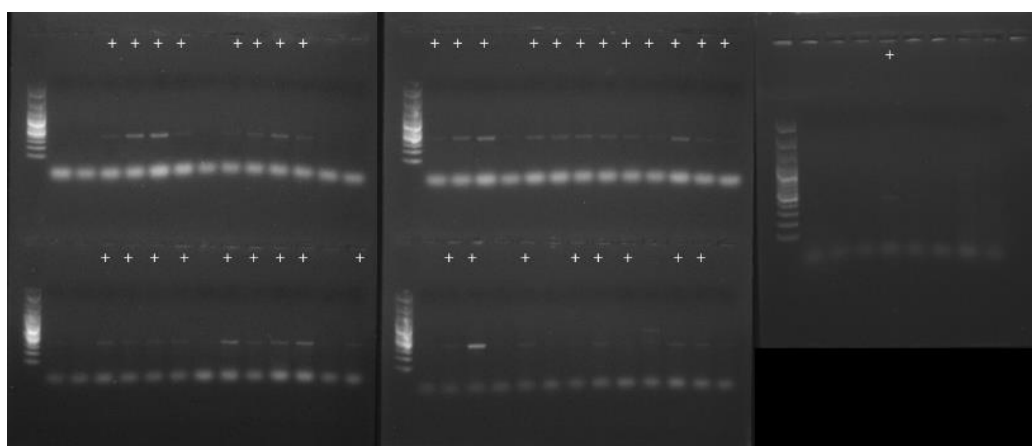
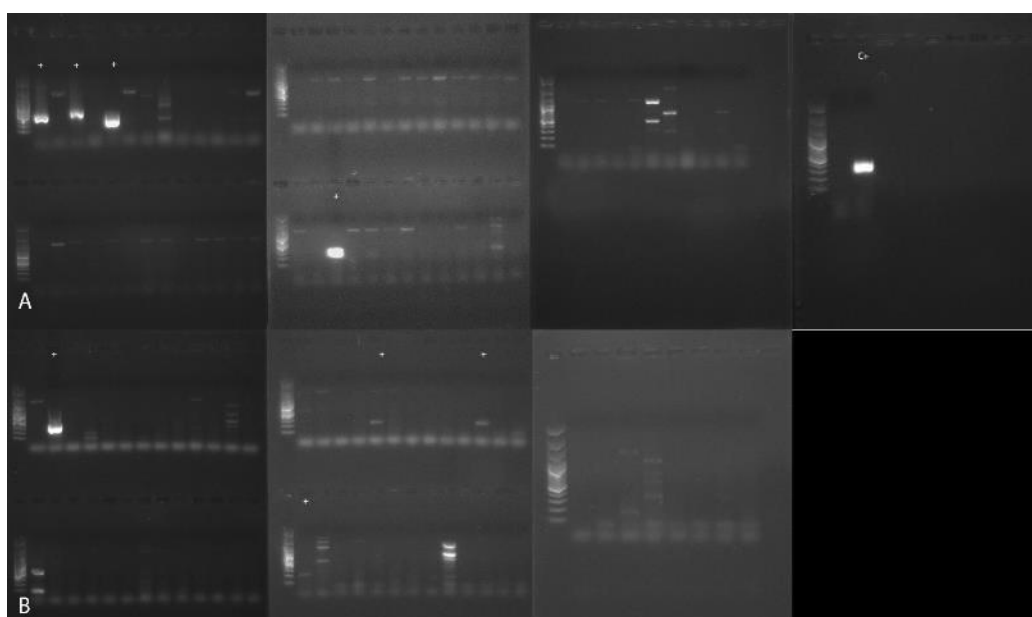


**Figure S1.** Gel electrophoresis following triplicate PCR for *bla<sub>KPC</sub>*, *bla<sub>NDM</sub>*, *bla<sub>OXA48-like</sub>*; showing positive bands for *bla<sub>OXA48-like</sub>* and *bla<sub>NDM</sub>* genes for the isolates 59 and 60 are marked with “+”, corresponding to approximately 438 bp, respectively 621 bp; (C+) positive control.



**Figure S2.** Gel electrophoresis following PCR for *bla<sub>GES-2</sub>*; positive strains are marked with “+”, corresponding to 371 bp.



**Figure S3.** Gel electrophoresis following PCR for *bla<sub>VIM</sub>* (A) and *bla<sub>SPM</sub>* (B); positive strains are marked with “+”, corresponding to 271 bp for *bla<sub>SPM</sub>* and 390 for *bla<sub>VIM</sub>*.