

Supplementary material

Supplementary Table S1. Completely randomized design (CRD) Showing a total of six treatments, each with five replicates.

No.	Treatments	Replicates
1	SOIL (YK10-T)	YK10-T-1, YK10-T-2, YK10-T-5, YK10-T-7, YK10-T-8
2	TEA LEAF (YK10-Y)	YK10-Y-3, YK10-Y-5, YK10-Y-7, YK10-Y-9, YK10-Y-10
3	Larval intestine (YK10-3)	YK10-3-1, YK10-3-2, YK10-3-3, YK10-3-4, YK10-3-5
4	Pupal intestinal tract (YK10-5)	YK10-5-1, YK10-5-2, YK10-5-3, YK10-5-4, YK10-5-5
5	Female moth intestine (YK10-C), (1-5)	YK10-C-1, YK10-C-2, YK10-C-3, YK10-C-4, YK10-C-5
6	Male moth intestine (YK10-C), (6-10)	YK10-C-6, YK10-C-7, YK10-C-8, YK10-C-9, YK10-C-10

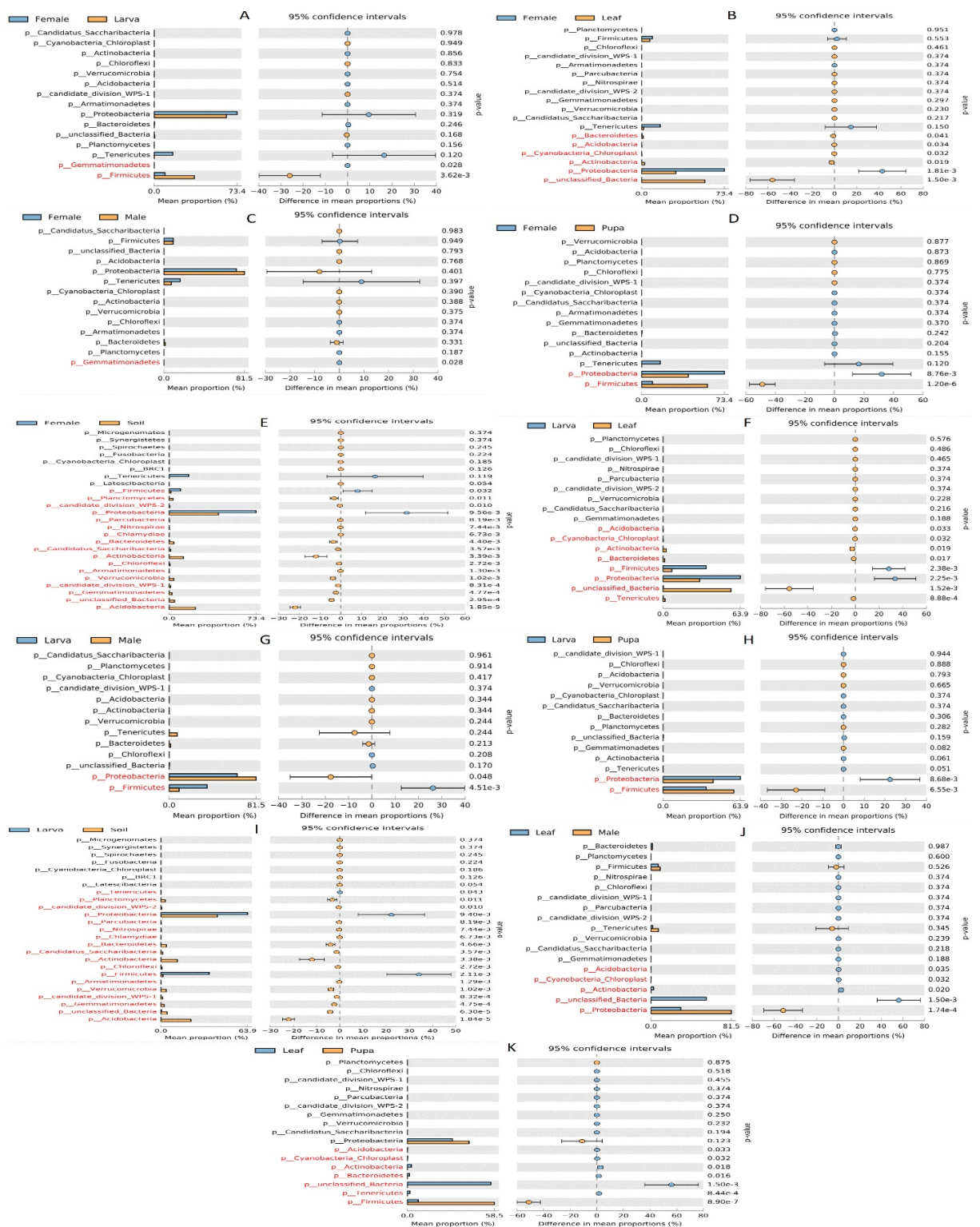


Figure S1. (A–K) Kruskal boxplot showing the significant differences in top abundant bacterial phyla

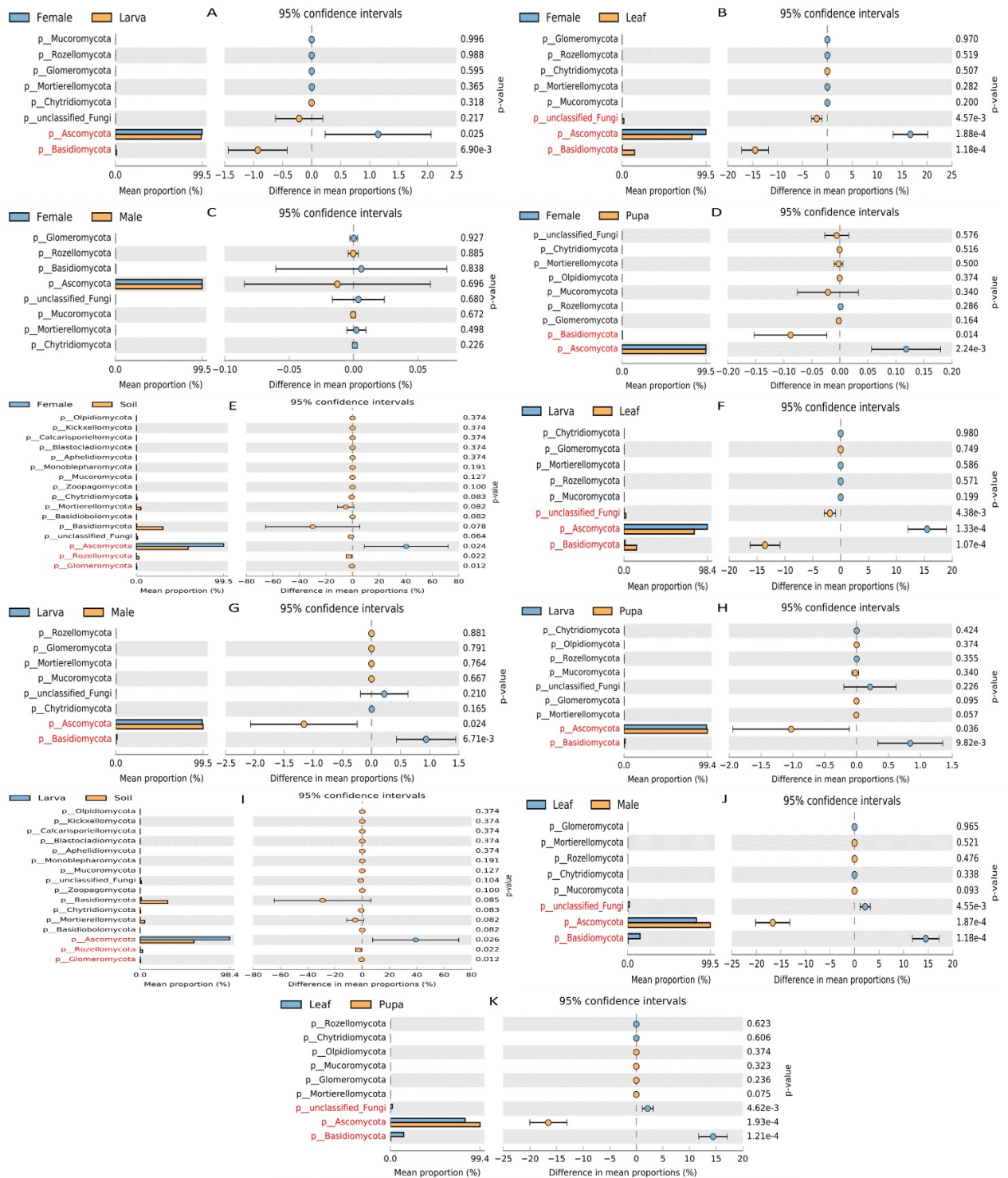


Figure S2. (A–K) Kruskal boxplot showing the significant differences in top abundant fungal phyla



Figure S3. (A–K) Kruskal boxplot showing the significant differences in top abundant bacterial genera



Figure S4. (A–K) Kruskal boxplot showing the significant differences in top abundant fungal genera