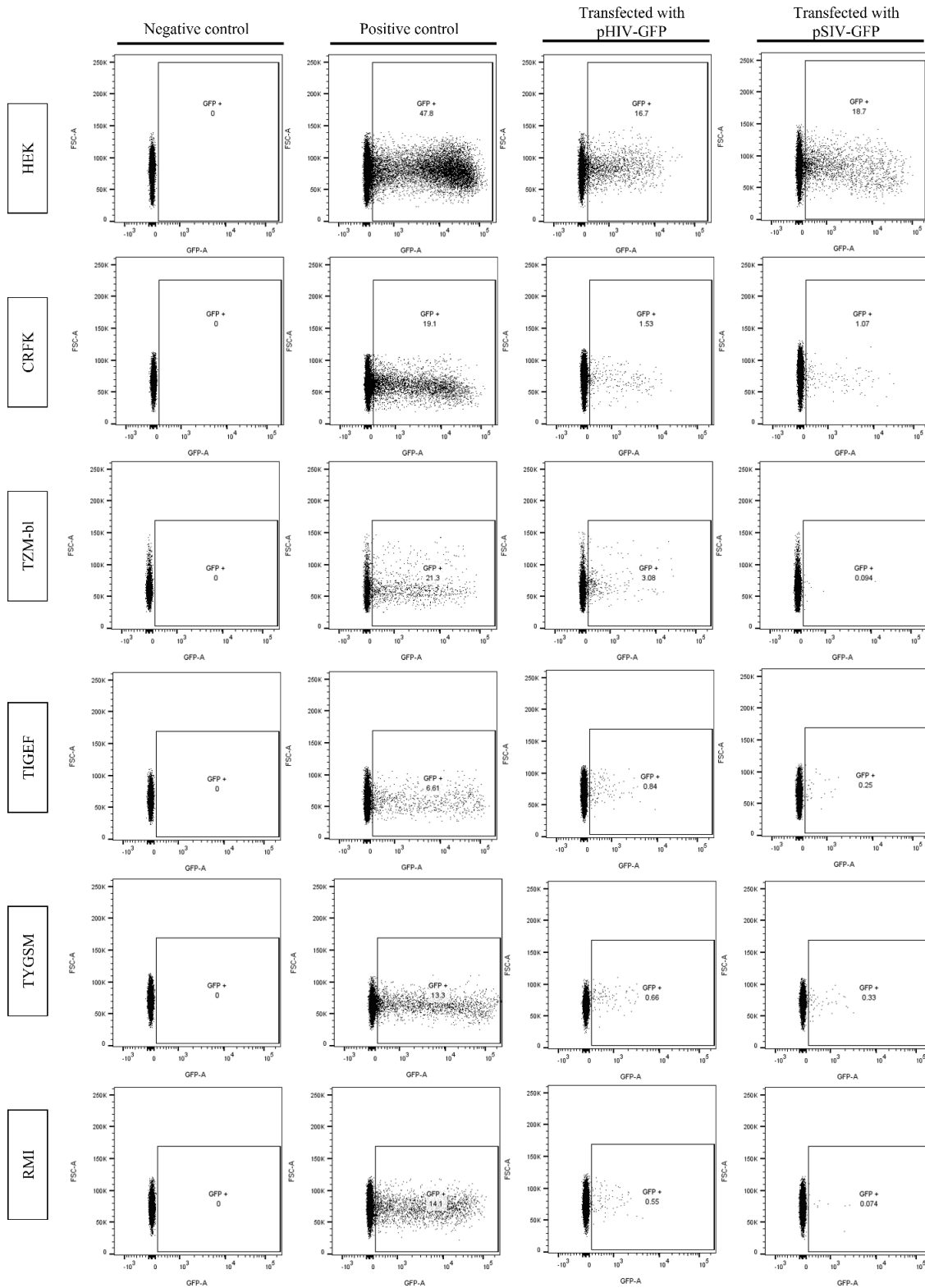
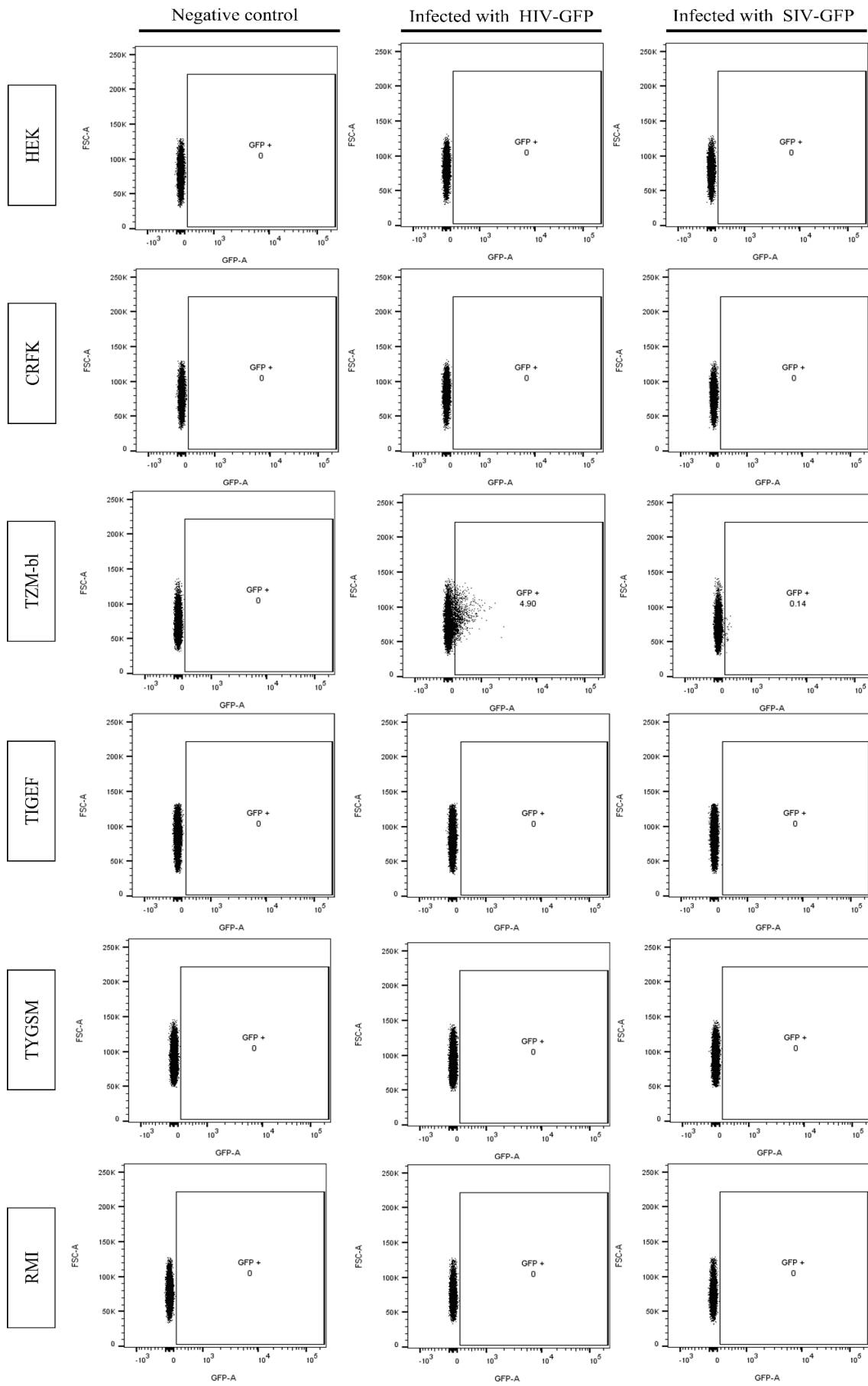


## Supplementary data



**Figure S1.** Flow cytometry analyses of cells transfected with pHIV-GFP and pSIV-GFP. Cells were acquired in a FACSCantoII and displayed according to FSC/GFP characteristics. Cells were analyzed using a FlowJo software. Non inoculated cells were used as negative controls.



**Figure S2.** Flow cytometry analyses of cells inoculated with HIV-GFP and SIV-GFP. Cells were acquired in a FACSCantoII and displayed according to FSC/GFP characteristics. Cells were analyzed using a FlowJo software. Non inoculated cells were used as negative controls.