

**Table S1.** Results of serological testing (ELISA) within different pig categories.

Category	<i>n</i> examined samples	IAV NP Ab positive	
		<i>n</i>	%
Piglets	1-4 weeks	35	8
	5-10 weeks	260	33
	11-20 weeks	249	27
Fatteners >20 weeks	153	86	56,2
Gilts	278	99	35,6
First parity sows	70	43	61,4
Sows	130	64	49,2
Boars	132	17	12,9
Pigs of unknown category	229	89	38,9
Total:	1536	466	30,3%

**Table S2.** Mean seroprevalence of IAV positive serum samples subtyped by HI (%) presented in different age groups.

category	piglets 1-4 weeks	piglets 5-10 weeks	piglets 11-20 weeks	fatteners >20 weeks	gilts	first parity sows	sows	boars	pigs of unknown category
tested sera samples ( <i>n</i> )	8	38	13	91	74	43	62	19	62
HI (%)									
H1N1	75	36.8	30.8	24.2	55.4	46.5	64.5	47.4	35.5
H3N2	87.5	47.4	30.8	9.9	60.8	69.8	82.3	10.5	14.5
H1N2	62.5	42.1	30.8	8.8	41.9	46.5	22.6	5.3	14.5
negative	12.5	39.5	53.8	71.4	6.8	23.3	12.9	73.7	54.8

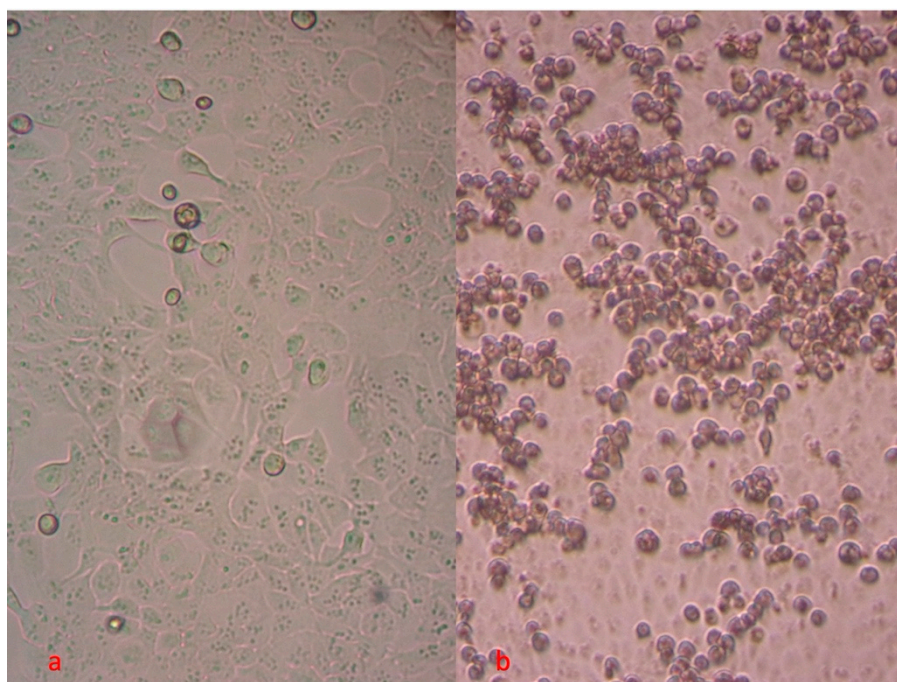
**Table S3.** Total of lung samples tested by Real-time RT-qPCR (M gene) and quantification cycle threshold (Cq) values.

County	Farm (F)/ backyard farm (BF)/slaughterhouse (SL)	<i>n</i> lungs	Category	Sample ID	Ct
Brod-Posavina	BF	3	Piglets 10-12 weeks	2209/1-3/2014	no Ct
	BF	2	Piglets 10-12 weeks	631/2/2015	no Ct
	BF	3	Piglets 9-12 weeks	631/3/2015	<b>28,61</b>
	BF	4	Piglets 9-12 weeks	P1-3/2015	no Ct
Varaždin	BF	4	Piglets 4-10 weeks	972/1-4/2014	no Ct
				2319/1/2011	-
				2319/2/2011	24,40
				2319/3/2011	30,26
	F14	5	Piglets 9-14 weeks	2319/4/2011	19,32
				1600/1/2012	38,41
				1600/9/2012	23,12
				1600/1,3,10/2012	-
	F13	7	Piglets 4-10 weeks	331/1-7/2016	-
				1954/1-3/2013	-
				PPA1-3/2014	-
				PA1-6/2015	-
Vukovar-Srijem	F13	3	Piglets 4 weeks	PA7-9/2015	-
				853/1-3/2016	-
				854/1/2016	16,94
				854/5/2016	22,94
	F18	5	Piglets 4-10 weeks	854/2,3,4/2016	-
				855/1-3/2016	-
				855/4/2016	32,28
				2571/1-3/2013	-
Zagreb	F18	3	Piglets 9-12 weeks	2571/1-3/2013	-
	SL	72	Fatteners	1-72/2015	-

	4	Piglets 6-11 weeks	2500/1-4/2012	-
F16	6	Piglets 6-11 weeks	2318/1-6/2013	-
	1	Piglet 10 weeks	1002/2014	-
	1	Piglet 4 weeks	PP/2015	-
<b>Total:</b>	<b>142</b>			<b>9 positive</b>

**Table S4.** Total of nasopharyngeal swabs tested by Real-time RT-qPCR (M gene) and quantification cycle threshold (Cq) values.

County	Farm (F)/ backyard farm (BF)/slaughterhouse (SL)	n lungs	Category	Sample ID	Cq
	F14	10	Sows	B1-10/2012	-
		10	Piglets 6-11 weeks	B11-20/2012	-
				1/2016	26,82
				2/2016	32,71
				3/2016	23,96
Vukovar-Srijem				4/2016	37,46
	F13	9	Piglets 4-6 weeks	5/2016	32,10
				6/2016	35,74
				7/2016	37,24
				8/2016	-
				9/2016	-
<b>Total:</b>		<b>29</b>			<b>7 positive</b>



**Figure S1.** MDCK cell culture, 10x. Inoculated sample 2319/4/2011 (H1N1). (a) Early formation of influenza-induced CPE, 2<sup>nd</sup> day postseed. (b) Influenza-induced CPE, 4<sup>th</sup> day postseed. Infected cells are detached and floating in the culture medium.