

Supplementary Information

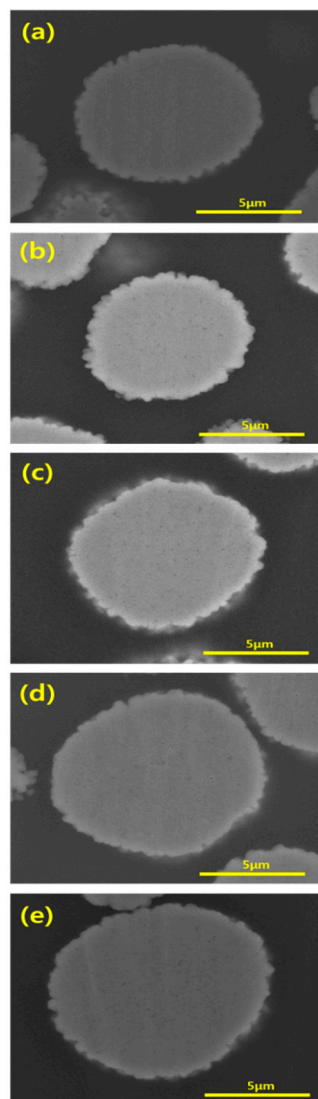


Figure S1. SEM cross-section images of the cathode active materials.

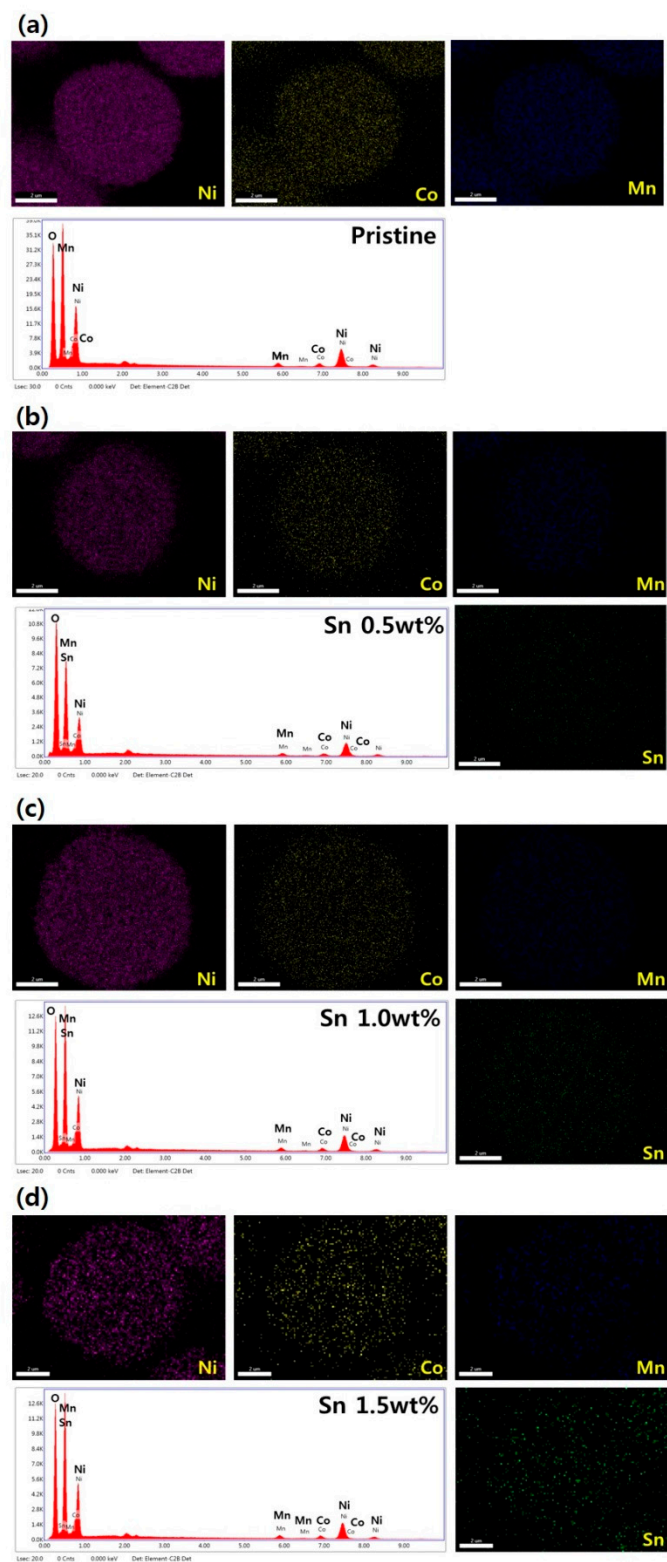


Figure S2. EDS cross-section mapping of the cathode active materials: (a) pristine, (b) Sn 0.5wt%, (c) Sn 1.0wt%, and (d) Sn 1.5wt%.

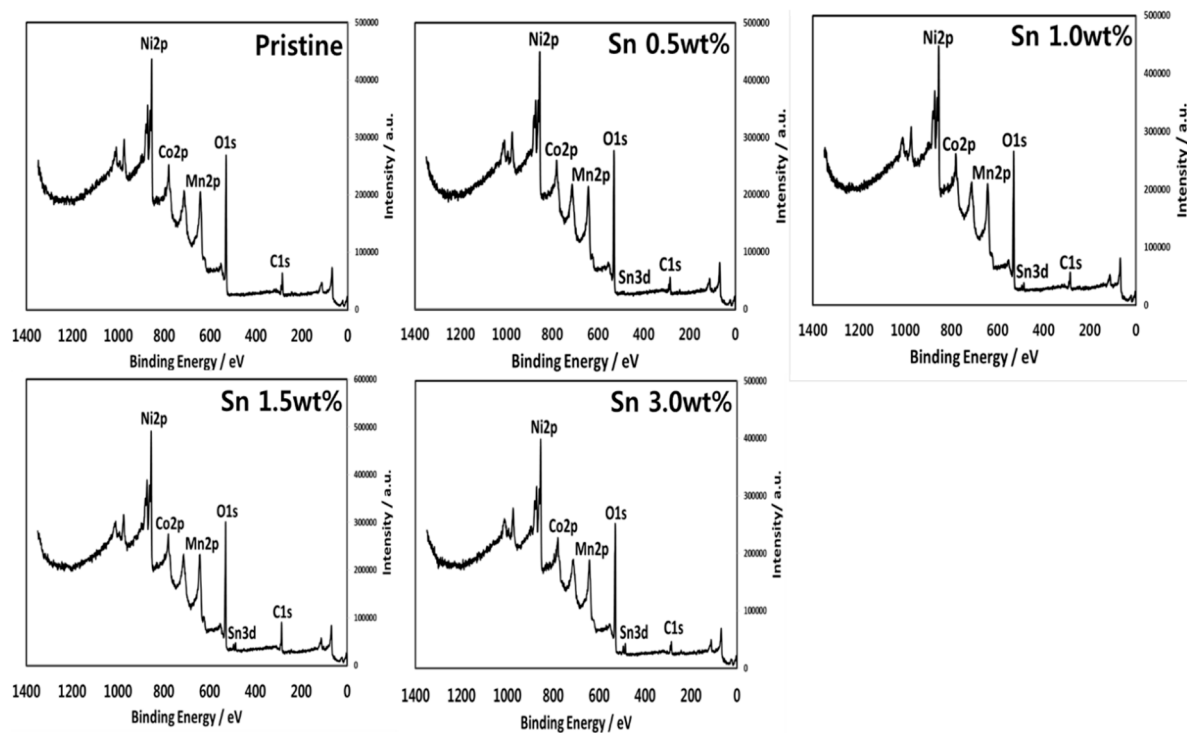


Figure S3. Wide XPS of the cathode active materials.



© 2017 by the authors; licensee MDPI, Basel, Switzerland. This article is an open access article distributed under the terms and conditions of the Creative Commons by Attribution (CC-BY) license (<http://creativecommons.org/licenses/by/4.0/>).