

Are Danes' Immigration Policy Preferences Based on Accurate Stereotypes?

Emil O.W. Kirkegaard ^{1,*}, Noah Carl ² and Julius D. Bjerrekær ³

¹ Ulster Institute for Social Research, London NW26 9LQ, UK

² Independent researcher, Cambridge, UK; noah_carl3742@hotmail.com

³ Independent researcher, Austin TX, USA; julius.db@icloud.com

* Correspondence: emil@emilkirkegaard.dk

Received: 09 February 2020; Accepted: 23 March 2020; Published: 26 March 2020

One origin country, Syria, was an outlier in our analyses. This is most likely because many migrants from that group had just arrived in the country as part of the exodus of Syrian refugees during the 2014-2015 European migrant crisis. Insofar as they had just arrived in the country, they would not have had full access to the labour market, despite being eligible for state assistance (including subsidized housing, as well as a monetary stipend). Moreover, the vast majority of Syrians in Denmark were initially housed in special immigration centres, meaning that they would not have come into contact with members of the public. As a consequence, the reported net fiscal contribution for this group is arguably less representative of Syrians in Danish society than the other reported figures are for their corresponding groups. In this document, we therefore report all of our main results with Syria excluded. These are highly similar in magnitude and direction to those reported in the manuscript itself.

Additional supporting analyses are available at: <https://osf.io/zb7es/>

An English version of the questionnaire used can be found at the end of the document.

Figure S1. Net fiscal contribution by origin country group, taken from the Danish Ministry of Finance. Values were converted from DKK/person/year.

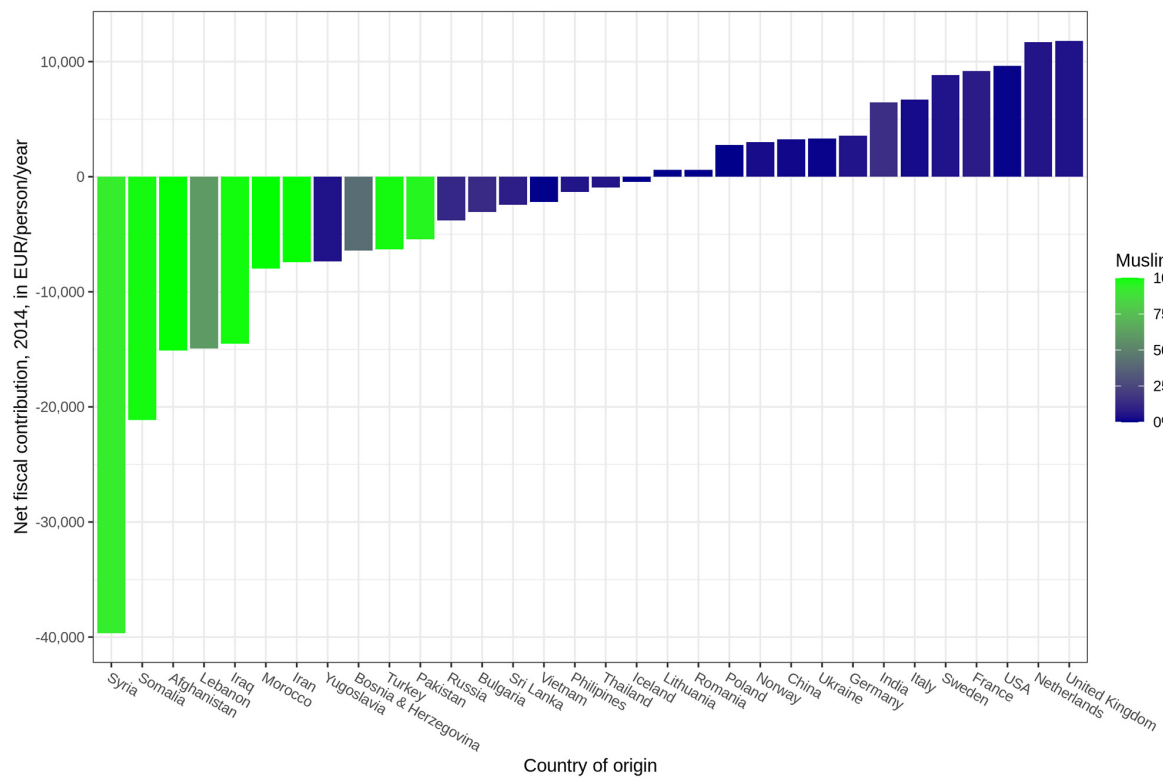


Table S1. Correlation matrix for primary aggregate-level variables (excluding Syria).

	Net Fiscal Contribution	Mean Estimate	Muslim Population (%)	Net Opposition
Net fiscal contribution	1			
Mean estimate	0.85 [0.70, 0.92]	1		
Muslim population (%)	-0.75 [-0.87, -0.54]	-0.70 [-0.84, -0.46]	1	
Net opposition	-0.82 [-0.91, -0.65]	-0.98 [-0.99, -0.96]	0.69 [0.44, 0.84]	1

Notes: 'Net fiscal contribution' refers to each origin country group's actual net fiscal contribution in Denmark. 'Mean estimate' refers to our respondents' mean estimate of each group's net fiscal contribution. 'Net opposition' refers to our respondents' net opposition to immigrants from each origin country. 'Muslim population (%)' refers to the percentage of Muslims in the home country.

Figure S2. Aggregate stereotype accuracy (excluding Syria). Y-axis values are groups' estimated average fiscal contributions.

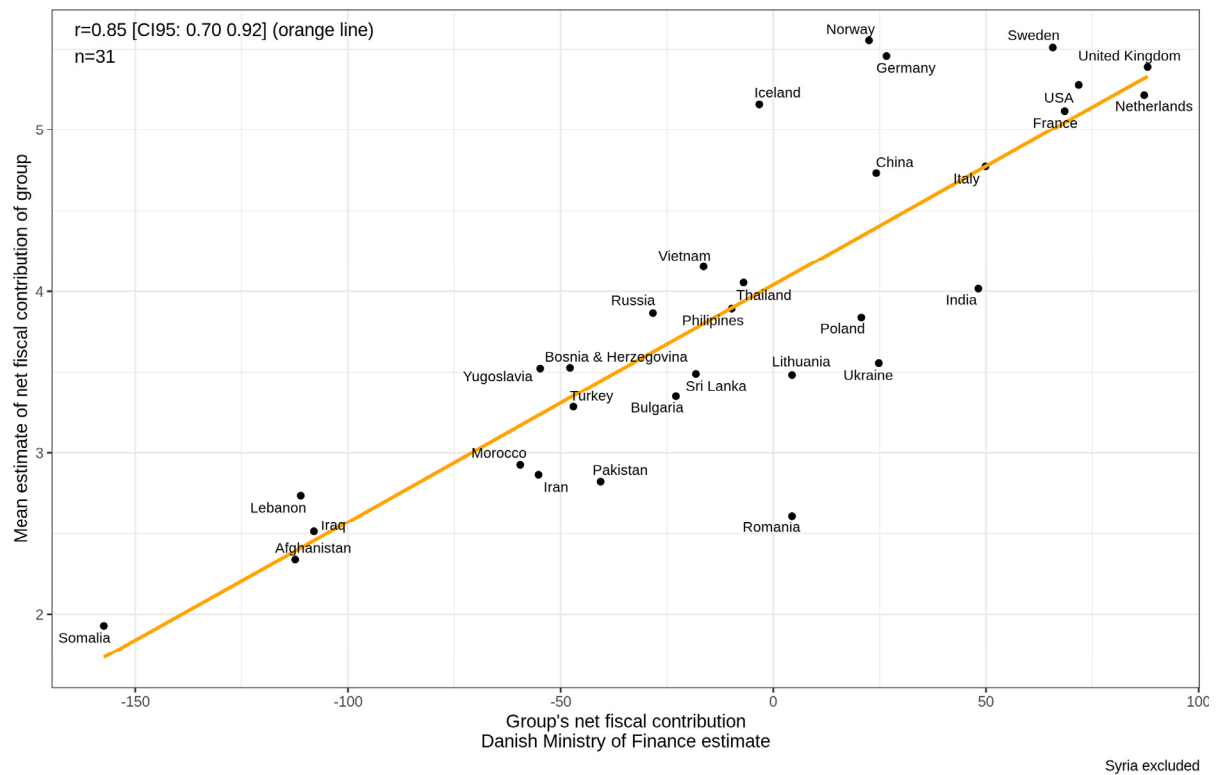


Figure S3. Muslim bias in aggregate stereotypes (excluding Syria).

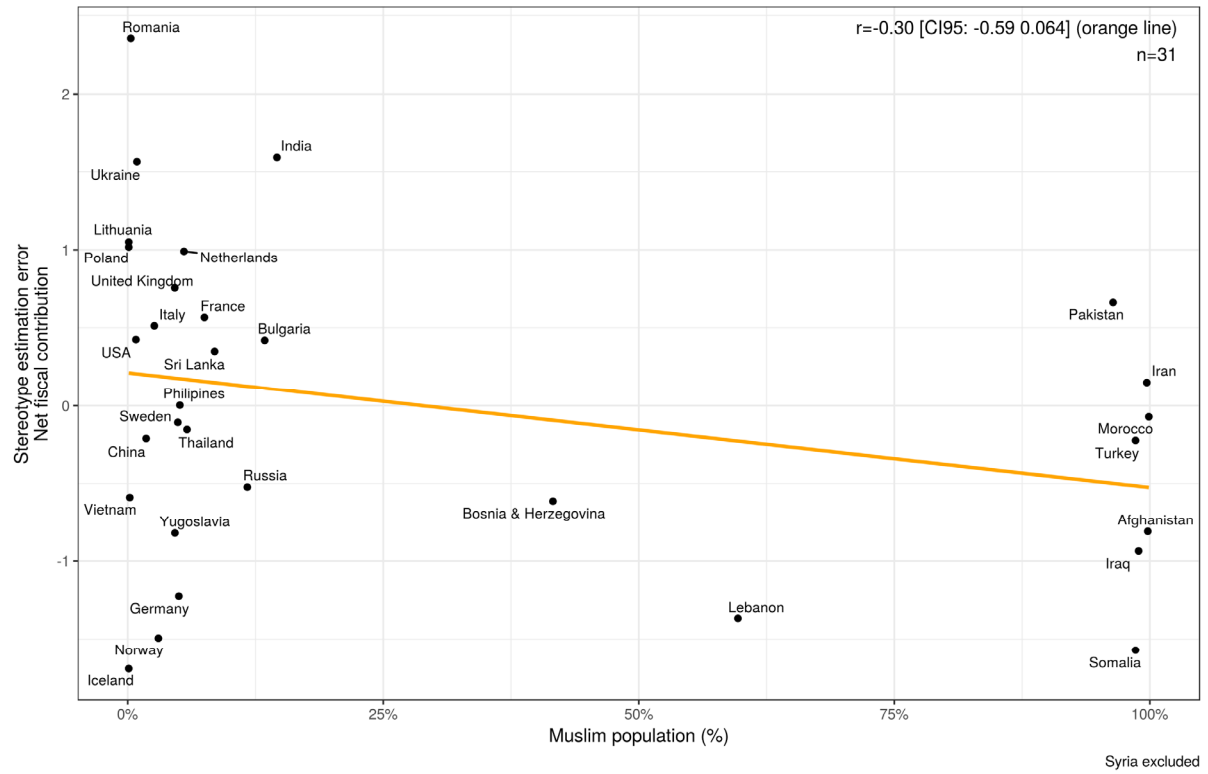


Figure S4. Path model for aggregate preferences (excluding Syria). Values are standardized regression coefficients. Asterisks denote significance at $p > 0.05$.

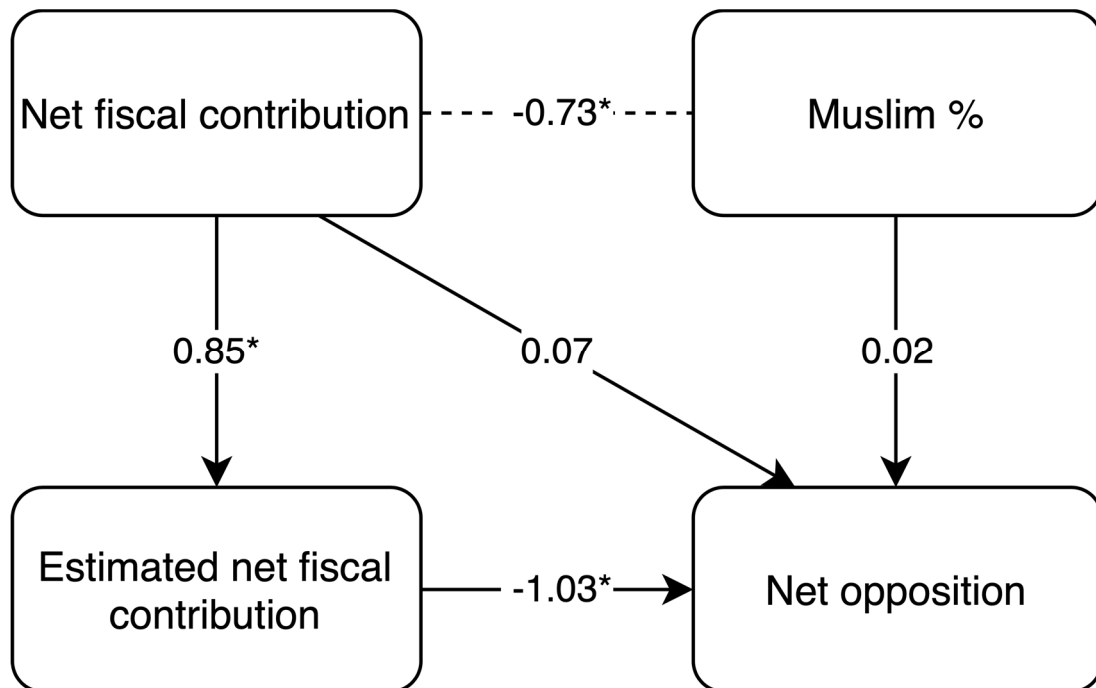


Figure S5. Scatterplot of net opposition and estimated net fiscal contribution (excluding Syria).

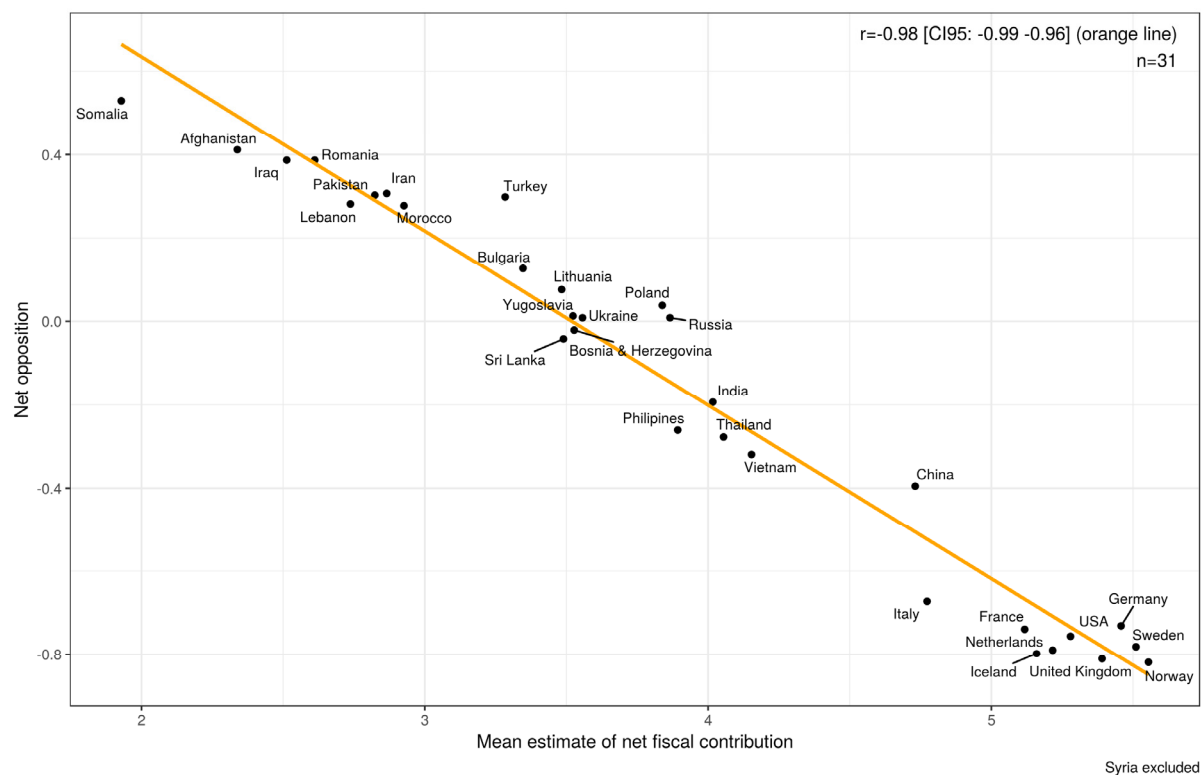


Figure S6. Distribution of individual stereotype accuracy (excluding Syria).

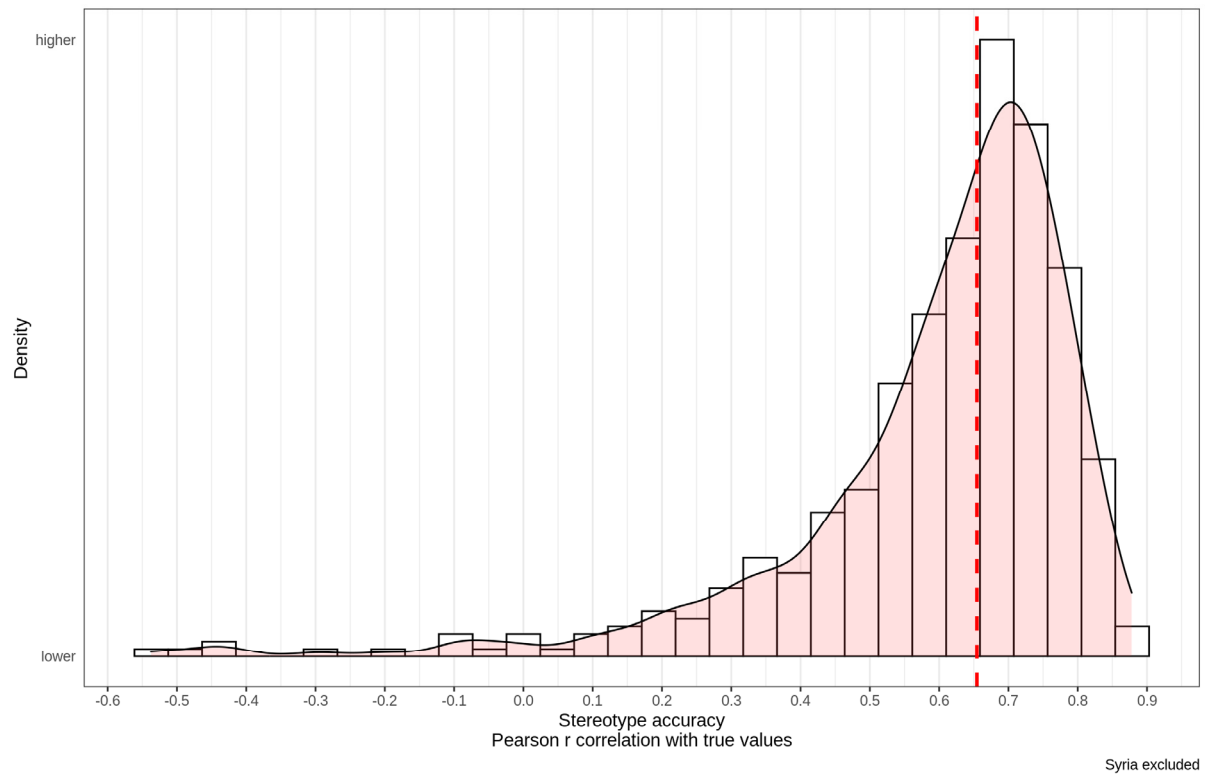


Figure S7. Muslim bias in individual stereotypes by party vote (including Syria). The y-axis is not standardised.

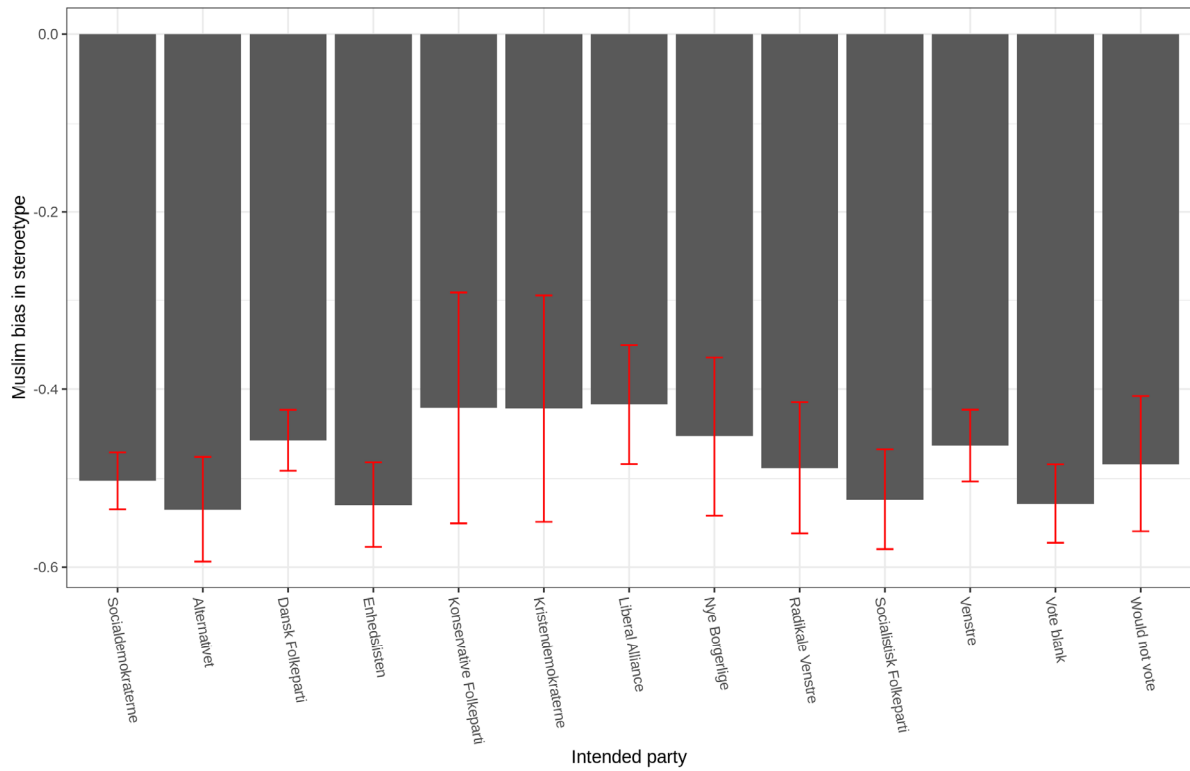


Figure S8. Residual Muslim preference by party vote (including Syria). The y-axis is not standardised.

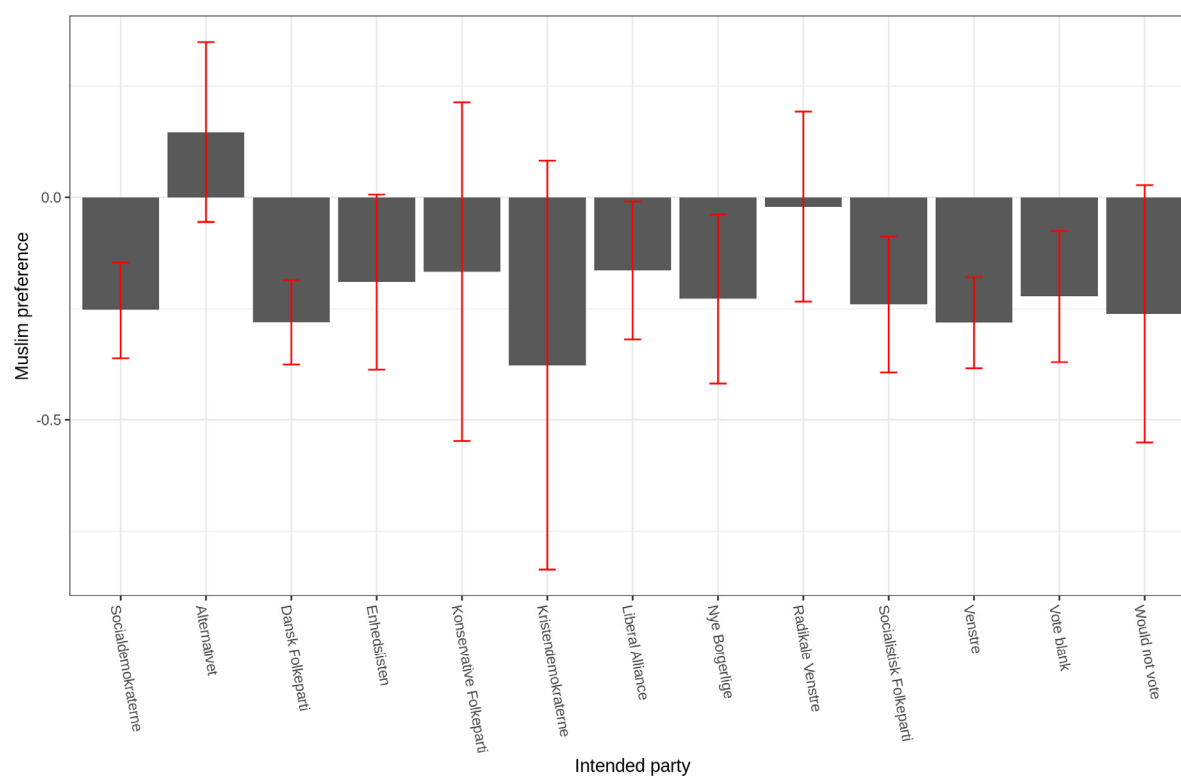


Figure S9. Estimates of net fiscal contributions by age-group.

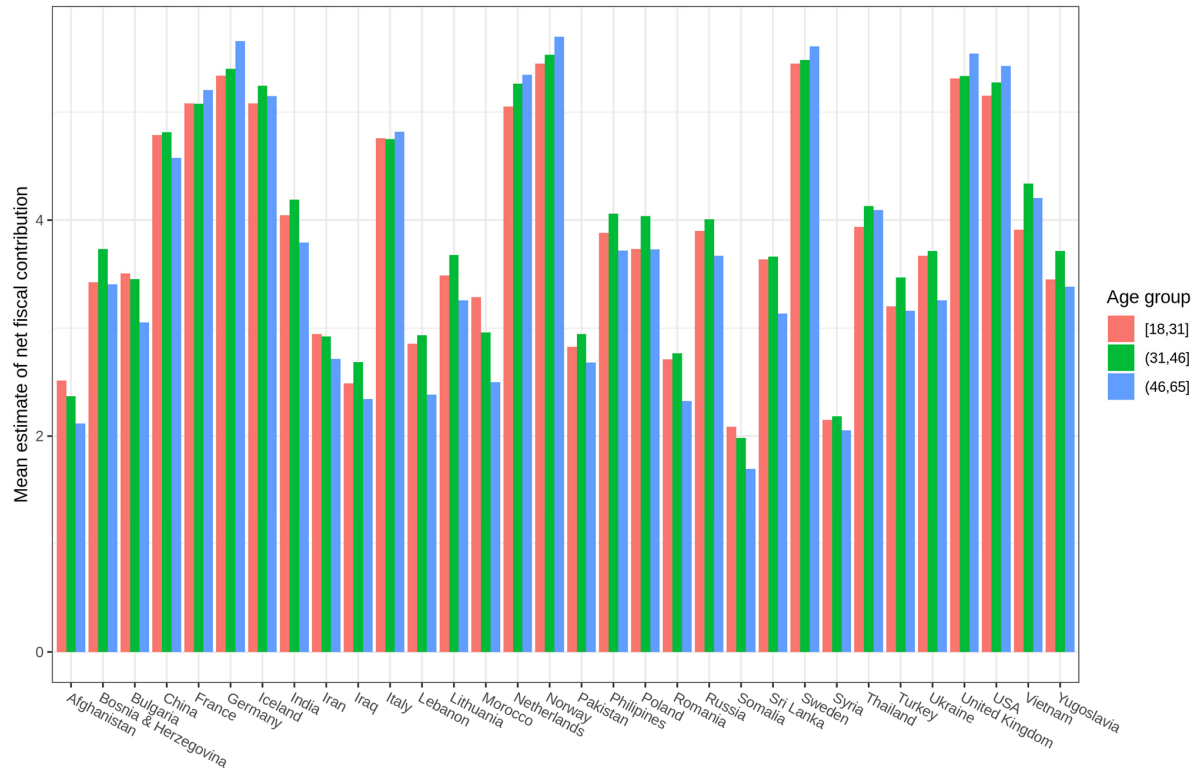
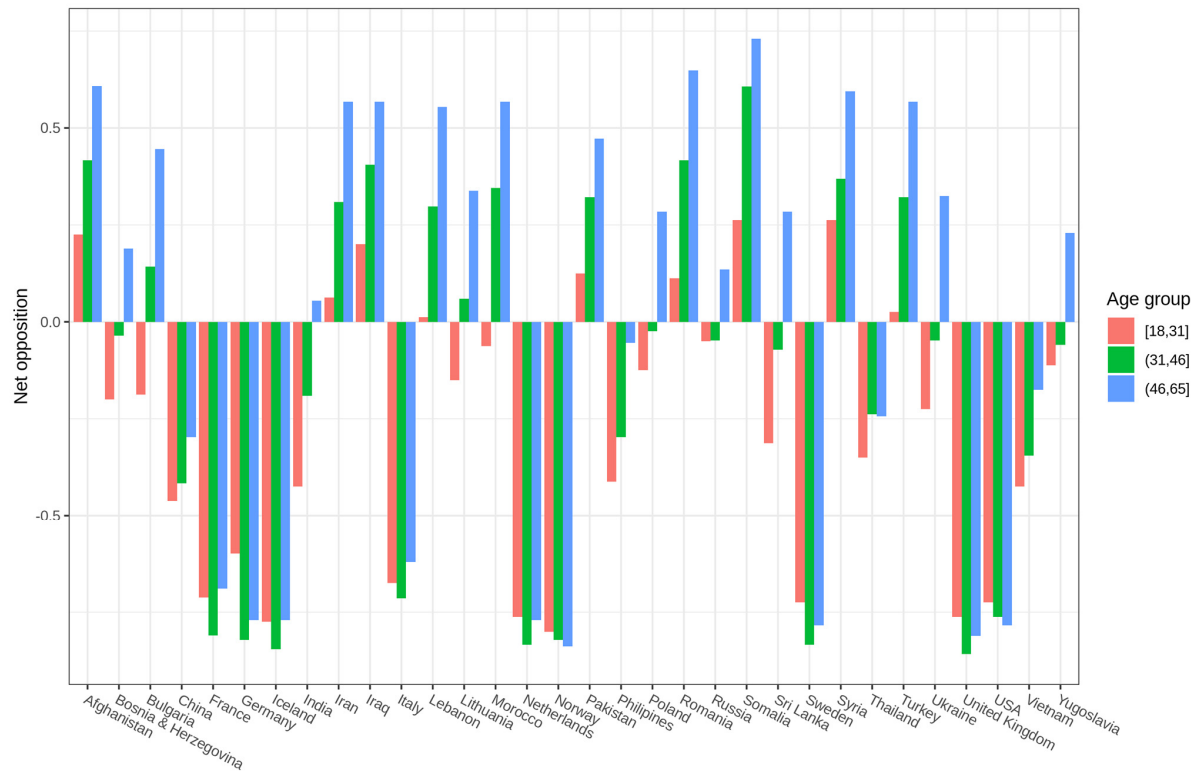


Figure S10. Immigration policy preferences by age-group.



Questionnaire (English)

Introduction

This survey consists of three sections. When you have answered all questions in a section, you can proceed to the next one. All responses are anonymous.

It takes 6-8 minutes to complete the survey, and we thank you for your help.

Economy

There may be a difference in how groups of immigrants in Denmark contribute to society.

The economical contributions of a group can be positive (contributes more than they receive), neutral (contributes as much as they receive) or negative (receives more than they contribute).

How do you think groups from the countries below contribute in Denmark?

	Very Negative	Negative	Slightly Negative	Neutral	Positive	Slightly Positive	Very Positive
Bulgaria							
Vietnam							
UK							
Thailand							
Syria							
Sweden							
Lebanon							
India							
France							
Germany							
China							
Pakistan							
Lithuania							
Former Yugoslavia							
Iceland							
Iran							
Somalia							
USA							
Bosnia and Herzegovina							
The Philippines							
Norway							
Iraq							
Sri Lanka							
Ukraine							
Holland							
Afghanistan							
Italy							
Russia							
Romania							
Turkey							
Morocco							
Poland							

Immigrant preferences

Immigrants in Denmark have different countries of origin.

Choose one of the options for how many immigrants you prefer to have in Denmark from each country: More immigrants from the country of origin, the same number of immigrants as there currently are, fewer immigrants, or no immigrants at all from that country.

	More Immigrants	Same Number of Immigrants	Fewer Immigrants	No Immigrants
Bulgaria				
Vietnam				
UK				
Thailand				
Syria				
Sweden				
Lebanon				
India				
France				
Germany				
China				
Pakistan				
Lithuania				
Former Yugoslavia				
Iceland				
Iran				
Somalia				
USA				
Bosnia and Herzegovina				
The Philippines				
Norway				
Iraq				
Sri Lanka				
Ukraine				
Holland				
Afghanistan				
Italy				
Russia				
Romania				
Turkey				
Morocco				
Poland				

Political affiliations

We would like to know about your political attitudes.

Please use the slider to adjust your agreement level with various political parties. Zero means you completely disagree with them, and 100 means you completely agree .

If there was an election tomorrow, which one of the following parties would you vote for?

Overall, how are muslims treated in Denmark, compared with non-muslims? Rate on a scale of 1-7, where 1 means they're treated much worse, and 7 means they're treated much better.

On a scale of 1-7, where 1 means you completely disagree and 7 means you completely agree, how much do you agree with the following statements:

Denmark should only let immigrants in who aren't burdens on the national budget.

Non-western immigrants currently pay more in taxes than they, on average, receive in public benefits.

Thank you for participating.

If you have a comment, suggestion or a question, please write it in the comment box below.



© 2020 by the authors. Submitted for possible open access publication under the terms and conditions of the Creative Commons Attribution (CC BY) license (<http://creativecommons.org/licenses/by/4.0/>).