

A

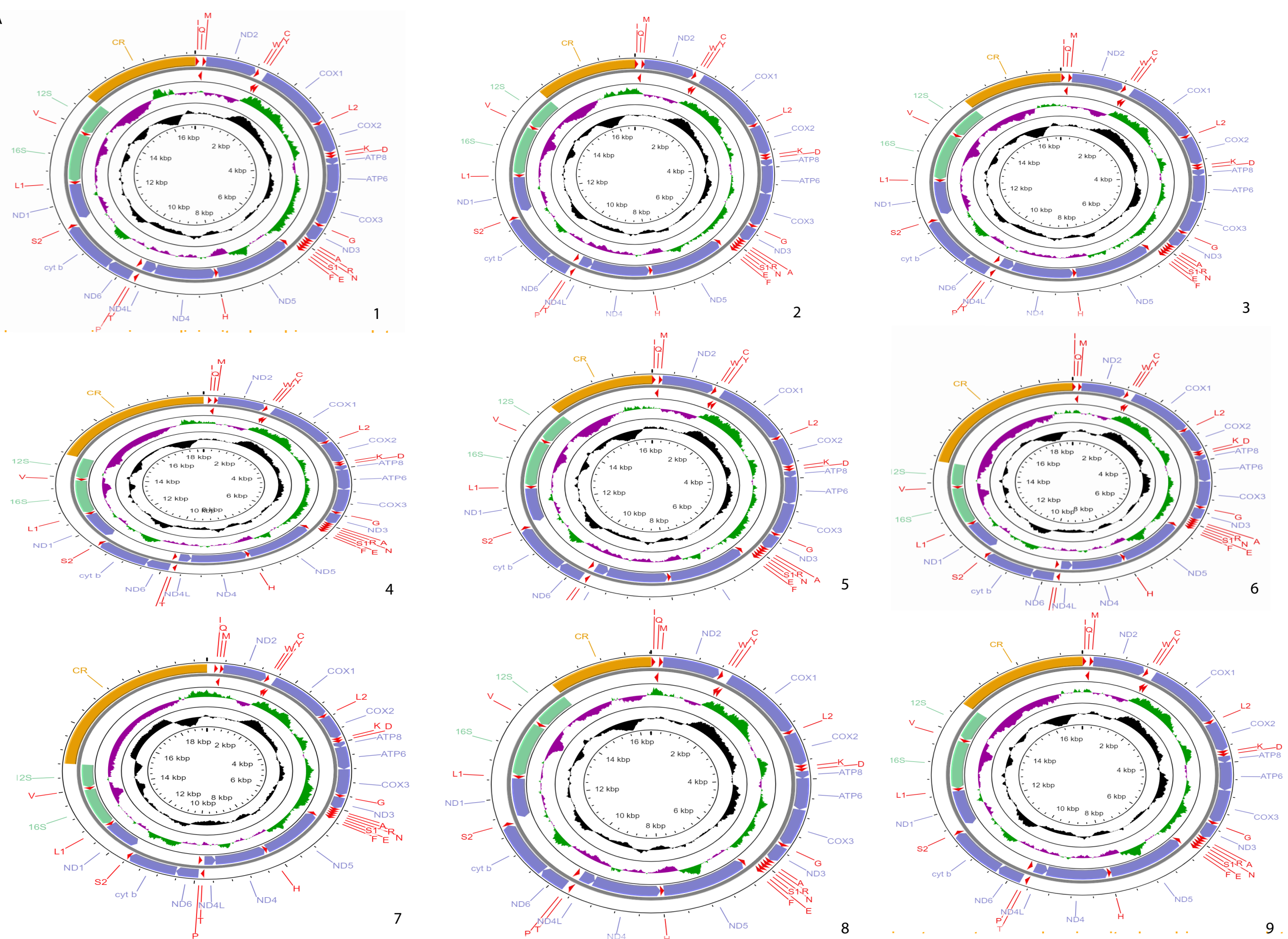


Figure S1. Circular maps of mitogenomes of Cetoniinae species (A): *Protaetia speciosa jouscelini* (1), *Cyprolais quadrimaculata* (2), *Dicronorhina derbyana* (3), *Eudicella euthalia oweni* (4), *Eudicella smithi* (5), *Goliathus goliatus* (6), *Jumnos ruckeri* (7), *Mecynorhina polyphemus* (8), *Mecynorhina torquata ugandensis* (9).

B

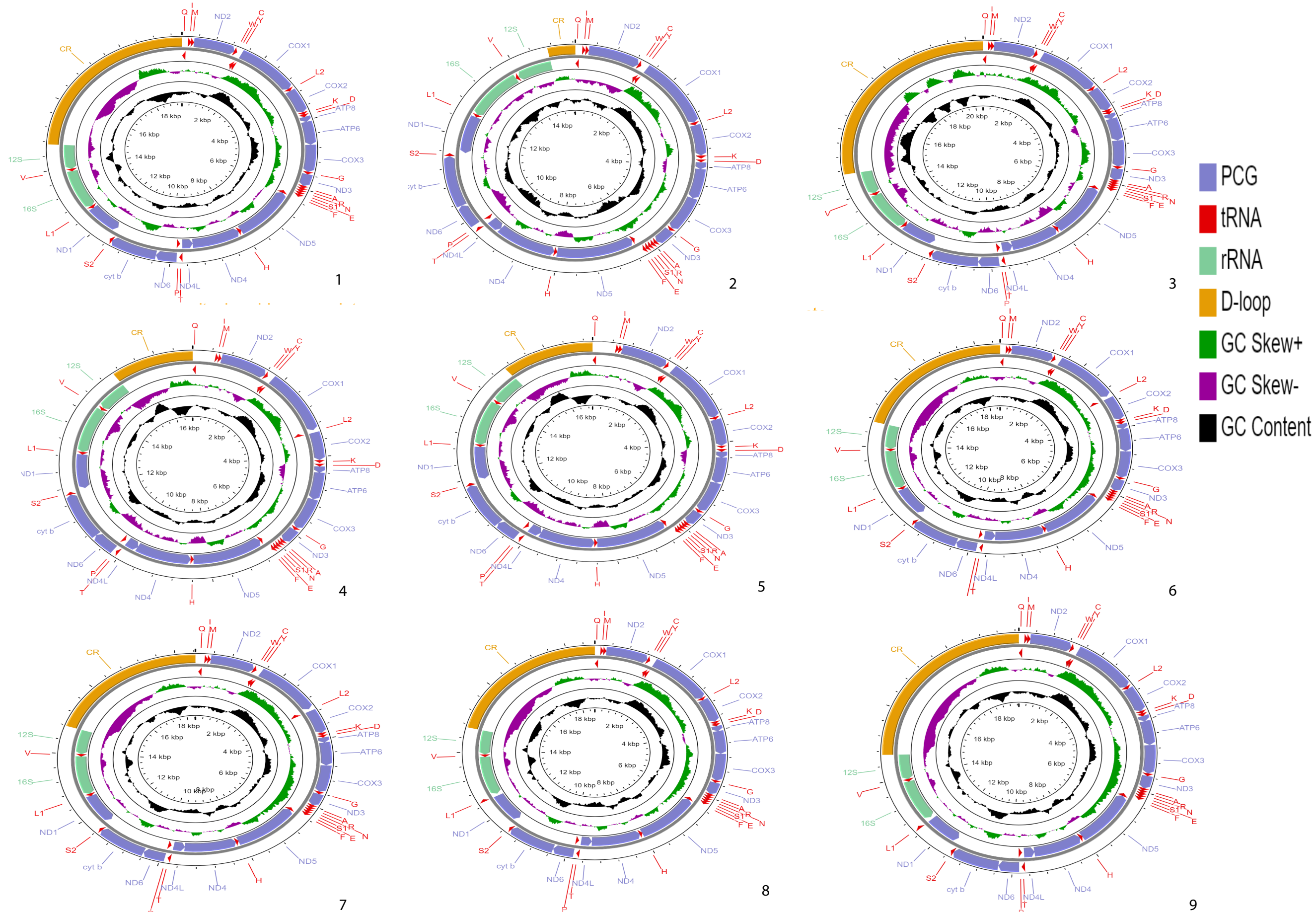


Figure S1. Circular maps of mitogenomes of Dynastinae species (B): *Chalcosoma Caucasus Caucasus* (1), *Dynastes hercules hercules* (2), *Oryctes nasicornis* (3), *Megasoma elephus elephus* (4), *Megasoma mars* (5), *Xylotrupes beckeri intermedius* (6), *Xylotrupes gideon beckeri* (7), *Xylotrupes gideon siamensis* (8), *Xylotrupes gideon sumatrensis* (9).