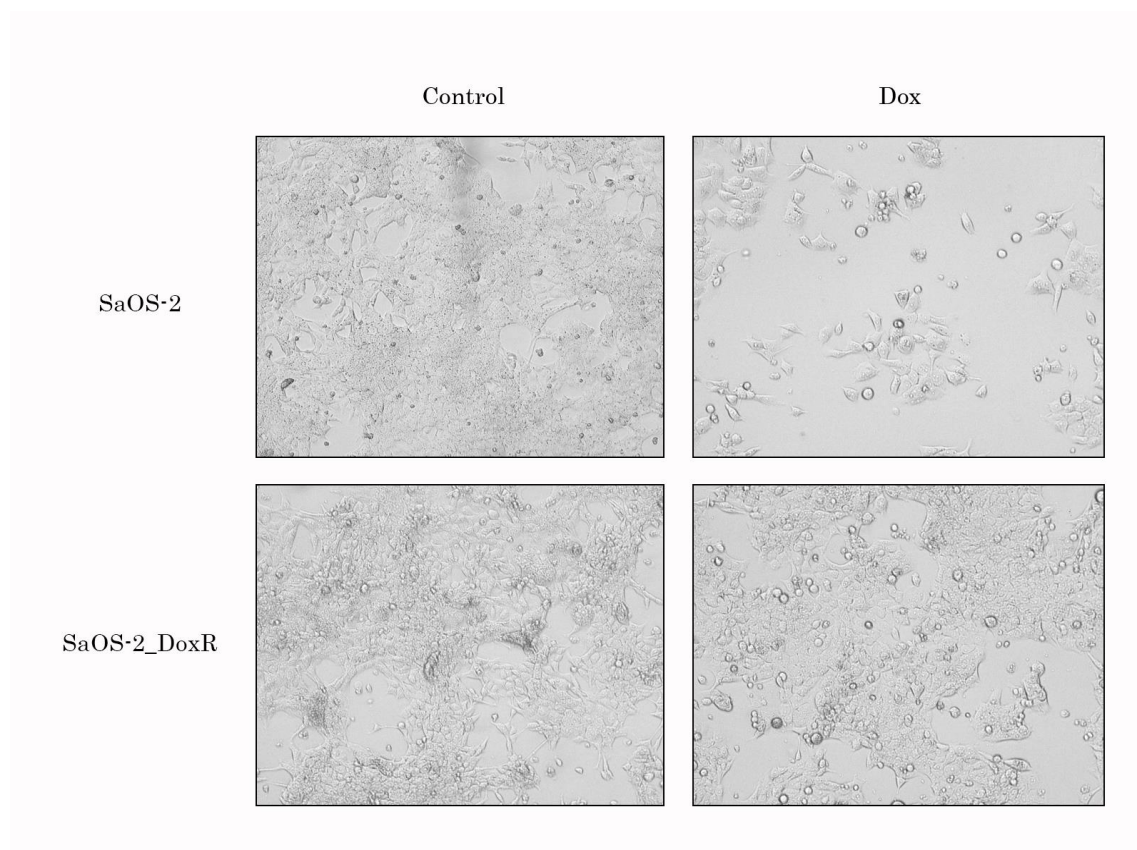
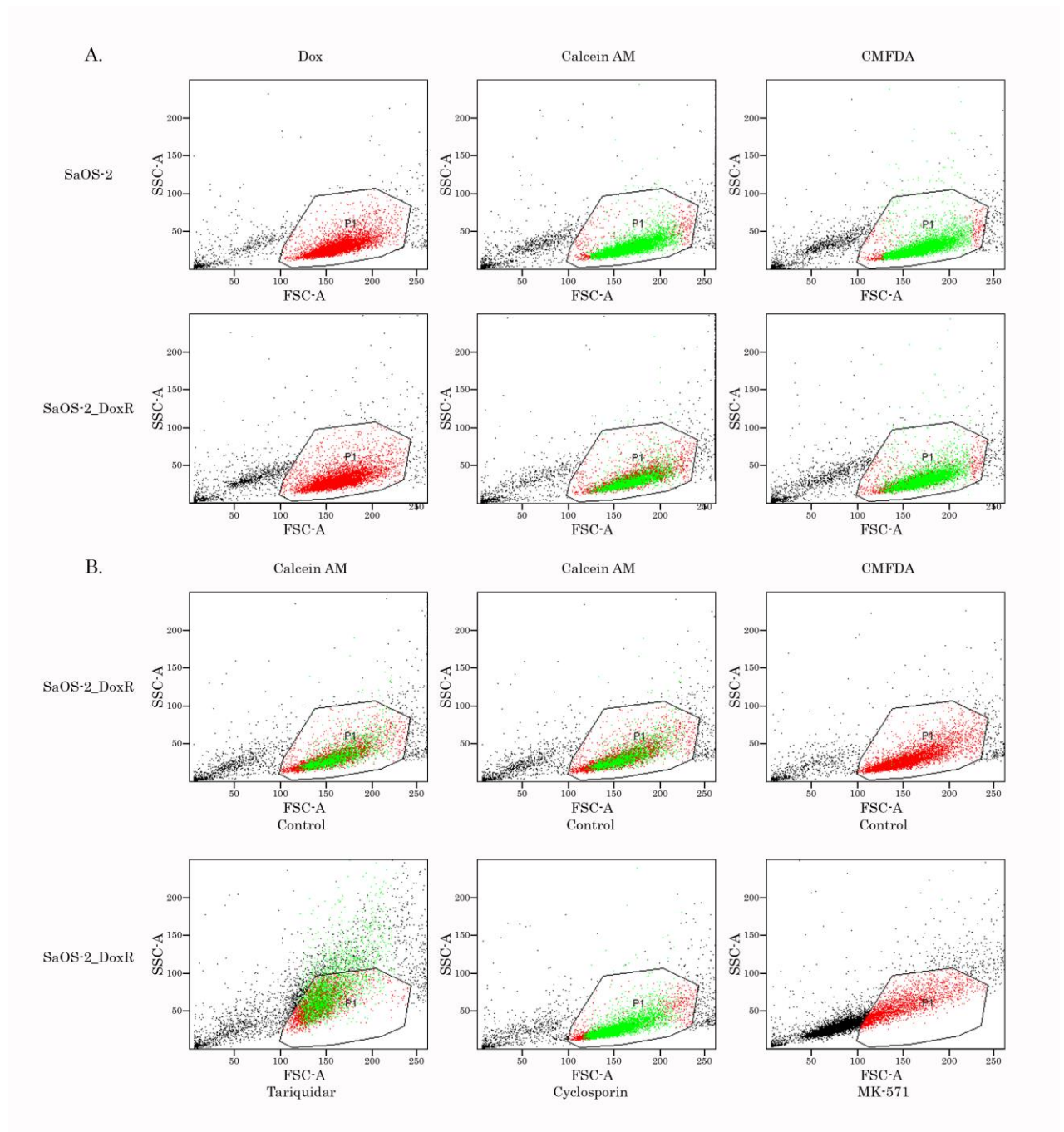


## Figure legends



**Supplementary Figure S1.** Dox induces the changes in the confluency of SaOS-2 cells. SaOS-2 and SaOS-2\_DoxR cells were treated with solvent (DMSO) (control) and Dox (1  $\mu$ M) for 72 h and subjected to the light microscopy (Leica, 10 $\times$ ).



**Supplementary Figure S2.** FSC and SSC characteristics of Dox-resistant and naive (i.e., drug-sensitive) SaOS-2 cells that were shown in Figure 4 (A) or Figure 5 (B).

**Supplementary Table S1. Primers for quantitative polymerase chain reaction**

Gene	Forward	Reverse
GAPDH	GACCACAGTCCATGCCATCA	TCCACCACCCTGTTGCTGTA
MDR-1	ATGCTCTGGCCTTCTGGATGGGA	ATGGCGATCCTCTGCTTCTGCCCAC
MRP-1	GCATGA TCCCTGAAGACGA	TAGAGCTGGCCCTTGTACTC
MRP-2	TAGAGCTGGCCCTTGTACTC	TCAACTTCCCAGACATCCTC
MRP-3	CGCCTGTTTTTCTGGTGGTT	TCCCCCAGTCACAAAGATG
MRP-4	GCTGAGAATGACGCACAGAA	TCCCAGCAAGGCACGATATT
MRP-5	GTCCTGGGTATAGAAGTGTG	CAGAAGATCCACACAACCCT
MRP-6	TTGGATTGCCCCTCATAGTC	TCTTTTGGTCTCAGTGGCCT
MRP-7	CTCCCACTGGATCTCTCAGC	TCGCATACACGGTGAGGTAG
ABCG2	TTTCCAAGCGTTCATTCAAAA A	TACGACTGTGACAATGATCTGAGC