

# Supplementary material: A CT-based radiomic signature can be prognostic for 10-months overall survival in metastatic tumors treated with nivolumab

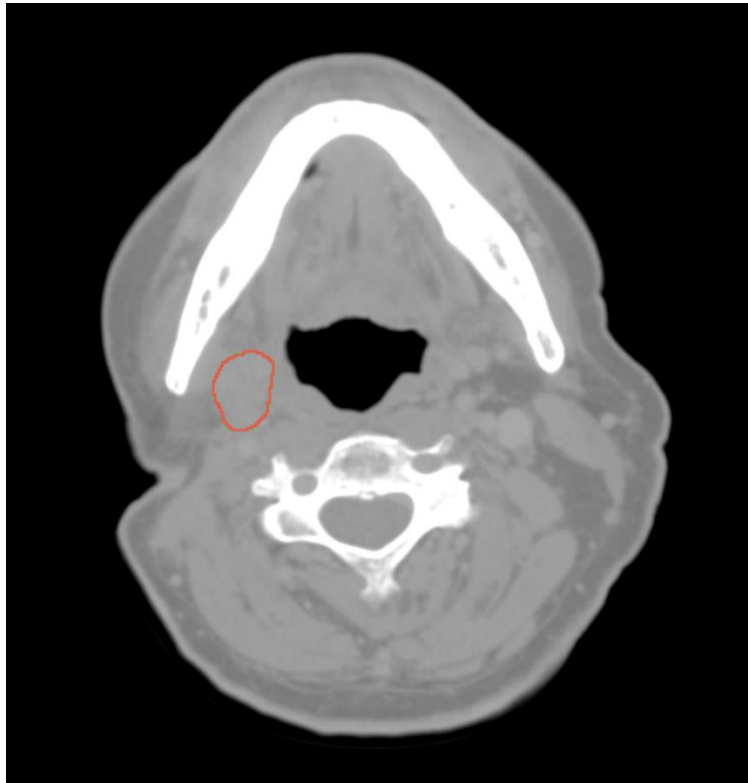
Valentina D.A. Corino <sup>1,\*</sup>, Marco Bologna <sup>1</sup>, Giuseppina Calareso <sup>2</sup>, Lisa Licitra <sup>3,4</sup>, Mariagrazia Ghi <sup>5</sup>, Gaetana Rinaldi <sup>6</sup>, Francesco Caponigro <sup>7</sup>, Franco Morelli <sup>8</sup>, Mario Airolidi <sup>9</sup>, Giacomo Allegrini <sup>10</sup>, Alessandra Cassano <sup>11</sup>, Daris Ferrari <sup>12</sup>, Aurora Mirabile <sup>13</sup>, Alice Tosoni <sup>14</sup>, Danilo Galizia <sup>15</sup>, Marco Merlano <sup>15,16</sup>, Andrea Sponghini <sup>17</sup>, Gabriella Moretti <sup>18</sup>, Luca Mainardi <sup>1</sup> and Paolo Bossi <sup>19</sup>

Table S1. Distribution of the different scanners used in the study.

Scanner_Model ▾	Scanner_Vend ▾↑	Acquired_Patients_Numb ▾
BrightSpeed	GE	2
Discovery CT 750 HD	GE	1
LightSpeed Pro 32	GE	1
LightSpeed RT 16	GE	1
LightSpeed VCT	GE	6
Optima CT 540	GE	3
Optima CT 660	GE	7
Revolution Evo	GE	4
Eclos	Hitachi	3
Scenaria	Hitachi	1
Brilliance 16	Philips	8
Brilliance 40	Philips	1
Brilliance 64	Philips	7
iCT 128	Philips	3
iCT 256	Philips	3
Ingenuity	Philips	2
Biograph 16	Siemens	1
Biograph 6	Siemens	1
Sensation 64	Siemens	6
Somatom Definition AS	Siemens	2
Somatom Definition AS+	Siemens	2
Somatom Definition Flash	Siemens	8
Somatom Force	Siemens	1
Somatom Perspective	Siemens	3
Aquilion	Toshiba	8

**Table S2.** Image acquisition parameters for the computed tomography (CT) images used in the studies. Numeric values are expressed as median and inter-quartile ranges.

CT IMAGE ACQUISITION PARAMETERS	
Tube Voltage (kVP)	120 [120-120]
Tube current (mA)	197 [121-297]
Slice thickness (mm)	2.5 [1.5-3]
Pixel spacing (mm)	0.51 [0.50-0.82]



**Figure S1.** Example of computed tomography image with the segmented tumor.