

Supplementary Table 1 Distribution of members of the *Arabidopsis thaliana* MYB family

| Subfamily | Gene ID | | | | |
|-----------|---------------------------------------|--------------|--------------|--------------|--------------|
| 1R-MYB | AT5G67580.1, | AT5G61620.1, | AT5G59570.1, | AT5G59430.4, | AT5G58900.1, |
| | AT5G58340.1, | AT5G58080.1, | AT5G56840.1, | AT5G53200.1, | AT5G52660.1, |
| | AT5G47390.1, | AT5G45580.1, | AT5G45420.1, | AT5G44190.1, | AT5G42630.2, |
| | AT5G37260.1, | AT5G29000.4, | AT5G23650.1, | AT5G18240.2, | AT5G17300.1, |
| | AT5G16560.1, | AT5G08520.1, | AT5G07210.1, | AT5G06800.2, | AT5G06110.1, |
| | AT5G05790.1, | AT5G05090.1, | AT5G04760.1, | AT5G03780.1, | AT5G02840.3, |
| | AT5G01380.1, | AT5G01200.1, | AT4G39250.1, | AT4G39160.1, | AT4G37180.1, |
| | AT4G36570.1, | AT4G34430.3, | AT4G31920.1, | AT4G28610.1, | AT4G18020.4, |
| | AT4G17695.1, | AT4G16420.2, | AT4G16110.1, | AT4G13640.2, | AT4G09450.1, |
| | AT4G04580.1, | AT4G01280.1, | AT4G01060.2, | AT3G62670.1, | AT3G60110.1, |
| | AT3G57980.1, | AT3G53790.1, | AT3G53440.1, | AT3G52250.1, | AT3G49850.1, |
| | AT3G46640.3, | AT3G46590.3, | AT3G25790.1, | AT3G24880.1, | AT3G24870.1, |
| | AT3G24120.1, | AT3G21430.2, | AT3G16857.1, | AT3G16350.1, | AT3G13040.1, |
| | AT3G12730.1, | AT3G12560.1, | AT3G11450.1, | AT3G11280.1, | AT3G10760.1, |
| | AT3G10590.1, | AT3G10580.2, | AT3G10113.1, | AT3G09600.2, | AT3G07740.2, |
| | AT3G04450.2, | AT3G04030.2, | AT2G47620.1, | AT2G47210.1, | AT2G46830.1, |
| | AT2G46410.1, | AT2G44730.1, | AT2G44430.1, | AT2G42660.1, | AT2G42150.1, |
| | AT2G40970.1, | AT2G40260.1, | AT2G38300.1, | AT2G38090.1, | AT2G37025.1, |
| | AT2G36960.2, | AT2G33610.1, | AT2G30432.1, | AT2G30424.1, | AT2G30420.1, |
| | AT2G25180.1, | AT2G20570.1, | AT2G20400.1, | AT2G18328.1, | AT2G13960.2, |
| | AT2G03500.1, | AT2G02060.1, | AT2G01760.1, | AT2G01060.1, | AT1G79430.2, |
| | AT1G75250.2, | AT1G74840.2, | AT1G72740.1, | AT1G72650.2, | AT1G71030.1, |
| | AT1G70000.1, | AT1G69580.1, | AT1G68670.1, | AT1G67710.1, | AT1G58220.1, |
| | AT1G49950.1, | AT1G49560.1, | AT1G49190.1, | AT1G49010.1, | AT1G32240.1, |
| | AT1G25550.1, | AT1G21700.1, | AT1G19510.1, | AT1G19000.1, | AT1G18960.1, |
| | AT1G18330.1, | AT1G17520.1, | AT1G17460.1, | AT1G15720.1, | AT1G14600.1, |
| | AT1G13300.1, | AT1G09710.1, | AT1G07540.1, | AT1G06910.1, | AT1G01520.1, |
| | AT1G01380.1, AT1G01150.1, AT1G01060.4 | | | | |
| 2R-MYB | AT3G06490.1, | AT4G09460.1, | AT1G66370.1, | AT1G56160.1, | AT4G37780.1, |
| | AT4G38620.1, | AT1G74080.1, | AT3G08500.1, | AT5G10280.1, | AT2G25230.1, |
| | AT2G23290.1, | AT1G08810.1, | AT1G06180.1, | AT4G01680.3, | AT1G57560.1, |
| | AT5G62320.1, | AT1G79180.1, | AT3G12820.1, | AT3G01530.1, | AT5G07700.1, |
| | AT5G54230.1, | AT4G34990.1, | AT5G56110.1, | AT4G37260.1, | AT5G23000.1, |
| | AT1G17950.1, | AT4G12350.1, | AT3G47600.1, | AT5G12870.1, | AT5G59780.3, |
| | AT4G33450.1, | AT4G17785.1, | AT5G62470.1, | AT5G11050.1, | AT1G35515.1, |
| | AT5G40330.1, | AT3G28910.1, | AT5G39700.1, | AT5G17800.1, | AT2G32460.2, |
| | AT1G48000.1, | AT5G49330.1, | AT4G28110.1, | AT5G57620.1, | AT3G12720.1, |
| | AT1G18710.1, | AT3G24310.1, | AT5G14340.1, | AT3G02940.1, | AT3G46130.1, |
| | AT5G06100.1, | AT1G73410.1, | AT2G02820.2, | AT4G13480.1, | AT1G22640.1, |
| | AT5G26660.1, | AT3G50060.1, | AT2G16720.1, | AT3G27810.1, | AT3G27785.1, |
| | AT2G39880.1, | AT1G66380.1, | AT3G49690.1, | AT4G18770.1, | AT5G61420.2, |
| | AT1G66230.1, | AT5G14750.1, | AT5G52600.1, | AT3G61250.1, | AT5G40430.1, |

| | |
|--------|--|
| | AT1G09770.1, AT3G60460.1, AT3G53200.1, AT1G18570.1, AT4G22680.1, AT4G26930.1, AT1G69560.1, AT3G48920.1, AT2G31180.1, AT1G09540.1, AT5G16600.1, AT5G16770.1, AT5G67300.1, AT1G66390.1 |
| | AT5G55020.1, AT3G30210.1, AT1G56650.1, AT3G27920.1, AT3G55730.1, AT3G13540.1, AT5G15310.2, AT1G74430.1, AT1G74650.1, AT5G40350.1, AT3G09230.1, AT5G67300.1, AT5G67300.1, AT1G66390.1 |
| | AT4G25560.1, AT2G47460.1, AT1G25340.1, AT1G63910.1, AT5G60890.1, AT3G11440.1, AT3G23250.1, AT3G28470.1, AT5G40360.1, AT2G37630.1, AT3G62610.1, AT5G67300.1, AT5G67300.1, AT1G66390.1 |
| | AT1G68320.1, AT3G29020.1, AT2G36890.1, AT5G65230.1, AT5G41020.1, AT5G52260.1, AT5G35550.1, AT3G13890.2, AT2G26950.1, AT2G26960.1, AT4G21440.1, AT5G67300.1, AT5G67300.1, AT1G66390.1 |
| | AT5G49620.1, AT1G26780.1, AT5G65790.1, AT1G16490.1, AT1G34670.1, AT4G05100.1, AT5G07690.1, AT3G01140.1, AT2G47190.1, AT1G14350.1, AT5G58850.1, AT5G67300.1, AT5G67300.1, AT1G66390.1 |
| 3R-MYB | AT3G09370.1, AT4G00540.2, AT4G32730.1, AT5G02320.1, AT5G11510.2 |
| 4R-MYB | AT3G18100.2 |

Supplementary Table 2 Distribution of members of the Grape (*Vitis vinifera*) MYB family

| Subfamily | Gene ID | | | |
|-----------|--------------------|---------------------|---------------------|--------------------|
| 1R-MYB | V216s0039g01762.1, | V214s0006g00450.1, | V214s0036g00460.1, | V208s0007g01920.1, |
| | V206s0004g06100.1, | V217s0000g04130.1, | V216s0039g01605.1, | V210s0071g00660.1, |
| | V204s0008g01820.1, | V216s0039g01752.1, | V202s0025g04220.1, | V213s0019g03370.1, |
| | V212s0134g00480.1, | V206s0080g00790.1, | V216s0039g01754.1, | V219s0015g01170.1, |
| | V218s0001g02210.1, | V202s0033g00460.1, | V213s0019g04010.3, | V216s0039g01758.1, |
| | V204s0079g00410.1, | V207s0031g02280.1, | V206s0004g00570.1, | V215s0048g02410.1, |
| | V219s0015g01165.1, | V208s0040g03220.6, | V203s0063g02410.1, | V207s0031g02275.1, |
| | V217s0000g07510.3, | V218s0122g00670.2, | V215s0046g02260.2, | V202s0033g00370.1, |
| | V204s0008g00900.2, | V211s0016g02410.1, | V218s0001g01170.1, | V200s0194g00130.3, |
| | V218s0001g02160.1, | V216s0039g01765.1, | V212s0057g00920.1, | V201s0026g01050.1, |
| | V216s0050g01180.2, | V210s0116g00500.1, | V201s0011g00790.1, | V210s0116g01760.1, |
| | V200s0299g00060.1, | V209s0002g03540.1, | V203s0038g04460.4, | V209s0002g03610.1, |
| | V211s0016g01890.1, | V213s0156g00340.1, | V218s0152g00016.1, | V203s0091g01030.1, |
| | V208s0007g07580.1, | V208s0105g00370.1, | V217s0000g00990.4, | V213s0106g00370.1, |
| | V211s0016g05650.1, | V207s0005g04120.1, | V206s0004g02520.6, | V212s0059g02360.2, |
| | V209s0054g01620.1, | V207s0151g00480.1, | V200s0475g00040.10, | V208s0040g00900.1, |
| | V208s0040g01640.1, | V209s0002g01480.21, | V214s0128g00860.1, | V200s1311g00020.1, |
| | V214s0036g01380.1, | V202s0012g00630.1, | V212s0028g00980.2, | V212s0028g03100.2, |
| | V205s0077g01480.1, | V204s0023g01910.1, | V202s0012g00570.1, | V202s0033g00300.1, |
| | V203s0017g02280.6, | V206s0004g05120.1, | V218s0001g07620.1, | V201s0026g02550.1, |
| | V208s0007g06310.3, | V218s0001g12610.1, | V216s0100g00420.1, | V205s0029g00060.2, |
| | V203s0063g02680.1, | V215s0046g01130.1, | V210s0003g01380.3, | V202s0033g00440.1, |
| | V212s0028g02080.3, | V207s0005g01010.1, | V207s0197g00060.1, | V215s0046g01790.1, |
| | V200s0475g00030.4, | V209s0070g00405.1, | V201s0011g05830.1, | V203s0063g01060.1, |
| | V201s0137g00050.1, | V216s0050g02530.1, | V211s0206g00060.2, | V201s0010g02230.2, |
| | V208s0058g00240.1, | V204s0008g05900.4, | V207s0005g02730.3, | V219s0085g00890.2, |
| | V201s0011g03110.1, | V217s0000g10100.2, | V213s0067g01500.1, | V206s0004g07000.1, |
| | V208s0040g00100.1, | V208s0007g08160.10, | V213s0156g00370.6, | V208s0007g06180.1, |
| | V200s1624g00010.1, | V212s0057g01490.2, | V208s0040g01460.1, | V203s0063g02670.1, |
| | V217s0000g10110.1, | V211s0016g04600.3, | V217s0000g06810.1, | V218s0001g11390.2, |
| | V207s0005g01910.4, | V216s0100g00430.1, | V216s0039g01900.3, | V206s0004g08050.2, |
| | V202s0012g01940.1, | V204s0043g00340.7, | V211s0016g04130.1, | V206s0004g04940.3, |
| | V201s0011g04220.1, | V202s0087g00140.1, | V218s0001g12530.2, | V214s0108g01580.1, |
| | V213s0019g01670.1, | V207s0005g06680.1, | V203s0063g02620.1 | |
| 2R-MYB | V214s0006g01280.1, | V207s0141g00100.1, | V216s0013g01560.1, | V216s0039g01920.1, |
| | V204s0023g03710.1, | V207s0005g01210.1, | V205s0077g01360.1, | V211s0078g00480.1, |
| | V214s0219g00050.1, | V215s0046g00170.1, | V218s0117g00210.1, | V211s0016g01320.1, |
| | V214s0108g00830.1, | V216s0039g01725.1, | V214s0108g01010.1, | V208s0007g01540.1, |
| | V207s0005g01950.1, | V217s0000g08480.1, | V201s0026g01910.1, | V218s0001g11170.1, |
| | V209s0002g01400.1, | V214s0066g01010.1, | V218s0001g09850.1, | V218s0001g05670.1, |
| | V211s0016g02780.1, | V205s0049g02260.1, | V207s0129g01050.1, | V201s0026g02770.1, |
| | V219s0015g01280.1, | V217s0000g02650.1, | V201s0011g01190.1, | V202s0033g00400.1, |

| | |
|--------|--|
| | V217s0000g02660.1, V211s0016g05660.1, V216s0039g01761.1, V217s0000g01890.2, V204s0008g01870.1, V217s0000g09080.1, V207s0130g00040.1, V208s0056g00800.2, V216s0050g00050.1, V200s0203g00170.1, V214s0006g01340.1, V209s0002g01380.1, V214s0006g01290.1, V205s0077g00500.1, V211s0016g01300.1, V202s0033g00390.1, V212s0134g00490.1, V219s0090g00590.1, V205s0049g01020.1, V217s0000g08550.1, V202s0025g00320.1, V207s0005g03340.1, V217s0000g06410.1, V216s0039g01756.1, V216s0022g01210.1, V216s0050g00070.1, V213s0067g01360.1, V206s0004g04140.1, V213s0064g00960.1, V201s0011g04760.1, V208s0007g07230.1, V212s0059g00700.1, V202s0033g00450.1, V204s0008g00620.1, V203s0180g00210.1, V205s0020g01100.1, V219s0014g03820.1, V214s0083g00120.1, V216s0039g01710.1, V214s0066g01220.1, V216s0039g01764.1, V209s0002g01410.1, V216s0039g01740.1, V211s0052g01490.1, V202s0033g00430.1, V218s0001g08470.1, V212s0134g00570.1, V204s0008g01830.1, V217s0000g05400.1, V200s1352g00010.1, V206s0061g00470.1, V201s0011g01200.1, V200s0341g00050.1, V201s0127g00730.1, V208s0056g01190.2, V203s0038g02310.1, V214s0060g00240.1, V217s0000g06190.1, V207s0005g02480.1, V214s0083g01060.1, V206s0004g06280.1, V219s0085g00940.1, V215s0046g03190.1, V218s0117g00200.1, V208s0007g05030.1, V204s0044g01380.1, V205s0049g01010.1, V200s0203g00070.1, V200s1241g00010.1, V215s0021g02040.1, V213s0019g03200.1, V208s0007g00410.1, V213s0084g00530.1, V211s0016g01310.1, V201s0011g03730.1, V216s0013g01570.1, V214s0006g01620.1, V206s0009g02480.2, V217s0000g03560.1, V208s0007g04830.1, V202s0012g01650.1, V213s0067g01630.1, V202s0033g00410.1, V217s0000g02730.1, V211s0016g05690.1, V204s0008g01810.1, V201s0026g02600.1, V206s0004g02110.1, V216s0039g01763.1, V201s0010g00410.1, V214s0036g00500.1, V218s0001g15260.1, V204s0008g01840.1, V219s0085g00050.1, V214s0066g01090.1, V214s0066g02180.1 |
| 3R-MYB | V215s0048g02120.1, V211s0016g03750.2, V204s0008g03780.3, V204s0008g03790.5, V208s0007g00360.1, V216s0039g01750.1 |

Supplementary Table 3 Distribution of members of the Wheat (*Triticum aestivum*) MYB family

| Subfamily | Gene ID | | | |
|-----------|---------------------|---------------------|---------------------|---------------------|
| 1R-MYB | Traes.216652F6B.1, | Traes.839C94CA3.1, | Traes.D9A4C1AB0.3, | Traes.F7B9CBA99.1, |
| | Traes.1787A8428.1, | Traes.75F8A05CF.2, | Traes.30D2DA7DA.1, | Traes.F3F4A8B2A.1, |
| | Traes.D1807A4E0.1, | Traes.EEE59C2E7.1, | Traes.304E62CCE.1, | Traes.E250F49DB1.1, |
| | Traes.5F686B67C.1, | Traes.92EA1F290.4, | Traes.4D25427CB.1, | Traes.1074E21D6.1, |
| | Traes.2EDC5C26F.1, | Traes.98EA87DFA1.1, | Traes.1EBB348CB.1, | Traes.68BC65ED4.1, |
| | Traes.E8C400686.1, | Traes.2F2381640.1, | Traes.562426A67.1, | Traes.931C25F08.1, |
| | Traes.BA181D2AD.1, | Traes.26A958CDD.1, | Traes.665B92F4E.2, | Traes.1D415A4CF.3, |
| | Traes.34B6145E5.6, | Traes.300AB5CC9.11, | Traes.3B8CB5283.1, | Traes.282C4747C.4, |
| | Traes.93815D497.1, | Traes.D098A5241.1, | Traes.8A9D9ACCB.1, | Traes.1144FC823.1, |
| | Traes.002FAE6E8.1, | Traes.3041037F1.1, | Traes.660616C44.2, | Traes.31EED5C94.1, |
| | Traes.3AB4EBE4F.1, | Traes.BDFDE5BF1.1, | Traes.A63427EE8.1, | Traes.EDA7A1267.1, |
| | Traes.060C24872.1, | Traes.0F82AC8F0.1, | Traes.458B5662C.1, | Traes.E1F692526.1, |
| | Traes.673985B1D.1, | Traes.736D60ADD.1, | Traes.BDDD76A8B.1, | Traes.5CB4803CD.2, |
| | Traes.8AF1A10AB.1, | Traes.50C15318E.1, | Traes.998EC9F74.1, | Traes.310E46F15.7, |
| | Traes.19F222799.7, | Traes.77F235694.1, | Traes.68851ADC8.1, | Traes.270084801.1, |
| | Traes.68FFE0FFA.1, | Traes.2054A21EE.4, | Traes.276CC5E27.5, | Traes.9CC3EA7C9.3, |
| | Traes.4DF357170.1, | Traes.F18440729.1, | Traes.73A93153A.1, | Traes.71FC575B0.1, |
| | Traes.6626D4A69.1, | Traes.993477788.1, | Traes.206AE5B76.1, | Traes.7E8EBDE1E.4, |
| | Traes.6506152C8.2, | Traes.79F6F585D.5, | Traes.F7D2C31DB.1, | Traes.F809FA27D.1, |
| | Traes.24DBD38A8.2, | Traes.28559D303.1, | Traes.C184D0525.3, | Traes.9E45828B0.3, |
| | Traes.6B4FA59C6.2, | Traes.362F82EAD.30, | Traes.30F715B53.13, | Traes.DF23FE973.1, |
| | Traes.F484B1A35.15, | Traes.7E9C131F4.8, | Traes.405FE0DBA.1, | Traes.C13CD3ECB.1, |
| | Traes.B45238368.2, | Traes.F6CE72D8D.1, | Traes.845402F4B.1, | Traes.8398893D8.1, |
| | Traes.B7F04D24D.1, | Traes.297FBF3A3.1, | Traes.C6BEE3896.1, | Traes.61692C8F3.2, |
| | Traes.794DAF12D.1, | Traes.965E2F790.2, | Traes.F1DB969A8.2, | Traes.BB971D610.1, |
| | Traes.572EF99CA.2, | Traes.E65C48107.1, | Traes.55A3F252C.1, | Traes.6780F56DD.4, |
| | Traes.AB55D9F4E.2, | Traes.AE7851A5F.1, | Traes.5D8EE6802.17, | Traes.6EEB8D2B2.1, |
| | Traes.475B27CF6.1, | Traes.6A126F5F5.1, | Traes.7034372AC.1, | Traes.CF481F6AC.5, |
| | Traes.12B53AB09.5, | Traes.05774F3AC.7, | Traes.03C96BECE.1, | Traes.43EFBAAD5.1, |
| | Traes.16279F989.27, | Traes.32D8155C6.3, | Traes.D06222817.1, | Traes.73B7FB5C1.3, |
| | Traes.F227310FD.1, | Traes.8EA143F67.1, | Traes.62FDC3C38.1, | Traes.34669CA7B.4, |
| | Traes.FB63C505B.5, | Traes.C729D25F8.1, | Traes.239CDF865.1, | Traes.28B163E7C.2, |
| | Traes.58DDB90E3.1, | Traes.8417C5F8B.1, | Traes.9A1395EC7.1, | Traes.5869E3C31.1, |
| | Traes.1B7CF183F.3, | Traes.73BC102D3.3, | Traes.C0F4A948C.3, | Traes.2CFFBD60E.3, |
| | Traes.7589A1385.3, | Traes.30CF35BB3.1, | Traes.8756ECB5A.8, | Traes.0E0A747A1.1, |
| | Traes.72D2B7C35.1, | Traes.EAF038D23.3, | Traes.EB206B8BC.3, | Traes.3EE830A43.8, |
| | Traes.72808D4CB.1, | Traes.5E492444E.1, | Traes.6F77CFB03.10, | Traes.DEA065330.1, |
| | Traes.8ACA5E563.2, | Traes.FEA7D3672.1, | Traes.BF6FD97DA.1, | Traes.119609AE8.1, |
| | Traes.9636192C8.1, | Traes.FF8F7A939.1, | Traes.D00AB8CFA.9, | Traes.8D627C185.1, |
| | Traes.F6047634A.1, | Traes.0C01933E1.1, | Traes.10172C13A.1, | Traes.B30884E0E.1, |
| | Traes.6A75A61AC.1, | Traes.DA7413B04.1, | Traes.2C27C34AF.4, | Traes.4476835E0.1, |
| | Traes.015B8CB08.1, | Traes.17C974117.1, | Traes.93E51B797.1, | Traes.435A95A74.9, |

| | | | |
|---------------------|---------------------|--------------------|---------------------|
| Traes.72ECC7747.1, | Traes.2B0A44F87.1, | Traes.9E9E5FD89.2, | Traes.7E9E3A389.3, |
| Traes.C9D25868F.1, | Traes.ED6E0EE34.1, | Traes.EB47672ED.5, | Traes.A2C97A02D.5, |
| Traes.99EC36CD4.2, | Traes.20D189350.3, | Traes.87EF37490.5, | Traes.A631E1F0C.5, |
| Traes.00D311B94.2, | Traes.692FEF87A.7, | Traes.B71F3F028.3, | Traes.3C6511D69.1, |
| Traes.7220D33B3.4, | Traes.45417CBA9.6, | Traes.0C6735099.1, | Traes.DC5786149.5, |
| Traes.C0A2B4F041.1, | Traes.552D41920.6, | Traes.BBAC725C3.2, | Traes.991931CF9.2, |
| Traes.E2629CBC1.1, | Traes.61E35C455.1, | Traes.8224C29A9.1, | Traes.A33076690.1, |
| Traes.3B4E00416.7, | Traes.6F783E776.6, | Traes.327FBC2CA.2, | Traes.4B5FE030C.1, |
| Traes.2F376689A.5, | Traes.1FB74A6E1.3, | Traes.5B5A264A8.1, | Traes.1C6A8C773.2, |
| Traes.17EF1FF01.3, | Traes.9D2735F60.2, | Traes.C5FFFD54A.1, | Traes.DBE4E3146.1, |
| Traes.090D0E08E.1, | Traes.01E24503F.1, | Traes.8781D3C6C.1, | Traes.43D709979.1, |
| Traes.D45376F32.5, | Traes.D82CA7827.2, | Traes.44456AE22.1, | Traes.3640B95AB.2, |
| Traes.2527CA8BF.4, | Traes.D9F27151E.1, | Traes.8D3A3687D.1, | Traes.09DD5A1DC.1, |
| Traes.EFD6D48C0.1, | Traes.1B12D7856.1, | Traes.C32B01619.2, | Traes.C32B016191.2, |
| Traes.AE0BEF1BE.6, | Traes.9C1318B2F.1, | Traes.C73E7E6FB.1, | Traes.A44464337.1, |
| Traes.6486B493A.1, | Traes.941E7DE4D.1, | Traes.0862C6644.1, | Traes.1318B59D3.3, |
| Traes.A28533902.1, | Traes.156E53683.1, | Traes.B26E341BE.3, | Traes.EED669F6A.1, |
| Traes.EED669F6A1.1, | Traes.AC25F01A6.1, | Traes.22DE624A5.3, | Traes.DECB8080D.1, |
| Traes.891566958.1, | Traes.05E08500B.3, | Traes.50D6A231C.1, | Traes.16EECD38D.9, |
| Traes.0E9BE0271.1, | Traes.31CD3BB2E.8, | Traes.481D51B66.2, | Traes.E94233A40.4, |
| Traes.ED205638C.1, | Traes.F20FD5D20.2, | Traes.86AF9114B.1, | Traes.25253EF6C.6, |
| Traes.7F92C0CB9.1, | Traes.476AB27D8.5, | Traes.3FC31F9ED.1, | Traes.F7F1834AA.1, |
| Traes.138F3DBE5.1, | Traes.36467B9A4.1, | Traes.B50BEBC7E.4, | Traes.F09C7CA19.1, |
| Traes.A42E71A00.2, | Traes.2B62A6D74.1, | Traes.D9A29948B.1, | Traes.EF4A57213.2, |
| Traes.7AA5EFD05.6, | Traes.264CE0C2E.1, | Traes.8DEB9794C.1, | Traes.9DC9A9192.5, |
| Traes.790C095EE.1, | Traes.D1C9CE275.1, | Traes.A84ABE6EF.1, | Traes.503B57D77.1, |
| Traes.C35CABF69.1, | Traes.0190EDEFD.1, | Traes.64EAA3388.1, | Traes.865644EC4.7, |
| Traes.FA727026F.2, | Traes.4D42B475B.2, | Traes.08603B02C.2, | Traes.82133897D.1, |
| Traes.EED456A17.2, | Traes.C9EA93E10.1, | Traes.13C2391DC.2, | Traes.D98C7CE92.1, |
| Traes.5D47DC487.1, | Traes.A20157EC5.1, | Traes.92939B028.1, | Traes.999E12D5D.1, |
| Traes.B2F166A31.1, | Traes.06889C77D.2, | Traes.1EDDDC063.6, | Traes.E82B2B6AC.1, |
| Traes.39E5EF501.2, | Traes.4EFA77404.1, | Traes.B2256B77F.3, | Traes.EC75E7941.8, |
| Traes.17C8D2707.2, | Traes.2125E90F3.6, | Traes.10A8CAB27.1, | Traes.C7C1FFE0C.1, |
| Traes.EFE6EFEDF.1, | Traes.CFCC2012F.1, | Traes.2EDF05396.4, | Traes.DB1546316.3, |
| Traes.4B9F0CBBF.1, | Traes.808AD9543.2, | Traes.976FAF094.2, | Traes.4E8553041.2, |
| Traes.9C9D677D4.1, | Traes.07B7BEEC31.1, | Traes.5A4046554.5, | Traes.7773A9BFB.7, |
| Traes.1360F98E7.1, | Traes.1AE458202.2, | Traes.82E82F8F9.2, | Traes.C8C8B8DA9.1, |
| Traes.1141C575C.4, | Traes.8E8190A0F.4, | Traes.6E13A3C8C.2, | Traes.3C04C3D2F.7, |
| Traes.76515C538.1, | Traes.FD9C65DC01.1, | Traes.9E032AF27.1, | Traes.8719DBF92.1, |
| Traes.FC1A52B36.1, | Traes.95CDF7628.1, | Traes.98A6A7CC2.1, | Traes.3C62DC707.1, |
| Traes.660FDCED9.6, | Traes.0535EFFBE.1, | Traes.19B90732F.1, | Traes.D238844BB.1, |
| Traes.4E68C2154.5, | Traes.0644187E5.1, | Traes.A3420082C.1, | Traes.70CCAB0EF.3, |
| Traes.A92573EF7.7, | Traes.546DFB91B.4, | Traes.EEC3977E0.3, | Traes.3BC4F011C.1, |
| Traes.F0A1D1118.2, | Traes.4490ED4C6.1, | Traes.B5AED6ABA.7, | Traes.2D464CB3E.1, |
| Traes.FDBBC5E8F.2, | Traes.653FEEC33.1, | Traes.D50CC6A1D.1, | Traes.D50CC6A1D1.1, |

| | | | | |
|--------|--|---|---|--|
| | Traes.C74DAC3CE.1, Traes.32F10AE2C.1, Traes.BB4298457.2 | Traes.38B29E4C9.2, Traes.BF90D232B.1, | Traes.DA7C4AFF6.11, Traes.E74A51BAE.1, Traes.169CE67D8.1, | Traes.DEE69C6AC.1, |
| 2R-MYB | Traes.DFCF4A15A.1, Traes.E635B0A281.1, Traes.9BF07972C.2, Traes.429583AEC.1, Traes.FE8B8ABC4.1, Traes.2EE7C2628.10, Traes.962A9D448.1, Traes.605C25CDF.2, Traes.D41CB81EA.1, Traes.92CBBE968.1, Traes.57F246ADF.1, Traes.A79A68739.1, Traes.61B920833.1, Traes.36CD3229A.3, Traes.934488D20.1, Traes.CC403D182.2, Traes.FCDEFA244.1, Traes.20EC9096A.1, Traes.1A93B0C96.1, Traes.7C1FD879C.2, Traes.04D939077.1, Traes.486D0D865.1, Traes.F0688BFDE.1, Traes.731C703DE.6, Traes.7183519F8.1, Traes.1CD39D4D0.2, Traes.FDFCBA57D1.1, Traes.C1D4586B1.2, Traes.469ED3135.1, Traes.CF98E922B.2, Traes.7A841CAD2.1, Traes.0AD4A7A87.1, Traes.54E6F0446.1, Traes.B41FDD6AA.4, Traes.CD74215DB.1, Traes.0A21FB42C.1, Traes.AAFB56987.2, Traes.BB730675A.1, Traes.1868E2A6C.9, Traes.7BFAC49C2.5, Traes.E8D2BD66E.1, Traes.3D67D3661.2, | Traes.B181F1FD2.1, Traes.3F5D36630.1, Traes.7D519210E.1, Traes.189002AB8.1, Traes.49959692B1.1, Traes.A8AF980F3.1, Traes.557E7700B.4, Traes.29EF04226.1, Traes.14C563681.1, Traes.8F05AE571.3, Traes.5BD0D4BD1.1, Traes.95A52A87F.1, Traes.5EE86C5BC.1, Traes.CC5803BED.3, Traes.5A0300CE0.1, Traes.CFEE687CF.1, Traes.2CB91C54A.1, Traes.8F3BD4450.1, Traes.91299CB97.1, Traes.BDECC07BD.21, Traes.F83CB32DD.3, Traes.41B71F83C.1, Traes.E5B3B79F7.1, Traes.5B57EF9FC.3, Traes.C13753B31.2, Traes.90A30CBB4.1, Traes.30D8E6BE2.3, Traes.41CBE9959.2, Traes.A0676BAEA.1, Traes.2714E3604.1, Traes.DACD935B2.1, Traes.2BA02CAA9.1, Traes.499F64524.1, Traes.F6E1A4F88.1, Traes.D764DEA51.3, Traes.D85C0EF26.6, Traes.E4294BADC.1, Traes.560CCE975.1, Traes.825A1B8BD.1, Traes.5562B97F7.2, | Traes.F1B450FA4.4, Traes.0D6CD031E.3, Traes.90B64301A.5, Traes.56F30392D.1, Traes.0ECE7A421.1, Traes.0B2C5ADF6.3, Traes.7E2D1D34C.2, Traes.C4F9BCFA2.1, Traes.A337F362A.1, Traes.C964675DE.1, Traes.D28CCE3B8.1, Traes.8954A60B6.1, Traes.604FE7639.1, Traes.8008803A5.1, Traes.FD8C2F815.3, Traes.1D036F8B5.1, Traes.57D51731D.3, Traes.AA6863F0D.1, Traes.926486EE0.1, Traes.545A5716E.1, Traes.46F83C41D.1, Traes.AD4395F8F.1, Traes.2A5B4C4C4.4, Traes.3C4ECAB6D.7, Traes.FF1508B19.1, Traes.5A2DB8F78.1, Traes.A0EC5D808.2, Traes.47E2D90AC.1, Traes.1DB727AD1.1, Traes.25726E5E7.1, Traes.2D4100475.1, Traes.8BAAC240D.1, Traes.62CC650D3.1, Traes.AED68C680.6, Traes.35241DE8D.1, Traes.1521D205A.1, Traes.36AF74187.2, Traes.52227091B.1, | Traes.50335C9A8.1, Traes.8E4A831B6.1, Traes.02507996C.1, Traes.5E49D47AF.1, Traes.2CD01D459.1, Traes.ADB23D42F.1, Traes.711044AD5.1, Traes.CA02DC5B2.1, Traes.46D39C394.5, Traes.25C93FD291.1, Traes.AF9357B4C.2, Traes.901181FDD.4, Traes.8BF29D46C.1, Traes.1FA87027B.1, Traes.D05736670.7, Traes.152A7186A.1, Traes.3834B629A.1, Traes.E5A9546C9.1, Traes.6253482BD.5, Traes.7755E4A8A.1, Traes.FAF2AE9FB.1, Traes.E3BF20F0D.7, Traes.532725AD5.1, Traes.5BAD8947E.1, Traes.FBC0ED0EE.2, Traes.855A1170C.3, Traes.8ABCB84A7.2, Traes.B2C9F123A.1, Traes.E1E541767.2, Traes.91CCCCF6DB1.1, Traes.3883DC244.1, Traes.F49830790.1, Traes.FA7059723.1, Traes.1161E1D2E.4, Traes.918A8F357.1, Traes.7C031019E.1, Traes.4D9406708.1, Traes.4EFBA88E4.1, Traes.6BD0572DF.1, Traes.A848F629F.2, Traes.25C93FD29.1, Traes.E2F8D46CE.4, |

| | |
|--------|--|
| | Traes.343F2D219.1, Traes.759D8DDBB.2, Traes.59260A671.2, Traes.50CECDF43.1, Traes.361925B62.1, Traes.54D562BC2.1, Traes.7CEC6A8D7.1, Traes.5690C215A.5, Traes.25FD0FFB4.1, Traes.097BADCFE.5, Traes.D10CBA40D.1, Traes.230A3A2D0.18, Traes.1EF547639.1, Traes.E1D3D8DAA1.1, Traes.54D11D5E7.1, Traes.A03AB7608.2, Traes.9023F3504.4, Traes.82024A6C1.1, Traes.5F17B1022.2, Traes.28010F812.1, Traes.7E91DE546.3, Traes.49959692B.1, Traes.88BBF0441.1, Traes.03F3475CD.1, Traes.A014E9069.1, Traes.89BA7115C.1, Traes.B68E59AAB.1, Traes.3569AEDFB.1, Traes.9430AAD52.12, Traes.91CCCF6DB.1, Traes.B01AE830F.1, Traes.2D2135570.1, Traes.C843D1851.1, Traes.CE61B9510.1, Traes.79F1B50DF.1, Traes.7800B74E3.3, Traes.47E2D90AC1.1, Traes.8DF2537B8.1, Traes.67FD04DA0.1, Traes.FD6DBA41D.1, Traes.DE2C70E4C.2, Traes.B44ECE28C.1, Traes.DAA2104F5.2, Traes.25320ED72.1, Traes.B8E8A2F55.3, Traes.8B52D54FD.2, Traes.E27ECBC6E.2, Traes.5EEED86AD.6, Traes.D1C03C165.1, Traes.FCDEB9A8B.1, Traes.FDFCBA57D.1, Traes.1D7D3D0DE.1, Traes.4EE7DFCCD.1, Traes.0501BC320.5, Traes.4C9807337.1, Traes.967152326.1, Traes.912473A86.2, Traes.C7FD90C13.1, Traes.632EBAD09.1, Traes.65172E704.3, Traes.1EE692FDC.1, Traes.87924B626.5, Traes.61B30E3E4.1, Traes.0BCF482E8.1, Traes.2A12B5E70.1, Traes.40E835A94.3, Traes.40FA27AE7.1, Traes.34A0848F2.1, Traes.D39684C41.2 |
| 3R-MYB | Traes.B26A733D4.1, Traes.09025DA2E.2, Traes.51EBF8930.2, Traes.B6ADF4159.1, Traes.403DBC53C.1, Traes.B594FC28C.7, Traes.386795528.1, Traes.ABF465DDF.1, Traes.6BBC889A1.1, Traes.C25B5DDB4.1, Traes.61D017632.1 |
| 4R-MYB | Traes.78AD0AF8E.5, Traes.4F38323F3.1, Traes.9B80DEC84.1 |

Supplementary Table 4 Distribution of members of the Rice (*Oryza sativa*) MYB family

| Subfamily | Gene ID | | | | |
|-----------|--|---------------|---------------|---------------|---------------|
| 1R-MYB | Os01g50110.1, | Os06g10350.1, | Os01g04930.1, | Os05g37730.1, | Os05g37060.1, |
| | Os01g63460.1, | Os07g30130.1, | Os06g14010.1, | Os01g64360.1, | Os04g58020.1, |
| | Os01g11200.1, | Os05g02420.2, | Os03g62100.1, | Os06g19980.1, | Os01g34060.1, |
| | Os06g51260.1, | Os03g19630.1, | Os01g07430.1, | Os04g49450.1, | Os01g06320.1, |
| | Os02g30700.1, | Os06g14710.1, | Os02g46030.1, | Os10g41260.1, | Os03g53960.2, |
| | Os02g10060.1, | Os05g03550.1, | Os03g51220.1, | Os03g25304.1, | Os08g06110.2, |
| | Os01g09640.1, | Os04g30890.1, | Os11g08080.2, | Os07g25150.1, | Os05g10690.1, |
| | Os08g05510.2, | Os05g37050.1, | Os08g04840.1, | Os08g06240.1, | Os02g45670.1, |
| | Os10g41200.3, | Os12g07730.1, | Os05g07010.2, | Os06g45840.2, | Os01g41900.2, |
| | Os01g09280.1, | Os06g01670.1, | Os05g51160.2, | Os04g40420.1, | Os01g12700.1, |
| | Os01g40670.2, | Os03g20900.1, | Os01g51154.3, | Os07g49530.1, | Os01g62660.1, |
| | Os07g25710.4, | Os06g07640.1, | Os12g41920.1, | Os01g74020.1, | Os01g43180.1, |
| | Os07g48596.1, | Os07g26150.1, | Os03g62379.1, | Os09g31454.1, | Os04g01970.1, |
| | Os05g40960.1, | Os06g24070.1, | Os03g21240.1, | Os02g47190.1, | Os06g07650.1, |
| | Os10g39550.1, | Os08g39980.1, | Os03g13790.1, | Os03g03760.1, | Os05g34110.1, |
| | Os01g43230.3, | Os09g12770.2, | Os01g13740.1, | Os04g56990.2, | Os04g27410.1, |
| | Os02g04640.1, | Os10g30690.1, | Os08g25820.1, | Os02g43300.1, | Os01g09760.1, |
| | Os03g63890.1, | Os11g01480.1, | Os10g30719.1, | Os01g67770.1, | Os12g01490.1, |
| | Os09g12750.1, | Os03g12350.1, | Os06g40710.1, | Os06g35140.1, | Os02g55320.1, |
| | Os06g49040.1, | Os02g14490.1, | Os06g08440.1, | Os06g07740.1, | Os08g25799.1, |
| | Os05g49240.1, | Os02g34630.2, | Os02g07770.1, | Os04g47750.1, | Os02g07170.1, |
| | Os03g56234.1, | Os02g53670.2, | Os02g08500.1, | Os01g47370.1, | Os12g33950.1, |
| | Os06g08290.1, | Os06g45410.1, | Os03g55760.1, | Os05g41240.1, | Os06g07700.1, |
| | Os06g45890.1, | Os01g44370.1, | Os03g14810.1, | Os02g46940.1, | Os12g39640.1, |
| | Os08g06370.1, | Os06g43910.1, | Os03g55590.1, | Os08g08000.1, | Os10g32600.1, |
| | Os02g22020.1, | Os08g33050.1, | Os07g02800.2, | Os08g33750.1, | Os01g08160.1, |
| | Os04g47890.1, | Os09g23200.1, | Os04g45940.1, | Os02g57270.1, | Os02g45080.1, |
| | Os07g04430.1, | Os03g43800.2, | Os08g08130.1, | Os03g45194.1, | Os05g37040.1, |
| | Os01g36850.1, Os09g14880.1, Os05g50350.1, Os02g47744.1 | | | | |
| 2R-MYB | Os11g45740.1, | Os02g17190.1, | Os03g20090.1, | Os08g37970.1, | Os11g35390.1, |
| | Os02g36890.1, | Os02g02370.1, | Os07g43420.1, | Os02g49250.1, | Os06g06740.1, |
| | Os03g26130.1, | Os05g41166.1, | Os07g14110.1, | Os01g19330.1, | Os12g38400.2, |
| | Os01g63160.1, | Os01g36460.1, | Os12g07640.1, | Os07g43580.1, | Os02g09480.1, |
| | Os12g03150.1, | Os08g05520.1, | Os02g42870.1, | Os01g63680.1, | Os04g46384.1, |
| | Os02g54520.1, | Os11g10130.1, | Os04g50770.1, | Os01g03720.1, | Os03g04900.1, |
| | Os01g50720.1, | Os08g43550.1, | Os07g44090.3, | Os01g52410.1, | Os05g35500.1, |
| | Os06g43090.1, | Os03g25550.1, | Os01g74410.1, | Os03g38210.1, | Os06g11780.1, |
| | Os05g46610.1, | Os03g13310.1, | Os07g48870.1, | Os02g51799.1, | Os01g19970.1, |
| | Os07g12130.1, | Os02g41510.1, | Os03g56090.1, | Os05g48010.1, | Os08g33150.1, |
| | Os05g28320.1, | Os04g28090.1, | Os09g36730.1, | Os02g49986.1, | Os03g27090.1, |
| | Os08g33940.1, | Os09g26170.1, | Os10g35660.1, | Os03g19120.1, | Os01g09590.1, |
| | Os04g39470.1, | Os03g18480.1, | Os04g43680.1, | Os04g45060.1, | Os03g29614.1, |

| | |
|--------|--|
| | Os01g16810.1, Os07g31470.1, Os04g42950.1, Os01g74590.1, Os12g37690.1, Os11g47460.1, Os01g51260.1, Os09g23620.1, Os08g34960.1, Os07g37210.1, Os04g50680.1, Os06g02250.1, Os05g04210.1, Os08g15020.1, Os12g33070.1, Os05g49310.1, Os02g46780.1, Os01g18240.1, Os08g33800.1, Os08g33660.1, Os04g38740.1, Os10g33810.1, Os09g24800.1, Os12g07610.1, Os07g25370.1, Os12g37970.1, Os06g14670.1, Os06g46560.1, Os06g40330.1, Os02g42850.2, Os06g14700.1, Os11g03440.1, Os03g51110.1, Os09g36250.1, Os05g04820.1, Os01g45090.1, Os09g01960.1, Os01g65370.1, Os01g07450.1, Os04g45020.1, Os02g40530.1, Os01g49160.1, Os01g59660.3 |
| 3R-MYB | Os05g38460.1, Os12g13570.1, Os10g20990.1, Os01g12860.1, Os01g62410.1 |
| 5R-MYB | Os07g04700.6 |

Supplementary Table 5 Distribution of members of the Millet (*Setaria italica*) MYB family

| Subfamily | Gene ID | | | |
|-----------|-------------------|-------------------|-------------------|-------------------|
| 1R-MYB | Seita.9G171200.1, | Seita.5G385300.1, | Seita.1G077900.1, | Seita.3G222600.1, |
| | Seita.5G098300.1, | Seita.2G140900.1, | Seita.3G016200.1, | Seita.3G225500.1, |
| | Seita.5G391300.1, | Seita.5G183700.1, | Seita.5G044000.1, | Seita.2G079500.1, |
| | Seita.4G288100.1, | Seita.7G212900.1, | Seita.1G275400.1, | Seita.3G325900.1, |
| | Seita.3G048100.3, | Seita.6G054000.1, | Seita.1G051900.1, | Seita.6G055700.1, |
| | Seita.9G112600.2, | Seita.8G060100.1, | Seita.6G148300.1, | Seita.9G319600.1, |
| | Seita.5G135900.1, | Seita.6G063100.2, | Seita.9G090600.1, | Seita.2G103800.1, |
| | Seita.7G065700.1, | Seita.1G272700.5, | Seita.3G111800.1, | Seita.6G065500.1, |
| | Seita.2G302300.1, | Seita.9G321800.1, | Seita.2G104000.1, | Seita.4G056600.1, |
| | Seita.5G110700.1, | Seita.4G004600.2, | Seita.7G284300.2, | Seita.4G266800.1, |
| | Seita.4G214200.1, | Seita.5G216800.1, | Seita.4G118600.1, | Seita.3G058100.1, |
| | Seita.3G124200.1, | Seita.2G174300.1, | Seita.4G218000.2, | Seita.5G289500.1, |
| | Seita.2G436900.1, | Seita.5G209300.1, | Seita.7G138800.1, | Seita.2G118400.1, |
| | Seita.9G419000.1, | Seita.9G113900.2, | Seita.5G379100.1, | Seita.9G113800.1, |
| | Seita.7G163000.1, | Seita.5G114000.1, | Seita.3G199300.1, | Seita.5G003100.1, |
| | Seita.9G416300.1, | Seita.7G223500.1, | Seita.5G133800.1, | Seita.5G468100.1, |
| | Seita.1G286400.1, | Seita.4G156200.1, | Seita.3G354900.1, | Seita.9G238700.1, |
| | Seita.9G554300.1, | Seita.3G242400.1, | Seita.9G238800.1, | Seita.9G473800.1, |
| | Seita.5G238400.1, | Seita.6G206100.1, | Seita.3G029000.1, | Seita.5G136900.1, |
| | Seita.9G158300.2, | Seita.2G168900.1, | Seita.4G132300.1, | Seita.2G254700.1, |
| | Seita.4G266400.1, | Seita.4G185800.1, | Seita.9G467400.1, | Seita.6G121500.1, |
| | Seita.3G058200.1, | Seita.7G332300.1, | Seita.4G265300.1, | Seita.1G190100.1, |
| | Seita.5G419200.2, | Seita.2G444900.2, | Seita.1G169900.1, | Seita.5G259700.1, |
| | Seita.5G260200.1, | Seita.5G452200.1, | Seita.8G019800.1, | Seita.9G340000.1, |
| | Seita.9G485100.1, | Seita.4G270600.1, | Seita.2G168800.2, | Seita.1G351300.1, |
| | Seita.5G238500.1, | Seita.1G021500.1, | Seita.4G050700.1, | Seita.4G175600.1, |
| | Seita.1G142100.2, | Seita.6G120200.1, | Seita.4G085600.1, | Seita.1G338400.2, |
| | Seita.1G069400.1, | Seita.9G308900.1, | Seita.9G080000.1, | Seita.1G092500.1, |
| | Seita.4G273600.2, | Seita.1G061200.1, | Seita.9G078300.2, | Seita.8G160000.2, |
| | Seita.9G231000.1, | Seita.3G143100.1, | Seita.7G201600.2, | Seita.1G283000.1, |
| | Seita.3G049300.1, | Seita.3G134100.1, | Seita.7G029600.1, | Seita.3G373000.1, |
| | Seita.6G053400.2, | Seita.3G228700.1, | Seita.9G493400.2, | Seita.9G165800.2, |
| | Seita.9G040100.1, | Seita.4G215900.1, | Seita.5G259200.1, | Seita.9G536000.1, |
| | Seita.6G152600.1, | Seita.3G163600.1, | Seita.3G370000.1, | Seita.1G146600.1, |
| | Seita.9G361100.1, | Seita.5G124700.1, | Seita.7G135900.1, | Seita.3G133900.1, |
| | Seita.4G157600.1, | Seita.2G197100.1, | Seita.1G268700.2, | Seita.4G151500.1, |
| | Seita.2G013500.1, | Seita.5G024000.4, | Seita.4G198600.1, | Seita.4G198500.1, |
| | Seita.9G318500.1, | Seita.9G047800.1, | Seita.5G468700.2, | Seita.7G272200.1, |
| | Seita.3G195600.1, | Seita.7G185800.1, | Seita.3G121600.2, | Seita.4G148800.1, |
| | Seita.1G184800.1 | | | |
| 2R-MYB | Seita.6G168800.1, | Seita.1G250900.1, | Seita.3G055800.1, | Seita.3G154700.1, |
| | Seita.5G355300.1, | Seita.6G158800.1, | Seita.7G179800.1, | Seita.7G284800.1, |

| | |
|--------|--|
| | Seita.3G161500.1, Seita.2G199900.1, Seita.7G320700.2, Seita.7G284900.1, Seita.4G173600.1, Seita.2G199800.1, Seita.8G057800.1, Seita.6G211500.1, Seita.7G279500.1, Seita.7G030000.1, Seita.6G160100.1, Seita.2G200200.1, Seita.1G007300.3, Seita.2G438400.1, Seita.3G142100.1, Seita.5G192400.1, Seita.2G351400.1, Seita.5G043900.1, Seita.6G238400.1, Seita.9G181600.1, Seita.5G043800.1, Seita.3G333800.1, Seita.9G425100.1, Seita.9G054400.1, Seita.9G204400.1, Seita.5G286200.1, Seita.2G400600.1, Seita.4G205800.1, Seita.3G232500.1, Seita.4G261400.1, Seita.9G160300.1, Seita.2G320600.1, Seita.1G117000.1, Seita.6G154200.1, Seita.2G204300.1, Seita.9G544000.1, Seita.7G161400.1, Seita.8G101000.1, Seita.2G286400.1, Seita.2G399900.2, Seita.5G239400.1, Seita.7G219700.1, Seita.9G384800.1, Seita.4G115200.1, Seita.6G239700.1, Seita.7G285100.1, Seita.7G057500.1, Seita.1G324800.1, Seita.1G209100.1, Seita.5G274200.1, Seita.7G307500.1, Seita.3G350800.1, Seita.2G289900.1, Seita.3G408700.1, Seita.3G331100.1, Seita.8G237700.1, Seita.9G368500.1, Seita.3G062200.1, Seita.5G239300.1, Seita.1G344700.1, Seita.6G063000.1, Seita.2G404100.1, Seita.5G290600.2, Seita.1G250600.1, Seita.6G190300.1, Seita.5G118900.1, Seita.2G138700.1, Seita.1G120500.1, Seita.4G008000.1, Seita.8G153200.1, Seita.7G167300.1, Seita.7G179600.1, Seita.9G074800.1, Seita.7G132600.1, Seita.5G283200.1, Seita.5G301200.1, Seita.5G034500.1, Seita.2G213200.1, Seita.5G386900.1, Seita.1G374700.1, Seita.7G220500.1, Seita.3G079100.1, Seita.9G113200.1, Seita.4G221900.1, Seita.2G200100.1, Seita.7G188300.1, Seita.9G476600.1, Seita.9G390800.1, Seita.4G086300.1, Seita.1G281500.1, Seita.7G125200.1, Seita.6G097100.1, Seita.9G432200.1, Seita.5G087200.1, Seita.5G382600.1, Seita.3G051800.1, Seita.5G025200.1, Seita.5G119000.1, Seita.1G239400.1, Seita.1G309600.1, Seita.5G028900.1, Seita.9G222100.1, Seita.3G361000.1, Seita.4G091600.1, Seita.3G062400.1, Seita.6G158000.1, Seita.3G278400.1, Seita.3G223400.1, Seita.3G402900.1, Seita.5G398000.1, Seita.5G135700.1, Seita.1G236400.1, Seita.8G244100.1, Seita.8G006900.1 |
| 3R-MYB | Seita.3G217600.1, Seita.5G008900.1, Seita.5G377100.1, Seita.3G079800.1 |
| 4R-MYB | Seita.1G007400.3, Seita.2G028600.1 |

Supplementary Table 6 Distribution of members of the Tomato (*Solanum lycopersicum*) MYB family

| Subfamily | Gene ID | | | |
|-----------|---------------------|---------------------|---------------------|---------------------|
| 1R-MYB | Solyc05g013430.1.1, | Solyc06g033870.1.1, | Solyc11g006720.2.1, | Solyc09g014250.3.1, |
| | Solyc03g096350.3.1, | Solyc06g076770.3.1, | Solyc05g055240.3.1, | Solyc10g076820.2.1, |
| | Solyc02g086690.3.1, | Solyc05g052610.3.1, | Solyc04g008870.3.1, | Solyc11g071500.3.1, |
| | Solyc03g119740.3.1, | Solyc04g050080.1.1, | Solyc12g019840.1.1, | Solyc08g007300.3.1, |
| | Solyc04g049120.4.1, | Solyc01g009650.1.1, | Solyc12g019810.1.1, | Solyc12g088610.1.1, |
| | Solyc02g082390.1.1, | Solyc06g075660.4.1, | Solyc06g005310.3.1, | Solyc02g036370.3.1, |
| | Solyc03g098320.4.1, | Solyc12g005890.3.1, | Solyc10g005080.3.1, | Solyc03g113530.3.1, |
| | Solyc05g054200.4.1, | Solyc04g082760.3.1, | Solyc12g008800.3.1, | Solyc10g084370.3.1, |
| | Solyc06g009430.3.1, | Solyc01g109510.3.1, | Solyc09g007580.3.1, | Solyc07g047610.3.1, |
| | Solyc07g026680.2.1, | Solyc11g050730.1.1, | Solyc04g005100.3.1, | Solyc08g065380.3.1, |
| | Solyc10g019150.1.1, | Solyc01g095030.3.1, | Solyc03g113620.3.1, | Solyc06g071230.3.1, |
| | Solyc11g013560.1.1, | Solyc11g013620.1.1, | Solyc01g096700.4.1, | Solyc08g078340.3.1, |
| | Solyc06g060120.3.1, | Solyc05g013420.1.1, | Solyc12g044610.2.1, | Solyc06g036300.4.1, |
| | Solyc02g064630.4.1, | Solyc02g082375.1.1, | Solyc09g007570.3.1, | Solyc01g106940.4.1, |
| | Solyc07g040920.2.1, | Solyc09g072830.4.1, | Solyc04g050070.3.1, | Solyc11g069850.3.1, |
| | Solyc10g085620.2.1, | Solyc01g065540.3.1, | Solyc06g008200.3.1, | Solyc06g034030.3.1, |
| | Solyc06g082510.3.1, | Solyc09g007990.3.1, | Solyc10g080960.1.1, | Solyc01g073950.4.1, |
| | Solyc05g054390.4.1, | Solyc10g083340.3.1, | Solyc06g005680.4.1, | Solyc11g022470.2.1, |
| | Solyc12g098370.2.1, | Solyc06g051060.4.1, | Solyc09g005030.3.1, | Solyc08g077230.3.1, |
| | Solyc11g067280.2.1, | Solyc10g078310.2.1, | Solyc05g055940.3.1, | Solyc06g066180.4.1, |
| | Solyc02g085145.1.1, | Solyc12g019900.2.1, | Solyc06g076350.3.1, | Solyc07g045000.4.1, |
| | Solyc11g044320.2.1, | Solyc03g121840.3.1, | Solyc01g095640.2.1, | Solyc04g050100.1.1, |
| | Solyc07g053630.4.1, | Solyc06g061030.3.1, | Solyc12g099380.3.1, | Solyc03g121990.4.1, |
| | Solyc11g072330.2.1, | Solyc09g091880.4.1, | Solyc04g076360.4.1, | Solyc08g076010.4.1, |
| | Solyc09g008100.4.1, | Solyc04g008050.4.1, | Solyc09g005370.1.1, | Solyc05g014260.3.1, |
| | Solyc12g087970.2.1, | Solyc04g008480.2.1, | Solyc01g108300.3.1, | Solyc10g080920.2.1, |
| | Solyc10g078720.2.1, | Solyc05g007890.4.1, | Solyc03g006150.2.1, | Solyc12g017370.3.1, |
| | Solyc10g076460.2.1, | Solyc02g076670.3.1, | Solyc07g052490.4.1, | Solyc01g079210.3.1, |
| | Solyc04g015290.3.1, | Solyc05g009720.3.1, | Solyc02g090400.4.1, | Solyc10g080300.1.1, |
| | Solyc12g010330.2.1, | Solyc06g069560.3.1, | Solyc12g089170.3.1, | Solyc04g080500.3.1, |
| | Solyc12g006280.3.1, | Solyc10g052470.1.1, | Solyc01g067560.3.1, | Solyc03g115440.3.1, |
| | Solyc12g089190.1.1, | Solyc05g051060.3.1, | Solyc01g109690.1.1, | Solyc12g006800.2.1, |
| | Solyc06g075670.1.1, | Solyc02g080860.3.1, | Solyc11g039750.3.1, | Solyc12g098160.2.1, |
| | Solyc07g005140.4.1, | Solyc07g049640.3.1, | Solyc04g079600.3.1, | Solyc06g066340.4.1, |
| | Solyc03g083340.3.1, | Solyc08g005260.2.1, | Solyc04g150172.1.1, | Solyc06g076270.3.1, |
| | Solyc11g011770.3.1, | Solyc08g007170.1.1, | Solyc02g078810.4.1, | Solyc05g049960.4.1, |
| | Solyc06g083420.3.1, | Solyc11g017360.3.1, | Solyc07g009110.3.1, | Solyc04g011650.3.1, |
| | Solyc10g080460.2.1, | Solyc01g068540.3.1, | Solyc08g076400.3.1, | Solyc07g056120.3.1, |
| | Solyc02g080740.3.1, | Solyc01g091810.1.1, | Solyc09g060080.4.1, | Solyc12g043090.3.1, |
| | Solyc05g054410.4.1, | Solyc07g019550.1.1, | Solyc01g088820.2.1, | Solyc02g080730.2.1, |
| | Solyc06g005590.4.1 | | | |
| 2R-MYB | Solyc06g065100.3.1, | Solyc05g007160.3.1, | Solyc02g067760.4.1, | Solyc01g094360.3.1, |

Solyc04g078420.1.1, Solyc04g009950.3.1, Solyc12g049350.2.1, Solyc10g055410.2.1,
 Solyc01g009070.3.1, Solyc10g086250.2.1, Solyc05g051550.2.1, Solyc05g014290.4.1,
 Solyc02g079280.3.1, Solyc10g081490.2.1, Solyc03g112890.1.1, Solyc03g093930.4.1,
 Solyc08g065910.1.1, Solyc12g049300.2.1, Solyc08g079270.3.1, Solyc06g009410.3.1,
 Solyc03g059200.2.1, Solyc07g053240.3.1, Solyc12g099140.2.1, Solyc08g081500.3.1,
 Solyc10g086290.3.1, Solyc07g052300.3.1, Solyc09g008390.3.1, Solyc04g074170.3.1,
 Solyc12g008670.2.1, Solyc04g077260.3.1, Solyc07g055000.2.1, Solyc07g008010.4.1,
 Solyc09g090790.3.1, Solyc06g076840.3.1, Solyc04g005600.3.1, Solyc06g069850.3.1,
 Solyc10g083900.2.1, Solyc02g091980.2.1, Solyc03g112390.3.1, Solyc09g010840.1.1,
 Solyc10g019260.3.1, Solyc01g010910.2.1, Solyc05g053330.3.1, Solyc06g053610.3.1,
 Solyc08g008480.4.1, Solyc11g065840.3.1, Solyc04g079360.1.1, Solyc12g099120.3.1,
 Solyc06g071690.3.1, Solyc11g073120.2.1, Solyc07g054980.3.1, Solyc01g087130.4.1,
 Solyc09g090130.3.1, Solyc04g056310.3.1, Solyc05g007690.2.1, Solyc02g093740.3.1,
 Solyc03g019800.4.1, Solyc06g009480.3.1, Solyc08g076710.3.1, Solyc04g064540.4.1,
 Solyc06g083900.3.1, Solyc06g005330.3.1, Solyc05g007710.3.1, Solyc05g009230.3.1,
 Solyc01g005660.3.1, Solyc06g074920.3.1, Solyc03g093890.3.1, Solyc08g082890.3.1,
 Solyc04g014470.3.1, Solyc11g011050.2.1, Solyc12g096200.2.1, Solyc10g086270.2.1,
 Solyc02g088190.4.1, Solyc07g006750.3.1, Solyc10g008700.3.1, Solyc05g052850.3.1,
 Solyc01g079620.4.1, Solyc03g005570.3.1, Solyc05g007870.3.1, Solyc05g048830.3.1,
 Solyc10g005760.3.1, Solyc11g069030.3.1, Solyc04g005710.3.1, Solyc12g005640.2.1,
 Solyc02g082040.3.1, Solyc09g055650.3.1, Solyc08g066190.2.1, Solyc01g057910.3.1,
 Solyc09g011780.3.1, Solyc03g119370.2.1, Solyc02g067340.4.1, Solyc03g116100.3.1,
 Solyc10g005460.3.1, Solyc03g093940.2.1, Solyc01g090530.3.1, Solyc02g087960.3.1,
 Solyc03g025870.3.1, Solyc09g008250.4.1, Solyc12g019910.1.1, Solyc07g054960.2.1,
 Solyc04g050090.1.1, Solyc06g034000.2.1, Solyc01g111500.3.1, Solyc08g005870.2.1,
 Solyc06g074910.3.1, Solyc11g072060.3.1, Solyc04g050000.3.1, Solyc02g092930.1.1,
 Solyc10g005550.3.1, Solyc10g005240.3.1, Solyc06g071520.1.1, Solyc02g089190.2.1,
 Solyc12g099130.2.1, Solyc10g086260.3.1, Solyc03g121740.3.1, Solyc07g054840.4.1,
 Solyc10g044680.2.1, Solyc10g081320.1.1, Solyc07g053230.3.1, Solyc01g102340.3.1,
 Solyc05g008250.2.1, Solyc04g049740.1.1, Solyc06g009710.4.1, Solyc05g055030.2.1,
 Solyc05g053150.2.1, Solyc08g076700.1.1, Solyc06g073640.4.1

3R-MYB Solyc09g010820.3.1, Solyc08g068320.3.1, Solyc11g071300.2.1, Solyc08g080580.4.1 3

4R-MYB Solyc03g119050.4.1

Supplementary Table 7 Distribution of members of the Potato (*Solanum tuberosum*) MYB family

| Subfamily | Gene ID | | |
|-----------|-----------------------|-----------------------|-----------------------|
| 1R-MYB | Soltu.DM.05G009740.1, | Soltu.DM.09G000550.1, | Soltu.DM.11G006910.1, |
| | Soltu.DM.03G012780.1, | Soltu.DM.06G032070.1, | Soltu.DM.10G019890.1, |
| | Soltu.DM.05G025810.1, | Soltu.DM.05G022630.1, | Soltu.DM.05G010590.1, |
| | Soltu.DM.02G033070.1, | Soltu.DM.04G004780.1, | Soltu.DM.12G022970.1, |
| | Soltu.DM.03G023990.1, | Soltu.DM.03G034270.1, | Soltu.DM.11G024310.1, |
| | Soltu.DM.02G033800.1, | Soltu.DM.04G008810.1, | Soltu.DM.03G010730.1, |
| | Soltu.DM.04G018230.1, | Soltu.DM.08G000740.1, | Soltu.DM.02G022350.1, |
| | Soltu.DM.10G000080.2, | Soltu.DM.06G031130.1, | Soltu.DM.08G003000.1, |
| | Soltu.DM.06G004450.1, | Soltu.DM.05G024900.1, | Soltu.DM.09G006090.1, |
| | Soltu.DM.02G004510.1, | Soltu.DM.03G019030.1, | Soltu.DM.12G009150.1, |
| | Soltu.DM.03G027460.1, | Soltu.DM.07G018870.1, | Soltu.DM.04G038000.2, |
| | Soltu.DM.04G019340.1, | Soltu.DM.12G025790.1, | Soltu.DM.10G023770.1, |
| | Soltu.DM.01G035880.1, | Soltu.DM.01G049290.1, | Soltu.DM.07G015650.1, |
| | Soltu.DM.04G000120.1, | Soltu.DM.09G006100.1, | Soltu.DM.11G010450.1, |
| | Soltu.DM.07G010910.1, | Soltu.DM.08G013550.1, | Soltu.DM.06G026360.1, |
| | Soltu.DM.11G010440.1, | Soltu.DM.05G024580.3, | Soltu.DM.05G004710.2, |
| | Soltu.DM.01G034130.1, | Soltu.DM.03G027560.1, | Soltu.DM.03G024010.1, |
| | Soltu.DM.09G006060.1, | Soltu.DM.06G012330.1, | Soltu.DM.09G006080.1, |
| | Soltu.DM.06G017030.1, | Soltu.DM.08G024350.1, | Soltu.DM.05G009710.1, |
| | Soltu.DM.07G018910.1, | Soltu.DM.11G012750.1, | Soltu.DM.12G010020.1, |
| | Soltu.DM.06G013470.1, | Soltu.DM.01G046340.1, | Soltu.DM.05G009730.1, |
| | Soltu.DM.02G007530.1, | Soltu.DM.09G022120.3, | Soltu.DM.07G012030.1, |
| | Soltu.DM.10G021990.4, | Soltu.DM.04G019420.1, | Soltu.DM.03G020200.1, |
| | Soltu.DM.01G020310.1, | Soltu.DM.09G010050.1, | Soltu.DM.11G023110.1, |
| | Soltu.DM.03G002920.1, | Soltu.DM.06G001980.1, | Soltu.DM.09G005630.2, |
| | Soltu.DM.12G023200.1, | Soltu.DM.10G003970.2, | Soltu.DM.10G026430.1, |
| | Soltu.DM.05G024870.1, | Soltu.DM.10G024990.2, | Soltu.DM.03G014490.1, |
| | Soltu.DM.03G036640.1, | Soltu.DM.06G003930.1, | Soltu.DM.02G005490.1, |
| | Soltu.DM.08G023050.3, | Soltu.DM.11G012550.1, | Soltu.DM.11G021700.1, |
| | Soltu.DM.12G002760.1, | Soltu.DM.10G029880.1, | Soltu.DM.06G010110.1, |
| | Soltu.DM.05G009700.1, | Soltu.DM.05G026640.1, | Soltu.DM.02G021450.2, |
| | Soltu.DM.09G007960.1, | Soltu.DM.11G009850.1, | Soltu.DM.06G031660.1, |
| | Soltu.DM.06G019150.3, | Soltu.DM.11G025400.3, | Soltu.DM.07G020230.3, |
| | Soltu.DM.11G016710.2, | Soltu.DM.01G022460.1, | Soltu.DM.09G002650.1, |
| | Soltu.DM.09G008910.1, | Soltu.DM.06G018400.2, | Soltu.DM.09G028940.1, |
| | Soltu.DM.06G032820.1, | Soltu.DM.07G014720.1, | Soltu.DM.01G028200.1, |
| | Soltu.DM.03G036800.1, | Soltu.DM.05G008880.1, | Soltu.DM.05G010540.2, |
| | Soltu.DM.04G004250.1, | Soltu.DM.05G005130.1, | Soltu.DM.12G005350.1, |
| | Soltu.DM.07G016940.1, | Soltu.DM.04G003420.1, | Soltu.DM.04G015060.1, |
| | Soltu.DM.08G021740.2, | Soltu.DM.07G005530.1, | Soltu.DM.10G029270.1, |
| | Soltu.DM.01G025160.2, | Soltu.DM.12G020640.7, | Soltu.DM.03G001760.1, |
| | Soltu.DM.10G026470.1, | Soltu.DM.09G005500.2, | Soltu.DM.10G007050.1, |

2R-MYB

| | | |
|-----------------------|-----------------------|-----------------------|
| Soltu.DM.02G005520.1, | Soltu.DM.02G022330.1, | Soltu.DM.06G030300.1, |
| Soltu.DM.04G030970.3, | Soltu.DM.01G047820.1, | Soltu.DM.02G015850.1, |
| Soltu.DM.02G025020.1, | Soltu.DM.10G019380.1, | Soltu.DM.02G005500.1, |
| Soltu.DM.05G002670.1, | Soltu.DM.04G010320.1, | Soltu.DM.12G027730.1, |
| Soltu.DM.12G028120.1, | Soltu.DM.11G006790.1, | Soltu.DM.11G006880.1, |
| Soltu.DM.12G006610.1, | Soltu.DM.11G006750.1, | Soltu.DM.02G029300.1, |
| Soltu.DM.12G023850.1, | Soltu.DM.07G017910.1, | Soltu.DM.12G005330.1, |
| Soltu.DM.01G049480.1, | Soltu.DM.03G022520.1, | Soltu.DM.03G029550.2, |
| Soltu.DM.10G015800.1, | Soltu.DM.03G029560.2, | Soltu.DM.12G024640.1, |
| Soltu.DM.05G020820.2, | Soltu.DM.08G003720.2, | Soltu.DM.04G035540.1, |
| Soltu.DM.03G016790.1, | Soltu.DM.11G011910.1, | Soltu.DM.07G000240.4, |
| Soltu.DM.04G034570.1, | Soltu.DM.12G001580.1, | Soltu.DM.08G022200.1, |
| Soltu.DM.02G018190.1, | Soltu.DM.06G025590.1, | Soltu.DM.11G001260.2, |
| Soltu.DM.04G035460.1, | Soltu.DM.06G018850.1, | Soltu.DM.10G006170.1, |
| Soltu.DM.05G019580.1, | Soltu.DM.01G049450.1, | Soltu.DM.06G033730.2, |
| Soltu.DM.02G020400.1, | Soltu.DM.06G031580.1, | Soltu.DM.08G001080.1, |
| Soltu.DM.12G028910.1, | Soltu.DM.07G007330.1, | Soltu.DM.10G027110.3, |
| Soltu.DM.01G052130.2, | Soltu.DM.10G026950.1, | Soltu.DM.01G025750.1, |
| Soltu.DM.07G022300.1, | Soltu.DM.12G010580.1, | Soltu.DM.11G019810.1, |
| Soltu.DM.04G007690.1, | Soltu.DM.01G030180.1, | Soltu.DM.09G017870.1, |
| Soltu.DM.05G024910.1 | | |
| Soltu.DM.02G031730.1, | Soltu.DM.11G020060.1, | Soltu.DM.10G011320.1, |
| Soltu.DM.05G005350.1, | Soltu.DM.12G009080.1, | Soltu.DM.03G014040.1, |
| Soltu.DM.04G019440.1, | Soltu.DM.07G018790.1, | Soltu.DM.03G000640.1, |
| Soltu.DM.09G012150.1, | Soltu.DM.09G027500.1, | Soltu.DM.04G001010.1, |
| Soltu.DM.07G002070.1, | Soltu.DM.06G000090.1, | Soltu.DM.01G027520.1, |
| Soltu.DM.06G006730.1, | Soltu.DM.07G018780.1, | Soltu.DM.02G028190.1, |
| Soltu.DM.10G024480.1, | Soltu.DM.01G007140.1, | Soltu.DM.02G009840.1, |
| Soltu.DM.10G020820.1, | Soltu.DM.01G005960.2, | Soltu.DM.08G029830.1, |
| Soltu.DM.03G014010.1, | Soltu.DM.06G012280.1, | Soltu.DM.05G023150.1, |
| Soltu.DM.10G000210.1, | Soltu.DM.03G030200.1, | Soltu.DM.12G025640.1, |
| Soltu.DM.12G001830.1, | Soltu.DM.04G031980.1, | Soltu.DM.05G023310.1, |
| Soltu.DM.03G017510.1, | Soltu.DM.03G033800.1, | Soltu.DM.07G018880.1, |
| Soltu.DM.01G031190.1, | Soltu.DM.10G020850.1, | Soltu.DM.06G000300.1, |
| Soltu.DM.02G027260.1, | Soltu.DM.08G022520.1, | Soltu.DM.01G041210.1, |
| Soltu.DM.12G001820.1, | Soltu.DM.05G004700.1, | Soltu.DM.10G000640.1, |
| Soltu.DM.04G000830.1, | Soltu.DM.09G001100.1, | Soltu.DM.01G009960.1, |
| Soltu.DM.09G002130.1, | Soltu.DM.07G018840.1, | Soltu.DM.04G033180.1, |
| Soltu.DM.06G000270.1, | Soltu.DM.03G036540.1, | Soltu.DM.04G004510.3, |
| Soltu.DM.04G006820.1, | Soltu.DM.04G025530.1, | Soltu.DM.06G026660.1, |
| Soltu.DM.06G012270.1, | Soltu.DM.07G018810.1, | Soltu.DM.03G019140.1, |
| Soltu.DM.07G018770.1, | Soltu.DM.07G018860.1, | Soltu.DM.08G028250.1, |
| Soltu.DM.06G012300.1, | Soltu.DM.02G010440.1, | Soltu.DM.06G030290.1, |
| Soltu.DM.02G021850.1, | Soltu.DM.06G004440.3, | Soltu.DM.05G019450.1, |
| Soltu.DM.08G002970.1, | Soltu.DM.08G003080.1, | Soltu.DM.04G034270.1, |

| | |
|--------|---|
| | Soltu.DM.04G021200.1, Soltu.DM.12G023290.1, Soltu.DM.06G012310.1, Soltu.DM.07G028550.1, Soltu.DM.03G014020.1, Soltu.DM.10G020770.1, Soltu.DM.03G026770.1, Soltu.DM.06G034280.1, Soltu.DM.01G018600.1, Soltu.DM.09G026730.1, Soltu.DM.11G026620.1, Soltu.DM.01G033280.1, Soltu.DM.07G018800.1, Soltu.DM.11G025050.1, Soltu.DM.07G018850.1, Soltu.DM.06G029020.1, Soltu.DM.02G031540.1, Soltu.DM.05G021400.1, Soltu.DM.09G005190.1, Soltu.DM.09G006830.1, Soltu.DM.08G004870.1, Soltu.DM.07G017700.1, Soltu.DM.10G017480.1, Soltu.DM.05G005150.1, Soltu.DM.10G020840.1, Soltu.DM.05G022870.1, Soltu.DM.10G026020.1, Soltu.DM.07G018830.1, Soltu.DM.02G030600.1, Soltu.DM.08G025560.1, Soltu.DM.10G000540.1, Soltu.DM.07G003440.1, Soltu.DM.01G024670.1, Soltu.DM.10G000860.1, Soltu.DM.10G020780.1, Soltu.DM.09G005350.1, Soltu.DM.07G018820.1, Soltu.DM.06G012250.1, Soltu.DM.02G018840.1, Soltu.DM.07G019030.1, Soltu.DM.06G025970.1, Soltu.DM.10G009220.1, Soltu.DM.03G008820.1, Soltu.DM.04G019380.1, Soltu.DM.05G005360.1, Soltu.DM.04G029740.1, Soltu.DM.10G025860.1, Soltu.DM.11G022400.1, Soltu.DM.11G002540.1, Soltu.DM.10G004620.1, Soltu.DM.07G018900.1, Soltu.DM.01G001190.1, Soltu.DM.03G014030.1, Soltu.DM.06G020450.1, Soltu.DM.05G025580.1, Soltu.DM.03G026020.1, Soltu.DM.12G001810.1, Soltu.DM.08G022510.1, Soltu.DM.05G003270.1, Soltu.DM.05G006220.1, Soltu.DM.06G014570.1, Soltu.DM.01G051040.1, Soltu.DM.06G032140.1, Soltu.DM.08G002990.1, Soltu.DM.03G014050.1, Soltu.DM.06G026840.1 |
| 3R-MYB | Soltu.DM.11G023940.1, Soltu.DM.08G027230.1, Soltu.DM.09G002150.1, Soltu.DM.08G017470.1 |
| 4R-MYB | Soltu.DM.03G033440.2 |

Supplementary Table 8 Distribution of members of the Tobacco (*Nicotiana tabacum*) MYB family

| Subfamily | Gene ID | | |
|-----------|----------------------|----------------------|----------------------|
| 1R-MYB | Nitab0000185g0060.1, | Nitab0010633g0050.1, | Nitab0000556g0050.1, |
| | Nitab0007025g0030.1, | Nitab0001505g0030.1, | Nitab0001786g0040.1, |
| | Nitab0005855g0010.1, | Nitab0000153g0080.1, | Nitab0000008g0850.1, |
| | Nitab0001932g0010.1, | Nitab0004030g0060.1, | Nitab0000945g0020.1, |
| | Nitab0001889g0060.1, | Nitab0008712g0020.1, | Nitab0000010g0120.1, |
| | Nitab0001047g0070.1, | Nitab0000556g0040.1, | Nitab0000947g0040.1, |
| | Nitab0000745g0220.1, | Nitab0000278g0160.1, | Nitab0005115g0010.1, |
| | Nitab0003465g0020.1, | Nitab0001271g0020.1, | Nitab0008659g0010.1, |
| | Nitab0004621g0030.1, | Nitab0005396g0070.1, | Nitab0002100g0160.1, |
| | Nitab0001369g0030.1, | Nitab0001769g0160.1, | Nitab0001465g0040.1, |
| | Nitab0000745g0040.1, | Nitab0009579g0010.1, | Nitab0001441g0080.1, |
| | Nitab0000956g0010.1, | Nitab0008556g0010.1, | Nitab0000410g0050.1, |
| | Nitab0000003g0750.1, | Nitab0005352g0010.1, | Nitab0000363g0160.1, |
| | Nitab0000107g0030.1, | Nitab0001372g0100.1, | Nitab0005214g0060.1, |
| | Nitab0000766g0070.1, | Nitab0011191g0010.1, | Nitab0005116g0040.1, |
| | Nitab0004632g0010.1, | Nitab0002184g0040.1, | Nitab0001183g0050.1, |
| | Nitab0000712g0010.1, | Nitab0010431g0030.1, | Nitab0004776g0070.1, |
| | Nitab0000271g0130.1, | Nitab0000119g0220.1, | Nitab0000611g0270.1, |
| | Nitab0008644g0010.1, | Nitab0004081g0040.1, | Nitab0000233g0120.1, |
| | Nitab0000691g0100.1, | Nitab0008949g0040.1, | Nitab0010936g0020.1, |
| | Nitab0000895g0070.1, | Nitab0000185g0040.1, | Nitab0000613g0190.1, |
| | Nitab0005769g0080.1, | Nitab0000642g0100.1, | Nitab0009714g0010.1, |
| | Nitab0000040g0010.1, | Nitab0003973g0010.1, | Nitab0004821g0020.1, |
| | Nitab0002087g0010.1, | Nitab0003096g0050.1, | Nitab0000369g0020.1, |
| | Nitab0000855g0020.1, | Nitab0001180g0220.1, | Nitab0004614g0010.1, |
| | Nitab0000720g0110.1, | Nitab0001707g0110.1, | Nitab0003927g0090.1, |
| | Nitab0007610g0020.1, | Nitab0004168g0010.1, | Nitab0000014g0120.1, |
| | Nitab0000005g0090.1, | Nitab0000002g0550.1, | Nitab0002332g0030.1, |
| | Nitab0001756g0010.1, | Nitab0000202g0460.1, | Nitab0003820g0040.1, |
| | Nitab0004551g0040.1, | Nitab0006241g0070.1, | Nitab0000712g0040.1, |
| | Nitab0000559g0130.1, | Nitab0001701g0100.1, | Nitab0000667g0180.1, |
| | Nitab0009466g0040.1, | Nitab0001794g0100.1, | Nitab0005451g0010.1, |
| | Nitab0005267g0010.1, | Nitab0002055g0110.1, | Nitab0001584g0120.1, |
| | Nitab0004133g0010.1, | Nitab0006560g0010.1, | Nitab0001908g0030.1, |
| | Nitab0002875g0030.1, | Nitab0000642g0170.1, | Nitab0000003g0210.1, |
| | Nitab0000540g0020.1, | Nitab0021887g0010.1, | Nitab0000713g0070.1, |
| | Nitab0000574g0110.1, | Nitab0003321g0030.1, | Nitab0006693g0010.1, |
| | Nitab0000262g0020.1, | Nitab0008857g0030.1, | Nitab0001172g0110.1, |
| | Nitab0011903g0010.1, | Nitab0006640g0010.1, | Nitab0000322g0040.1, |
| | Nitab0010836g0030.1, | Nitab0001590g0030.1, | Nitab0007450g0010.1, |
| | Nitab0002896g0030.1, | Nitab0004456g0060.1, | Nitab0000943g0010.1, |
| | Nitab0009546g0010.1, | Nitab0004087g0040.1, | Nitab0000142g0120.1, |

| | | |
|----------------------|----------------------|----------------------|
| Nitab0000248g0120.1, | Nitab0004854g0060.1, | Nitab0002530g0070.1, |
| Nitab0011076g0020.1, | Nitab0000036g0090.1, | Nitab0002040g0020.1, |
| Nitab0002631g0020.1, | Nitab0000386g0160.1, | Nitab0003606g0040.1, |
| Nitab0001519g0120.1, | Nitab0000146g0050.1, | Nitab0001702g0050.1, |
| Nitab0014621g0010.1, | Nitab0010401g0020.1, | Nitab0000061g0100.1, |
| Nitab0002389g0010.1, | Nitab0006980g0060.1, | Nitab0000324g0240.1, |
| Nitab0004903g0060.1, | Nitab0006794g0060.1, | Nitab0002963g0080.1, |
| Nitab0000463g0190.1, | Nitab0006916g0030.1, | Nitab0006629g0020.1, |
| Nitab0000101g0340.1, | Nitab0000476g0270.1, | Nitab0000740g0040.1, |
| Nitab0001097g0090.1, | Nitab0003610g0020.1, | Nitab0012878g0020.1, |
| Nitab0005180g0030.1, | Nitab0000021g1050.1, | Nitab0000058g0230.1, |
| Nitab0000969g0020.1, | Nitab0009641g0020.1, | Nitab0001534g0020.1, |
| Nitab0002948g0070.1, | Nitab0000102g0300.1, | Nitab0004892g0040.1, |
| Nitab0005003g0020.1, | Nitab0002293g0030.1, | Nitab0008054g0010.1, |
| Nitab0006133g0010.1, | Nitab0002055g0150.1, | Nitab0008332g0020.1, |
| Nitab0000123g0580.1, | Nitab0002606g0020.1, | Nitab0000850g0070.1, |
| Nitab0004479g0040.1, | Nitab0006049g0020.1, | Nitab0000178g0130.1, |
| Nitab0001176g0100.1, | Nitab0000676g0220.1, | Nitab0003295g0220.1, |
| Nitab0012253g0010.1, | Nitab0002072g0040.1, | Nitab0000088g0060.1, |
| Nitab0001975g0010.1, | Nitab0000543g0010.1, | Nitab0004025g0060.1, |
| Nitab0000002g0180.1, | Nitab0001960g0060.1, | Nitab0000838g0010.1, |
| Nitab0011592g0010.1, | Nitab0002620g0010.1, | Nitab0000621g0130.1, |
| Nitab0010689g0010.1, | Nitab0006963g0020.1, | Nitab0001318g0010.1, |
| Nitab0001599g0170.1, | Nitab0010683g0010.1, | Nitab0000629g0030.1, |
| Nitab0001416g0010.1, | Nitab0000208g0170.1, | Nitab0004327g0030.1, |
| Nitab0000616g0080.1, | Nitab0004802g0050.1, | Nitab0002024g0040.1, |
| Nitab0004143g0010.1, | Nitab0000016g0360.1, | Nitab0004658g0020.1, |
| Nitab0003100g0090.1, | Nitab0001091g0060.1, | Nitab0002462g0050.1, |
| Nitab0001607g0150.1, | Nitab0002076g0010.1, | Nitab0001933g0010.1, |
| Nitab0003861g0040.1, | Nitab0013588g0020.1, | Nitab0002632g0070.1, |
| Nitab0003484g0070.1, | Nitab0003726g0010.1, | Nitab0000672g0080.1, |
| Nitab0000916g0020.1, | Nitab0005194g0010.1, | Nitab0000017g0200.1, |
| Nitab0000444g0200.1, | Nitab0002803g0020.1, | Nitab0004241g0060.1, |
| Nitab0000109g0160.1, | Nitab0005913g0020.1, | Nitab0002241g0010.1, |
| Nitab0001777g0040.1, | Nitab0011083g0010.1, | Nitab0008908g0020.1, |
| Nitab0000440g0010.1, | Nitab0000131g0210.1, | Nitab0000354g0150.1, |
| Nitab0006324g0050.1, | Nitab0000041g0320.1, | Nitab0003147g0060.1, |
| Nitab0004511g0010.1, | Nitab0000784g0110.1, | Nitab0007848g0010.1, |
| Nitab0000388g0040.1, | Nitab0003889g0040.1, | Nitab0004991g0030.1, |
| Nitab0004835g0040.1, | Nitab0007123g0020.1, | Nitab0001663g0280.1, |
| Nitab0000336g0010.1, | Nitab0000605g0080.1, | Nitab0004757g0010.1, |
| Nitab0028143g0010.1, | Nitab0004531g0020.1, | Nitab0000147g0130.1, |
| Nitab0004560g0010.1, | Nitab0002478g0030.1, | Nitab0000146g0010.1, |
| Nitab0000062g0150.1, | Nitab0005233g0020.1, | Nitab0001432g0050.1, |
| Nitab0000011g0070.1, | Nitab0000570g0280.1, | Nitab0001759g0030.1, |

| | | | |
|--------|--|----------------------|----------------------|
| 2R-MYB | Nitab0003711g0030.1, | Nitab0001091g0100.1, | Nitab0002224g0140.1, |
| | Nitab0005559g0030.1, | Nitab0001522g0090.1, | Nitab0002811g0050.1, |
| | Nitab0000145g0010.1, | Nitab0010430g0010.1, | Nitab0003836g0060.1, |
| | Nitab0012578g0010.1, | Nitab0004550g0020.1, | Nitab0008336g0010.1, |
| | Nitab0001164g0090.1, | Nitab0007572g0030.1, | Nitab0005894g0050.1, |
| | Nitab0001083g0040.1, | Nitab0011729g0010.1, | Nitab0000386g0010.1, |
| | Nitab0000308g0160.1, | Nitab0002881g0090.1, | Nitab0000222g0120.1, |
| | Nitab0000326g0260.1, | Nitab0001199g0120.1, | Nitab0001702g0030.1, |
| | Nitab0004186g0020.1, | Nitab0006815g0010.1, | Nitab0000109g0060.1, |
| | Nitab0006900g0010.1, | Nitab0001632g0010.1, | Nitab0010431g0010.1, |
| | Nitab0001409g0040.1, | Nitab0005366g0010.1, | Nitab0000308g0210.1, |
| | Nitab0010752g0020.1, | Nitab0011729g0030.1, | Nitab0000185g0200.1, |
| | Nitab0006594g0090.1, | Nitab0001088g0210.1, | Nitab0007468g0010.1, |
| | Nitab0002465g0020.1, | Nitab0009217g0030.1, | Nitab0006031g0030.1, |
| | Nitab0000045g0240.1, | Nitab0002223g0030.1, | Nitab0001564g0060.1, |
| | Nitab0000463g0100.1, | Nitab0003758g0060.1, | Nitab0003856g0030.1, |
| | Nitab0012999g0010.1, | Nitab0005160g0040.1, | Nitab0001094g0080.1, |
| | Nitab0001326g0080.1, | Nitab0000042g0050.1, | Nitab0003114g0010.1, |
| | Nitab0009749g0020.1, | Nitab0003779g0070.1, | Nitab0001820g0010.1, |
| | Nitab0004694g0040.1, | Nitab0002872g0040.1, | Nitab0001002g0020.1, |
| | Nitab0008982g0040.1, | Nitab0002117g0090.1, | Nitab0000272g0060.1, |
| | Nitab0008900g0010.1, Nitab0001097g0040.1 | | |
| | Nitab0003478g0050.1, | Nitab0000578g0120.1, | Nitab0000889g0030.1, |
| | Nitab0000057g0160.1, | Nitab0003062g0070.1, | Nitab0001087g0070.1, |
| | Nitab0010133g0010.1, | Nitab0000081g0200.1, | Nitab0001863g0170.1, |
| | Nitab0002738g0010.1, | Nitab0004051g0020.1, | Nitab0000003g0660.1, |
| | Nitab0004704g0020.1, | Nitab0000769g0140.1, | Nitab0012173g0010.1, |
| | Nitab0002560g0010.1, | Nitab0000109g0340.1, | Nitab0002728g0020.1, |
| | Nitab0004482g0030.1, | Nitab0000232g0160.1, | Nitab0001334g0020.1, |
| | Nitab0000044g0310.1, | Nitab0000278g0070.1, | Nitab0000225g0010.1, |
| | Nitab0002030g0030.1, | Nitab0002529g0070.1, | Nitab0003242g0050.1, |
| | Nitab0006658g0010.1, | Nitab0000568g0090.1, | Nitab0000747g0030.1, |
| | Nitab0002163g0070.1, | Nitab0006880g0040.1, | Nitab0000141g0070.1, |
| | Nitab0002906g0080.1, | Nitab0002293g0010.1, | Nitab0004551g0030.1, |
| | Nitab0000906g0090.1, | Nitab0000121g0260.1, | Nitab0006037g0010.1, |
| | Nitab0001050g0010.1, | Nitab0001442g0010.1, | Nitab0001814g0020.1, |
| | Nitab0004662g0010.1, | Nitab0002560g0020.1, | Nitab0007938g0010.1, |
| | Nitab0002152g0050.1, | Nitab0000302g0200.1, | Nitab0008050g0020.1, |
| | Nitab0000210g0060.1, | Nitab0002217g0020.1, | Nitab0003867g0010.1, |
| | Nitab0000244g0260.1, | Nitab0004379g0020.1, | Nitab0004530g0020.1, |
| | Nitab0018794g0010.1, | Nitab0005512g0020.1, | Nitab0003163g0090.1, |
| | Nitab0006144g0030.1, | Nitab0002714g0010.1, | Nitab0000387g0040.1, |
| | Nitab0000040g0170.1, | Nitab0000842g0120.1, | Nitab0002222g0050.1, |
| | Nitab0000080g0070.1, | Nitab0000436g0250.1, | Nitab0000103g0280.1, |
| | Nitab0008488g0010.1, | Nitab0003781g0060.1, | Nitab0006318g0060.1, |

| | | | | |
|--------|--|--|--|---|
| | Nitab0001213g0100.1, Nitab0001622g0080.1, Nitab0002578g0010.1, Nitab0000564g0080.1, Nitab0000201g0150.1, Nitab0003212g0030.1, Nitab0001081g0060.1, Nitab0005060g0020.1, Nitab0000683g0060.1, Nitab0005004g0050.1, Nitab0010251g0010.1, Nitab0004623g0050.1, Nitab0001318g0060.1, Nitab0000797g0020.1, Nitab0000021g0690.1, Nitab0001373g0030.1, Nitab0003845g0050.1, Nitab0012287g0020.1, Nitab0000363g0320.1, Nitab0005842g0010.1, Nitab0000610g0290.1, Nitab0000958g0020.1, Nitab0003179g0030.1, Nitab0002160g0080.1, Nitab0002403g0060.1, Nitab0009259g0010.1, Nitab0007139g0020.1, Nitab0007042g0010.1, Nitab0004193g0070.1, Nitab0006516g0020.1, Nitab0000068g0400.1, Nitab0005769g0040.1, Nitab0001180g0160.1, Nitab0001048g0070.1, Nitab0001612g0030.1, Nitab0005019g0040.1, Nitab0000070g0110.1, Nitab0002300g0110.1, Nitab0011760g0030.1, | Nitab0005586g0010.1, Nitab0000994g0010.1, Nitab0000325g0020.1, Nitab0002250g0030.1, Nitab0005973g0020.1, Nitab0000634g0210.1, Nitab0000063g0230.1, Nitab0007287g0010.1, Nitab0001007g0040.1, Nitab0000247g0080.1, Nitab0002714g0060.1, Nitab0000365g0050.1, Nitab0004170g0030.1, Nitab0000895g0130.1, Nitab0017504g0010.1, Nitab0016704g0010.1, Nitab0001730g0050.1, Nitab0008924g0010.1, Nitab0001984g0040.1, Nitab0000008g0380.1, Nitab0000514g0130.1, Nitab0000649g0090.1, Nitab0000541g0100.1, Nitab0009971g0010.1, Nitab0001041g0130.1, Nitab0001966g0010.1, Nitab0000205g0020.1, Nitab0001097g0050.1, Nitab0001163g0150.1, Nitab0004118g0080.1, Nitab0001074g0040.1, Nitab0005708g0020.1, Nitab0001176g0010.1, Nitab0000274g0200.1, Nitab0000116g0020.1, Nitab0008604g0010.1, Nitab0002137g0010.1, Nitab0008289g0010.1, Nitab0006893g0010.1, Nitab0001818g0030.1, Nitab0003061g0020.1, | Nitab0000465g0070.1, Nitab0001616g0010.1, Nitab0001019g0020.1, Nitab0003324g0040.1, Nitab0006450g0010.1, Nitab0006265g0060.1, Nitab0007679g0010.1, Nitab0004437g0020.1, Nitab0003500g0020.1, Nitab0002721g0050.1, Nitab0008039g0010.1, Nitab0000103g0300.1, Nitab0000769g0210.1, Nitab0000569g0180.1, Nitab0000189g0200.1, Nitab0002352g0080.1, Nitab0003683g0020.1, Nitab0005304g0030.1, Nitab0000083g0200.1, Nitab0000041g0400.1, Nitab0000428g0150.1, Nitab0006804g0010.1, Nitab0000103g0310.1, Nitab0005224g0050.1, Nitab0000010g0220.1, Nitab0000918g0020.1, Nitab0004993g0020.1, Nitab0000716g0090.1, Nitab0000673g0080.1, Nitab0007777g0020.1, Nitab0003631g0010.1, Nitab0000614g0110.1, Nitab0000174g0270.1, Nitab0004195g0050.1, Nitab0005819g0010.1, Nitab0001031g0090.1, Nitab0003511g0010.1, Nitab0000958g0010.1, Nitab0004786g0040.1, Nitab0001186g0080.1, | Nitab0000777g0020.1, Nitab0011004g0010.1, Nitab0000174g0270.1, Nitab0004195g0050.1, Nitab0005819g0010.1, Nitab0001031g0090.1, Nitab0003511g0010.1, Nitab000063g0150.1, Nitab0000271g0230.1, Nitab0002626g0050.1, Nitab0007325g0020.1, Nitab0006677g0010.1, Nitab0001567g0080.1, Nitab0005648g0010.1, |
| 3R-MYB | Nitab0000103g0290.1, Nitab0000052g0200.1, Nitab0003845g0010.1, | Nitab0007126g0010.1, Nitab0000349g0300.1, Nitab0010472g0020.1, Nitab0001911g0080.1, | Nitab0006677g0010.1, Nitab0001567g0080.1, Nitab0005648g0010.1, | |
| 4R-MYB | Nitab0012734g0010.1, Nitab0001158g0050.1 | | | |

Supplementary Table 9 Distribution of members of the Soybean (*Glycine max*) MYB family

| Subfamily | Gene ID | | | |
|-----------|---------------------|---------------------|---------------------|---------------------|
| 1R-MYB | Glyma.14G191700.1, | Glyma.18G134200.11, | Glyma.08G290100.11, | Glyma.02G224900.1, |
| | Glyma.20G011700.2, | Glyma.11G176500.1, | Glyma.18G065200.1, | Glyma.17G121000.1, |
| | Glyma.18G197500.1, | Glyma.07G146300.1, | Glyma.05G013000.1, | Glyma.03G078000.1, |
| | Glyma.01G112700.2, | Glyma.11G227200.2, | Glyma.18G030300.2, | Glyma.10G277800.1, |
| | Glyma.20G111800.1, | Glyma.20G178500.2, | Glyma.07G175500.2, | Glyma.02G254200.2, |
| | Glyma.15G034500.2, | Glyma.14G062200.2, | Glyma.10G212600.3, | Glyma.13G071701.1, |
| | Glyma.19G085700.1, | Glyma.19G083700.1, | Glyma.04G184200.1, | Glyma.03G258700.2, |
| | Glyma.11G211643.1, | Glyma.18G044200.1, | Glyma.14G210600.1, | Glyma.16G017400.7, |
| | Glyma.02G241000.1, | Glyma.09G167900.1, | Glyma.08G188900.1, | Glyma.04G014400.2, |
| | Glyma.12G168800.1, | Glyma.07G048500.1, | Glyma.06G188400.1, | Glyma.12G044200.8, |
| | Glyma.19G260900.8, | Glyma.03G261800.4, | Glyma.20G062300.2, | Glyma.11G118900.4, |
| | Glyma.13G031300.3, | Glyma.14G153000.2, | Glyma.17G229800.1, | Glyma.13G006200.17, |
| | Glyma.13G038100.1, | Glyma.16G217700.1, | Glyma.10G048500.3, | Glyma.13G136300.5, |
| | Glyma.05G032200.1, | Glyma.17G094400.1, | Glyma.15G117100.2, | Glyma.09G012500.1, |
| | Glyma.04G247200.3, | Glyma.06G115600.3, | Glyma.10G118400.2, | Glyma.20G060250.1, |
| | Glyma.14G093800.1, | Glyma.19G178000.2, | Glyma.04G177300.1, | Glyma.06G187600.1, |
| | Glyma.14G120600.3, | Glyma.16G032600.1, | Glyma.07G066100.1, | Glyma.06G051900.1, |
| | Glyma.08G029400.1, | Glyma.05G222600.1, | Glyma.04G051000.2, | Glyma.01G003000.1, |
| | Glyma.18G237700.3, | Glyma.01G038600.1, | Glyma.02G026300.1, | Glyma.04G004700.1, |
| | Glyma.15G019400.1, | Glyma.13G354800.1, | Glyma.06G014400.1, | Glyma.05G062300.1, |
| | Glyma.07G007200.2, | Glyma.08G189900.1, | Glyma.10G230700.5, | Glyma.13G005900.1, |
| | Glyma.13G006100.1, | Glyma.11G142900.3, | Glyma.17G144100.1, | Glyma.08G293300.1, |
| | Glyma.06G120200.3, | Glyma.18G129900.1, | Glyma.12G172250.1, | Glyma.20G162800.3, |
| | Glyma.20G060050.1, | Glyma.13G038200.1, | Glyma.16G178700.1, | Glyma.09G131400.5, |
| | Glyma.04G243100.1, | Glyma.05G189200.1, | Glyma.15G135100.3, | Glyma.09G196500.1, |
| | Glyma.13G083601.1, | Glyma.12G195200.1, | Glyma.07G074500.1, | Glyma.09G029300.2, |
| | Glyma.19G247600.3, | Glyma.13G005833.1, | Glyma.01G228200.1, | Glyma.11G010900.7, |
| | Glyma.16G152200.1, | Glyma.02G070900.2, | Glyma.13G307300.2, | Glyma.03G166400.1, |
| | Glyma.19G167500.1, | Glyma.13G126200.9, | Glyma.10G039700.13, | Glyma.10G153800.30, |
| | Glyma.14G202600.1, | Glyma.17G152800.3, | Glyma.20G234500.16, | Glyma.12G060200.1, |
| | Glyma.05G239500.2, | Glyma.11G136600.3, | Glyma.02G178100.2, | Glyma.18G075100.1, |
| | Glyma.09G017400.12, | Glyma.02G162600.1, | Glyma.15G123100.2, | Glyma.12G042900.1, |
| | Glyma.01G200800.8, | Glyma.11G183400.1, | Glyma.08G149600.1, | Glyma.03G250000.4, |
| | Glyma.05G070200.2, | Glyma.19G127000.1, | Glyma.06G143600.2, | Glyma.12G100600.1, |
| | Glyma.03G123400.2, | Glyma.06G303100.3, | Glyma.11G041300.1, | Glyma.06G097100.2, |
| | Glyma.09G211400.1, | Glyma.04G148800.2, | Glyma.02G214600.1, | Glyma.13G316600.2, |
| | Glyma.04G095300.5, | Glyma.12G184700.1, | Glyma.15G269600.2, | Glyma.19G146600.1, |
| | Glyma.11G117200.1, | Glyma.07G074300.1, | Glyma.01G194600.1, | Glyma.11G186600.1, |
| | Glyma.11G047300.1, | Glyma.03G143600.2, | Glyma.12G089100.1, | Glyma.12G117700.1, |
| | Glyma.17G160500.2, | Glyma.06G289300.1, | Glyma.06G216400.2, | Glyma.13G294300.1, |
| | Glyma.12G206600.1, | Glyma.13G303100.1, | Glyma.07G037100.5, | Glyma.07G153900.2, |
| | Glyma.18G052700.2, | Glyma.05G106000.2, | Glyma.02G177800.4, | Glyma.15G109100.1, |

| | | | | |
|--------|--------------------|---------------------|---------------------|--------------------|
| | Glyma.10G057800.6, | Glyma.18G204900.2, | Glyma.13G228900.6, | Glyma.13G144600.2, |
| | Glyma.15G145200.3, | Glyma.07G243300.1, | Glyma.09G004500.1, | Glyma.17G030600.1, |
| | Glyma.01G009600.1, | Glyma.04G031300.3, | Glyma.09G113000.2, | Glyma.09G040000.3, |
| | Glyma.15G083600.1, | Glyma.07G209500.3, | Glyma.02G135400.1, | Glyma.12G213900.1, |
| | Glyma.05G158900.1, | Glyma.08G116700.1, | Glyma.18G010800.1, | Glyma.18G113400.1, |
| | Glyma.02G157300.1, | Glyma.06G031400.1, | Glyma.11G246400.5, | Glyma.15G206200.1, |
| | Glyma.16G128300.2, | Glyma.20G185167.1, | Glyma.05G144500.1, | Glyma.07G171200.2, |
| | Glyma.09G098600.1, | Glyma.02G048100.1, | Glyma.15G215000.1, | Glyma.16G006500.4, |
| | Glyma.04G221800.1, | Glyma.02G085900.2, | Glyma.08G100900.1, | Glyma.14G031500.1, |
| | Glyma.07G229800.1, | Glyma.17G024600.3, | Glyma.13G290100.1, | Glyma.12G211600.1, |
| | Glyma.19G047702.2, | Glyma.02G282900.1, | Glyma.13G197800.2, | Glyma.19G002100.1, |
| | Glyma.14G110600.2, | Glyma.20G035300.1, | Glyma.01G123600.1, | Glyma.09G113100.1, |
| | Glyma.03G051400.1, | Glyma.03G237000.1, | Glyma.15G236400.1, | Glyma.07G178500.1, |
| | Glyma.11G058600.1, | Glyma.17G217100.1, | Glyma.01G224900.2, | Glyma.06G063500.1, |
| | Glyma.20G193600.4, | Glyma.01G183700.1, | Glyma.10G196600.2, | Glyma.04G012600.2, |
| | Glyma.15G263700.9, | Glyma.03G003500.3, | Glyma.08G163500.2, | Glyma.18G201800.1, |
| | Glyma.11G018200.1, | Glyma.19G122700.3, | Glyma.01G049100.2, | Glyma.16G093800.3, |
| | Glyma.20G186500.1, | Glyma.17G178500.3, | Glyma.13G155400.1, | Glyma.05G239800.2, |
| | Glyma.13G184500.1, | Glyma.04G035700.4, | Glyma.07G158600.1, | Glyma.09G017300.1, |
| | Glyma.04G062500.1, | Glyma.15G123000.1, | Glyma.03G125000.1, | Glyma.04G132200.1, |
| | Glyma.04G151000.2, | Glyma.17G119600.1, | Glyma.04G031700.1, | Glyma.06G031800.1, |
| | Glyma.07G106800.1, | Glyma.05G011500.1, | Glyma.10G204200.1, | Glyma.16G198800.1, |
| | Glyma.06G035700.1, | Glyma.20G009800.6, | Glyma.06G213400.1, | Glyma.17G076000.3, |
| | Glyma.09G171100.1, | Glyma.06G309200.1, | Glyma.09G112200.10, | Glyma.17G246200.1, |
| | Glyma.14G079000.2, | Glyma.10G281000.4, | Glyma.20G108600.1, | Glyma.02G108500.2, |
| | Glyma.03G221500.3, | Glyma.20G006000.1, | Glyma.01G086700.2, | Glyma.02G098800.1, |
| | Glyma.18G234900.2, | Glyma.11G138700.16, | Glyma.19G218500.2, | Glyma.08G046800.1, |
| | Glyma.18G073300.1, | Glyma.19G127950.1, | Glyma.03G081300.1, | Glyma.10G269601.2, |
| | Glyma.01G014800.1, | Glyma.14G067100.1, | Glyma.07G133000.5, | Glyma.07G192000.1, |
| | Glyma.09G257700.3, | Glyma.09G207300.1, | Glyma.18G182400.1, | Glyma.19G051651.1, |
| | Glyma.15G037300.2, | Glyma.02G242100.1, | Glyma.02G249400.4, | Glyma.14G211900.3, |
| | Glyma.12G062300.1, | Glyma.02G055900.1, | Glyma.18G043000.12, | Glyma.19G220800.1, |
| | Glyma.20G026500.1, | Glyma.11G213700.2, | Glyma.08G352600.3, | Glyma.13G337100.1, |
| | Glyma.14G074500.2, | Glyma.02G055800.1, | Glyma.07G249800.2, | Glyma.16G138400.1, |
| | Glyma.03G223600.1, | Glyma.01G173900.1 | | |
| 2R-MYB | Glyma.07G235900.1, | Glyma.16G072700.2, | Glyma.13G303200.1, | Glyma.20G117000.1, |
| | Glyma.01G004900.2, | Glyma.02G110200.1, | Glyma.17G162100.1, | Glyma.14G119000.1, |
| | Glyma.13G038500.1, | Glyma.07G141100.1, | Glyma.03G221700.1, | Glyma.19G006500.1, |
| | Glyma.02G225700.1, | Glyma.19G164600.1, | Glyma.03G007500.1, | Glyma.05G109200.1, |
| | Glyma.02G110000.1, | Glyma.07G038000.1, | Glyma.10G273000.1, | Glyma.17G231900.1, |
| | Glyma.10G010400.1, | Glyma.18G071600.1, | Glyma.14G069100.3, | Glyma.19G025000.1, |
| | Glyma.05G211200.1, | Glyma.12G241400.2, | Glyma.02G019300.2, | Glyma.14G086500.1, |
| | Glyma.03G013300.1, | Glyma.02G005600.1, | Glyma.03G073756.1, | Glyma.09G001500.1, |
| | Glyma.05G005400.1, | Glyma.20G184200.1, | Glyma.10G014600.1, | Glyma.04G042300.1, |
| | Glyma.02G110100.1, | Glyma.01G190100.1, | Glyma.08G168100.1, | Glyma.04G205100.1, |

| | | | |
|--------------------|--------------------|--------------------|--------------------|
| Glyma.03G073764.1, | Glyma.01G044300.7, | Glyma.10G132200.3, | Glyma.18G273300.1, |
| Glyma.17G088600.1, | Glyma.01G211500.1, | Glyma.06G103300.1, | Glyma.04G101900.1, |
| Glyma.05G051700.1, | Glyma.15G144000.1, | Glyma.19G038100.1, | Glyma.20G013000.1, |
| Glyma.10G139000.1, | Glyma.02G108800.1, | Glyma.15G264000.1, | Glyma.14G090900.1, |
| Glyma.11G194100.1, | Glyma.18G261700.2, | Glyma.11G215800.1, | Glyma.05G027000.1, |
| Glyma.15G025500.1, | Glyma.10G059000.3, | Glyma.15G176000.2, | Glyma.06G312900.2, |
| Glyma.20G184100.1, | Glyma.05G234600.1, | Glyma.05G040700.1, | Glyma.07G228600.1, |
| Glyma.05G061900.1, | Glyma.04G242200.1, | Glyma.11G107100.1, | Glyma.12G199100.1, |
| Glyma.19G062000.1, | Glyma.18G151400.2, | Glyma.06G003800.1, | Glyma.19G224600.1, |
| Glyma.15G041100.1, | Glyma.11G034900.1, | Glyma.15G225300.5, | Glyma.02G124300.1, |
| Glyma.03G081900.1, | Glyma.06G300100.1, | Glyma.06G299900.1, | Glyma.20G082300.1, |
| Glyma.01G016600.1, | Glyma.07G054000.1, | Glyma.19G061600.1, | Glyma.08G005400.1, |
| Glyma.17G158000.1, | Glyma.13G032200.1, | Glyma.06G036800.1, | Glyma.10G236400.2, |
| Glyma.07G008500.1, | Glyma.06G050000.1, | Glyma.12G104600.1, | Glyma.20G223300.3, |
| Glyma.17G037500.1, | Glyma.20G199300.1, | Glyma.07G189300.1, | Glyma.19G248100.1, |
| Glyma.12G057900.1, | Glyma.03G073774.1, | Glyma.10G006600.1, | Glyma.18G191200.1, |
| Glyma.13G066600.1, | Glyma.06G178600.1, | Glyma.04G036700.1, | Glyma.19G061300.1, |
| Glyma.08G191500.1, | Glyma.17G031600.1, | Glyma.05G224300.1, | Glyma.01G107500.1, |
| Glyma.18G095600.4, | Glyma.01G207600.1, | Glyma.12G199600.1, | Glyma.10G054700.1, |
| Glyma.10G037001.1, | Glyma.06G299300.1, | Glyma.12G199200.1, | Glyma.08G336500.1, |
| Glyma.20G047600.1, | Glyma.17G085651.1, | Glyma.04G004100.1, | Glyma.17G232220.1, |
| Glyma.08G059900.1, | Glyma.06G193600.1, | Glyma.06G300200.1, | Glyma.20G034100.1, |
| Glyma.13G339900.1, | Glyma.02G253100.1, | Glyma.09G032100.1, | Glyma.20G209700.1, |
| Glyma.18G181300.1, | Glyma.14G058100.2, | Glyma.19G119300.1, | Glyma.01G222200.1, |
| Glyma.10G165800.1, | Glyma.11G009400.1, | Glyma.09G238800.1, | Glyma.12G177700.1, |
| Glyma.06G300000.1, | Glyma.10G191000.1, | Glyma.03G225200.1, | Glyma.09G139000.1, |
| Glyma.14G214500.1, | Glyma.09G206200.1, | Glyma.18G230600.1, | Glyma.19G218800.1, |
| Glyma.07G110700.1, | Glyma.16G092100.2, | Glyma.06G300300.1, | Glyma.14G154400.1, |
| Glyma.05G098200.1, | Glyma.02G013900.1, | Glyma.02G264900.5, | Glyma.10G010300.1, |
| Glyma.07G216000.1, | Glyma.19G257400.1, | Glyma.19G022100.1, | Glyma.20G090700.1, |
| Glyma.09G235300.1, | Glyma.12G079800.1, | Glyma.01G196200.1, | Glyma.19G184500.1, |
| Glyma.13G247200.1, | Glyma.06G195600.1, | Glyma.14G039200.3, | Glyma.10G206500.1, |
| Glyma.18G261400.3, | Glyma.13G128500.1, | Glyma.09G038900.1, | Glyma.08G017600.1, |
| Glyma.09G235600.1, | Glyma.07G037700.1, | Glyma.07G242600.1, | Glyma.16G073000.1, |
| Glyma.16G007100.1, | Glyma.07G073000.2, | Glyma.14G091500.1, | Glyma.03G250600.1, |
| Glyma.09G234900.1, | Glyma.13G145800.1, | Glyma.13G282100.1, | Glyma.12G237500.1, |
| Glyma.19G214900.1, | Glyma.05G038500.1, | Glyma.09G261600.1, | Glyma.17G245200.1, |
| Glyma.20G157900.2, | Glyma.08G317626.1, | Glyma.08G298200.1, | Glyma.18G259100.1, |
| Glyma.06G160500.1, | Glyma.06G181800.2, | Glyma.17G099800.1, | Glyma.13G109100.1, |
| Glyma.10G206400.1, | Glyma.10G165900.8, | Glyma.13G073400.2, | Glyma.03G227700.2, |
| Glyma.03G006600.1, | Glyma.04G176700.1, | Glyma.08G163200.1, | Glyma.08G042100.1, |
| Glyma.16G007200.1, | Glyma.09G235100.1, | Glyma.18G273400.1, | Glyma.19G264200.1, |
| Glyma.11G133700.1, | Glyma.17G167100.2, | Glyma.02G006800.1, | Glyma.11G108400.1, |
| Glyma.13G203100.1, | Glyma.13G063200.1, | Glyma.17G133800.6, | Glyma.05G006100.1, |
| Glyma.17G237900.1, | Glyma.18G066400.1, | Glyma.13G309200.1, | Glyma.03G115400.1, |

| | |
|--------|--|
| | Glyma.15G259400.3, Glyma.11G021600.1, Glyma.02G244600.1, Glyma.02G247100.1, Glyma.07G132400.2, Glyma.01G049600.1, Glyma.13G141900.1, Glyma.01G051700.1, Glyma.09G169300.1, Glyma.04G187300.1, Glyma.13G187500.6, Glyma.13G050400.1, Glyma.04G125700.1, Glyma.11G045400.1, Glyma.12G218200.1, Glyma.04G170100.1, Glyma.10G180800.1, Glyma.15G066800.1, Glyma.19G055800.1, Glyma.16G189400.1, Glyma.19G017900.1, Glyma.18G040700.1, Glyma.04G166900.1, Glyma.03G183900.1, Glyma.06G121200.1, Glyma.13G302400.1, Glyma.12G193300.1, Glyma.10G236600.2, Glyma.11G030200.1, Glyma.10G142200.1, Glyma.08G317800.1, Glyma.19G222200.1, Glyma.09G183400.1, Glyma.13G061900.1, Glyma.19G219000.1, Glyma.13G322900.1, Glyma.03G218200.1, Glyma.19G118500.1, Glyma.17G143600.1, Glyma.16G063700.1, Glyma.20G158100.1, Glyma.11G052100.1, Glyma.14G063400.1, Glyma.13G094400.1, Glyma.20G032900.1, Glyma.12G106400.1, Glyma.04G048900.1, Glyma.06G300400.1, Glyma.01G067800.1, Glyma.16G218900.1, Glyma.13G333200.1, Glyma.08G317266.1, Glyma.17G050500.1, Glyma.02G009800.1, Glyma.03G163100.1, Glyma.07G126900.1, Glyma.12G105400.1, Glyma.07G092800.1, Glyma.19G024700.1, Glyma.01G233400.1, Glyma.18G262000.1, Glyma.08G250600.1, Glyma.12G017000.1, Glyma.03G221900.1, Glyma.12G104500.1, Glyma.07G228700.1, Glyma.14G192600.1, Glyma.12G066000.1, Glyma.12G032200.1, Glyma.16G023000.1, Glyma.12G104800.1, Glyma.18G123600.1, Glyma.17G065800.1, Glyma.05G072600.1 |
| 3R-MYB | Glyma.17G190900.1, Glyma.07G132200.1, Glyma.18G181100.2, Glyma.04G080600.3, Glyma.14G143400.2, Glyma.01G217500.1, Glyma.06G082300.1, Glyma.03G082400.1 |
| 4R-MYB | Glyma.09G178000.2, Glyma.07G100700.3 |

Supplementary Table 10 Distribution of members of the Cultivated peanut (*Arachis hypogaea*) MYB family

| Subfamily | Gene ID | | | | |
|-----------|---------------|---------------|---------------|---------------|---------------|
| 1R-MYB | AH01G04200.1, | AH11G04520.1, | AH18G06840.1, | AH07G15070.1, | AH17G14390.1, |
| | AH09G29640.1, | AH02G21580.1, | AH12G23940.1, | AH19G38410.1, | AH10G31080.1, |
| | AH13G56140.1, | AH13G26170.1, | AH01G32250.1, | AH13G43800.1, | AH03G40940.1, |
| | AH08G12350.1, | AH18G14200.1, | AH06G05560.1, | AH19G15610.1, | AH18G32560.3, |
| | AH07G09030.2, | AH06G26000.1, | AH12G12960.1, | AH17G07910.1, | AH12G21650.1, |
| | AH19G33070.2, | AH09G34160.1, | AH09G11960.1, | AH06G08680.1, | AH19G27900.1, |
| | AH12G13010.1, | AH03G39340.1, | AH13G42290.1, | AH15G23790.1, | AH05G30200.1, |
| | AH01G13240.1, | AH17G22200.1, | AH08G02590.1, | AH07G11130.1, | AH10G17290.1, |
| | AH02G04520.1, | AH12G04990.1, | AH06G10110.1, | AH16G14490.1, | AH15G37890.2, |
| | AH03G04940.1, | AH13G07100.1, | AH09G00040.2, | AH05G24220.1, | AH14G03260.1, |
| | AH04G02450.1, | AH17G33850.1, | AH18G30940.1, | AH17G33050.1, | AH13G31180.1, |
| | AH11G20490.1, | AH01G19010.1, | AH03G27130.1, | AH15G11910.1, | AH05G10790.1, |
| | AH16G12280.1, | AH08G08030.1, | AH08G09390.1, | AH12G14700.1, | AH02G19630.1, |
| | AH14G06930.1, | AH04G05380.1, | AH03G02310.1, | AH03G13270.1, | AH06G14700.1, |
| | AH05G24880.1, | AH12G02070.1, | AH02G01890.1, | AH15G30510.1, | AH16G06840.1, |
| | AH16G17860.1, | AH05G03000.1, | AH13G04170.1, | AH18G01910.1, | AH07G18400.1, |
| | AH19G07970.1, | AH19G07860.1, | AH09G06330.1, | AH09G06240.1, | AH11G15070.1, |
| | AH01G14680.1, | AH05G35540.1, | AH15G36690.1, | AH19G43260.1, | AH09G24610.1, |
| | AH08G29700.2, | AH18G34420.1, | AH19G05080.1, | AH09G03420.1, | AH15G31990.1, |
| | AH05G15340.1, | AH15G07570.1, | AH08G00520.1, | AH02G18900.1, | AH17G25250.1, |
| | AH13G01940.1, | AH03G03690.1, | AH05G19120.1, | AH12G15190.1, | AH15G16070.1, |
| | AH07G04610.1, | AH04G08820.1, | AH12G11180.1, | AH16G15800.1, | AH06G06990.1, |
| | AH17G33060.1, | AH14G09400.1, | AH13G04850.1, | AH08G08050.1, | AH16G12090.1, |
| | AH03G02930.1, | AH02G10380.2, | AH04G04120.1, | AH14G05100.1, | AH08G11830.1, |
| | AH18G03910.1, | AH04G06110.1, | AH14G07600.1, | AH09G16490.1, | AH19G20800.1, |
| | AH11G13510.2, | AH11G26900.1, | AH08G28250.1, | AH01G09610.1, | AH10G26830.1, |
| | AH20G34550.1, | AH08G15570.3, | AH18G05880.1, | AH13G45120.1, | AH03G42510.1, |
| | AH00G01130.1, | AH08G28200.1, | AH18G33160.1, | AH00G01090.1, | AH08G28170.1, |
| | AH03G05090.4, | AH13G07280.1, | AH01G30010.1, | AH13G17950.1, | AH11G12010.1, |
| | AH18G09750.1, | AH03G15490.1, | AH08G18380.1, | AH14G23270.1, | AH01G13420.1, |
| | AH18G32620.1, | AH01G12160.1, | AH05G04350.2, | AH15G00490.2, | AH08G27680.2, |
| | AH18G23800.2, | AH07G16860.1, | AH17G03460.1, | AH04G20450.1, | AH08G27660.1, |
| | AH18G33090.1, | AH04G14570.1, | AH18G33110.1, | AH14G11220.1, | AH04G07410.1, |
| | AH12G06070.1, | AH10G01600.2, | AH11G31070.1, | AH20G03800.2, | AH17G19260.1, |
| | AH07G18990.1, | AH18G10510.1, | AH18G33020.1, | AH16G10530.2, | AH06G06680.2, |
| | AH12G36610.3, | AH08G19070.1, | AH05G03600.1, | AH04G26350.3, | AH18G32180.1, |
| | AH14G30880.2, | AH16G03700.1, | AH06G01120.1, | AH03G48770.1, | AH05G23440.1, |
| | AH10G13480.1, | AH20G18750.1, | AH13G22210.3, | AH03G19660.4, | AH08G27750.1, |
| | AH09G30290.1, | AH19G30910.1, | AH20G01110.1, | AH12G25410.1, | AH18G33050.1, |
| | AH20G11380.1, | AH05G00260.1, | AH02G22970.1, | AH06G20050.1, | AH01G27430.1, |
| | AH11G30260.1, | AH13G54280.1, | AH12G36120.1, | AH04G26310.4, | AH13G52990.1, |
| | AH09G09300.2, | AH19G12300.3, | AH19G29530.1, | AH09G23500.1, | AH16G35440.1, |

| | | | | | |
|--------|---------------|---------------|---------------|---------------|---------------|
| 2R-MYB | AH11G02710.1, | AH19G11660.2, | AH09G08660.2, | AH10G19500.1, | AH09G06300.1, |
| | AH20G25740.2, | AH13G04670.1, | AH18G23480.1, | AH07G16620.1, | AH01G08320.2, |
| | AH16G24930.1, | AH15G01840.1, | AH05G05820.1, | AH01G05960.1, | AH11G00610.1, |
| | AH14G22640.3, | AH11G02700.1, | AH07G16090.1, | AH04G19770.2, | AH05G29550.1, |
| | AH14G07590.3, | AH04G06100.1, | AH06G27380.1, | AH15G24480.1, | AH01G05940.1, |
| | AH18G26420.1, | AH20G03060.1, | AH01G31910.1, | AH18G32240.2, | AH18G23010.1, |
| | AH08G03100.1, | AH09G11140.1, | AH19G14560.1, | AH14G38960.1, | AH19G37980.1, |
| | AH06G27390.1, | AH16G41080.1, | AH09G30080.1, | AH17G26260.1, | AH05G39300.1, |
| | AH14G30850.1, | AH16G03710.1, | AH05G16400.1, | AH15G06520.1, | AH20G34810.1, |
| | AH13G46000.1, | AH10G27060.1, | AH03G02770.3, | AH15G19650.1, | AH05G33010.1, |
| | AH16G08160.1, | AH07G09840.1, | AH17G08860.1, | AH02G15670.1, | AH16G45800.1, |
| | AH06G27800.1, | AH07G10800.1, | AH13G42130.1, | AH20G24870.1, | AH03G39170.1, |
| | AH08G30280.1, | AH16G33960.1, | AH06G27400.1, | AH04G17030.1, | AH16G33950.1, |
| | AH06G04750.1, | AH16G33940.1, | AH10G27920.1, | AH20G00390.1, | AH18G04110.4, |
| | AH08G12050.2, | AH03G43360.1, | AH14G18640.1, | AH01G14370.1, | AH04G15640.1, |
| | AH20G05260.1, | AH17G16500.1, | AH19G15050.1, | AH09G11540.1, | AH19G29470.1, |
| | AH05G07090.1, | AH15G03200.1 | | | |
| | AH15G05100.1, | AH13G16380.1, | AH15G01130.1, | AH16G19150.1, | AH11G19440.1, |
| | AH19G07920.1, | AH13G44740.1, | AH17G09830.1, | AH09G11180.1, | AH11G05120.1, |
| | AH02G20710.1, | AH11G07500.1, | AH15G27320.1, | AH11G32060.1, | AH20G32170.1, |
| | AH06G20790.1, | AH02G18470.1, | AH08G29090.1, | AH06G08660.1, | AH15G35920.1, |
| | AH13G45140.1, | AH01G26700.1, | AH17G26480.1, | AH18G13240.1, | AH16G07620.1, |
| | AH03G06170.1, | AH14G21580.1, | AH08G14480.1, | AH13G24560.1, | AH08G17200.1, |
| | AH03G27280.1, | AH14G01210.1, | AH10G03670.1, | AH09G20380.1, | AH19G15410.1, |
| | AH13G02630.1, | AH16G19690.1, | AH07G16700.1, | AH16G42280.1, | AH01G11170.1, |
| | AH16G25740.1, | AH19G25890.1, | AH11G34990.1, | AH14G36890.1, | AH11G14640.1, |
| | AH02G23510.1, | AH15G13480.1, | AH20G31090.1, | AH14G44850.1, | AH06G09680.1, |
| | AH15G00160.1, | AH16G38680.1, | AH18G03690.1, | AH06G22160.1, | AH03G03240.1, |
| | AH03G08940.1, | AH02G05500.1, | AH18G29430.1, | AH14G10080.1, | AH07G22090.1, |
| | AH16G09190.1, | AH16G31420.1, | AH18G26040.1, | AH06G15900.1, | AH03G42610.1, |
| | AH09G11190.1, | AH03G31760.1, | AH16G43390.1, | AH13G45230.1, | AH18G06850.1, |
| | AH05G04180.1, | AH05G39110.1, | AH16G08200.1, | AH15G21100.1, | AH07G08040.1, |
| | AH01G21070.1, | AH19G14610.1, | AH09G09220.1, | AH08G24830.1, | AH15G31260.1, |
| | AH05G15100.1, | AH01G34090.1, | AH06G25360.1, | AH08G30260.1, | AH17G20320.1, |
| | AH05G18400.1, | AH08G03280.1, | AH03G00690.1, | AH13G11530.1, | AH14G35170.1, |
| | AH06G04320.1, | AH04G25380.1, | AH06G05270.1, | AH06G04770.1, | AH05G05090.1, |
| | AH01G16320.1, | AH15G14870.1, | AH16G12150.1, | AH08G13230.1, | AH14G22130.1, |
| | AH13G26980.1, | AH11G10770.1, | AH09G11840.1, | AH04G00590.1, | AH18G02650.1, |
| | AH12G33200.1, | AH08G22490.1, | AH12G22990.1, | AH03G12290.1, | AH12G21700.1, |
| | AH03G13810.1, | AH03G13830.1, | AH02G08860.1, | AH19G12220.1, | AH14G21220.1, |
| | AH01G22900.1, | AH14G15470.1, | AH13G15230.1, | AH13G16420.1, | AH18G23590.1, |
| | AH18G06830.1, | AH04G16820.1, | AH03G23980.1, | AH05G08900.1, | AH13G33330.1, |
| | AH12G36420.1, | AH16G08830.1, | AH04G07550.1, | AH01G01730.1, | AH09G29070.1, |
| | AH17G34100.1, | AH18G07960.1, | AH10G24780.1, | AH18G30250.1, | AH08G12620.1, |
| | AH09G25090.1, | AH01G14740.1, | AH05G27350.1, | AH17G31950.1, | AH14G43460.1, |

| | |
|--------|---|
| | AH12G06430.1, AH07G09160.1, AH15G35930.1, AH09G12140.1, AH13G16590.1, AH09G06280.1, AH03G38410.1, AH03G29460.1, AH04G15390.1, AH08G17290.1, AH14G45180.1, AH12G03980.1, AH08G25340.1, AH18G33690.1, AH11G23220.1, AH13G05510.1, AH14G29600.1, AH08G20850.1, AH08G05300.1, AH03G13910.1, AH19G42890.1, AH11G15170.1, AH08G09590.1, AH14G01200.1, AH12G19610.2, AH10G24490.1, AH08G17210.1, AH14G34900.1, AH16G32370.1, AH19G15830.1, AH03G38820.1, AH16G38740.1, AH14G11100.1, AH12G25870.1, AH03G23400.1, AH08G07290.1, AH01G01740.1, AH13G16450.1, AH11G17100.1, AH05G02960.1, AH03G21480.1, AH18G27800.1, AH19G39080.1, AH09G25080.1, AH01G25950.1, AH05G39120.1, AH15G24110.1, AH19G07940.1, AH13G08520.1, AH06G05570.1, AH05G09340.1, AH17G06950.1, AH18G07880.1, AH06G05580.1, AH12G38510.1, AH13G41870.1, AH18G04880.1, AH07G19570.1, AH20G00350.1, AH05G29940.1, AH04G00610.1, AH01G04300.1, AH20G05700.1, AH16G43320.1, AH03G42530.1, AH08G16470.1, AH11G04010.1, AH19G14600.1, AH08G28530.1, AH17G08060.1, AH03G42100.1, AH10G23960.1, AH04G18490.1, AH09G22470.1, AH11G31170.1, AH19G28330.1, AH08G23690.1, AH16G13770.1, AH10G24750.1, AH11G36620.1, AH01G18320.1, AH18G07900.1, AH19G42880.1, AH03G13820.1, AH16G39650.1, AH19G12230.1, AH07G10450.1, AH15G07800.1, AH20G32040.1, AH05G32050.1, AH13G41500.1, AH18G22400.1, AH06G20560.1, AH05G34810.1, AH11G07490.1, AH05G24290.1, AH16G25500.1, AH13G16430.1 |
| 3R-MYB | AH16G34900.1, AH20G28570.1, AH04G16710.1, AH10G21760.1, AH02G18430.1, AH12G21660.1, AH06G28200.1, AH15G05650.1, AH05G17160.1 |
| 4R-MYB | AH15G26280.4, AH05G28230.1 |

Supplementary Table 11 Distribution of members of the *Medicago truncatula* MYB family

| Subfamily | Gene ID | | | |
|-----------|-------------------|-------------------|-------------------|-------------------|
| 1R-MYB | Medtr5g069710.1, | Medtr3g462790.1, | Medtr8g063870.1, | Medtr5g007300.1, |
| | Medtr4g111975.1, | Medtr7g067080.1, | Medtr1g111830.1, | Medtr8g063600.1, |
| | Medtr5g081860.1, | Medtr5g075760.1, | Medtr0023s0210.1, | Medtr1g095570.2, |
| | Medtr5g075790.1, | Medtr5g096610.1, | Medtr5g010470.1, | Medtr6g033350.1, |
| | Medtr5g076960.1, | Medtr4g128190.1, | Medtr5g088060.1, | Medtr5g488160.1, |
| | Medtr3g113680.1, | Medtr5g027550.1, | Medtr7g109430.1, | Medtr3g064500.1, |
| | Medtr8g077990.1, | Medtr3g082790.2, | Medtr5g088010.1, | Medtr4g069830.2, |
| | Medtr7g118330.1, | Medtr3g081360.1, | Medtr6g477860.1, | Medtr5g085170.1, |
| | Medtr5g027570.1, | Medtr1g083180.1, | Medtr6g053260.1, | Medtr6g092540.1, |
| | Medtr3g116120.1, | Medtr4g107230.1, | Medtr3g104370.1, | Medtr2g100930.1, |
| | Medtr3g114060.1, | Medtr3g088480.1, | Medtr2g026310.1, | Medtr8g101650.1, |
| | Medtr1g067000.1, | Medtr5g037080.1, | Medtr8g028655.1, | Medtr7g063290.1, |
| | Medtr3g081380.1, | Medtr2g088730.1, | Medtr2g026380.1, | Medtr4g100630.1, |
| | Medtr2g099610.1, | Medtr0123s0070.1, | Medtr1g048660.1, | Medtr3g081390.1, |
| | Medtr1g063940.2, | Medtr2g023100.1, | Medtr2g090305.1, | Medtr8g494240.1, |
| | Medtr4g046737.1, | Medtr6g032990.1, | Medtr4g078810.1, | Medtr3g100180.3, |
| | Medtr7g035300.1, | Medtr8g093080.1, | Medtr7g098250.1, | Medtr2g031870.1, |
| | Medtr3g117790.2, | Medtr1g080330.2, | Medtr7g115530.8, | Medtr0095s0040.1, |
| | Medtr8g018410.1, | Medtr1g041765.1, | Medtr4g064730.1, | Medtr3g099000.1, |
| | Medtr8g017480.1, | Medtr2g027860.1, | Medtr4g097130.1, | Medtr7g089010.1, |
| | Medtr2g086450.1, | Medtr5g014040.1, | Medtr4g121020.2, | Medtr5g041350.1, |
| | Medtr0036s0260.1, | Medtr8g073050.1, | Medtr2g090675.1, | Medtr8g072990.1, |
| | Medtr8g091830.2, | Medtr6g004250.1, | Medtr1g033600.1, | Medtr5g015340.2, |
| | Medtr8g079940.1, | Medtr4g021760.1, | Medtr5g027440.1, | Medtr1g083040.7, |
| | Medtr1g032570.2, | Medtr2g450070.2, | Medtr7g093030.2, | Medtr4g119390.1, |
| | Medtr2g060760.1, | Medtr7g069660.1, | Medtr4g098870.2, | Medtr2g034960.1, |
| | Medtr4g086835.2, | Medtr3g467090.1, | Medtr7g117705.1, | Medtr8g020330.2, |
| | Medtr1g093080.1, | Medtr1g013170.1, | Medtr3g116690.1, | Medtr8g105600.1, |
| | Medtr8g092810.1, | Medtr3g111920.1, | Medtr8g024690.1, | Medtr3g086100.2, |
| | Medtr1g090670.1, | Medtr3g106220.1, | Medtr6g043490.1, | Medtr4g131570.1, |
| | Medtr6g033345.1, | Medtr8g086410.1, | Medtr1g013180.1, | Medtr1g053835.1, |
| | Medtr3g111880.1, | Medtr6g444980.1, | Medtr1g053800.1, | Medtr3g450310.1, |
| | Medtr1g053830.1, | Medtr3g102590.1, | Medtr7g088070.2, | Medtr8g069965.1, |
| | Medtr3g082160.1, | Medtr7g451720.1, | Medtr2g027800.2, | Medtr1g112370.1, |
| | Medtr3g116720.1, | Medtr8g028905.1, | Medtr5g017980.2, | Medtr4g067250.1, |
| | Medtr2g023580.1, | Medtr1g086590.4, | Medtr7g089210.1, | Medtr2g084230.3, |
| | Medtr8g066310.1, | Medtr7g078120.2, | Medtr5g054300.1, | Medtr4g021855.1, |
| | Medtr5g009460.1, | Medtr7g056603.8, | Medtr4g021790.1, | Medtr3g013440.1, |
| | Medtr5g079140.1, | Medtr6g043480.1, | Medtr4g081710.1, | Medtr6g071625.1, |
| | Medtr4g113140.1, | Medtr1g033620.1, | Medtr7g026400.1, | Medtr0450s0040.1, |
| | Medtr4g131580.1, | Medtr1g022290.1, | Medtr1g021520.1, | Medtr0223s0040.1, |
| | Medtr5g029470.1, | Medtr2g016220.2, | Medtr3g102600.3, | Medtr7g109870.1, |

| | | | | |
|--------|--|-------------------|-------------------|-------------------|
| | Medtr2g099600.1, | Medtr3g070110.1, | Medtr7g068600.1, | Medtr4g015130.1, |
| | Medtr4g131600.1, | Medtr3g064840.1, | Medtr4g117990.1, | Medtr4g021845.1, |
| | Medtr3g023780.1, | Medtr7g061840.1, | Medtr6g045327.1, | Medtr2g097290.1, |
| | Medtr8g077380.1, | Medtr8g077390.1, | Medtr8g077360.1, | Medtr1g087540.1, |
| | Medtr3g067935.1, Medtr7g110580.1, Medtr8g077420.1, Medtr5g080010.1 | | | |
| 2R-MYB | Medtr8g031360.1, | Medtr1g062940.1, | Medtr1g085880.1, | Medtr7g011170.1, |
| | Medtr4g065017.1, | Medtr4g102380.1, | Medtr4g094982.1, | Medtr5g079670.1, |
| | Medtr8g020490.1, | Medtr7g102110.1, | Medtr7g096930.1, | Medtr3g097450.1, |
| | Medtr0008s0280.1, | Medtr3g101290.1, | Medtr2g089450.1, | Medtr2g033170.1, |
| | Medtr5g088150.1, | Medtr7g037260.1, | Medtr4g100720.1, | Medtr7g010210.2, |
| | Medtr2g011660.1, | Medtr5g049190.1, | Medtr8g017440.1, | Medtr8g017350.1, |
| | Medtr4g082290.1, | Medtr6g006030.1, | Medtr5g078860.1, | Medtr4g088015.1, |
| | Medtr7g037130.1, | Medtr3g052450.1, | Medtr0251s0050.1, | Medtr2g034790.1, |
| | Medtr1g112760.1, | Medtr1g100667.1, | Medtr0140s0030.1, | Medtr1g043080.1, |
| | Medtr6g055910.1, | Medtr2g089620.1, | Medtr8g095390.1, | Medtr4g082040.1, |
| | Medtr5g088080.1, | Medtr5g079120.1, | Medtr5g078910.1, | Medtr5g007370.1, |
| | Medtr1g045610.1, | Medtr5g070020.1, | Medtr2g089420.1, | Medtr1g043050.1, |
| | Medtr1g017140.1, | Medtr7g109320.1, | Medtr6g027340.1, | Medtr1g085040.1, |
| | Medtr8g017500.1, | Medtr5g016510.1, | Medtr6g012690.1, | Medtr0197s0010.1, |
| | Medtr0489s0020.1, | Medtr5g088610.1, | Medtr3g463400.1, | Medtr5g078950.1, |
| | Medtr8g468380.1, | Medtr0247s0040.1, | Medtr1g083630.1, | Medtr5g010020.1, |
| | Medtr4g105660.1, | Medtr4g082230.1, | Medtr2g097910.1, | Medtr7g115550.2, |
| | Medtr2g088170.1, | Medtr3g039990.1, | Medtr4g097570.2, | Medtr7g115650.1, |
| | Medtr4g105130.1, | Medtr1g057980.1, | Medtr1g085640.1, | Medtr0008s0390.1, |
| | Medtr0008s0470.1, | Medtr3g065440.1, | Medtr5g062790.1, | Medtr8g042410.1, |
| | Medtr7g035350.1, | Medtr2g099740.1, | Medtr3g103570.1, | Medtr3g028740.1, |
| | Medtr5g038910.2, | Medtr1g008970.1, | Medtr6g074860.1, | Medtr6g027360.1, |
| | Medtr8g027345.1, | Medtr7g451170.1, | Medtr1g086510.1, | Medtr4g485530.1, |
| | Medtr0001s0360.1, | Medtr5g079220.1, | Medtr1g085770.1, | Medtr6g009430.1, |
| | Medtr5g488210.1, | Medtr1g076150.1, | Medtr8g017540.1, | Medtr4g073420.1, |
| | Medtr6g090405.1, | Medtr3g077110.1, | Medtr5g029840.1, | Medtr4g478180.1, |
| | Medtr0063s0090.1, | Medtr4g121460.1, | Medtr1g110460.1, | Medtr4g029540.1, |
| | Medtr6g012180.1, | Medtr1g100653.1, | Medtr4g057635.1, | Medtr4g125520.1, |
| | Medtr7g087130.1, | Medtr3g089045.1, | Medtr8g017340.1, | Medtr2g096380.1, |
| | Medtr4g128670.1, | Medtr3g052430.1, | Medtr2g067420.1, | Medtr7g110830.1, |
| | Medtr7g061550.1, | Medtr5g082910.1, | Medtr8g098860.1, | Medtr1g073170.1, |
| | Medtr1g086530.1, | Medtr5g079290.1, | Medtr7g086960.1, | Medtr5g041570.1, |
| | Medtr1g017000.1, | Medtr7g017260.1, | Medtr3g077650.1, | Medtr4g091490.1, |
| | Medtr4g063100.1, | Medtr4g019370.1, | Medtr5g014990.1, | Medtr6g027370.1, |
| | Medtr1g021230.1, | Medtr7g117730.1, | Medtr7g450950.1, | Medtr8g060940.1, |
| | Medtr3g074520.1, | Medtr2g095520.1, | Medtr7g076740.1, | Medtr3g083540.1, |
| | Medtr0193s0090.1, | Medtr5g088640.1, | Medtr3g461490.1, | Medtr7g111290.1, |
| | Medtr5g078800.1, | Medtr4g123040.1, | Medtr5g042030.1, | Medtr6g015455.1, |
| | Medtr5g078930.1, | Medtr3g045430.1, | Medtr7g035075.1, | Medtr5g488170.1, |
| | Medtr5g078140.1, | Medtr8g017390.1, | Medtr8g006470.1, | Medtr3g011610.1, |

| | | | | |
|--------|-------------------------------------|------------------|------------------|------------------|
| | Medtr2g064160.1 | | | |
| 3R-MYB | Medtr5g010650.1, Medtr7g461410.1 | Medtr3g110028.1, | Medtr7g061330.2, | Medtr1g026870.1, |
| 4R-MYB | Medtr6g080360.2 | | | |

Supplementary Table 12 Distribution of members of the Flax (*Linum usitatissimum*) MYB family

| Subfamily | Gene ID | | | |
|-----------|----------------------|----------------------|----------------------|----------------------|
| 1R-MYB | Lus.scaffold236.34, | Lus.scaffold200.70, | Lus.scaffold34.186, | Lus.scaffold117.96, |
| | Lus.scaffold169.129, | Lus.scaffold45.51, | Lus.scaffold75.255, | Lus.scaffold41.67, |
| | Lus.scaffold17.143, | Lus.scaffold2.510, | Lus.scaffold193.10, | Lus.scaffold132.143, |
| | Lus.scaffold315.32, | Lus.scaffold46.61, | Lus.scaffold70.188, | Lus.scaffold69.142, |
| | Lus.scaffold0.296, | Lus.scaffold126.85, | Lus.scaffold8.45, | Lus.scaffold152.10, |
| | Lus.scaffold0.747, | Lus.scaffold146.109, | Lus.scaffold84.219, | Lus.scaffold2.688, |
| | Lus.scaffold259.59, | Lus.scaffold263.11, | Lus.scaffold0.634, | Lus.scaffold0.207, |
| | Lus.scaffold139.125, | Lus.scaffold96.114, | Lus.scaffold344.22, | Lus.scaffold13.91, |
| | Lus.scaffold127.37, | Lus.scaffold144.133, | Lus.scaffold90.185, | Lus.scaffold393.20, |
| | Lus.scaffold16.256, | Lus.scaffold292.3, | Lus.scaffold111.105, | Lus.scaffold97.69, |
| | Lus.scaffold6.348, | Lus.scaffold80.178, | Lus.scaffold32.197, | Lus.scaffold168.79, |
| | Lus.scaffold168.80, | Lus.scaffold183.68, | Lus.scaffold170.74, | Lus.scaffold381.22, |
| | Lus.scaffold0.771, | Lus.scaffold335.10, | Lus.scaffold99.140, | Lus.scaffold130.65, |
| | Lus.scaffold130.64, | Lus.scaffold6.349, | Lus.scaffold130.63, | Lus.scaffold15.499, |
| | Lus.scaffold437.3, | Lus.scaffold687.1, | Lus.scaffold166.26, | Lus.scaffold2.457, |
| | Lus.scaffold96.147, | Lus.scaffold8.183, | Lus.scaffold55.180, | Lus.scaffold17.294, |
| | Lus.scaffold20.153, | Lus.scaffold2.383, | Lus.scaffold24.145, | Lus.scaffold57.65, |
| | Lus.scaffold8.98, | Lus.scaffold67.158, | Lus.scaffold81.161, | Lus.scaffold3.122, |
| | Lus.scaffold56.300, | Lus.scaffold139.87, | Lus.scaffold171.57, | Lus.scaffold231.80, |
| | Lus.scaffold72.208, | Lus.scaffold16.326, | Lus.scaffold329.24, | Lus.scaffold17.187, |
| | Lus.scaffold68.149, | Lus.scaffold81.3, | Lus.scaffold43.129, | Lus.scaffold110.139, |
| | Lus.scaffold13.475, | Lus.scaffold60.159, | Lus.scaffold294.5, | Lus.scaffold357.8, |
| | Lus.scaffold16.475, | Lus.scaffold55.343, | Lus.scaffold117.69, | Lus.scaffold169.103, |
| | Lus.scaffold83.7, | Lus.scaffold43.154, | Lus.scaffold98.38, | Lus.scaffold159.9, |
| | Lus.scaffold29.148, | Lus.scaffold11.162, | Lus.scaffold45.334, | Lus.scaffold218.70, |
| | Lus.scaffold48.34, | Lus.scaffold16.469, | Lus.scaffold140.135, | Lus.scaffold398.9, |
| | Lus.scaffold8.364, | Lus.scaffold135.69, | Lus.scaffold353.26, | Lus.scaffold39.28, |
| | Lus.scaffold431.15, | Lus.scaffold69.293, | Lus.scaffold196.27, | Lus.scaffold124.40, |
| | Lus.scaffold148.45, | Lus.scaffold276.37, | Lus.scaffold16.14, | Lus.scaffold192.66, |
| | Lus.scaffold238.4, | Lus.scaffold137.103, | Lus.scaffold25.188, | Lus.scaffold39.372, |
| | Lus.scaffold278.28, | Lus.scaffold102.35, | Lus.scaffold77.192, | Lus.scaffold3.670, |
| | Lus.scaffold8.276, | Lus.scaffold50.245, | Lus.scaffold265.26, | Lus.scaffold91.35, |
| | Lus.scaffold14.412, | Lus.scaffold210.38, | Lus.scaffold12.274, | Lus.scaffold152.117, |
| | Lus.scaffold8.186, | Lus.scaffold50.259, | Lus.scaffold135.106, | Lus.scaffold220.64, |
| | Lus.scaffold579.3, | Lus.scaffold34.70, | Lus.scaffold70.63, | Lus.scaffold199.23, |
| | Lus.scaffold66.25, | Lus.scaffold3.430, | Lus.scaffold43.252, | Lus.scaffold149.50, |
| | Lus.scaffold2.380, | Lus.scaffold13.351, | Lus.scaffold76.188, | Lus.scaffold550.3, |
| | Lus.scaffold15.206, | Lus.scaffold107.125, | Lus.scaffold282.42, | Lus.scaffold79.63, |
| | Lus.scaffold239.47, | Lus.scaffold110.170, | Lus.scaffold0.280, | Lus.scaffold64.41, |
| | Lus.scaffold29.291, | Lus.scaffold66.137, | Lus.scaffold272.58, | Lus.scaffold70.144, |
| | Lus.scaffold32.6, | Lus.scaffold3.712, | Lus.scaffold671.3, | Lus.scaffold483.6, |
| | Lus.scaffold383.3, | Lus.scaffold127.164, | Lus.scaffold159.59, | Lus.scaffold96.179, |

| | | | | |
|--------|--|---|---|--|
| | Lus.scaffold255.33, Lus.scaffold274.2, Lus.scaffold55.302, Lus.scaffold39.263, Lus.scaffold117.105, Lus.scaffold20.31, Lus.scaffold35.34, Lus.scaffold124.143, Lus.scaffold2.313, Lus.scaffold119.114, Lus.scaffold77.71, Lus.scaffold43.200, Lus.scaffold291.30, Lus.scaffold218.54, Lus.scaffold62.1, Lus.scaffold2.577, Lus.scaffold59.164, | Lus.scaffold22.118, Lus.scaffold31.353, Lus.scaffold135.175, Lus.scaffold139.57, Lus.scaffold122.141, Lus.scaffold76.49, Lus.scaffold140.1, Lus.scaffold1.57, Lus.scaffold23.348, Lus.scaffold255.12, Lus.scaffold73.68, Lus.scaffold140.48, Lus.scaffold170.51, Lus.scaffold1.403, Lus.scaffold31.57, Lus.scaffold18.231, | Lus.scaffold170.55, Lus.scaffold41.211, Lus.scaffold257.26, Lus.scaffold332.20, Lus.scaffold68.36, Lus.scaffold56.2, Lus.scaffold227.46, Lus.scaffold40.135, Lus.scaffold209.81, Lus.scaffold122.10, Lus.scaffold405.12, Lus.scaffold348.8, Lus.scaffold276.55, Lus.scaffold18.226, Lus.scaffold63.218, Lus.scaffold144.21, | Lus.scaffold34.146, Lus.scaffold532.3, Lus.scaffold34.185, Lus.scaffold255.9, Lus.scaffold94.61, Lus.scaffold11.213, Lus.scaffold43.251, Lus.scaffold24.242, Lus.scaffold221.28, Lus.scaffold4.116, Lus.scaffold100.8, Lus.scaffold29.38, Lus.scaffold95.49, Lus.scaffold358.11, Lus.scaffold74.62, Lus.scaffold102.153, Lus.scaffold26.35, Lus.scaffold156.84 |
| 2R-MYB | Lus.scaffold287.22, Lus.scaffold248.4, Lus.scaffold8.30, Lus.scaffold223.23, Lus.scaffold51.187, Lus.scaffold77.145, Lus.scaffold37.48, Lus.scaffold24.203, Lus.scaffold42.148, Lus.scaffold159.64, Lus.scaffold69.1, Lus.scaffold19.170, Lus.scaffold3.401, Lus.scaffold83.114, Lus.scaffold13.392, Lus.scaffold206.64, Lus.scaffold80.117, Lus.scaffold16.451, Lus.scaffold101.47, Lus.scaffold39.256, Lus.scaffold46.280, Lus.scaffold86.85, Lus.scaffold33.131, Lus.scaffold191.31, Lus.scaffold102.115, Lus.scaffold13.131, Lus.scaffold61.54, Lus.scaffold13.393, | Lus.scaffold32.194, Lus.scaffold34.229, Lus.scaffold846.1, Lus.scaffold69.149, Lus.scaffold353.10, Lus.scaffold231.37, Lus.scaffold109.55, Lus.scaffold157.106, Lus.scaffold30.88, Lus.scaffold0.682, Lus.scaffold193.11, Lus.scaffold13.391, Lus.scaffold0.369, Lus.scaffold36.180, Lus.scaffold92.116, Lus.scaffold3.27, Lus.scaffold326.2, Lus.scaffold30.79, Lus.scaffold354.6, Lus.scaffold378.23, Lus.scaffold155.16, Lus.scaffold256.46, Lus.scaffold59.140, Lus.scaffold272.65, Lus.scaffold17.356, Lus.scaffold65.70, Lus.scaffold15.216, Lus.scaffold73.142, | Lus.scaffold8.490, Lus.scaffold118.150, Lus.scaffold13.43, Lus.scaffold39.171, Lus.scaffold88.34, Lus.scaffold75.205, Lus.scaffold205.58, Lus.scaffold41.80, Lus.scaffold69.175, Lus.scaffold290.52, Lus.scaffold198.54, Lus.scaffold44.125, Lus.scaffold83.193, Lus.scaffold83.57, Lus.scaffold69.174, Lus.scaffold25.217, Lus.scaffold46.145, Lus.scaffold2.413, Lus.scaffold197.90, Lus.scaffold133.20, Lus.scaffold20.444, Lus.scaffold13.394, Lus.scaffold69.176, Lus.scaffold68.83, Lus.scaffold223.20, Lus.scaffold13.84, Lus.scaffold312.10, Lus.scaffold71.104, | Lus.scaffold59.139, Lus.scaffold53.124, Lus.scaffold152.51, Lus.scaffold150.25, Lus.scaffold75.149, Lus.scaffold81.169, Lus.scaffold35.141, Lus.scaffold203.26, Lus.scaffold77.112, Lus.scaffold185.48, Lus.scaffold2.524, Lus.scaffold147.18, Lus.scaffold338.11, Lus.scaffold10.29, Lus.scaffold50.74, Lus.scaffold265.14, Lus.scaffold39.293, Lus.scaffold82.98, Lus.scaffold147.130, Lus.scaffold43.301, Lus.scaffold64.262, Lus.scaffold66.39, Lus.scaffold32.368, Lus.scaffold101.180, Lus.scaffold64.107, Lus.scaffold11.182, Lus.scaffold0.704, Lus.scaffold63.283, |

| | | | | |
|--------|--|----------------------|----------------------|---------------------|
| | Lus.scaffold165.140, | Lus.scaffold127.44, | Lus.scaffold440.7, | Lus.scaffold188.9, |
| | Lus.scaffold68.85, | Lus.scaffold8.155, | Lus.scaffold32.297, | Lus.scaffold156.27, |
| | Lus.scaffold45.326, | Lus.scaffold35.131, | Lus.scaffold11.366, | Lus.scaffold88.20, |
| | Lus.scaffold106.67, | Lus.scaffold96.15, | Lus.scaffold11.72, | Lus.scaffold39.294, |
| | Lus.scaffold69.46, | Lus.scaffold133.21, | Lus.scaffold64.235, | Lus.scaffold105.40, |
| | Lus.scaffold279.32, | Lus.scaffold219.72, | Lus.scaffold196.102, | Lus.scaffold70.240, |
| | Lus.scaffold74.170, | Lus.scaffold147.17, | Lus.scaffold0.141, | Lus.scaffold13.232, |
| | Lus.scaffold104.58, | Lus.scaffold76.199, | Lus.scaffold453.2, | Lus.scaffold259.57, |
| | Lus.scaffold70.198, | Lus.scaffold8.374, | Lus.scaffold223.21, | Lus.scaffold151.90, |
| | Lus.scaffold83.113, | Lus.scaffold217.66, | Lus.scaffold55.245, | Lus.scaffold137.65, |
| | Lus.scaffold0.146, | Lus.scaffold21.181, | Lus.scaffold136.93, | Lus.scaffold0.833, |
| | Lus.scaffold150.40, | Lus.scaffold72.161, | Lus.scaffold80.38, | Lus.scaffold199.77, |
| | Lus.scaffold17.93, | Lus.scaffold6.31, | Lus.scaffold54.116, | Lus.scaffold31.241, |
| | Lus.scaffold45.213, | Lus.scaffold232.59, | Lus.scaffold110.62, | Lus.scaffold43.50, |
| | Lus.scaffold102.77, | Lus.scaffold9.79, | Lus.scaffold28.14, | Lus.scaffold45.63, |
| | Lus.scaffold68.86, | Lus.scaffold20.89, | Lus.scaffold0.168, | Lus.scaffold239.42, |
| | Lus.scaffold29.280, | Lus.scaffold4.134, | Lus.scaffold136.97, | Lus.scaffold101.16, |
| | Lus.scaffold83.58, | Lus.scaffold18.73, | Lus.scaffold100.96, | Lus.scaffold31.283, |
| | Lus.scaffold122.2, | Lus.scaffold133.113, | Lus.scaffold131.105, | Lus.scaffold69.140, |
| | Lus.scaffold34.195, | Lus.scaffold46.328, | Lus.scaffold30.134, | Lus.scaffold18.313, |
| | Lus.scaffold48.227, | Lus.scaffold149.120 | | |
| 3R-MYB | Lus.scaffold10.244, Lus.scaffold5.149, Lus.scaffold4.136 | | | |
| 4R-MYB | Lus.scaffold13.15 | | | |
| 5R-MYB | Lus.scaffold127.115 | | | |

Supplementary Table 13 DEGs of *Arabidopsis thaliana* MYB family under drought stress

| MYB subfamily | Up-regulated DEGs | Down-regulated DEGs |
|-----------------|---|--|
| 2R-MYB | <i>AtMYB105, AtMYB108, AtMYB18, AtMYB19, AtMYB2, AtMYB49, AtMYB50, AtMYB59, AtMYB6, AtMYB60, AtMYB61, AtMYB69, AtMYB71, AtMYB73, AtMYB74, AtMYB86, AtMYB87, AtMYB88</i> | <i>AtMYB10, AtMYB14, AtMYB15, AtMYB45, AtMYB63, AtMYB72, AtMYB94</i> |
| 1R-MYB | <i>At-CCAI-12, At-CCAI-16, At-CCAI-17, At-CCAI-4, At-CPC-3, At-R-R-3, At-R-R-5, At-R-R-7, At-TBP-L-4, AT1G13300.1, AT1G25550.1, AT1G67710.1, AT2G44730.1, AT3G12730.1, AT3G25790.1, AT4G16420.2, AT4G18020.4, AT5G17300.1</i> | <i>At-TBP-TRFL3, AT2G02060.1, AT2G42660.1, AT5G42630.2</i> |
| 4R-MYB / 3R-MYB | <i>AtMYB4R1</i> | <i>AtMYB3R1</i> |

Note: DEGs: Different expression genes, the selection criteria as $p\text{value} < 0.05$, $|\log_2\text{FoldChange}| > 1$.

Supplementary Table 14 DEGs of Wheat (*Triticum aestivum*) MYB transcription factor family under drought stress

| MYB subfamily | Up-regulated DEGs | Down-regulated DEGs |
|---------------|---|--|
| 2R-MYB | <i>Traes.B68E59AAB.1</i> , <i>Traes.B44ECE28C.1</i> , <i>Traes.47E2D90AC.1</i> , <i>Traes.47E2D90AC1.1</i> , <i>Traes.A8AF980F3.1</i> , <i>Traes.25320ED72.1</i> , <i>Traes.429583AEC.1</i> , <i>Traes.C1D4586B1.2</i> , <i>Traes.2BA02CAA9.1</i> , <i>Traes.7755E4A8A.1</i> , <i>Traes.469ED3135.1</i> | <i>Traes.1A93B0C96.1</i> , <i>Traes.343F2D219.1</i> , <i>Traes.605C25CDF.2</i> , <i>Traes.FA7059723.1</i> , <i>Traes.34A0848F2.1</i> , <i>Traes.79F1B50DF.1</i> , <i>Traes.DAA2104F5.2</i> , <i>Traes.54E6F0446.1</i> , <i>Traes.D39684C41.2</i> , <i>Traes.49959692B.1</i> , <i>Traes.49959692B1.1</i> , <i>Traes.3883DC244.1</i> , <i>Traes.E4294BADC.1</i> , <i>Traes.14C563681.1</i> , <i>Traes.926486EE0.1</i> , <i>Traes.54D562BC2.1</i> , <i>Traes.89BA7115C.1</i> , <i>Traes.BB730675A.1</i> , <i>Traes.8E4A831B6.1</i> , <i>Traes.67FD04DA0.1</i> , <i>Traes.CFEE687CF.1</i> , <i>Traes.D1B5EA05F.1</i> , <i>Traes.FDFCBA57D.1</i> , <i>Traes.FDFCBA57D1.1</i> , <i>Traes.5100A9609.1</i> , <i>Traes.E1D3D8DAA1.1</i> , <i>Traes.8BAAC240D.1</i> |
| 1R-MYB | <i>Traes.4490ED4C6.1</i> , <i>Traes.7589A1385.3</i> , <i>Traes.92939B028.1</i> , <i>Traes.55A3F252C.1</i> , <i>Traes.C729D25F8.1</i> , <i>Traes.F09C7CA19.1</i> , <i>Traes.A3420082C.1</i> , <i>Traes.AE7851A5F.1</i> , <i>Traes.05E08500B.3</i> , <i>Traes.DF23FE973.1</i> , <i>Traes.98EA87DFA1.1</i> , <i>Traes.D98C7CE92.1</i> , <i>Traes.1AE458202.2</i> , <i>Traes.B2F166A31.1</i> , <i>Traes.13C2391DC.2</i> , <i>Traes.1144FC823.1</i> , <i>Traes.19F222799.7</i> , <i>Traes.310E46F15.7</i> , <i>Traes.C6BEE3896.1</i> | <i>Traes.1360F98E7.1</i> , <i>Traes.169CE67D8.1</i> , <i>Traes.6506152C8.2</i> , <i>Traes.4EFA77404.1</i> , <i>Traes.3041037F1.1</i> , <i>Traes.03C96BECE.1</i> , <i>Traes.77F235694.1</i> , <i>Traes.5CB4803CD.2</i> , <i>Traes.61E35C455.1</i> , <i>Traes.72D2B7C35.1</i> , <i>Traes.C0A2B4F041.1</i> , <i>Traes.44456AE22.1</i> , <i>Traes.991931CF9.2</i> , <i>Traes.0535EFFBE.1</i> , <i>Traes.ED6E0EE34.1</i> , <i>Traes.09DD5A1DC.1</i> , <i>Traes.17C8D2707.2</i> , <i>Traes.999E12D5D.1</i> , <i>Traes.BF90D232B.1</i> |

Note: DEGs: Different expression genes, the selection criteria as $p\text{value} < 0.05$, $|\log_2\text{FoldChange}| > 1$.

Supplementary Table 15 DEGs of Rice (*Oryza sativa*) MYB transcription factor family under drought stress

| MYB subfamily | Up-regulated DEGs | Down-regulated DEGs |
|---------------|-----------------------------------|---|
| 2R-MYB | <i>Os06g02250.1, Os11g47460.1</i> | <i>Os01g16810.1, Os01g19330.1, Os01g49160.1, Os01g65370.1, Os01g74410.1, Os02g40530.1, Os02g41510.1, Os03g20090.1, Os04g43680.1, Os05g04210.1, Os05g48010.1, Os07g48870.1, Os08g43550.1, Os09g23620.1, Os10g33810.1</i> |
| 1R-MYB | <i>Os01g74020.1</i> | <i>Os01g64360.1, Os03g12350.1, Os03g55590.1, Os04g45940.1, Os05g37060.1, Os06g45890.1, Os08g06110.2, Os08g39980.1</i> |

Note: DEGs: Different expression genes, the selection criteria as $p\text{value} < 0.05$, $|\log_2\text{FoldChange}| > 1$.

Supplementary Table 16 DEGs of Soybean (*Glycine max*) MYB transcription factor family under drought

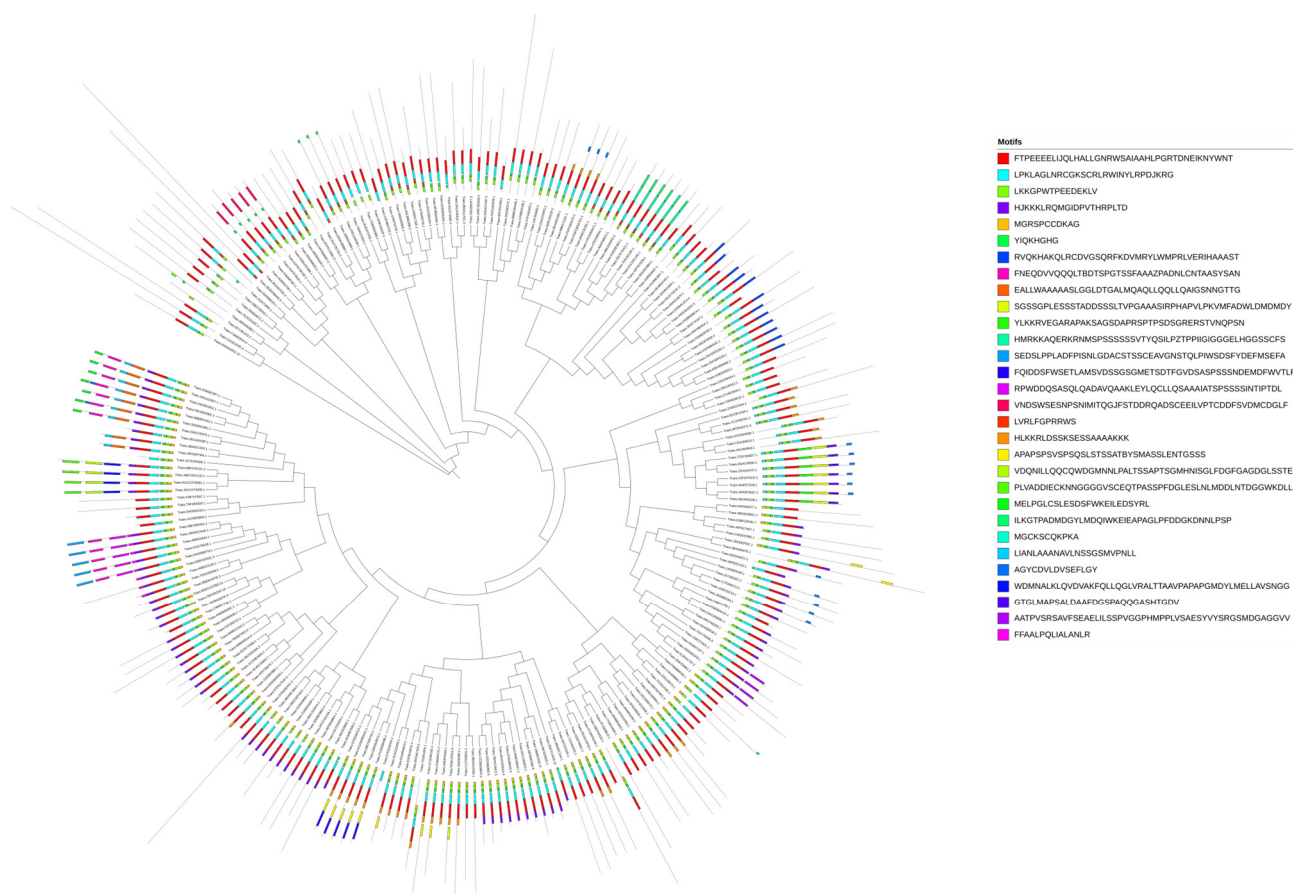
| stress | | |
|---------------|--|--|
| MYB subfamily | Up-regulated DEGs | Down-regulated DEGs |
| 2R-MYB | <i>Glyma.02G005600.1, Glyma.02G006800.1,</i> <i>Glyma.02G009800.1, Glyma.02G124300.1,</i> <i>Glyma.02G244600.1, Glyma.03G163100.1,</i> <i>Glyma.03G225200.1, Glyma.03G227700.2,</i> <i>Glyma.05G072600.1, Glyma.05G109200.1,</i> <i>Glyma.05G234600.1, Glyma.06G103300.1,</i> <i>Glyma.07G054000.1, Glyma.08G336500.1,</i> <i>Glyma.09G032100.1, Glyma.09G139000.1,</i> <i>Glyma.09G169300.1, Glyma.09G183400.1,</i> <i>Glyma.10G006600.1, Glyma.10G142200.1,</i> <i>Glyma.10G165800.1, Glyma.10G180800.1,</i> <i>Glyma.10G236400.2, Glyma.11G021600.1,</i> <i>Glyma.11G194100.1, Glyma.12G017000.1,</i> <i>Glyma.12G032200.1, Glyma.13G141900.1,</i> <i>Glyma.13G322900.1, Glyma.14G091500.1,</i> <i>Glyma.14G214500.1, Glyma.15G025500.1,</i> <i>Glyma.15G259400.3, Glyma.16G023000.1,</i> <i>Glyma.16G092100.2, Glyma.16G189400.1,</i> <i>Glyma.17G158000.1, Glyma.17G232220.1,</i> <i>Glyma.17G245200.1, Glyma.18G071600.1,</i> <i>Glyma.19G055800.1, Glyma.19G184500.1,</i> <i>Glyma.19G224600.1, Glyma.19G248100.1,</i> <i>Glyma.20G090700.1</i> | <i>Glyma.01G067800.1, Glyma.01G211500.1,</i> <i>Glyma.03G221900.1, Glyma.05G051700.1,</i> <i>Glyma.06G121200.1, Glyma.06G193600.1,</i> <i>Glyma.07G189300.1, Glyma.08G059900.1,</i> <i>Glyma.10G132200.3, Glyma.10G191000.1,</i> <i>Glyma.10G273000.1, Glyma.11G034900.1,</i> <i>Glyma.11G045400.1, Glyma.12G066000.1,</i> <i>Glyma.12G104600.1, Glyma.13G187500.6,</i> <i>Glyma.13G282100.1, Glyma.14G063400.1,</i> <i>Glyma.15G225300.5, Glyma.17G065800.1,</i> <i>Glyma.17G133800.6, Glyma.17G162100.1,</i> <i>Glyma.17G237900.1, Glyma.18G040700.1,</i> <i>Glyma.18G273300.1, Glyma.18G273400.1,</i> <i>Glyma.20G082300.1, Glyma.20G199300.1</i> |
| | <i>Glyma.01G123600.1, Glyma.02G055900.1,</i> <i>Glyma.03G051400.1, Glyma.03G143600.2,</i> <i>Glyma.05G158900.1, Glyma.06G303100.3,</i> <i>Glyma.08G029400.1, Glyma.08G116700.1,</i> <i>Glyma.11G136600.3, Glyma.11G227200.2,</i> <i>Glyma.12G100600.1, Glyma.12G211600.1,</i> <i>Glyma.13G155400.1, Glyma.13G290100.1,</i> <i>Glyma.16G138400.1, Glyma.17G217100.1,</i> <i>Glyma.18G030300.2, Glyma.18G204900.2</i> | <i>Glyma.01G003000.1, Glyma.01G038600.1,</i> <i>Glyma.02G070900.2, Glyma.02G178100.2,</i> <i>Glyma.02G241000.1, Glyma.03G078000.1,</i> <i>Glyma.03G261800.4, Glyma.05G144500.1,</i> <i>Glyma.06G213400.1, Glyma.07G133000.5,</i> <i>Glyma.07G146300.1, Glyma.08G100900.1,</i> <i>Glyma.08G163500.2, Glyma.09G167900.1,</i> <i>Glyma.11G058600.1, Glyma.11G142900.3,</i> <i>Glyma.11G176500.1, Glyma.11G183400.1,</i> <i>Glyma.11G211643.1, Glyma.12G089100.1,</i> <i>Glyma.13G197800.2, Glyma.14G210600.1,</i> <i>Glyma.14G211900.3, Glyma.15G215000.1,</i> <i>Glyma.15G263700.9, Glyma.16G152200.1,</i> <i>Glyma.16G217700.1, Glyma.18G010800.1,</i> <i>Glyma.18G044200.1, Glyma.18G065200.1,</i> <i>Glyma.19G247600.3, Glyma.20G178500.2,</i> <i>Glyma.20G185167.1</i> |
| 3R-MYB | <i>Glyma.04G080600.3</i> | <i>Glyma.01G217500.1</i> |

Note: DEGs: Different expression genes, the selection criteria as $p\text{value} < 0.05$, $|\log_2\text{FoldChange}| > 1$.

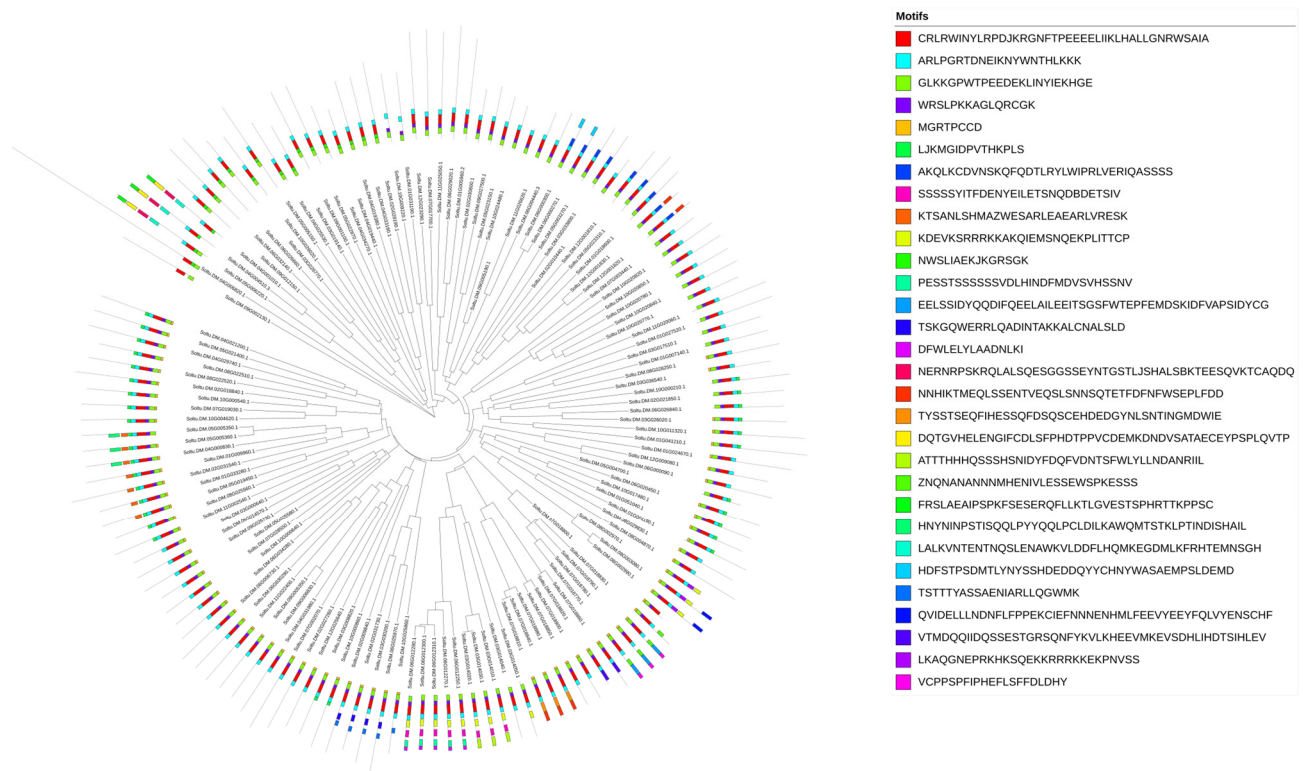
Supplementary Table 17 DEGs of Potato (*Solanum tuberosum*) MYB transcription factor family under drought stress

| MYB subfamily | Up-regulated DEGs | Down-regulated DEGs |
|---------------|---|---|
| 2R-MYB | | <i>Soltu.DM.01G018600.1, Soltu.DM.02G018840.1, Soltu.DM.02G028190.1, Soltu.DM.02G030600.1, Soltu.DM.03G014050.1, Soltu.DM.03G033800.1, Soltu.DM.04G004510.3, Soltu.DM.04G021200.1, Soltu.DM.04G033180.1, Soltu.DM.04G034270.1, Soltu.DM.05G023150.1, Soltu.DM.06G012280.1, Soltu.DM.06G020450.1, Soltu.DM.07G019030.1, Soltu.DM.09G027500.1, Soltu.DM.10G000540.1, Soltu.DM.10G004620.1, Soltu.DM.10G017480.1, Soltu.DM.12G025640.1</i> |
| | <i>Soltu.DM.01G024670.1, Soltu.DM.03G017510.1, Soltu.DM.01G041210.1</i> | |
| 1R-MYB | | <i>Soltu.DM.02G004510.1, Soltu.DM.02G018190.1, Soltu.DM.03G027560.1, Soltu.DM.05G010540.2, Soltu.DM.05G022630.1, Soltu.DM.06G003930.1, Soltu.DM.06G031660.1, Soltu.DM.06G032070.1, Soltu.DM.07G010910.1, Soltu.DM.07G014720.1, Soltu.DM.08G001080.1, Soltu.DM.11G006750.1, Soltu.DM.11G006790.1, Soltu.DM.11G006910.1, Soltu.DM.11G023110.1, Soltu.DM.12G023850.1</i> |
| | <i>Soltu.DM.03G019030.1, Soltu.DM.05G026640.1, Soltu.DM.09G028940.1, Soltu.DM.10G000080.2, Soltu.DM.10G023770.1, Soltu.DM.12G023200.1</i> | |

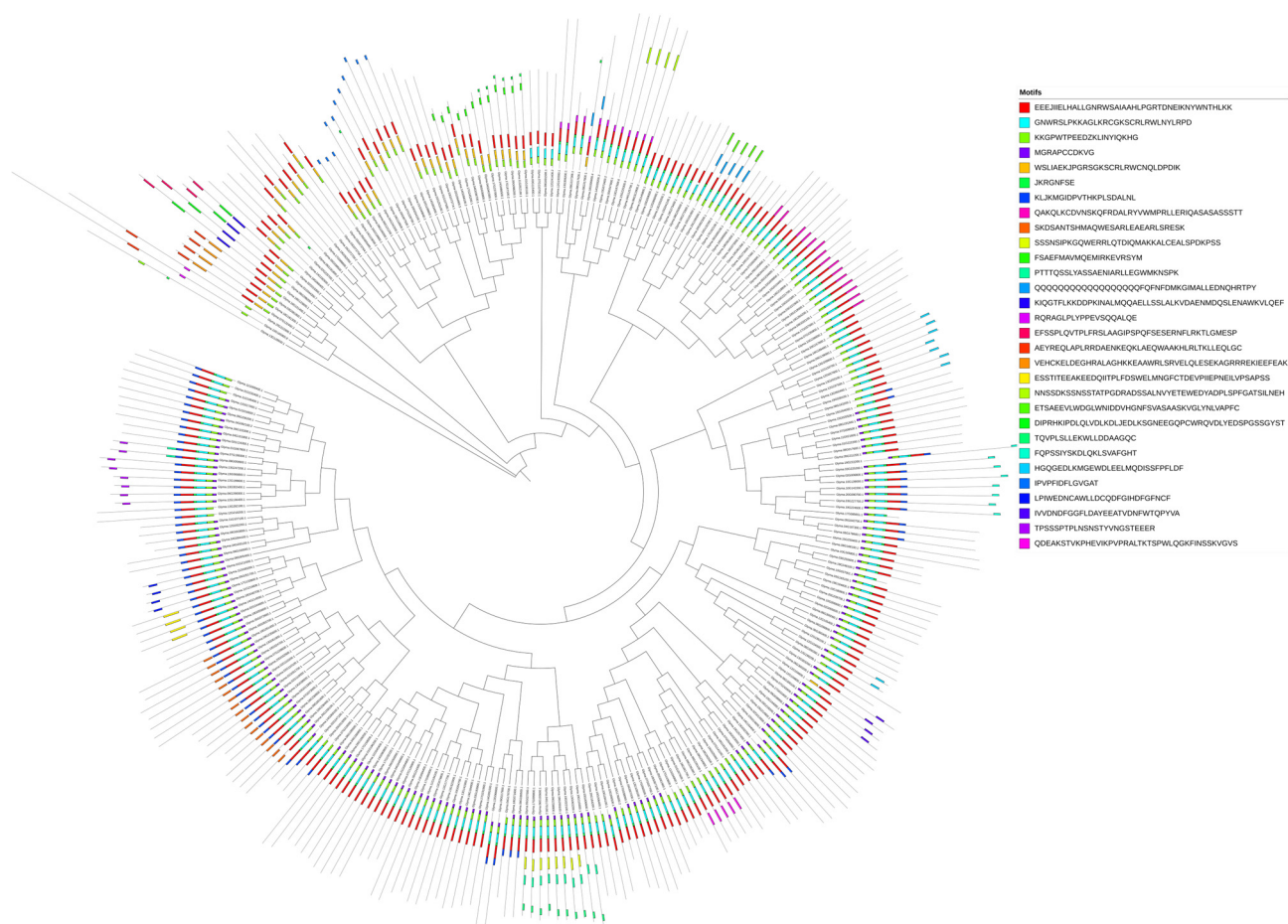
Note: DEGs: Different expression genes, the selection criteria as $p\text{value} < 0.05$, $|\log_2\text{FoldChange}| > 1$.



Supplementary Figure 1 Motifs of 2R-MYB subfamily genes Conserved in wheat. The gene tree on the left is a phylogenetic tree of wheat 2R-MYB subfamily members constructed based on the adjacency method (NJ) algorithm. The outer circle is the distribution of member conserved motif detected by the MEME suite (<https://meme-suite.org/meme/index.html>) (accessed on 29 January 2023), and the specific sequence information of conserved modules is on the right.



Supplementary Figure 2 Motifs of 2R-MYB subfamily genes Conserved in potato. The gene tree on the left is a phylogenetic tree of potato 2R-MYB subfamily members constructed based on the adjacency method (NJ) algorithm. The outer circle is the distribution of member conserved motif detected by the MEME suite (<https://meme-suite.org/meme/index.html>) (accessed on 1 November 2022), and the specific sequence information of conserved modules is on the right.



Supplementary Figure 3 Motifs of 2R-MYB subfamily genes Conserved in soybean. The gene tree on the left is a phylogenetic tree of soybean 2R-MYB subfamily members constructed based on the adjacency method (NJ) algorithm. The outer circle is the distribution of member conserved motif detected by the MEME suite (<https://meme-suite.org/meme/index.html>) (accessed on 1 November 2022), and the specific sequence information of conserved modules is on the right.