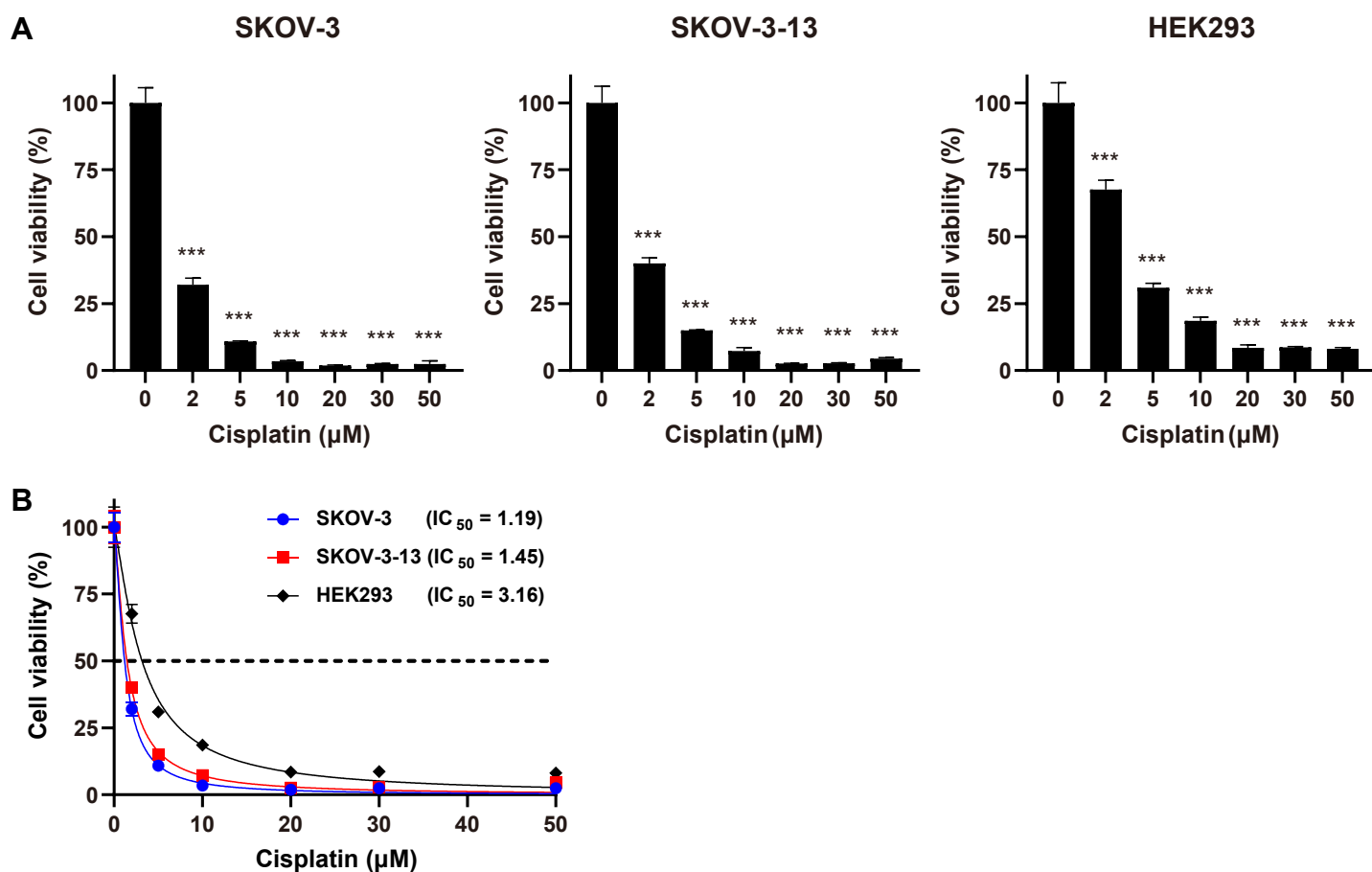
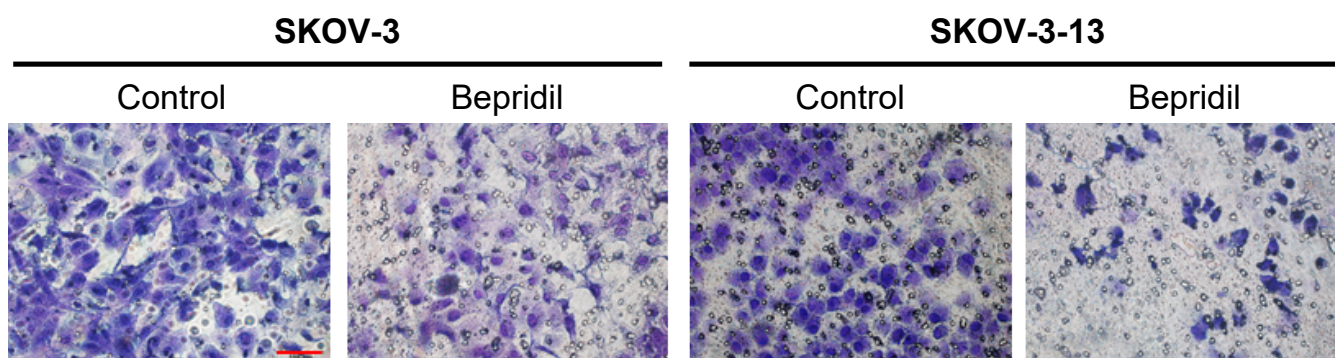


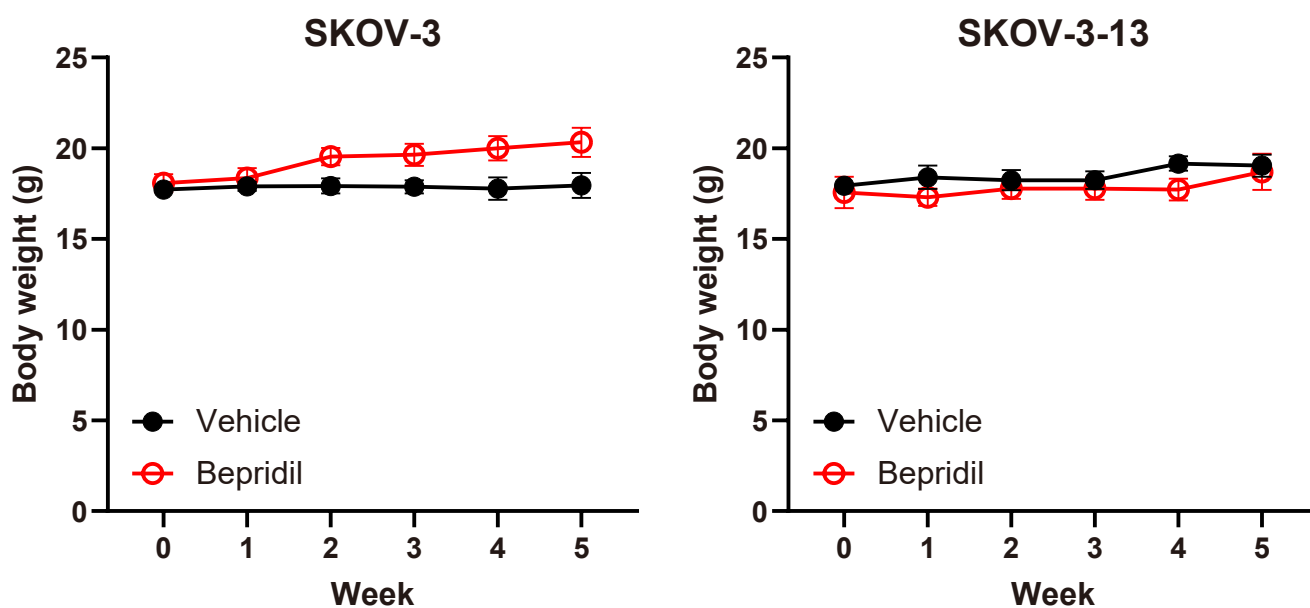
## Supplementary Figures



**Figure S1. The effect of cisplatin on the viability of ovarian cancer cells.** (A, B) The cell viability of SKOV-3, SKOV-3-13, and HEK293 cells was measured using WST assays following a 72-h treatment with different concentrations of cisplatin. The results are presented in bar graphs (A) and curve graphs with non-linear regression (B). Statistical significance (one-way ANOVA with Dunnett's *post hoc* test) was employed, and the results were reported as means  $\pm$  SEM (\*\* $P < 0.001$ ). The asterisks above the treatment groups indicate significant statistical differences when compared to the untreated controls.



**Figure S2. Transwell migration assays.** Transwell migration assays of SKOV-3 and SKOV-3-13 cells in the untreated control and bepridil-treated (15  $\mu$ M) groups at 48 h. The migratory cells were fixed and stained with 0.5% crystal violet. Scale bar: 100  $\mu$ m.



**Figure S3. The effect of bepridil on the body weight of a mouse ovarian cancer xenograft model.** Body weight of all mice were measured weekly. The mean values with SEM were calculated, and statistical analysis (multiple *t*-test) was performed. All data points indicate no significant differences between groups.