

Figure S1. Chromatographic profile of RochD. A). Total Ion Chromatogram (TIC); B). eXtracted Ion Chromatogram (XIC) at m/z 483.3469; C). XIC at m/z 497.3625; D). XIC at m/z 345.2060; E). XIC at m/z 415.2477; F). XIC at m/z 429.2636.

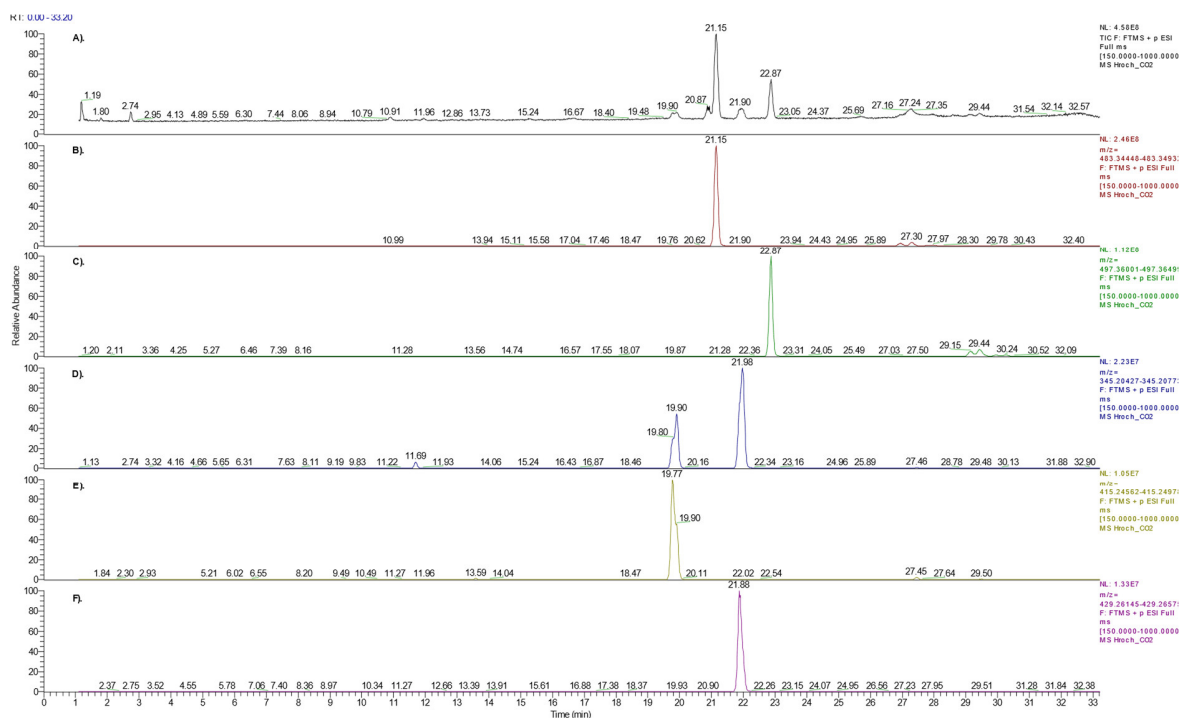


Figure S2. Chromatographic profile of RochC. A). TIC; B). XIC at m/z 483.3469; C). XIC at m/z 497.3625; D). XIC at m/z 345.2060; E). XIC at m/z 415.2477; F). XIC at m/z 429.2636.

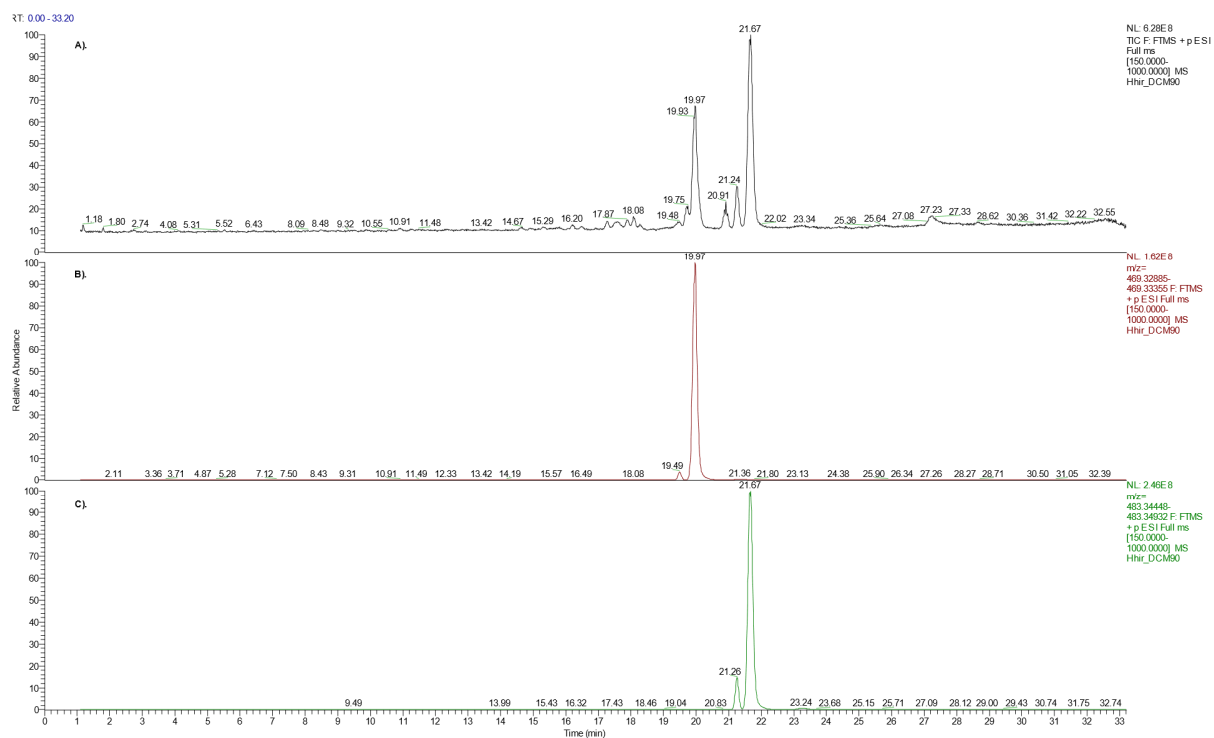


Figure S3. Chromatographic profile of HirDM90. A). TIC; B). XIC at m/z 469.3312; C). XIC at m/z 483.3469.