

Supplementary Materials

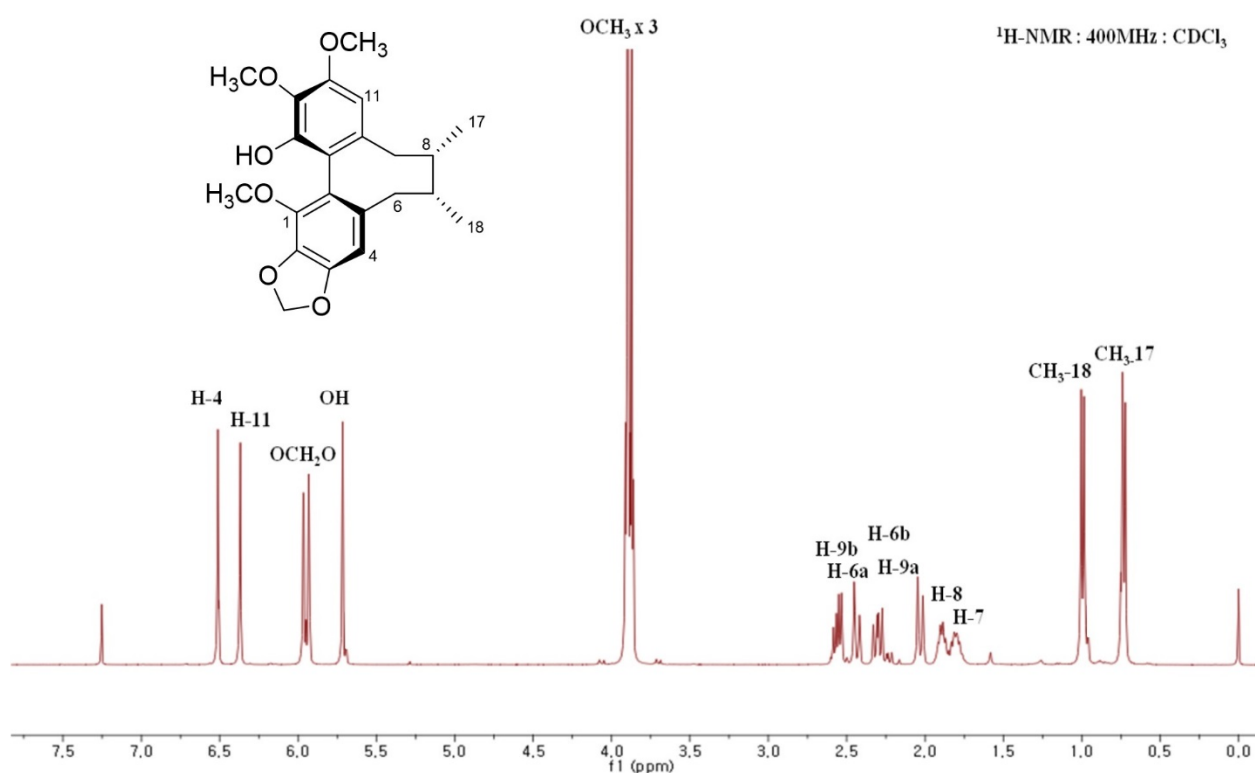
# Gomisin L1, a Lignan Isolated from Schisandra Berries, Induces Apoptosis by Regulating NADPH Oxidase in Human Ovarian Cancer Cells

Young-Hyun Ko <sup>1</sup>, Miran Jeong <sup>1</sup>, Dae-Sik Jang <sup>2</sup>, and Jung-Hye Choi <sup>1,2,\*</sup>

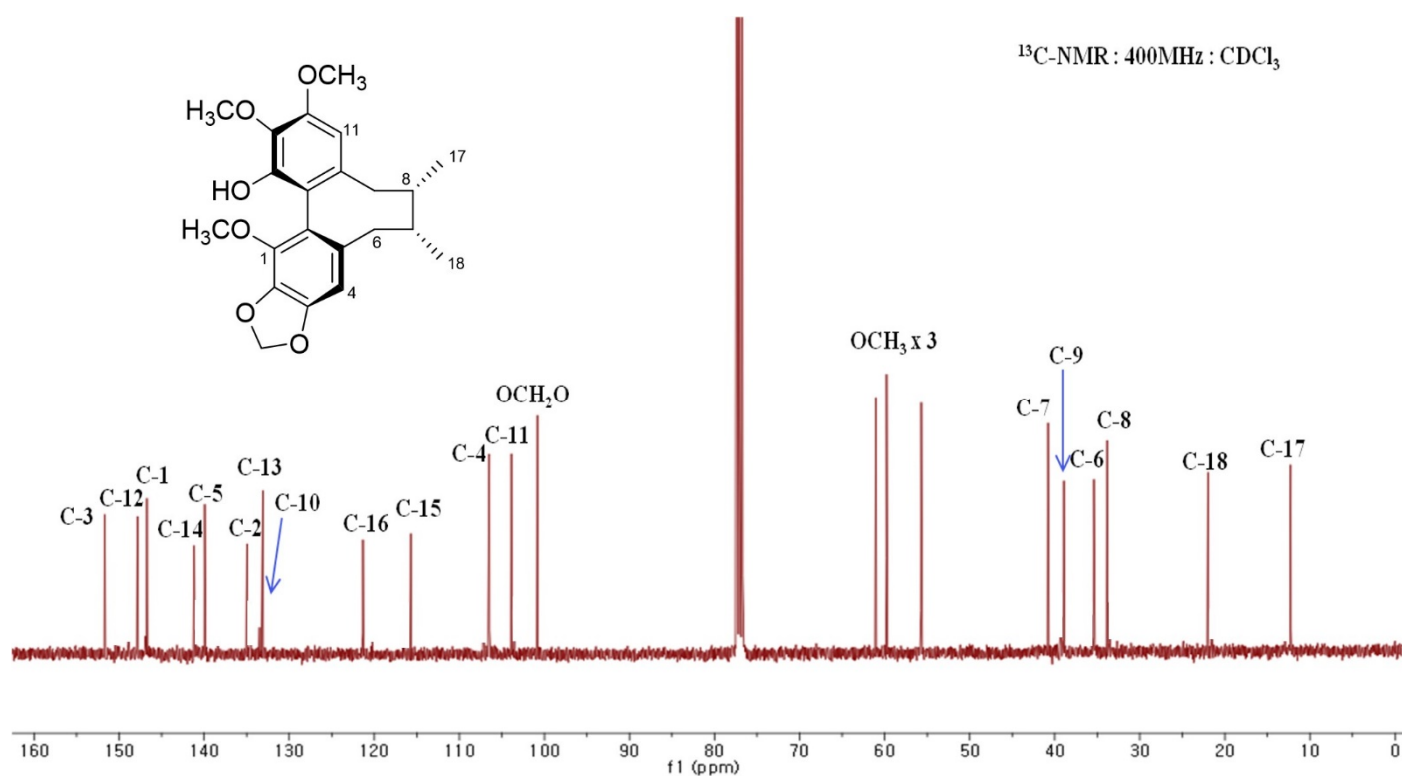
<sup>1</sup> Division of Molecular Biology, College of Pharmacy, Kyung Hee University, Seoul 02447, Korea; kyh122@khu.ac.kr (Y.H.K.); jeongmr@khu.ac.kr (M.J.)

<sup>2</sup> Department of Biomedical and Pharmaceutical Sciences, Kyung Hee University, Seoul 02447, Korea; dsjang@khu.ac.kr

\* Correspondence: jchoi@khu.ac.kr



**Figure S1.** <sup>1</sup>H-NMR spectrum of gomisin L1 from the fruits of *Schisandra chinensis* (400 MHz, CDCl<sub>3</sub>).



**Figure S2.** <sup>13</sup>C-NMR spectrum of gomisin L1 from the fruits of *Schisandra chinensis* (100 MHz, CDCl<sub>3</sub>).