

Supplementary Material of Activation of the Hippo Pathway in *Rana sylvatica*: Yapping Stops in Response to Anoxia

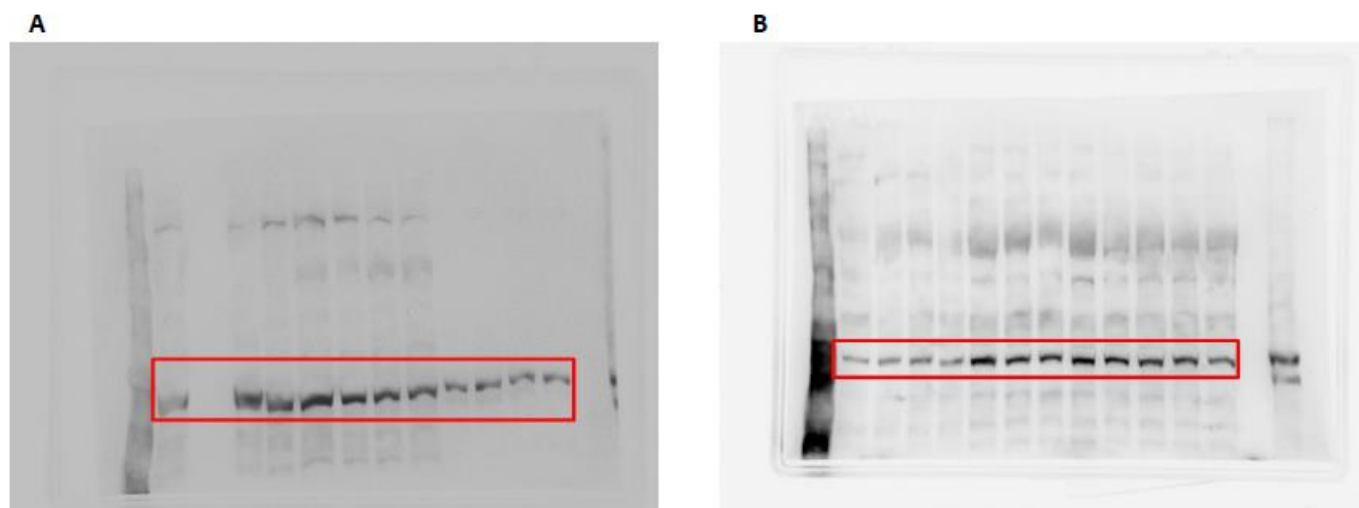


Figure S1. The ECL showing total protein levels of MST1 for (A) liver and (B) heart whole tissue extracts of *R. sylvatica*. Lane 1 representing a protein mol. wt. ladder, lane 2 to 5 represents control samples, lane 6 to 9 represents 24 h anoxia exposure and lane 10 to 13 represent 4 h aerobic recovery from anoxia. The protein quantified is highlighted in red.

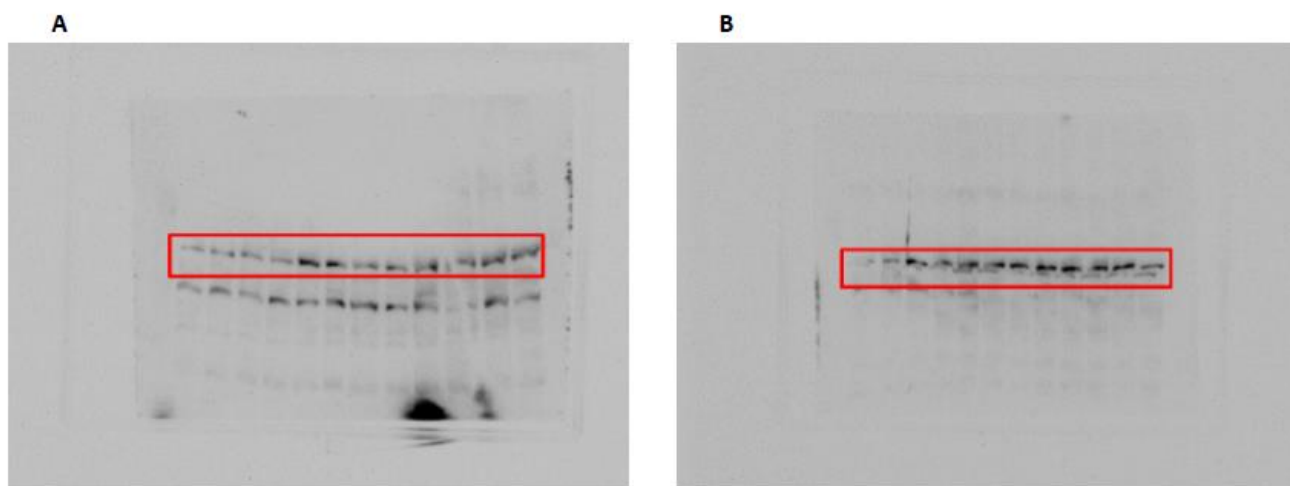


Figure S2. The ECL showing total protein levels of MST2 for (A) liver and (B) heart whole-tissue extracts of *R. sylvatica*. Other information similar to Figure S1.

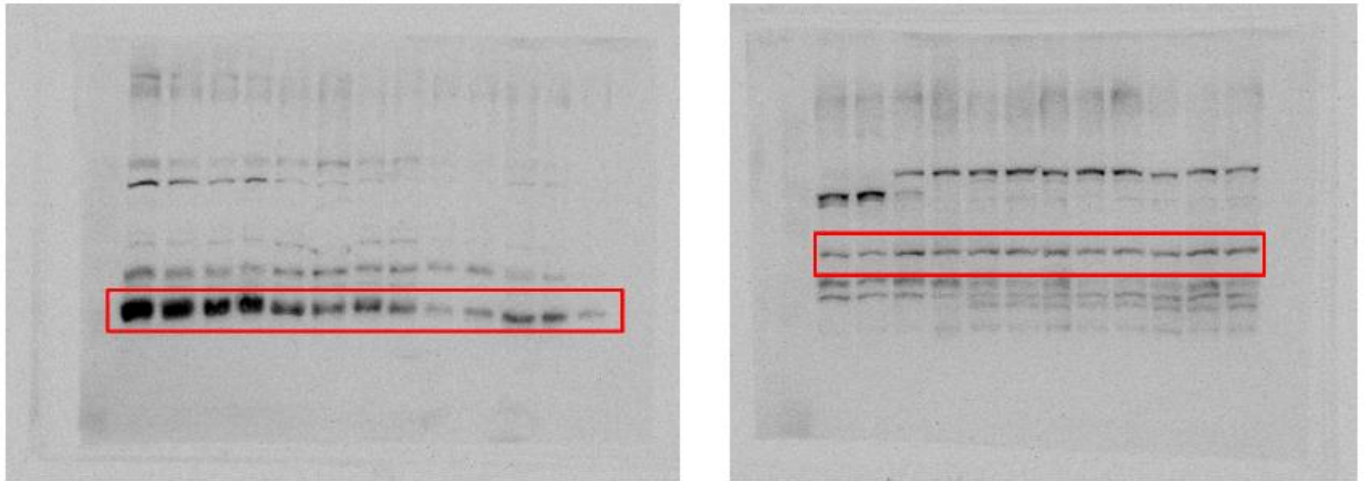


Figure S3. The ECL showing total protein levels of SAV for (A) liver and (B) heart whole-tissue extracts of *R. sylvatica*. Other information similar to Figure S1.

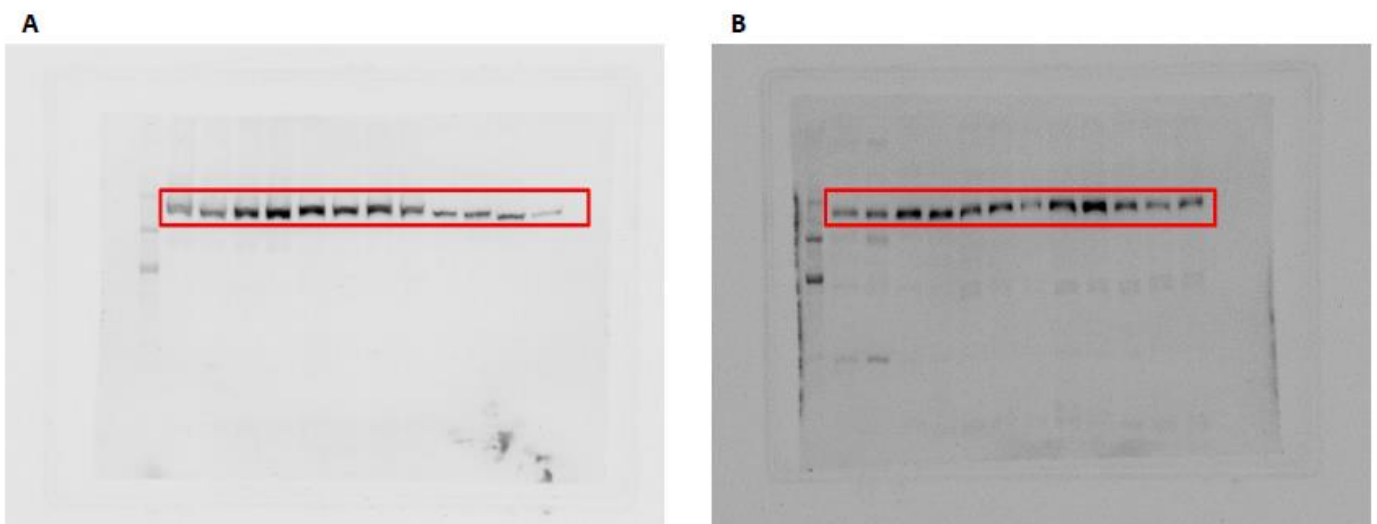


Figure S4. The ECL showing total protein levels of LATS for (A) liver and (B) heart whole-tissue extracts of *R. sylvatica*. Other information similar to Figure S1.

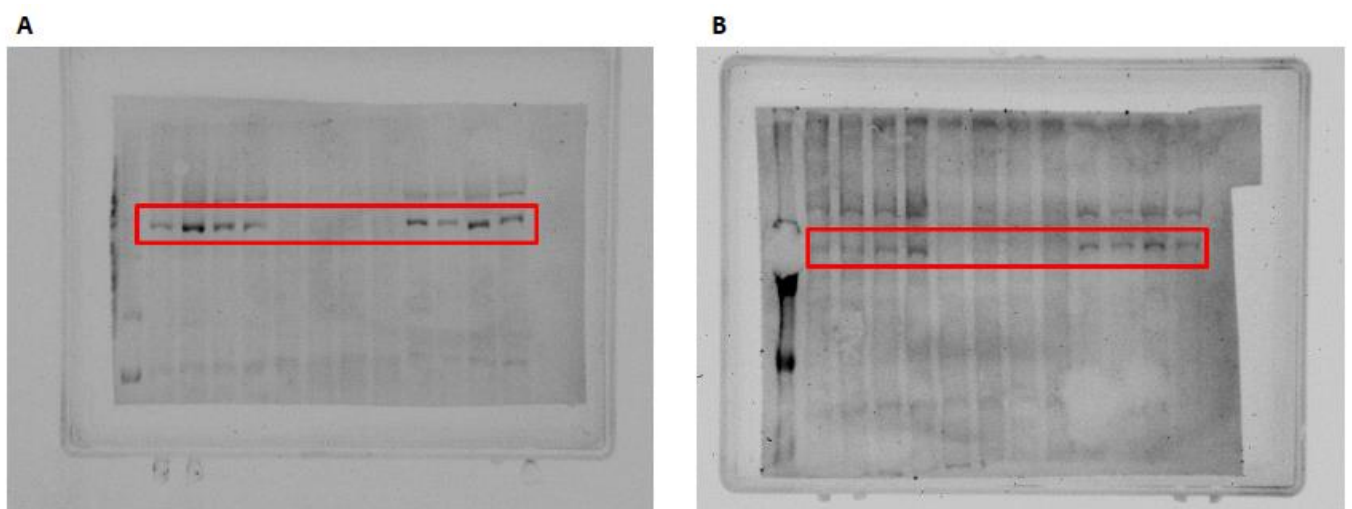


Figure S5. The ECL showing total protein levels of pLATS for (A) liver and (B) heart whole-tissue extracts of *R. sylvatica*. Other information similar to Figure S1.

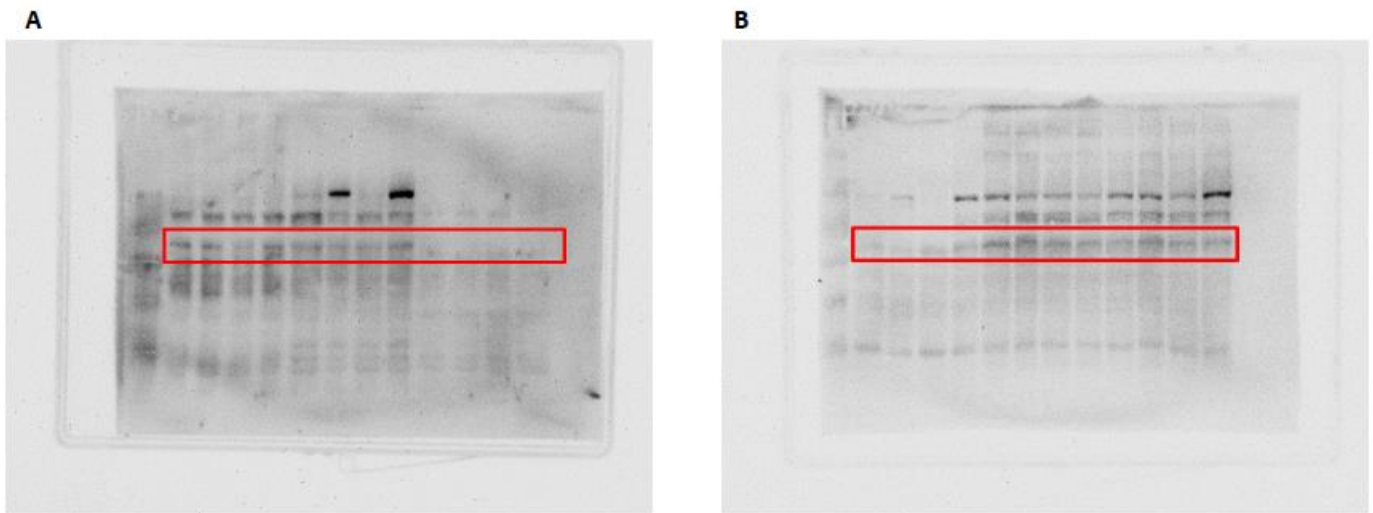


Figure S6. The ECL showing total protein levels of pYAP for (A) liver and (B) heart whole-tissue extracts of *R. sylvatica*. Other information similar to Figure S1.

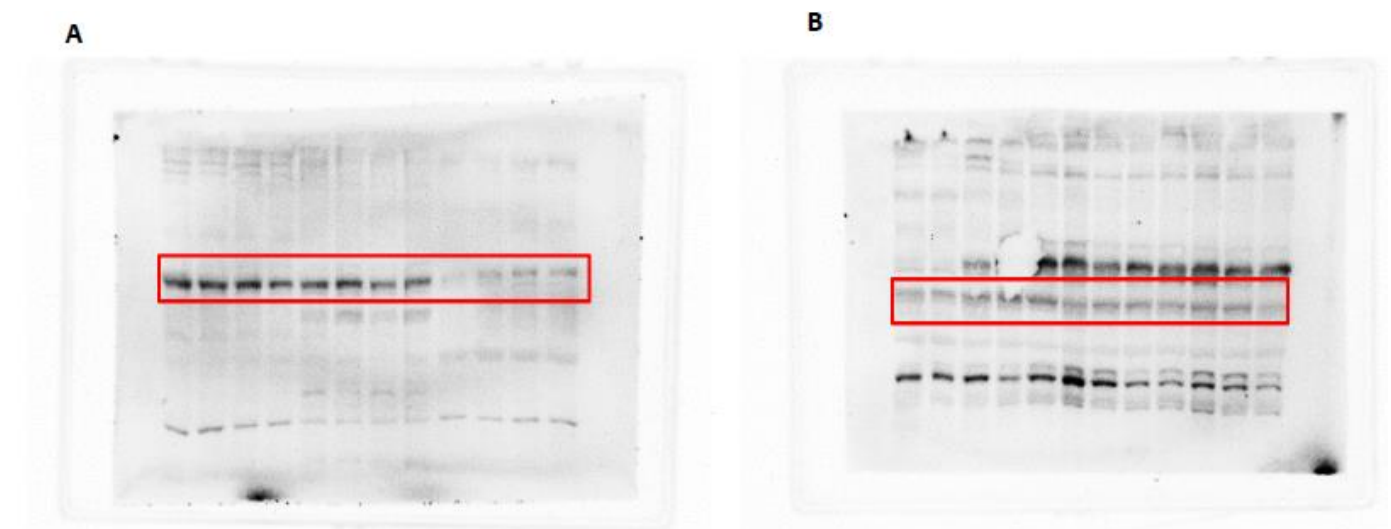


Figure S7. The ECL showing total protein levels of YAP for (A) liver and (B) heart whole-tissue extracts of *R. sylvatica*. Other information similar to Figure S1.

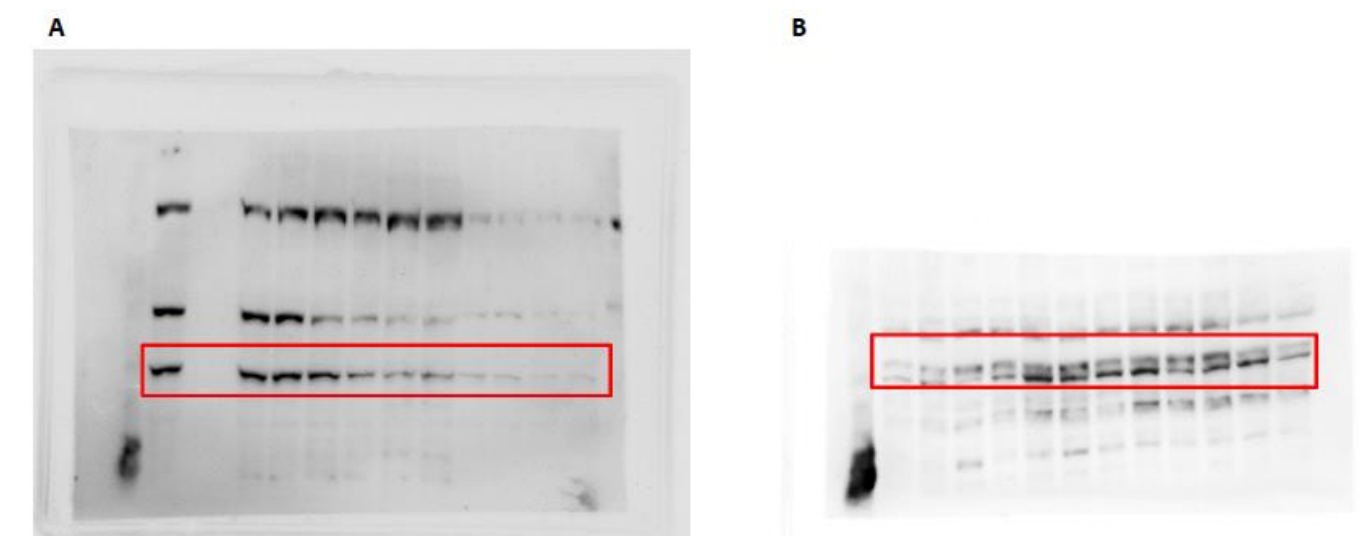


Figure S8. The ECL showing total protein levels of TAZ for (A) liver and (B) heart whole-tissue extracts of *R. sylvatica*. Other information similar to Figure S1.

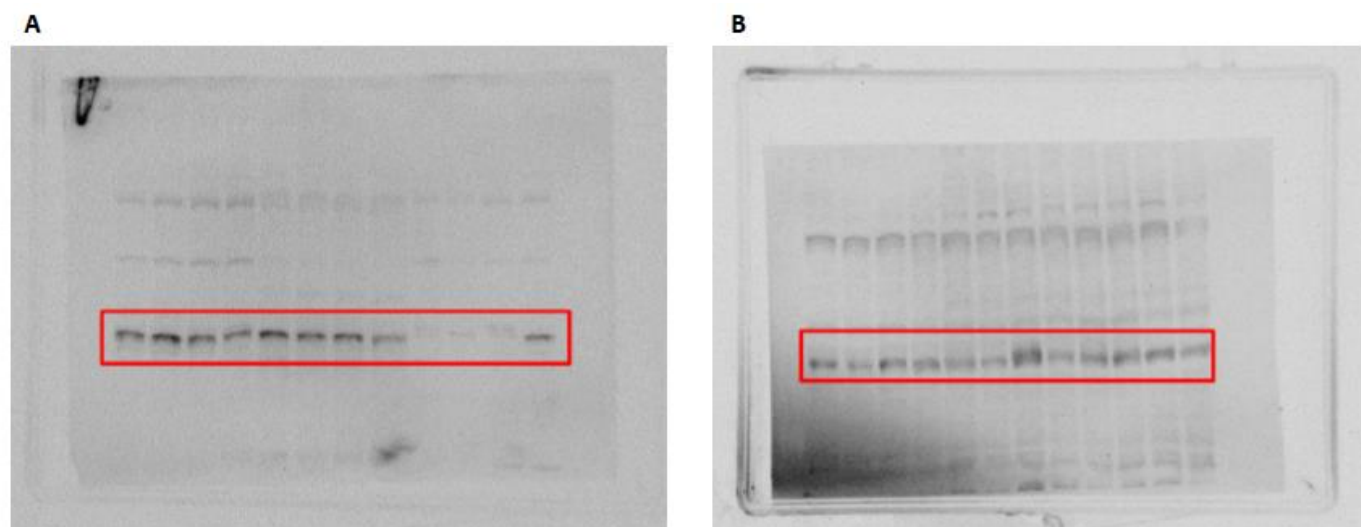


Figure S9. The ECL showing total protein levels of TEAD for (A) liver and (B) heart whole-tissue extracts of *R. sylvatica*. Other information similar to Figure S1.